

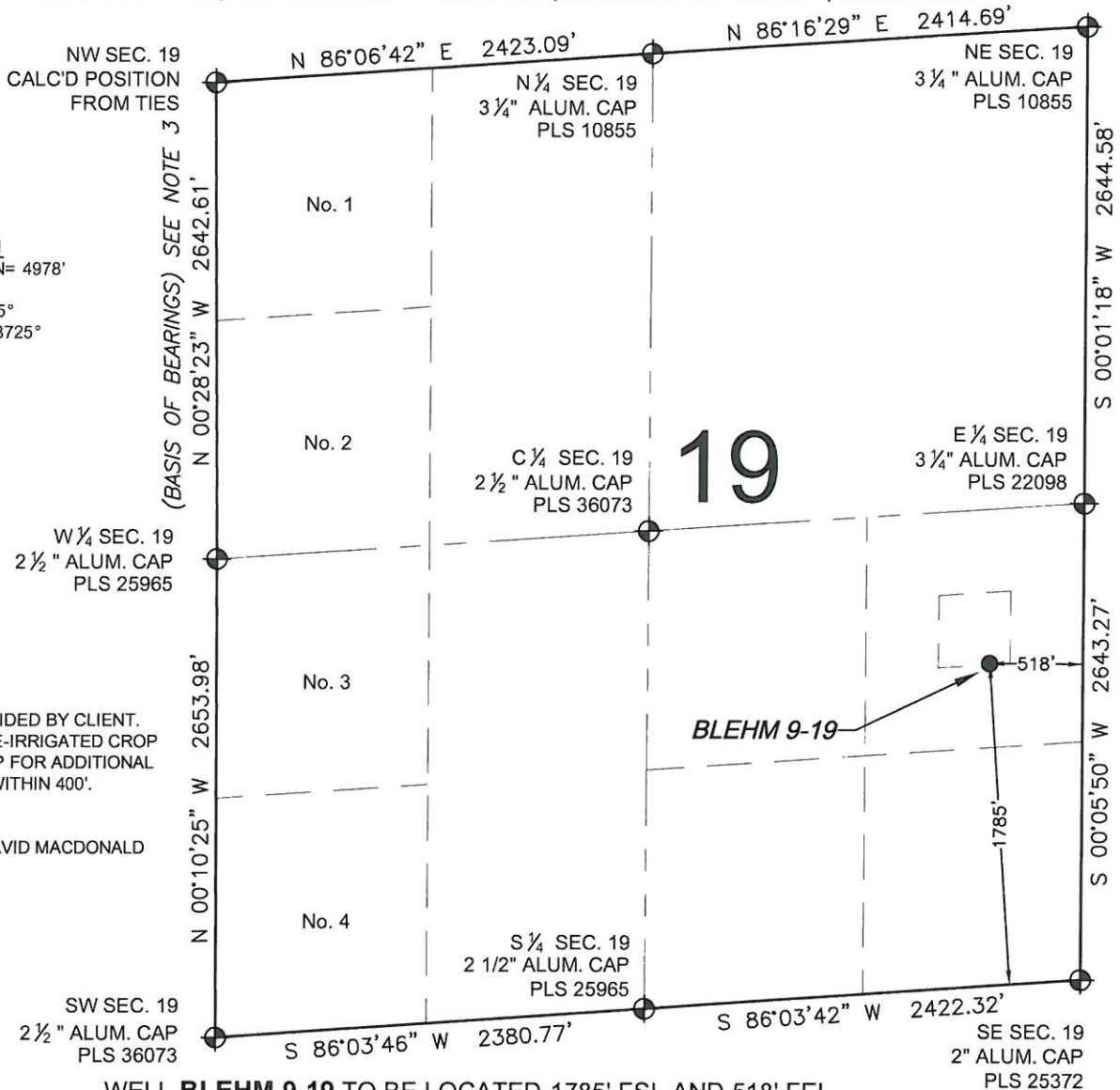
# WELL LOCATION CERTIFICATE: BLEHM 9-19

SECTION 19, TOWNSHIP 7 NORTH, RANGE 67 WEST, 6TH P.M.

SURFACE LOCATION  
GROUND ELEVATION= 4978'  
NAD83  
LATITUDE= 40.557415°  
LONGITUDE= 104.928725°

NOTES:  
BH LOCATION PROVIDED BY CLIENT.  
LAND SURFACE USE-IRRIGATED CROP  
SEE ATTACHED MAP FOR ADDITIONAL  
IMPROVEMENTS WITHIN 400'.

PDOP= 1.96  
GPS OPERATOR: DAVID MACDONALD



WELL BLEHM 9-19 TO BE LOCATED 1785' FSL AND 518' FEL

## LEGEND

⊕ = EXISTING MONUMENT    ⊕ = BOTTOM HOLE    BH = BOTTOM HOLE  
● = PROPOSED WELL    ◆ = EXISTING WELL

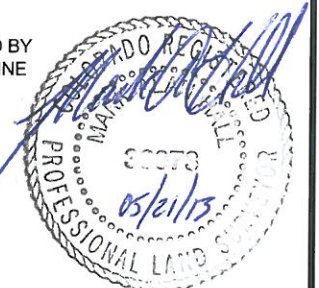
## NOTES:

1. THIS FIELD SURVEY CONFORMS TO THE MINIMUM STANDARDS SET BY THE C.O.G.C.C., RULE NO. 215
2. HORIZONTAL POSITIONS AND ORTHOMETRIC ELEVATIONS SHOWN AT THE WELL HEAD, ARE BASED ON GPS-RTK POSITIONS DERIVED FROM MINIMUM 2-HOUR STATIC OBSERVATIONS CORRECTED BY THE NATIONAL GEODETIC SURVEY ONLINE POSITIONING USER SERVICE, O.P.U.S. DATUM: HORIZONTAL = NAD83/2007, VERTICAL = NAVD88
3. THE BASIS OF BEARINGS ARE STATE PLANE COORDINATE SYSTEM GRID BEARINGS SHOWN HEREON BETWEEN THE DESCRIBED THE MONUMENTS SHOWN HEREON.
4. GRID DISTANCES ARE SHOWN, AS MEASURED IN THE FIELD, WITH TIES TO WELLS MEASURED PERPENDICULAR TO SECTION LINES.

I, MARK A. HALL, A LICENSED PROFESSIONAL LAND SURVEYOR IN THE STATE OF COLORADO DO HEREBY CERTIFY TO **BAYSWATER EXPLORATION & PRODUCTION, LLC**, THAT THE SURVEY AND WELL LOCATION CERTIFICATE SHOWN HEREON WERE DONE BY ME OR UNDER MY DIRECT SUPERVISION AND THAT THE DRAWING SHOWN HEREON ACCURATELY DEPICTS THE PROPOSED LOCATION OF THE WELL. THIS CERTIFICATE DOES NOT REPRESENT A LAND SURVEY PLAT OR IMPROVEMENT SURVEY PLAT AS DEFINED BY C.R.S. 38-51-102 AND CANNOT BE RELIED UPON TO DETERMINE OWNERSHIP.

MARK A. HALL, PLS 36073  
COLORADO LICENSED PROFESSIONAL LAND SURVEYOR  
FOR AND ON BEHALF OF P.F.S., LLC

0 500 1000  
SCALE: 1"=1000'



PREPARED BY: FIELD DATE: 04-24-13 SURFACE LOCATION: NE 1/4 SE 1/4, SEC. 19, T7N, R67W, 6TH P.M. WELD COUNTY, COLORADO  
DRAWING DATE: 05-21-13  
BY: MLP CHECKED: TJN

NOTICE: ACCORDING TO COLORADO LAW YOU MUST COMMENCE ANY LEGAL ACTION BASED UPON ANY DEFECT IN THIS SURVEY WITHIN THREE YEARS AFTER YOU FIRST DISCOVER SUCH DEFECT. IN NO EVENT MAY ANY ACTION BASED UPON ANY DEFECT IN THIS SURVEY BE COMMENCED MORE THAN TEN YEARS FROM THIS SAID DATE OF THIS CERTIFICATION SHOWN HEREON.