



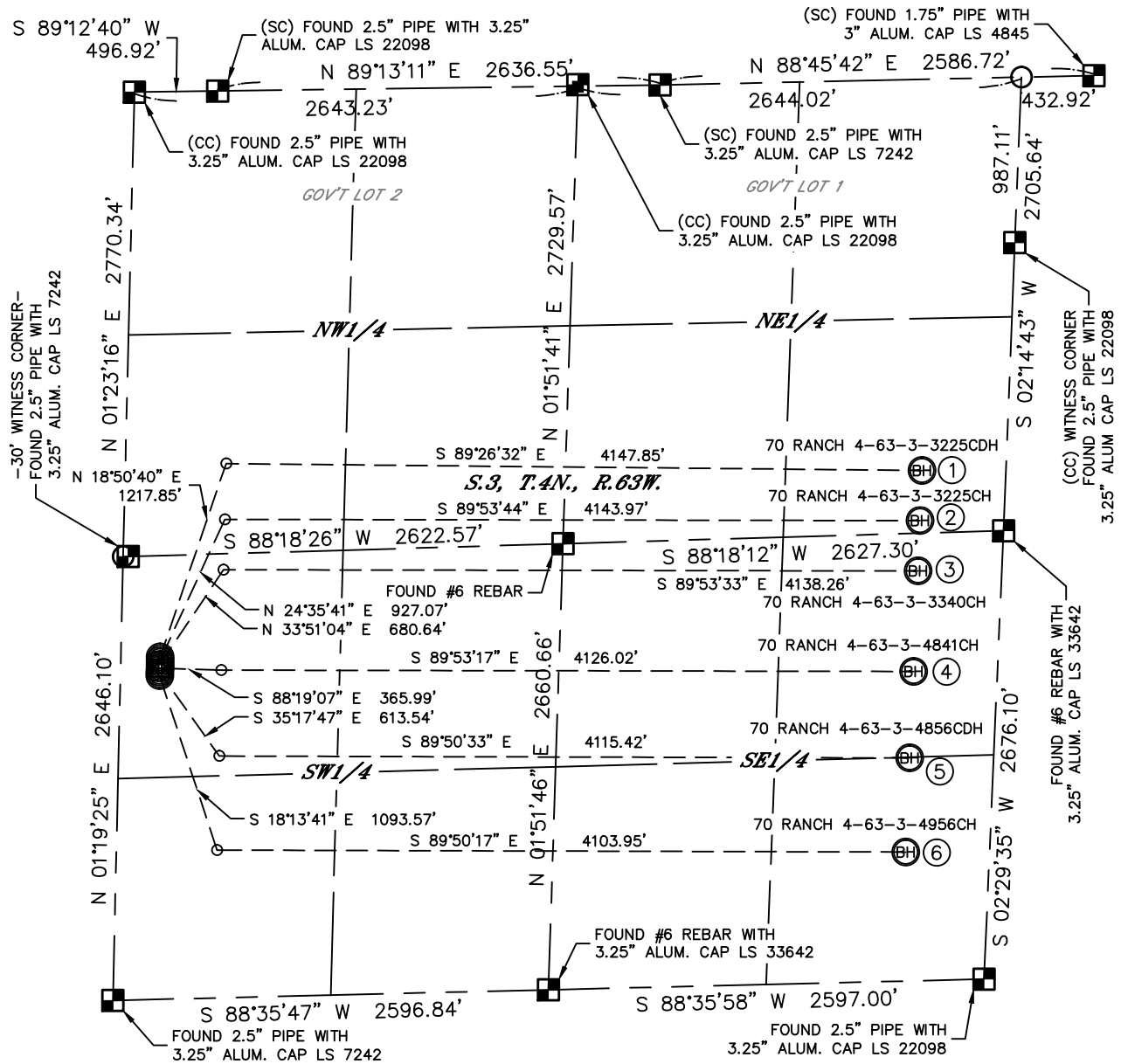
Lat40°, Inc. 1635 Foxtrail Drive, Suite 325 Loveland, CO 970-776-3321

MULTI-WELL PLAN

70 RANCH 4-63-3 PAD #2

THIS MAP DOES NOT REPRESENT A BOUNDARY SURVEY

SECTION: 3
TOWNSHIP: 4N
RANGE: 63W



①
-BOTTOM HOLE-
70 RANCH
4-63-3-3225CDH
2331' FNL
500' FEL
LAT: 40.34237°N
LONG: 104.41645°W

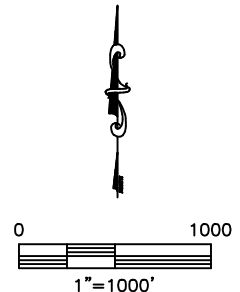
②
-BOTTOM HOLE-
70 RANCH
4-63-3-3225CH
2630' FNL
500' FEL
LAT: 40.34155°N
LONG: 104.41651°W

③
-BOTTOM HOLE-
70 RANCH
4-63-3-3340CH
2442' FSL
500' FEL
LAT: 40.34073°N
LONG: 104.41657°W

④
-BOTTOM HOLE-
70 RANCH
4-63-3-4841CH
1844' FSL
500' FEL
LAT: 40.33908°N
LONG: 104.41669°W

⑤
-BOTTOM HOLE-
70 RANCH
4-63-3-4856CDH
1329' FSL
500' FEL
LAT: 40.33767°N
LONG: 104.41679°W

⑥
-BOTTOM HOLE-
70 RANCH
4-63-3-4956CH
769' FSL
500' FEL
LAT: 40.33613°N
LONG: 104.41690°W



DATE: rev 5/3/2013
PROJECT#: 2013002

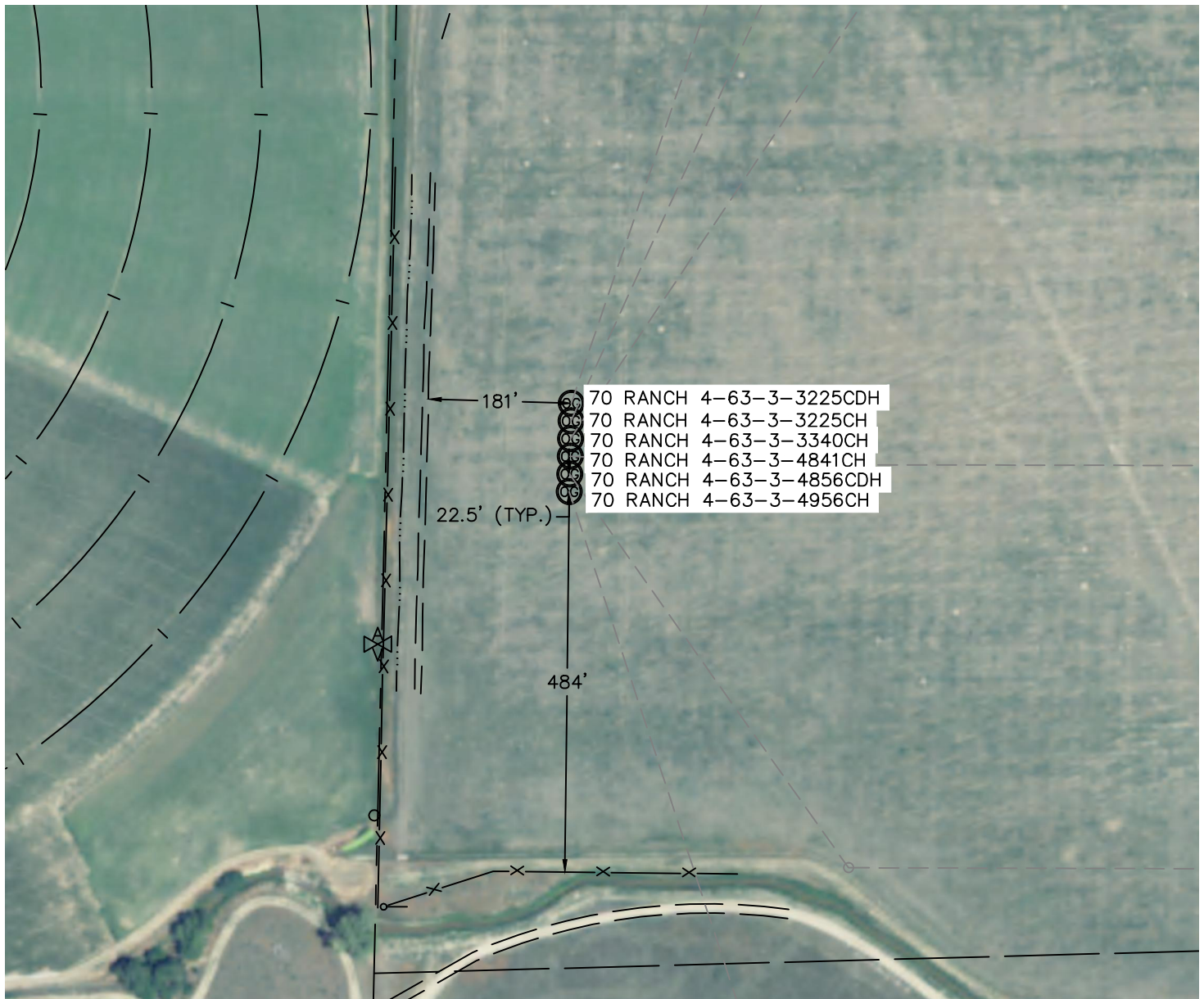


Lat40°, Inc. 1635 Foxtrail Drive, Suite 325 Loveland, CO 970-776-3321

MULTI-WELL PLAN

70 RANCH 4-63-3 PAD #2

SECTION: 3
TOWNSHIP: 4N
RANGE: 63W



0 200
1"=200'

DATE: rev 5/3/2013
PROJECT#: 2013002