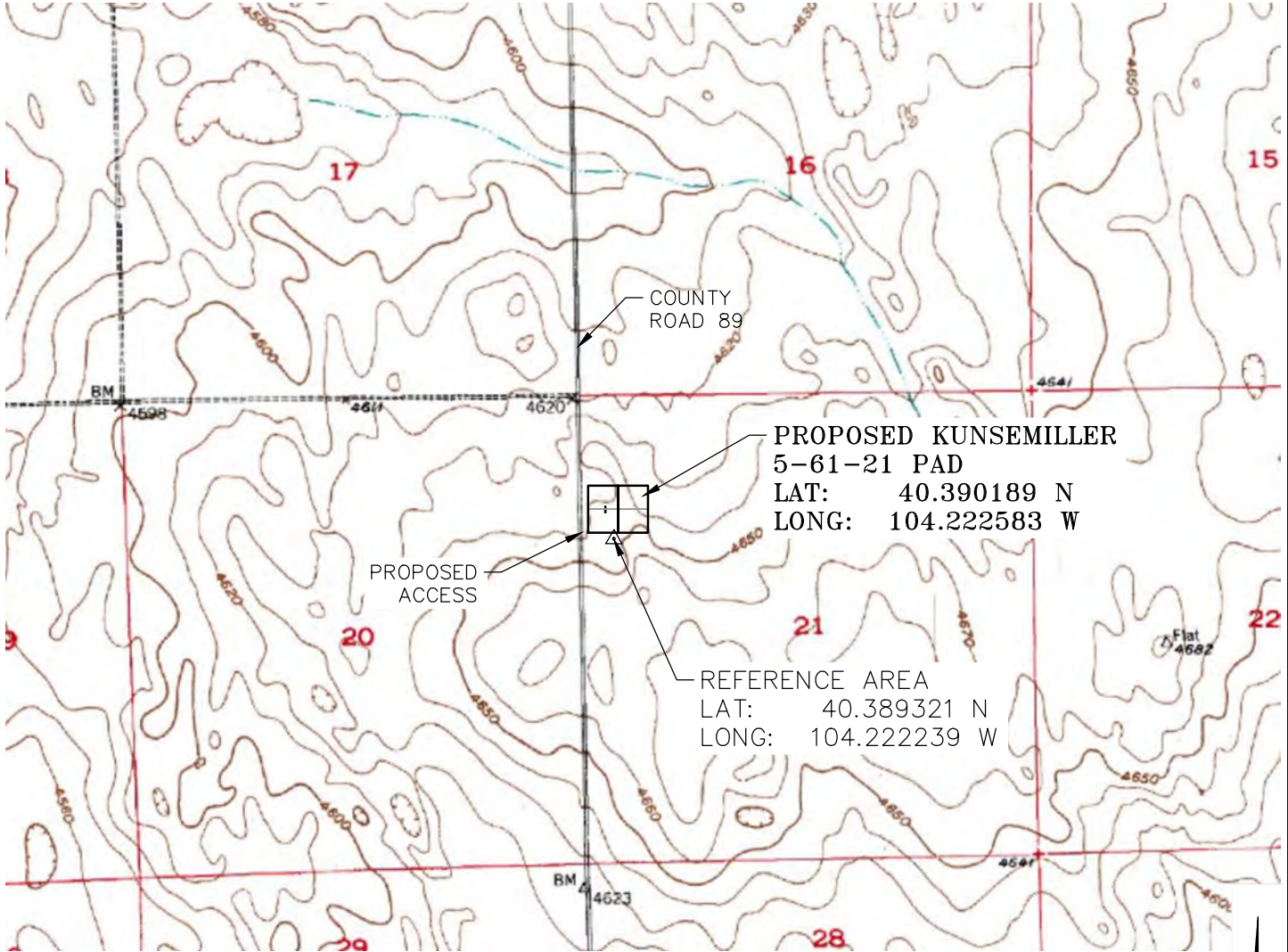




# KUNSEMILLER 5-61-21 PAD PLAT PACKAGE

W $\frac{1}{2}$ NW $\frac{1}{4}$ , SECTION 21, T. 5 N., R. 61 W. OF THE 6TH. P.M.  
WELD COUNTY, COLORADO



## PLAT PACKAGE TABLE OF CONTENTS

- PAGE 1: COVER SHEET AND REFERENCE AREA
- PAGE 2: GRADING PLAN AND PAD LAYOUT
- PAGE 3: DRILL PAD CROSS SECTIONS
- PAGE 4: DRILL RIG LAYOUT
- PAGE 5: ACCESS AND VICINITY MAP
- PAGE 6: RECLAIMED PAD AND PRODUCTION EQUIPMENT
- PAGE 7: PAD OFFSET FOOTAGES
- PAGE 8: ROAD AND PIPE FOOTAGES



**ECLIPSE**  
Surveying, Inc.

230 MAIN STREET, FORT MORGAN, CO 80701  
(970) 370-2263

REV. DATE:	
SCALE:	1" = 2000'
DATE:	5/20/13
SHEET:	1 OF 8
PROJECT:	KUNSE
DFT:	TAB



**Bill Barrett Corporation**

KUNSEMILLER 5-61-21 PAD  
COVER SHEET AND REFERENCE AREA