

T10N, R58W, 6th P.M.

WHITING OIL & GAS CORP.

2010 Alum. Cap,
0.5' Below Ground
Lat: 40.816692°
Long: 103.860906°

2012 Alum. Cap,
0.2' High
Lat: 40.816800°
Long: 103.851339°

2010 Alum. Cap,
#17492, Flush
W/Ground
Lat: 40.816906°
Long: 103.841850°

N89°09'05"E - 2649.22' (Meas.)

N89°10'14"E - 2627.30' (Meas.)

N00°50'23"W - 2652.80' (Meas.)

N00°55'36"W - 2648.12' (Meas.)

2012, 2.5" Alum. Cap,
0.6" Below Ground
Lat: 40.809414°
Long: 103.860764°

2010 Alum. Cap,
Flush W/Ground,
#17492, E-W Fence
Lat: 40.809642°
Long: 103.841694°

27

RAZOR #27K-3406B
Elev. Ungraded Ground = 4750'

1947'

N00°50'23"W - 2652.80' (Meas.)

N00°55'36"W - 2648.12' (Meas.)

S89°03'33"W - 2642.28' (Meas.)

S89°03'33"W - 2642.28' (Meas.)

2010 Alum. Cap,
0.5' Below Ground
Lat: 40.802136°
Long: 103.860622°

2010, 2.5" Alum. Cap,
0.1' Below Ground
Lat: 40.802256°
Long: 103.851081°

2010 Alum. Cap,
Flush W/Ground,
#17492, E-W Fence
Lat: 40.802375°
Long: 103.841542°

LEGEND:

— = 90° SYMBOL

● = PROPOSED WELL HEAD.

▲ = SECTION CORNERS LOCATED.

NAD 83 (SURFACE LOCATION)	
LATITUDE = 40°48'30.94"	(40.808594)
LONGITUDE = 103°51'13.37"	(103.853714)
NAD 27 (SURFACE LOCATION)	
LATITUDE = 40°48'30.99"	(40.808608)
LONGITUDE = 103°51'11.57"	(103.853214)

PDOP = 1.5

BASIS OF ELEVATION

SPOT ELEVATION LOCATED AT THE NORTHEAST CORNER OF SECTION 15, T9N, R58W, 6th P.M. TAKEN FROM THE GATEHOOK SPRING, QUADRANGLE, COLORADO, WELD COUNTY, 7.5 MINUTE QUAD (TOPOGRAPHIC MAP) PUBLISHED BY THE UNITED STATES DEPARTMENT OF THE INTERIOR, GEOLOGICAL SURVEY. SAID ELEVATION IS MARKED AS BEING 4679 FEET.

BASIS OF BEARINGS

BASIS OF BEARINGS IS A G.P.S. OBSERVATION.



S C A L E

CERTIFICATE

THIS IS TO CERTIFY THAT THE ABOVE DATA WAS PREPARED FROM FIELD NOTES OF ACTUAL SURVEYS MADE BY ME OR UNDER MY SUPERVISION AND THAT THE SAME ARE TRUE AND CORRECT TO THE BEST OF MY KNOWLEDGE AND BELIEF.

[Signature]
REGISTERED LAND SURVEYOR
REGISTRATION #17492
STATE OF COLORADO
04-08-13

REV: 04-04-13 B.D.H.

UNTAH ENGINEERING & LAND SURVEYING
85 SOUTH 200 EAST - VERNAL, UTAH 84078
(435) 789-1017

SCALE 1" = 1000'	DATE SURVEYED: 03-20-13	DATE DRAWN: 03-26-13
PARTY T.B. C.B. A.D.	REFERENCES G.L.O. PLAT	
WEATHER COOL	FILE WHITING OIL & GAS CORP.	

T10N, R58W, 6th P.M.

WHITING OIL & GAS CORP.

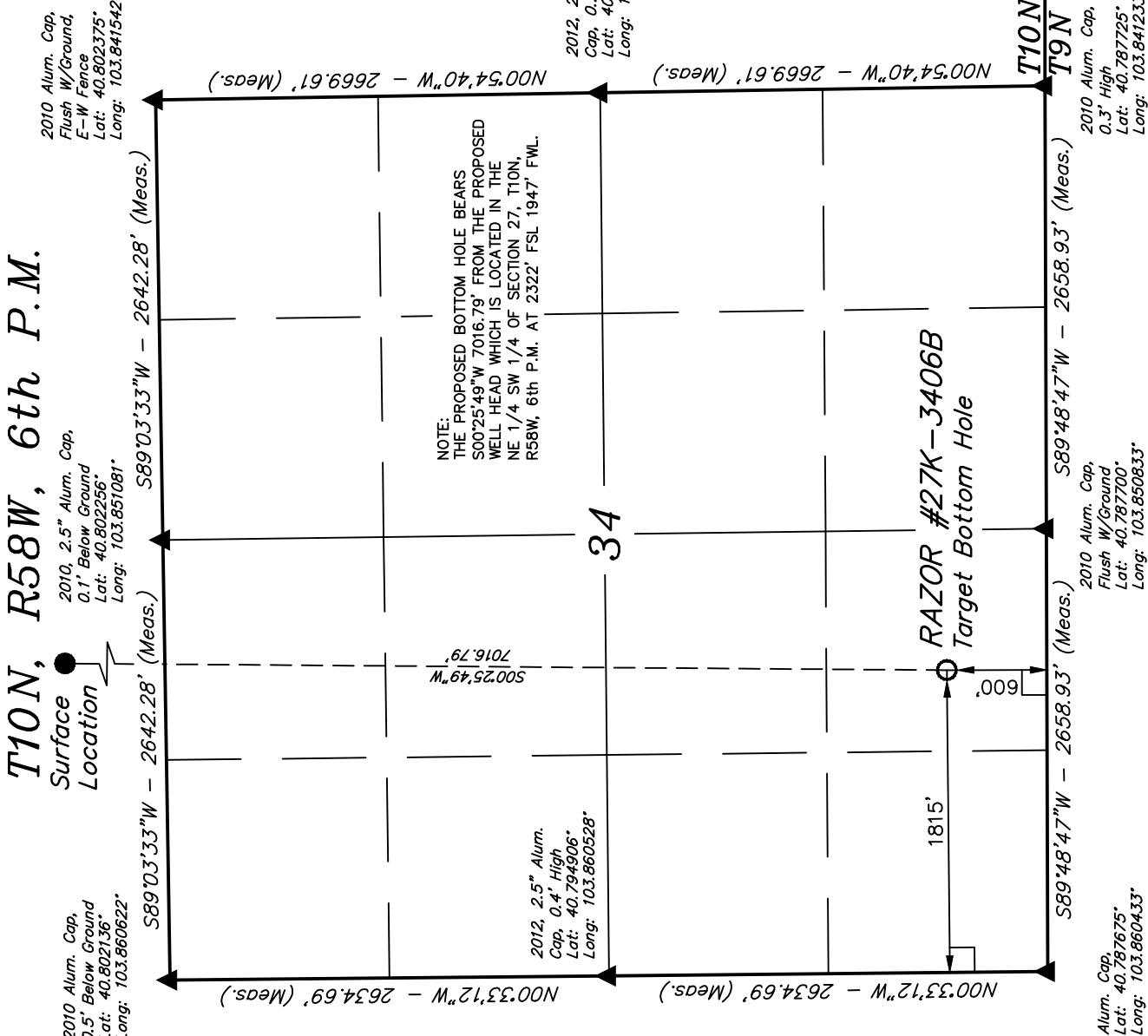
Well location, RAZOR #27K-3406B (TARGET BOTTOM HOLE), located as shown in the SE 1/4 SW 1/4 of Section 34, T10N, R58W, 6th P.M., Weld County, Colorado.

BASIS OF ELEVATION

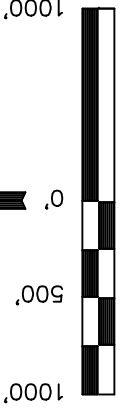
SPOT ELEVATION LOCATED AT THE NORTHEAST CORNER OF SECTION 15, T9N, R58W, 6th P.M. TAKEN FROM THE GATEHOOK SPRING, QUADRANGLE, COLORADO, WELD COUNTY, 7.5 MINUTE QUAD (TOPOGRAPHIC MAP) PUBLISHED BY THE UNITED STATES DEPARTMENT OF THE INTERIOR, GEOLOGICAL SURVEY. SAID ELEVATION IS MARKED AS BEING 4679 FEET.

BASIS OF BEARINGS

BASIS OF BEARINGS IS A G.P.S. OBSERVATION.



2012, 2.5" Alum.
Cap, 0.2' High
Lat: 40.795050
Long: 103.841386



SCALE

CERTIFICATE

THIS IS TO CERTIFY THAT THE ABOVE PLAT WAS PREPARED FROM FIELD NOTES OF ACTUAL SURVEYS MADE BY ME OR UNDER MY SUPERVISION AND THAT THE SAME ARE TRUE AND CORRECT TO THE BEST OF MY KNOWLEDGE AND BELIEF.

REGISTERED LAND SURVEYOR
STATE OF COLORADO
REGISTRATION NO. 17492
EXPIRATION DATE 04-08-13

REV: 04-04-13 B.D.H.
REVISED: 03-29-13

UNTAH ENGINEERING & LAND SURVEYING		
85 SOUTH 200 EAST - VERNAL, UTAH 84078		
(435) 789-1017		
SCALE 1" = 1000'	DATE SURVEYED: 03-20-13	DATE DRAWN: 03-26-13
PARTY T.B. C.B. A.D.	REFERENCES G.L.O. PLAT	
WEATHER COOL	FILE	WHITING OIL & GAS CORP.

LEGEND:

- = 90° SYMBOL
- = PROPOSED WELL HEAD.
- ▲ = SECTION CORNERS LOCATED.

NAD 83 (TARGET BOTTOM HOLE)
LATITUDE = 40°47'21.62" (40.789339)
LONGITUDE = 103°51'14.05" (103.853903)
NAD 27 (TARGET BOTTOM HOLE)
LATITUDE = 40°47'21.67" (40.789353)
LONGITUDE = 103°51'12.24" (103.853400)