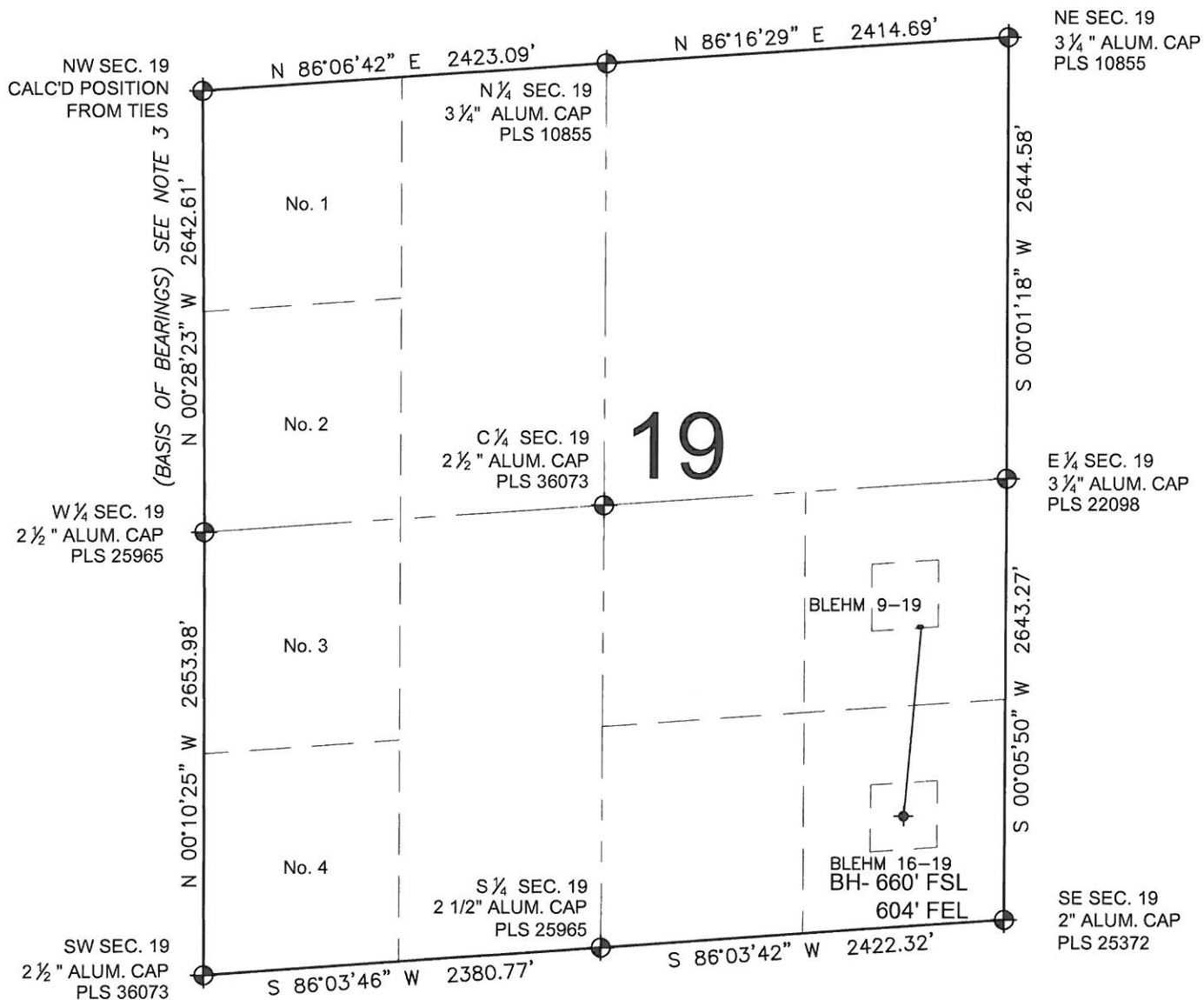


# PAD DRAWING: BLEHM 19-L PAD

## SECTION 19, TOWNSHIP 7 NORTH, RANGE 67 WEST, 6TH P.M.



### NOTES:

1. THIS FIELD SURVEY CONFORMS TO THE MINIMUM STANDARDS SET BY THE C.O.G.C.C., RULE NO. 215
2. HORIZONTAL POSITIONS AND ORTHOMETRIC ELEVATIONS SHOWN AT THE WELL HEAD, ARE BASED ON GPS-RTK POSITIONS DERIVED FROM MINIMUM 2-HOUR STATIC OBSERVATIONS CORRECTED BY THE NATIONAL GEODETIC SURVEY ONLINE POSITIONING USER SERVICE, O.P.U.S. DATUM: HORIZONTAL = NAD83/2007, VERTICAL = NAVD88
3. THE BASIS OF BEARINGS ARE STATE PLANE COORDINATE SYSTEM GRID BEARINGS SHOWN HEREON BETWEEN THE DESCRIBED MONUMENTS SHOWN HEREON.
4. GRID DISTANCES ARE SHOWN, AS MEASURED IN THE FIELD, WITH TIES TO WELLS MEASURED PERPENDICULAR TO SECTION LINES.

### LEGEND

- = EXISTING MONUMENT   
 = BOTTOM HOLE   
 BH= BOTTOM HOLE  
 = PROPOSED WELL   
 = EXISTING WELL

### NOTES:

- BLEHM 9-19 TO BE AT 1785' FSL, 518' FEL.  
 BLEHM 16-19 TO BE AT 1785' FSL, 503' FEL.  
 BOTTOM HOLE AT 660' FSL & 604' FEL.

PREPARED BY:

**PFS**



Petroleum Field Services, LLC.  
1801 W. 13th Ave.  
Denver, CO 80204

BAYSWATER EXPLORATION & PRODUCTION, LLC

FIELD DATE:  
04-24-13

PAD NAME:  
BLEHM 19-L PAD

DRAWING DATE:  
05-06-13

SURFACE LOCATION:  
NE 1/4 SE 1/4, SEC. 19, T7N, R67W, 6TH P.M.  
WELD COUNTY, COLORADO

BY:  
KAD

CHECKED:  
MLP



0 500 1000

SCALE: 1"=1000'