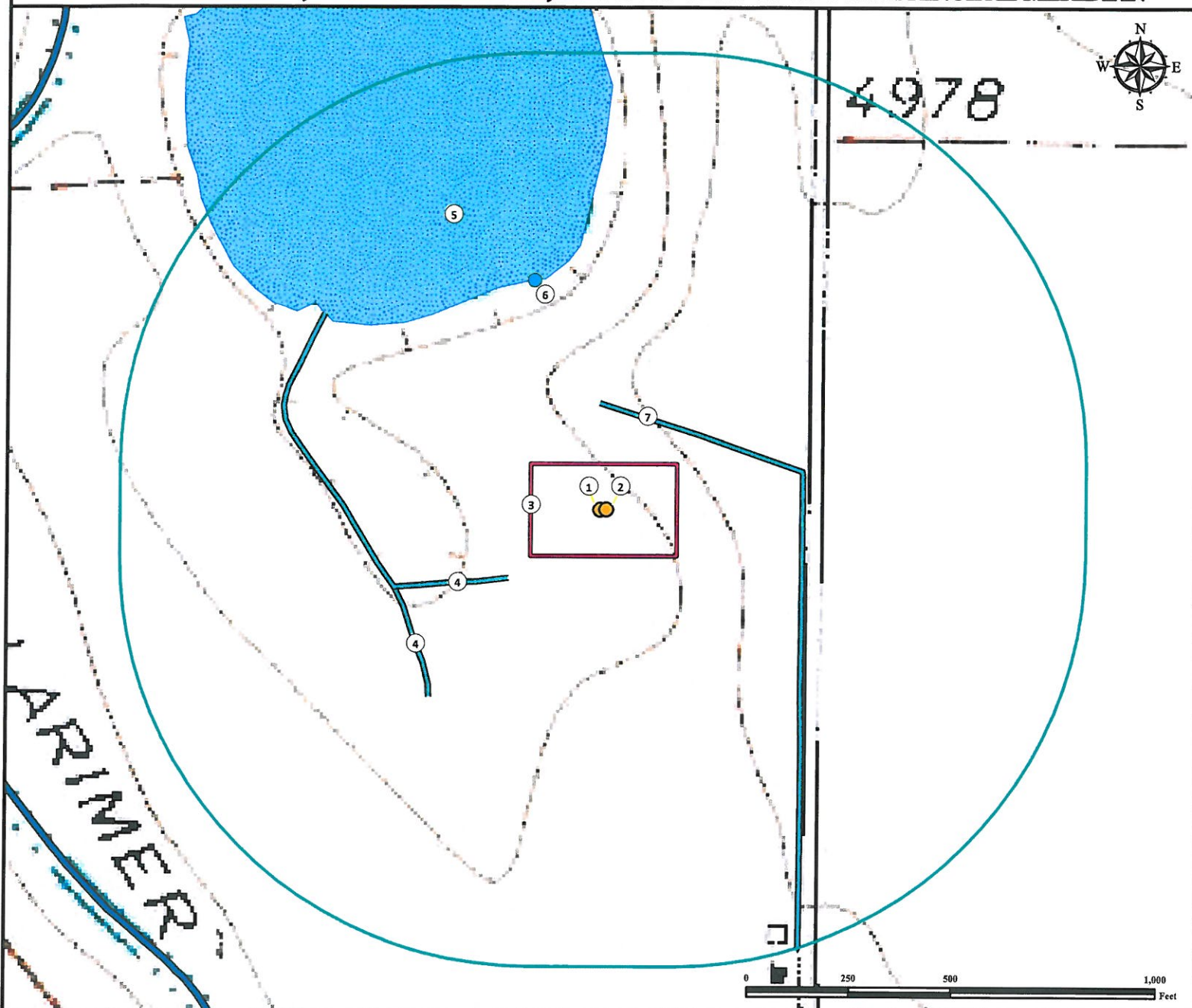


Hydrology Map

BLEHM 19-L Pad

Multi Well Pad

NE¼ SE¼ SECTION 19, TOWNSHIP 7 NORTH, RANGE 67 WEST OF THE 6TH PRINCIPAL MERIDIAN



1. Proposed Well BLEHM 9-19.
2. Proposed Well BLEHM 16-19.
3. Operational Disturbance Area.
4. Ditches are $\pm 277'$ SW and $\pm 533'$ SW.

5. Smith Reservoir is $\pm 579'$ NW.
6. Water Pump is $\pm 583'$ NW.
7. Concrete Ditch is $\pm 248'$ NE.

Legend

- | | | | |
|---------------|------------------|-----------|----------------|
| Proposed Well | Disturbance Area | Reservoir | Canal |
| Water Pump | 1000' Radius | Ditch | Concrete Ditch |

Reference Location

** All measurements are made from Reference Well BLEHM 9-19 **

Lat: 40.557415° Long: -104.928725° (NAD83)
Elevation: 4978 Feet



Use our resources to find yours!
www.petro-fs.com
(303) 928-7128

Field Date: 04/24/2013
Drafting Date: 05/23/2013
Drafter: CPO
Revision: 1

Data Sources:
- TOPO courtesy USGS

Prepared for:

