

T10N, R58W, 6th P.M.

WHITING OIL & GAS CORP.

Well location, RAZOR #26K-3507A (SURFACE LOCATION), located as shown in the NE 1/4 SW 1/4 of Section 26, T10N, R58W, 6th P.M., Weld County, Colorado.

BASIS OF ELEVATION

SPOT ELEVATION LOCATED AT THE NORTHEAST CORNER OF SECTION 15, T9N, R58W, 6th P.M. TAKEN FROM THE GATEHOOK SPRING, QUADRANGLE, COLORADO, WELD COUNTY, 7.5 MINUTE QUAD (TOPOGRAPHIC MAP) PUBLISHED BY THE UNITED STATES DEPARTMENT OF THE INTERIOR, GEOLOGICAL SURVEY. SAID ELEVATION IS MARKED AS BEING 4679 FEET.

BASIS OF BEARINGS

BASIS OF BEARINGS IS A G.P.S. OBSERVATION.

2010 UELS Alum. Cap, 0.3' High
Lat: 40.816975°
Long: 103.822819°

N89°43'12"E - 2634.39' (Meas.)

2012 UELS Alum. Cap, 0.1 High
Lat: 40.816942°
Long: 103.832336°

S01°13'45"E - 2661.92' (Meas.)

2012 UELS Alum. Cap, 0.1 High
Lat: 40.809672°
Long: 103.822617°

26
RAZOR #26K-3507A
Elev. Graded Ground = 4738'

N00°55'36"W - 2648.12' (Meas.)

2012 UELS Alum. Cap
Flush W/Ground
Lat: 40.809642°
Long: 103.841694°

2015'

2449'

2012 UELS Alum. Cap
Flush W/Ground
Lat: 40.802372°
Long: 103.831975°

N89°59'08"W - 2648.64' (Meas.)

N89°59'08"W - 2648.64' (Meas.)

2010 UELS Alum. Cap
Flush W/Ground
Fence Corner
Lat: 40.802369°
Long: 103.822411°

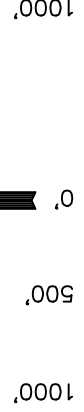
PDOP = 1.4

LEGEND:

— = 90° SYMBOL

● = PROPOSED WELL HEAD.

▲ = SECTION CORNERS LOCATED.



S C A L E

CERTIFICATE

THIS IS TO CERTIFY THAT THE ABOVE DATA WAS OBTAINED FROM FIELD NOTES OF ACTUAL SURVEYS MADE BY ME OR UNDER MY SUPERVISION AND THAT THE SAME ARE TRUE AND CORRECT TO THE BEST OF MY KNOWLEDGE AND BELIEF.

[Signature]
REGISTERED LAND SURVEYOR
REGISTRATION NO. 17492
STATE OF COLORADO 08-25-13

UINTAH ENGINEERING & LAND SURVEYING

85 SOUTH 200 EAST - VERNAL, UTAH 84078

(435) 789-1017

SCALE	DATE SURVEYED:	DATE DRAWN:
1" = 1000'	03-18-13	03-25-13
PARTY	REFERENCES	
J.H. T.B. Z.L.	G.L.O. PLAT	
WEATHER	FILE	
WARM	WHITING OIL & GAS CORP.	

NAD 83 (SURFACE LOCATION)

LATITUDE = 40°48'32.73" (40.809092)

LONGITUDE = 103°50'03.86" (103.834406)

NAD 27 (SURFACE LOCATION)

LATITUDE = 40°48'32.78" (40.809106)

LONGITUDE = 103°50'02.05" (103.833903)

T10N, R58W, 6th P.M.

WHITING OIL & GAS CORP.

Well location, RAZOR #26K-3507A (TARGET BOTTOM HOLE), located as shown in the SE 1/4 SW 1/4 of Section 35, T10N, R58W, 6th P.M., Weld County, Colorado.

BASIS OF ELEVATION

SPOT ELEVATION LOCATED AT THE NORTHEAST CORNER OF SECTION 15, T9N, R58W, 6th P.M. TAKEN FROM THE GATEHOOK SPRING, QUADRANGLE, COLORADO, WELD COUNTY, 7.5 MINUTE QUAD (TOPOGRAPHIC MAP) PUBLISHED BY THE UNITED STATES DEPARTMENT OF THE INTERIOR, GEOLOGICAL SURVEY. SAID ELEVATION IS MARKED AS BEING 4679 FEET.

BASIS OF BEARINGS

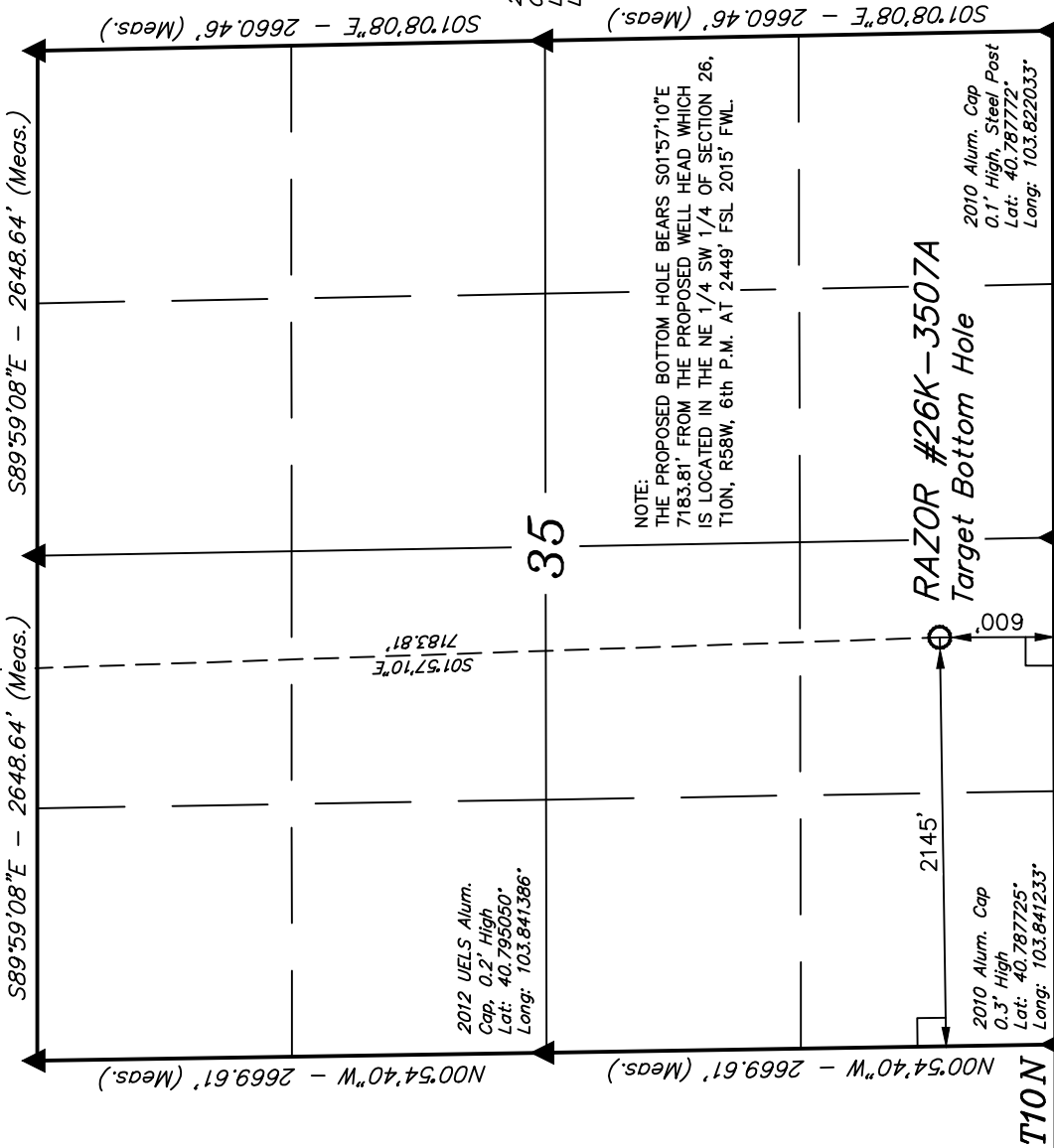
BASIS OF BEARINGS IS A G.P.S. OBSERVATION.

Surface Location

2010 UELS Alum. Cap
Flush W/Ground
E/W Fence
Lat: 40.802375°
Long: 103.841542°

2012 UELS Alum. Cap
Flush W/Ground
Lat: 40.802372°
Long: 103.831975°

2010 UELS Alum. Cap
Flush W/Ground
Fence Corner
Lat: 40.802369°
Long: 103.822411°



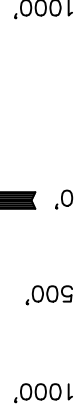
2012 UELS Alum. Cap, 0.2' High
Lat: 40.795050°
Long: 103.841386°

NOTE:
THE PROPOSED BOTTOM HOLE BEARS S01°57'10"E 7183.81' FROM THE PROPOSED WELL HEAD WHICH IS LOCATED IN THE NE 1/4 SW 1/4 OF SECTION 26, T10N, R58W, 6th P.M. AT 2449' FSL 2015' FWL.

2010 Alum. Cap, 0.3' High
Lat: 40.787725°
Long: 103.841233°

2010 Alum. Cap, 0.1' High, Steel Post
Lat: 40.787772°
Long: 103.822033°

2012 UELS Alum. Cap, 0.5' High
Lat: 40.795069°
Long: 103.822222°



S C A L E
CERTIFICATE

THIS IS TO CERTIFY THAT THE ABOVE DATA WAS PREPARED FROM FIELD NOTES OF ACTUAL SURVEYS MADE BY ME OR UNDER MY SUPERVISION AND THAT THE SAME ARE TRUE AND CORRECT TO THE BEST OF MY KNOWLEDGE AND BELIEF.

[Signature]
 REGISTERED LAND SURVEYOR
 REGISTRATION NO. 17492
 STATE OF COLORADO
 08-25-13

UINTAH ENGINEERING & LAND SURVEYING	
85 SOUTH 200 EAST - VERNAL, UTAH 84078 (435) 789-1017	
SCALE 1" = 1000'	DATE SURVEYED: 03-18-13
PARTY J.H. T.B. Z.L.	DATE DRAWN: 03-25-13
WEATHER WARM	REFERENCES G.L.O. PLAT
	FILE WHITING OIL & GAS CORP.

- LEGEND:**
- = 90° SYMBOL
 - = PROPOSED WELL HEAD.
 - ▲ = SECTION CORNERS LOCATED.