

# T10N, R58W, 6th P.M.

# WHITING OIL & GAS CORP.

2010 UELS Alum. Cap  
Flush W/Ground  
Lat: 40.816906°  
Long: 103.841850°

N89°43'12"E - 2634.39' (Meas.)

2012 UELS Alum. Cap, 0.1 High  
Lat: 40.816942°  
Long: 103.832336°

N89°43'12"E - 2634.39' (Meas.)

S01°13'45"E - 2661.92' (Meas.)

2012 UELS Alum. Cap  
Flush W/Ground  
Lat: 40.809642°  
Long: 103.841694°

1982'

26

**RAZOR #26K-2305A**  
Elev. Graded Ground = 4737'

2448'

S01°13'45"E - 2661.92' (Meas.)

2012 UELS Alum. Cap  
Flush W/Ground  
Lat: 40.802372°  
Long: 103.831975°

N89°59'08"W - 2648.64' (Meas.)

N89°59'08"W - 2648.64' (Meas.)

2010 UELS Alum. Cap  
Flush W/Ground  
E/W Fence  
Lat: 40.802375°  
Long: 103.841542°

2010 UELS Alum. Cap  
Flush W/Ground  
Fence Corner  
Lat: 40.802369°  
Long: 103.822411°

### LEGEND:

- = 90° SYMBOL
- = PROPOSED WELL HEAD.
- ▲ = SECTION CORNERS LOCATED.

PDOP = 1.4

NAD 83 (SURFACE LOCATION)	
LATITUDE = 40°48'32.73"	(40.809092)
LONGITUDE = 103°50'04.29"	(103.834525)
NAD 27 (SURFACE LOCATION)	
LATITUDE = 40°48'32.78"	(40.809106)
LONGITUDE = 103°50'04.48"	(103.834578)

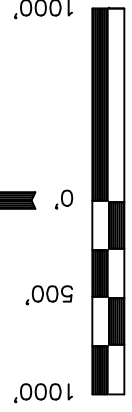
Well location, RAZOR #26K-2305A (SURFACE LOCATION), located as shown in the NE 1/4 SW 1/4 of Section 26, T10N, R58W, 6th P.M., Weld County, Colorado.

### BASIS OF ELEVATION

SPOT ELEVATION LOCATED AT THE NORTHEAST CORNER OF SECTION 15, T9N, R58W, 6th P.M. TAKEN FROM THE GATEHOOK SPRING, QUADRANGLE, COLORADO, WELD COUNTY, 7.5 MINUTE QUAD (TOPOGRAPHIC MAP) PUBLISHED BY THE UNITED STATES DEPARTMENT OF THE INTERIOR, GEOLOGICAL SURVEY. SAID ELEVATION IS MARKED AS BEING 4679 FEET.

### BASIS OF BEARINGS

BASIS OF BEARINGS IS A G.P.S. OBSERVATION.



S C A L E  
CERTIFICATE

THIS IS TO CERTIFY THAT THE ABOVE DATA WAS PREPARED FROM FIELD NOTES OF ACTUAL SURVEYS MADE BY ME OR UNDER MY SUPERVISION AND THAT THE SAME ARE TRUE AND CORRECT TO THE BEST OF MY KNOWLEDGE AND BELIEF.

*[Signature]*  
REGISTERED LAND SURVEYOR  
REGISTRATION NO. 17492  
STATE OF COLORADO 08-25-13

<b>UINTAH ENGINEERING &amp; LAND SURVEYING</b>	
85 SOUTH 200 EAST - VERNAL, UTAH 84078 (435) 789-1017	
SCALE 1" = 1000'	DATE SURVEYED: 03-18-13
PARTY J.H. T.B. Z.L.	DATE DRAWN: 03-25-13
WEATHER WARM	REFERENCES G.L.O. PLAT
FILE	WHITING OIL & GAS CORP.

# T10N, R58W, 6th P.M.

# WHITING OIL & GAS CORP.

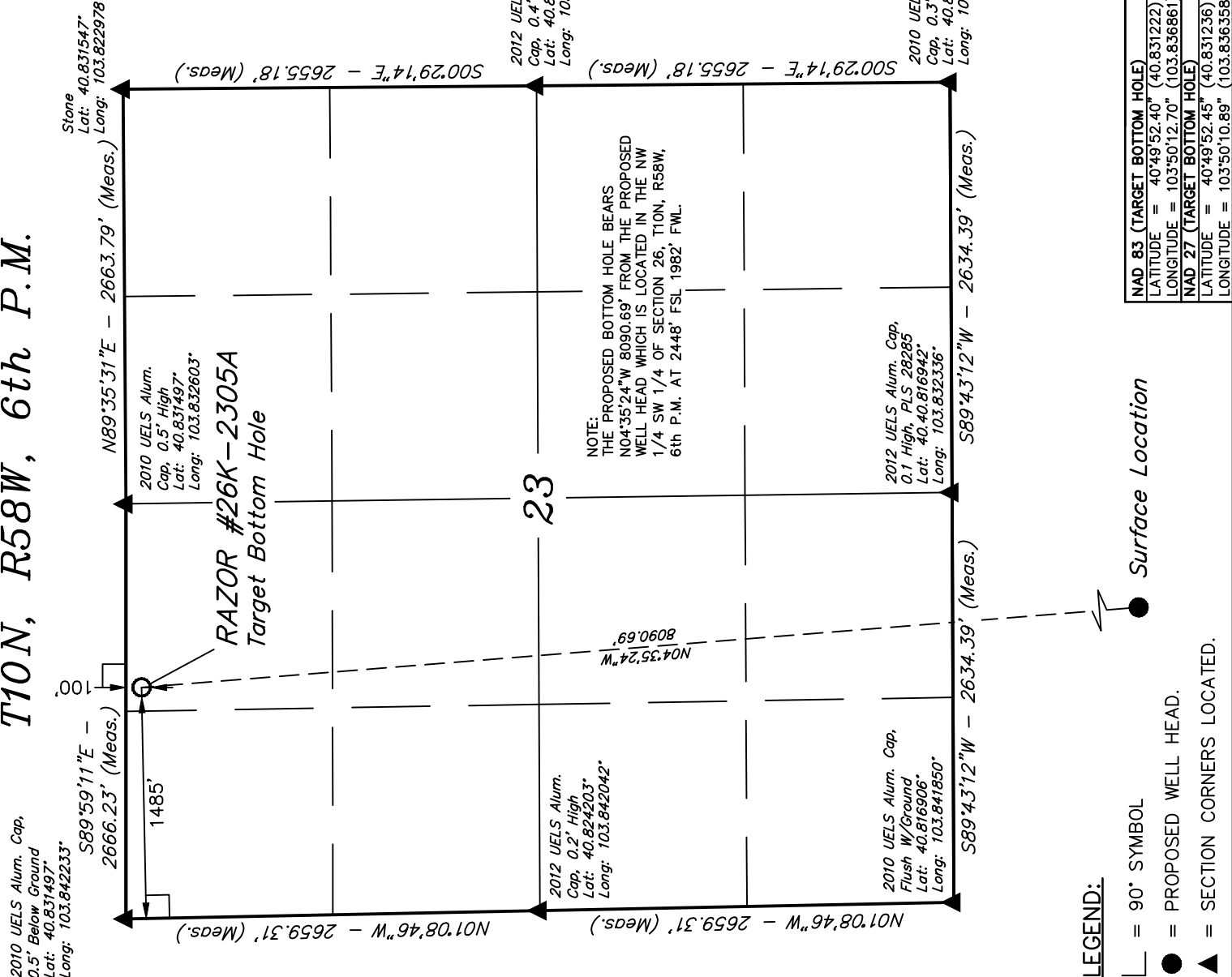
Well location, RAZOR #26K-2305A (TARGET BOTTOM HOLE), located as shown in the NE 1/4 NW 1/4 of Section 23, T10N, R58W, 6th P.M., Weld County, Colorado.

## BASIS OF ELEVATION

SPOT ELEVATION LOCATED AT THE NORTHEAST CORNER OF SECTION 15, T9N, R58W, 6th P.M. TAKEN FROM THE GATEHOOK SPRING, QUADRANGLE, COLORADO, WELD COUNTY, 7.5 MINUTE QUAD (TOPOGRAPHIC MAP) PUBLISHED BY THE UNITED STATES DEPARTMENT OF THE INTERIOR, GEOLOGICAL SURVEY. SAID ELEVATION IS MARKED AS BEING 4679 FEET.

## BASIS OF BEARINGS

BASIS OF BEARINGS IS A G.P.S. OBSERVATION.



NOTE:  
THE PROPOSED BOTTOM HOLE BEARS  
N04°35'24"W 8090.69' FROM THE PROPOSED  
WELL HEAD WHICH IS LOCATED IN THE NW  
1/4 SW 1/4 OF SECTION 26, T10N, R58W,  
6th P.M. AT 2448' FSL 1982' FWL.



S C A L E

CERTIFICATE  
THIS IS TO CERTIFY THAT THE ABOVE DATA WAS PREPARED FROM FIELD NOTES OF ACTUAL SURVEYS MADE BY ME OR UNDER MY SUPERVISION AND THAT THE SAME ARE TRUE AND CORRECT TO THE BEST OF MY KNOWLEDGE AND BELIEF.  
*[Signature]*  
REGISTERED LAND SURVEYOR  
REGISTRATION NO. 17492  
STATE OF COLORADO  
08-25-13

<b>UNTAH ENGINEERING &amp; LAND SURVEYING</b>	
85 SOUTH 200 EAST - VERNAL, UTAH 84078 (435) 789-1017	
SCALE 1" = 1000'	DATE SURVEYED: 03-18-13
PARTY J.H. T.B. Z.L.	DATE DRAWN: 03-25-13
WEATHER WARM	REFERENCES G.L.O. PLAT
	FILE WHITING OIL & GAS CORP.

- LEGEND:**
- = 90° SYMBOL
  - = PROPOSED WELL HEAD.
  - ▲ = SECTION CORNERS LOCATED.

Surface Location

<b>NAD 83 (TARGET BOTTOM HOLE)</b>
LATITUDE = 40°49'52.40" (40.831222)
LONGITUDE = 103°50'12.70" (103.836861)
<b>NAD 27 (TARGET BOTTOM HOLE)</b>
LATITUDE = 40°49'52.45" (40.831236)
LONGITUDE = 103°50'10.89" (103.836358)