

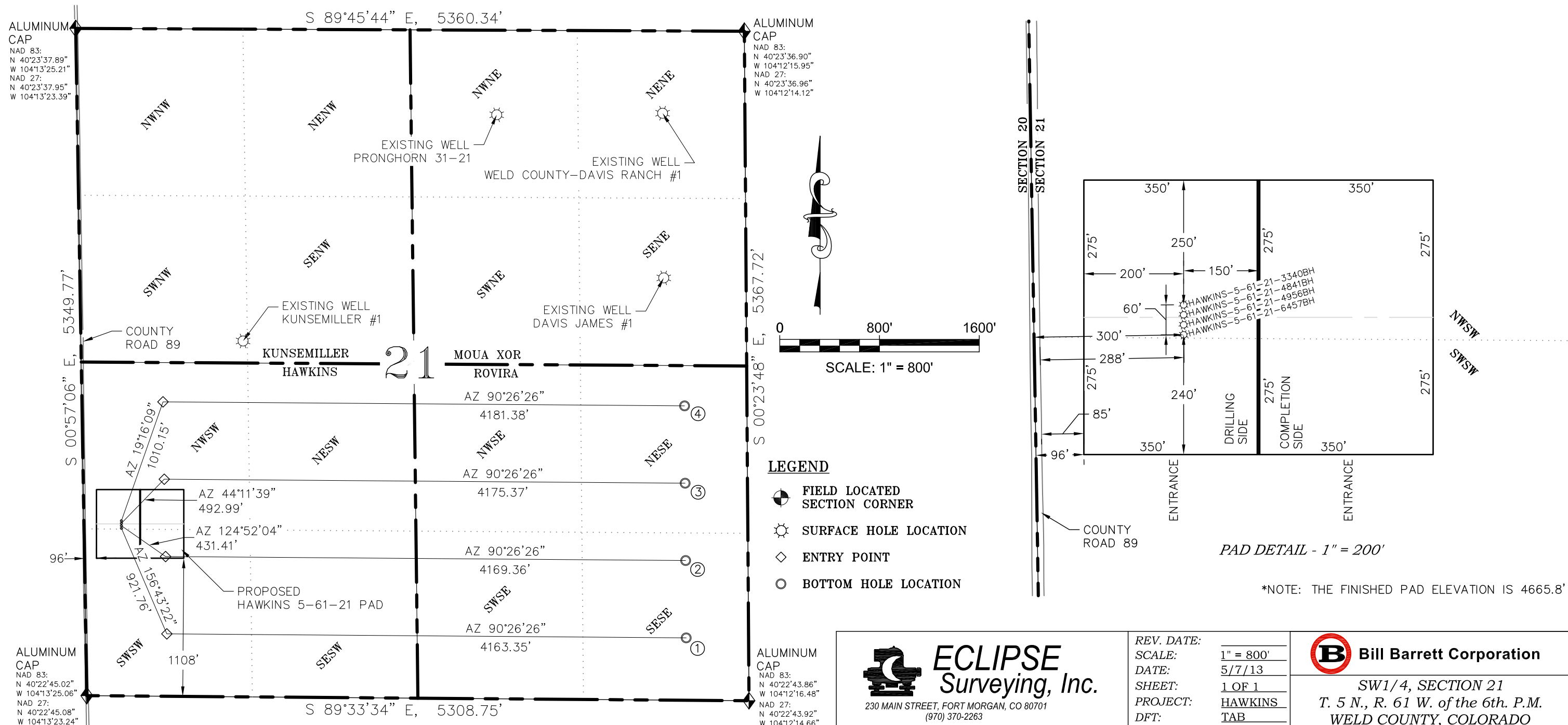
| SURFACE HOLE LOCATIONS | | | | | | | | | | ENTRY POINT LOCATIONS | | | | | | | | BOTTOM HOLE LOCATIONS | | | | | | | |
|------------------------|-----------------------------|----------|----------|-----------|-----------|----------------|-----------------|----------------|-----------------|-----------------------|-----|-----------|-----------|----------------|-----------------|----------------|-----------------|-----------------------|-----|-----------|-----------|----------------|-----------------|----------------|-----------------|
| | WELL NAME | FNL | FEL | NORTHING | EASTING | LAT NAD 83 | LONG NAD 83 | LAT NAD 27 | LONG NAD 27 | FSL | FWL | NORTHING | EASTING | LAT NAD 83 | LONG NAD 83 | LAT NAD 27 | LONG NAD 27 | FSL | FEL | NORTHING | EASTING | LAT NAD 83 | LONG NAD 83 | LAT NAD 27 | LONG NAD 27 |
| 1 | HAWKINS-5-61-21-6457BH | 1344 FSL | 300 FWL | 1384873.8 | 3355857.4 | N 40°22'58.24" | W 104°13'21.22" | N 40°22'58.30" | W 104°13'19.40" | 500 | 650 | 1384027.1 | 3356221.6 | N 40°22'49.82" | W 104°13'16.68" | N 40°22'49.88" | W 104°13'14.85" | 500 | 500 | 1383995.1 | 3360384.9 | N 40°22'48.91" | W 104°12'22.89" | N 40°22'48.97" | W 104°12'21.07" |
| 2 | HAWKINS-5-61-21-4956BH | 1364 FSL | 300 FWL | 1384893.8 | 3355857.4 | N 40°22'58.44" | W 104°13'21.22" | N 40°22'58.50" | W 104°13'19.40" | 1120 | 650 | 1384647.2 | 3356211.3 | N 40°22'55.95" | W 104°13'16.69" | N 40°22'56.01" | W 104°13'14.87" | 1120 | 500 | 1384615.1 | 3360380.6 | N 40°22'55.03" | W 104°12'22.83" | N 40°22'55.10" | W 104°12'21.01" |
| 3 | HAWKINS-5-61-21-4841BH | 1384 FSL | 301 FWL | 1384913.8 | 3355857.4 | N 40°22'58.63" | W 104°13'21.22" | N 40°22'58.70" | W 104°13'19.40" | 1740 | 650 | 1385267.3 | 3356201.0 | N 40°23'02.08" | W 104°13'16.71" | N 40°23'02.14" | W 104°13'14.89" | 1740 | 500 | 1385235.2 | 3360376.3 | N 40°23'01.16" | W 104°12'22.77" | N 40°23'01.23" | W 104°12'20.95" |
| 4 | HAWKINS-5-61-21-3340BH | 1404 FSL | 301 FWL | 1384933.8 | 3355857.4 | N 40°22'58.83" | W 104°13'21.21" | N 40°22'58.90" | W 104°13'19.39" | 2360 | 650 | 1385887.4 | 3356190.7 | N 40°23'08.21" | W 104°13'16.73" | N 40°23'08.27" | W 104°13'14.91" | 2360 | 500 | 1385855.2 | 3360372.0 | N 40°23'07.29" | W 104°12'22.70" | N 40°23'07.35" | W 104°12'20.88" |
| 5 | **PRONGHORN 31-21 | 678 | 1990 | 1388189.0 | 3358865.6 | N 40°23'30.57" | W 104°12'41.73" | N 40°23'30.63" | W 104°12'39.91" | | | | | | | | | | | | | | | | |
| 6 | **WELD COUNTY-DAVIS RANCH 1 | 660 | 660 | 1388201.5 | 3360195.7 | N 40°23'30.50" | W 104°12'24.54" | N 40°23'30.56" | W 104°12'22.72" | | | | | | | | | | | | | | | | |
| 7 | **DAVIS JAMES 1 | 1980 | 660 | 1386881.4 | 3360204.9 | N 40°23'17.45" | W 104°12'24.67" | N 40°23'17.52" | W 104°12'22.85" | | | | | | | | | | | | | | | | |
| 8 | **KUNSEMILLER 1 | 2500 | 1300 FWL | 1386375.4 | 3356832.7 | N 40°23'12.94" | W 104°13'08.34" | N 40°23'13.00" | W 104°13'06.52" | | | | | | | | | | | | | | | | |

** = EXISTING WELL

HORIZONTAL OFFSET EXHIBIT

HAWKINS 5-61-21 PAD

NAD 83/NAD 27 COLORADO NORTH ZONE



z:\land projects\2013\bill barrett corp east\section 21.5n 61w\hawkins plat\package\dwg\hawkins hor offset.dwg 5/7/2013 12:35 PM