

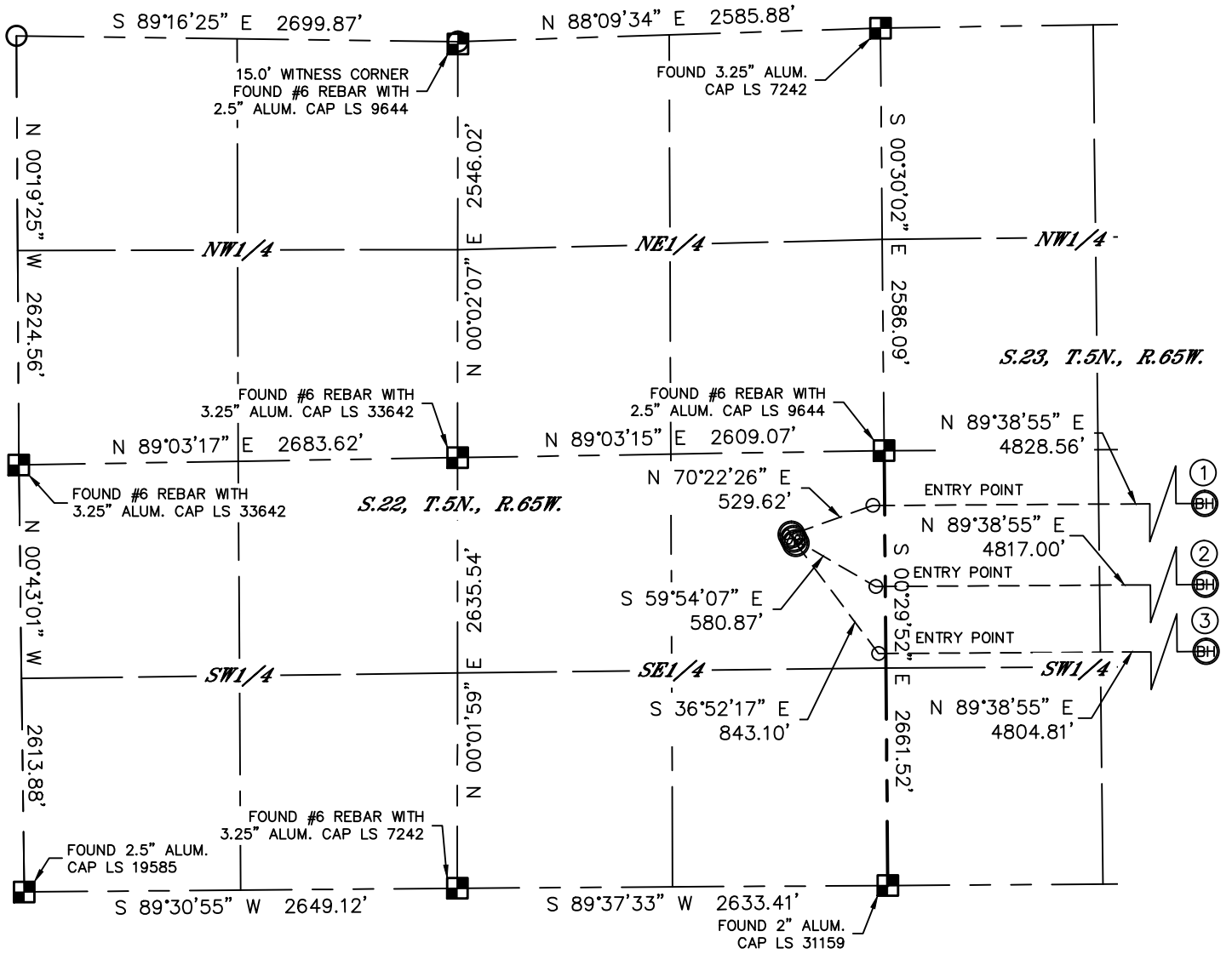


MULTI-WELL PLAN

ALLES 22S-HZ PAD

THIS MAP DOES NOT REPRESENT A BOUNDARY SURVEY

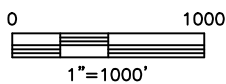
SECTION: 22
TOWNSHIP: 5N
RANGE: 65W



①
-BOTTOM HOLE-
ALLES 22S-432
2326' FSL
500' FEL
LAT: 40.38384°N
LONG: 104.62283°W

②
-BOTTOM HOLE-
ALLES 22D-212
1830' FSL
500' FEL
LAT: 40.38248°N
LONG: 104.62283°W

③
-BOTTOM HOLE-
ALLES 22D-402
1420' FSL
500' FEL
LAT: 40.38135°N
LONG: 104.62282°W



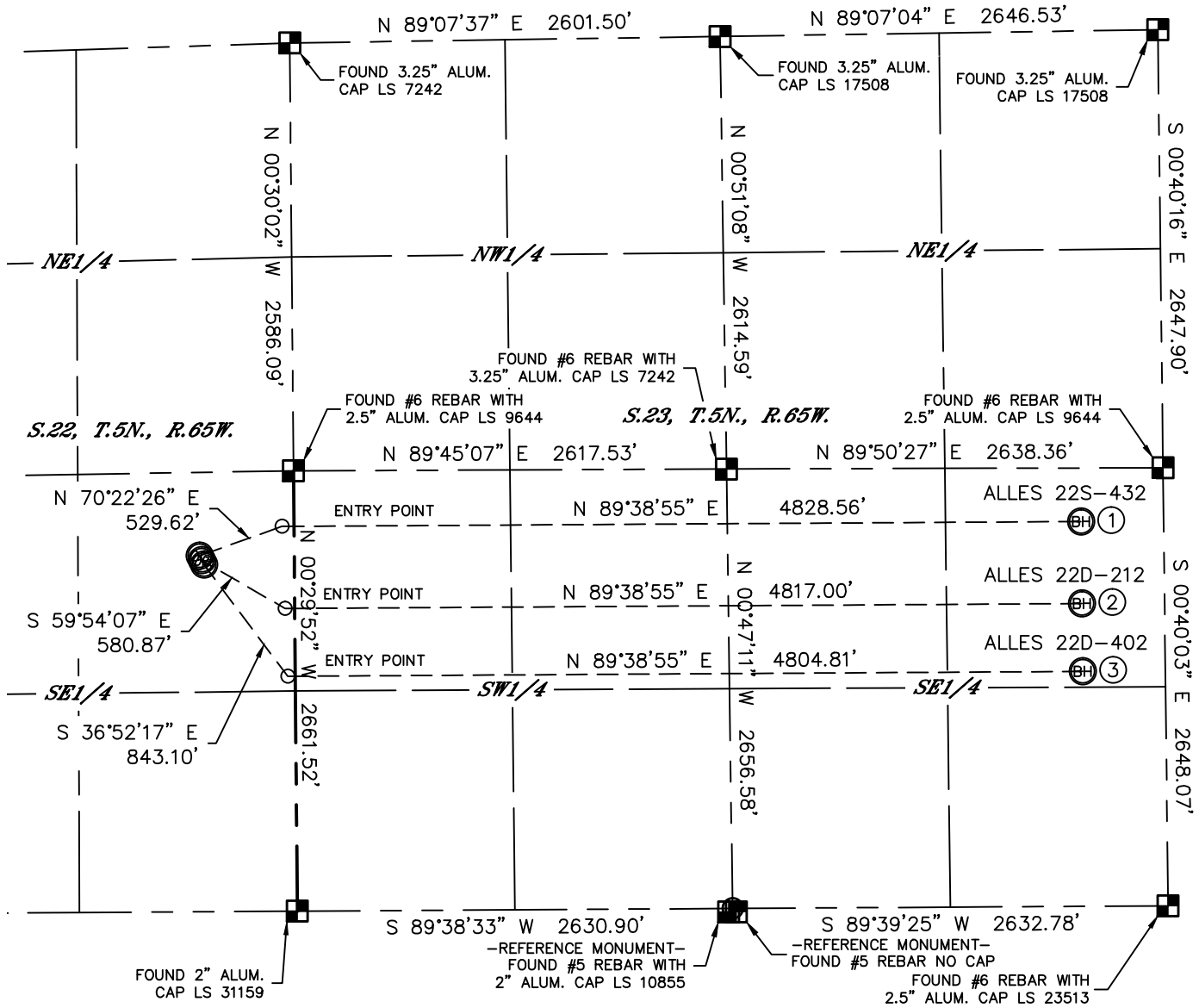


MULTI-WELL PLAN

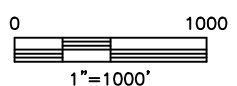
ALLES 22S-HZ PAD

THIS MAP DOES NOT REPRESENT A BOUNDARY SURVEY

SECTION: 22
TOWNSHIP: 5N
RANGE: 65W



- ① -BOTTOM HOLE-
ALLES 22S-432
2326' FSL
500' FEL
LAT: 40.38384°N
LONG: 104.62283°W
- ② -BOTTOM HOLE-
ALLES 22D-212
1830' FSL
500' FEL
LAT: 40.38248°N
LONG: 104.62283°W
- ③ -BOTTOM HOLE-
ALLES 22D-402
1420' FSL
500' FEL
LAT: 40.38135°N
LONG: 104.62282°W



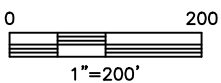


Lat40°, Inc. 1635 Foxtrail Drive, Suite 325 Loveland, CO 970-776-3321

MULTI-WELL PLAN

ALLES 22S-HZ PAD

SECTION: 22
TOWNSHIP: 5N
RANGE: 65W



DATE: rev 4/11/2013
PROJECT#: 2013036