

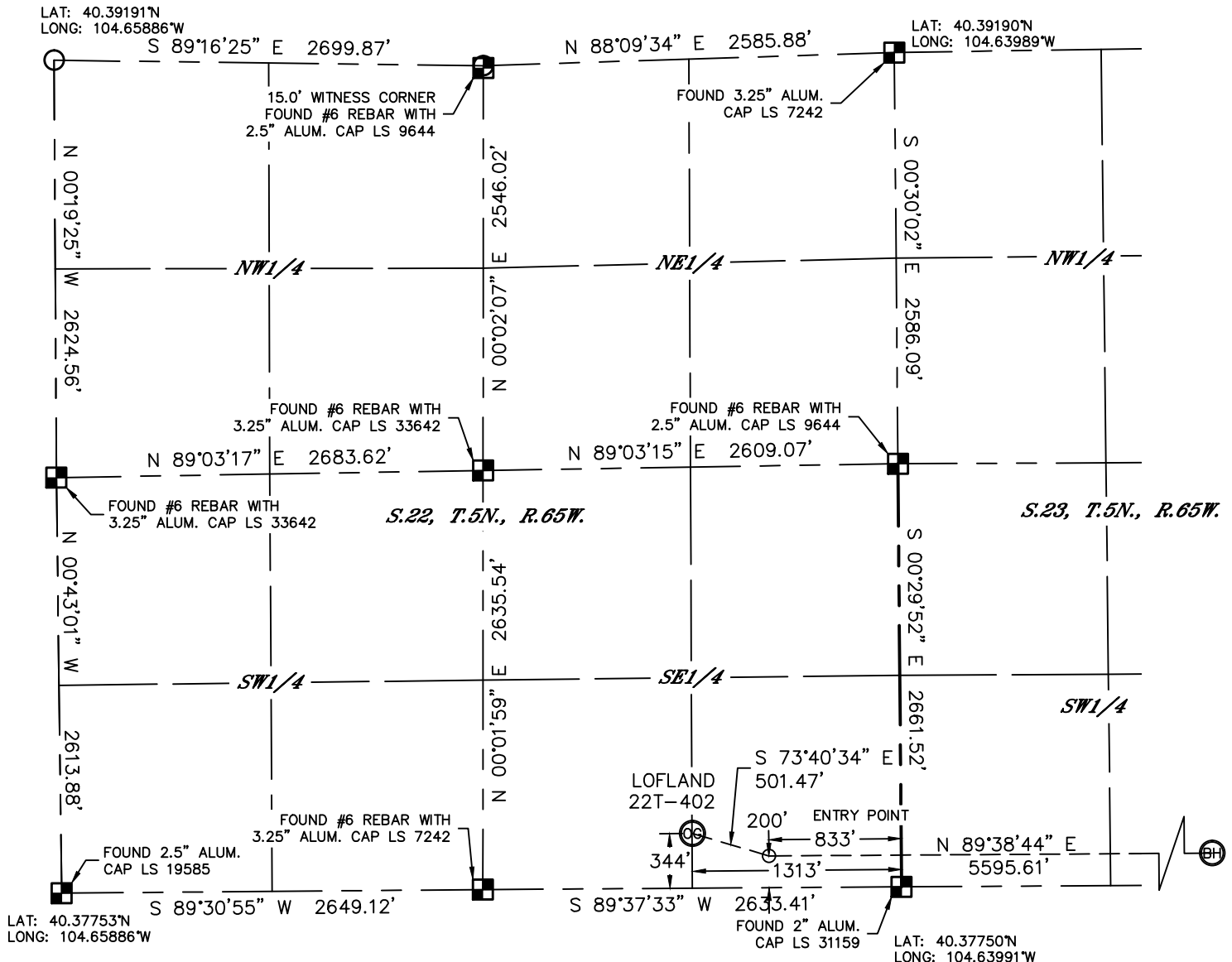


Lat40°, Inc. 1635 Foxtrail Drive, Suite 325 Loveland, CO 970-776-3321

# WELL LOCATION CERTIFICATE

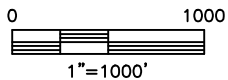
THIS MAP DOES NOT REPRESENT A BOUNDARY SURVEY

SECTION: 22  
TOWNSHIP: 5N  
RANGE: 65W



In accordance with a request from MARK ALESSI with PDC ENERGY, Lat40°, Inc. has determined the surface location of the LOFLAND 22T-402 to be 344' from the SOUTH line and 1313' from the EAST line as measured at right angles from the section lines of Section 22, Township 5 North, Range 65 West and the bottom hole to be 200' from the SOUTH line and 500' from the EAST line as measured at right angles from the section lines of Section 23, Township 5 North, Range 65 West of the Sixth Principal Meridian, County of Weld, State of Colorado.

I hereby state that this Well Location Certificate was prepared by me, or under my direct supervision, that the fieldwork was completed on 5/01/2013, for and on behalf of PDC ENERGY. That this is not a Land Survey Plat or an Improvement Survey Plat, and that it is not to be relied upon for establishment of fence, building, or other future improvement lines.



## NOTE:

- 1) Bearings shown are Grid Bearings of the Colorado State Plane Coordinate System, North Zone, North American Datum 1983/2007. The lineal dimensions as contained herein are based upon the "U.S. Survey Foot."
- 2) Ground elevations are based on an observed GPS elevation (NAVD 1988 DATUM).
- 3) IMPROVEMENTS: See LOCATION DRAWING for all visible improvements within 400' of disturbed area.
- 4) SURFACE USE: CROPLAND
- 5) INSTRUMENT OPERATOR: BRIAN ROTTINGHAUS

## SURFACE LOCATION

LAT: 40.37846°N  
LONG: 104.64462°W  
PDOP: 2.5  
ELEV: 4648'  
1/4,1/4: SE1/4SE1/4  
NEAREST PROPERTY LINE: 344' SOUTH

## BOTTOM HOLE

LAT: 40.37800°N  
LONG: 104.62282°W

## ENTRY POINT

LAT: 40.37806°N  
LONG: 104.64290°W

## NOTE

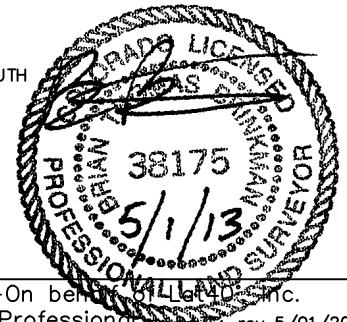
According to Colorado law, you must commence any legal action based upon any defect in this W.L.C. within three years after you discover such defect. In no event, may any action based upon any defect in this survey be commenced more than ten years after the date of the certificate shown hereon. (13-80-105 C.R.S.)

## LEGEND

- = ALIQUOT MONUMENT AS DESCRIBED
- = CALCULATED POSITION

## SHEET 1 OF 2

Brian T. Brinkman—On behalf of Lat40°, Inc.  
Colorado Licensed Professional Land Surveyor No. 38175  
DATE: rev 5/01/2013  
PROJECT#: 2013036





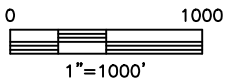
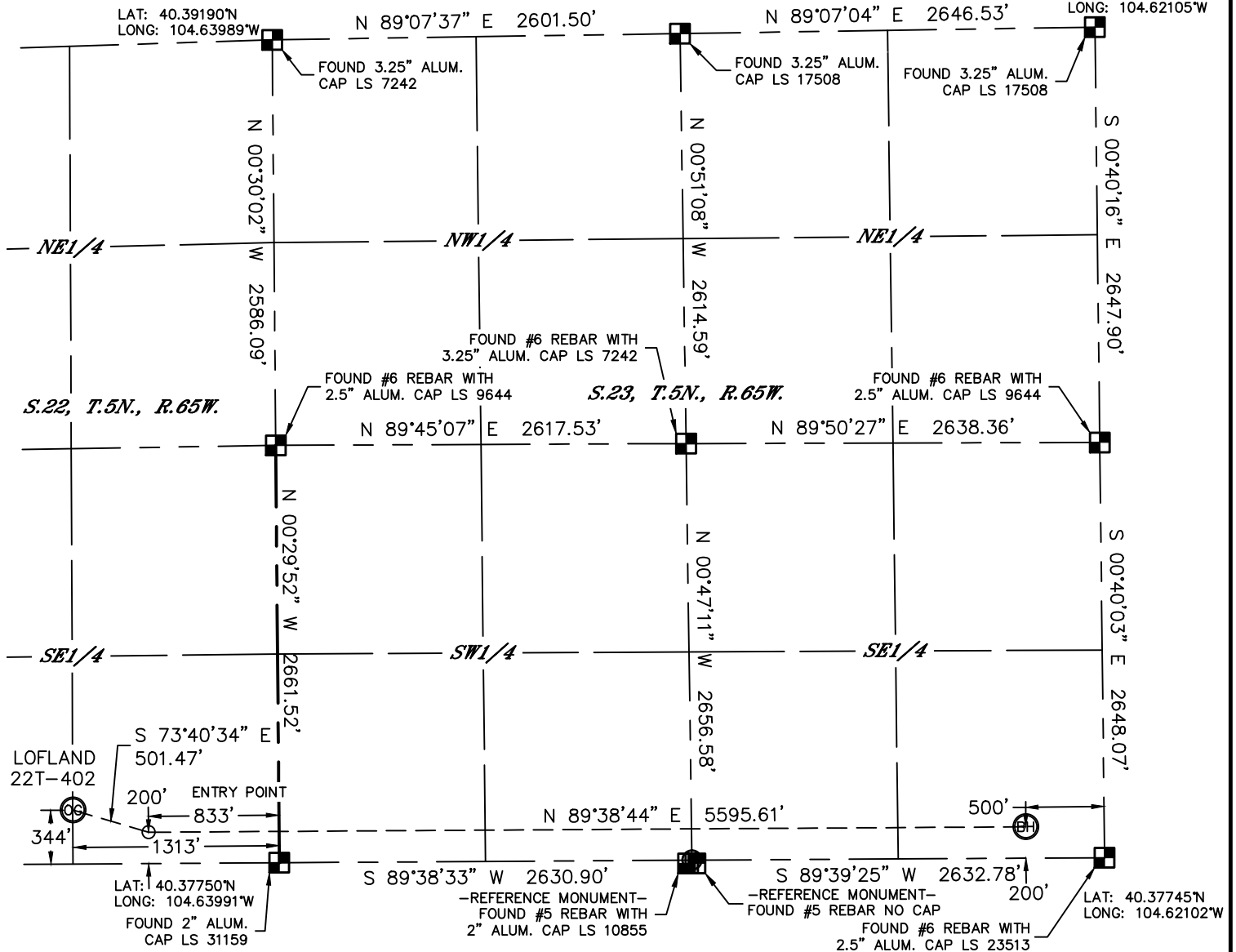
Lat40°, Inc. 1635 Foxtrail Drive, Suite 325 Loveland, CO 970-776-3321

# WELL LOCATION CERTIFICATE

THIS MAP DOES NOT REPRESENT A BOUNDARY SURVEY

SECTION: 22  
TOWNSHIP: 5N  
RANGE: 65W

LAT: 40.39198°N  
LONG: 104.62105°W

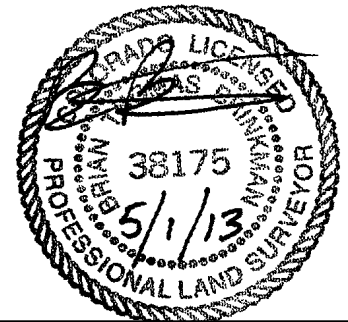


## NOTE

According to Colorado law, you must commence any legal action based upon any defect in this W.L.C. within three years after you discover such defect. In no event, may any action based upon any defect in this survey be commenced more than ten years after the date of the certificate shown hereon. (13-80-105 C.R.S.)

## LEGEND

- = ALIQUOT MONUMENT AS DESCRIBED
- = CALCULATED POSITION



## SHEET 2 OF 2

Brian T. Brinkman—On behalf of Lat40°, Inc.  
Colorado Licensed Professional  
Land Surveyor No. 38175

DATE: rev 5/01/2013  
PROJECT#: 2013036

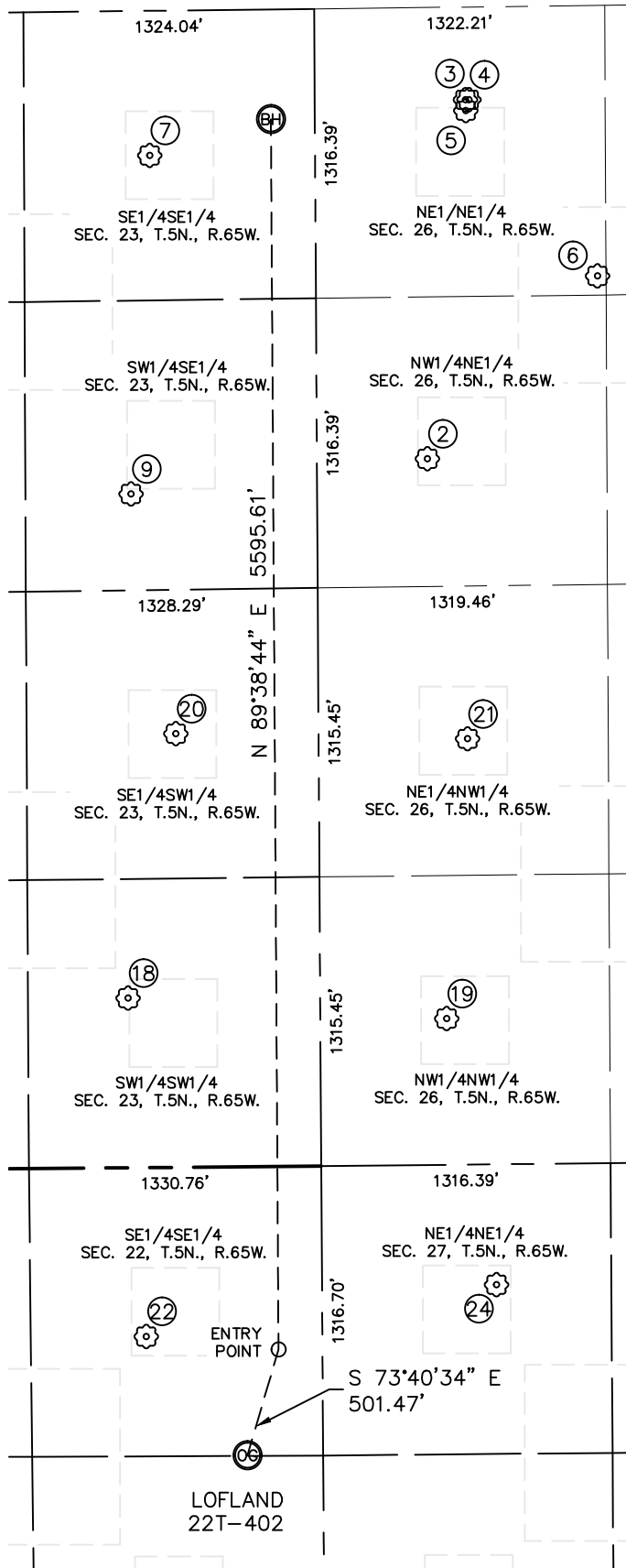


Lat40°, Inc. 1635 Foxtrail Drive, Suite 325 Loveland, CO 970-776-3321

# SITE SKETCH

LOFLAND 22T-402

SECTION: 22  
TOWNSHIP: 5N  
RANGE: 65W



②  
VETTING PM F 26-2  
NW1/4NE1/4  
503' FNL  
2052' FEL  
LAT-40.37609°N  
LONG-104.62838°W  
PDOP: 1.5  
ELEV: 4645'

③  
GEIB 26-26  
NE1/4NE1/4  
685' FNL  
422' FEL  
LAT-40.37557°N  
LONG-104.62253°W  
PDOP: 1.6  
ELEV: 4641'

④  
GEIB 41-26  
NE1/4NE1/4  
701' FNL  
422' FEL  
LAT-40.37553°N  
LONG-104.62253°W  
PDOP: 1.8  
ELEV: 4641'

⑤  
VETTING 1-26  
NE1/4NE1/4  
687' FNL  
471' FEL  
LAT-40.37557°N  
LONG-104.62271°W  
PDOP: 1.8  
ELEV: 4641'

⑥  
GEIB 17-26  
NE1/4NE1/4  
1281' FNL  
1231' FEL  
LAT-40.37394°N  
LONG-104.62543°W  
PDOP: 1.7  
ELEV: 4643'

⑦  
BROWN 1-23  
SE1/4SE1/4  
753' FSL  
658' FEL  
LAT-40.37952°N  
LONG-104.62339°W  
PDOP: 1.7  
ELEV: 4642'

⑨  
BROWN 23-43  
SW1/4SE1/4  
847' FSL  
2197' FEL  
LAT-40.37980°N  
LONG-104.62891°W  
PDOP: 1.8  
ELEV: 4644'

⑩  
BUDERUS 13-23  
SW1/4SW1/4  
875' FSL  
771' FWL  
LAT-40.37989°N  
LONG-104.63714°W  
PDOP: 1.7  
ELEV: 4646'

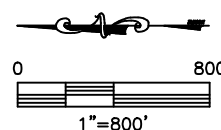
⑪  
H L 26-1  
NW1/4NW1/4  
574' FNL  
665' FWL  
LAT-40.37592°N  
LONG-104.63752°W  
PDOP: 1.9  
ELEV: 4648'

⑫  
MARIE 1-23  
SE1/4SW1/4  
650' FSL  
1972' FWL  
LAT-40.37927°N  
LONG-104.63283°W  
PDOP: 1.9  
ELEV: 4645'

⑬  
ALLES 26-21  
NE1/4NW1/4  
678' FNL  
1936' FWL  
LAT-40.37562°N  
LONG-104.63296°W  
PDOP: 1.6  
ELEV: 4646'

⑭  
LOFLAND 44-22  
SE1/4SE1/4  
802' FSL  
769' FEL  
LAT-40.37971°N  
LONG-104.64266°W  
PDOP: 2.1  
ELEV: 4648'

⑮  
HOFF 1-27  
-NO ACCESS PERMITTED-  
NE1/4NE1/4  
794' FNL (COGCC)  
548' FEL (COGCC)  
LAT-40.37533°N (COGCC)  
LONG-104.64188°W (COGCC)  
PDOP: NA  
ELEV: 4650' (COGCC)



DATE: rev 5/01/2013  
PROJECT#: 2013036