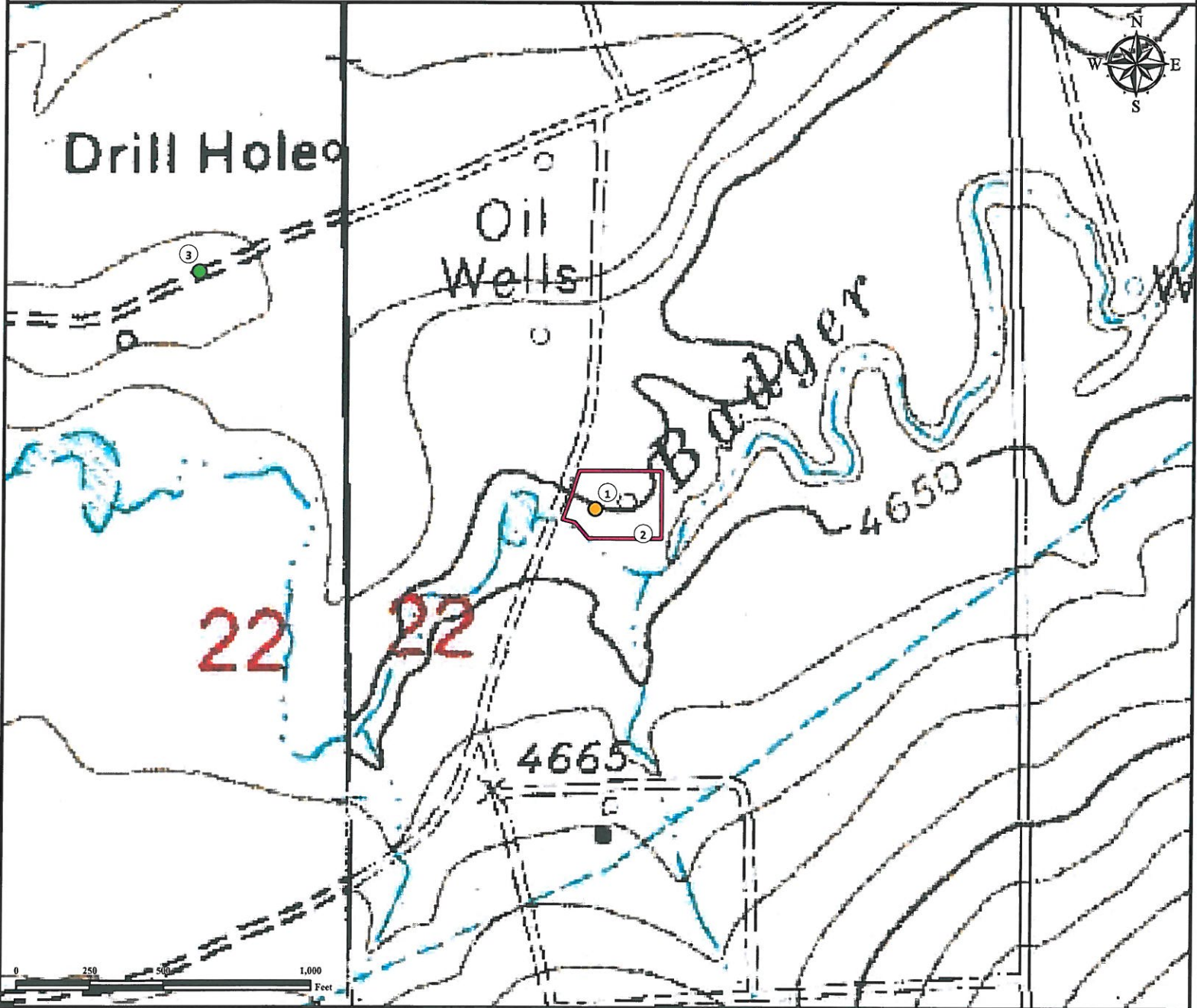


# Reference Area Map

## BADGER CREEK 22-32B

SW¼ NE¼ SECTION 22, TOWNSHIP 2 SOUTH, RANGE 57 WEST OF THE 6TH PRINCIPAL MERIDIAN



1. Proposed Well BADGER CREEK 22-32B.
2. Operational Disturbance Area.
3. Reference Photo Point.

### Legend


- Proposed Well
- Disturbance Area
- Reference Photo Point

### Reference Location

\*\* All Measurements are Made from  
● Reference Photo Point \*\*

Lat: 39.867070° Long: -103.752280° (NAD83)  
Elevation: 4681 Feet

Surface Use: Rangeland



Use our resources to find yours!  
[www.petro-fs.com](http://www.petro-fs.com)  
(303) 928-7128

Field Date: 04/25/2013  
Drafting Date: 05/15/2013  
Drafter: CPO  
Revision:

Data Sources:  
- TOPO courtesy of USGS

Prepared for:

