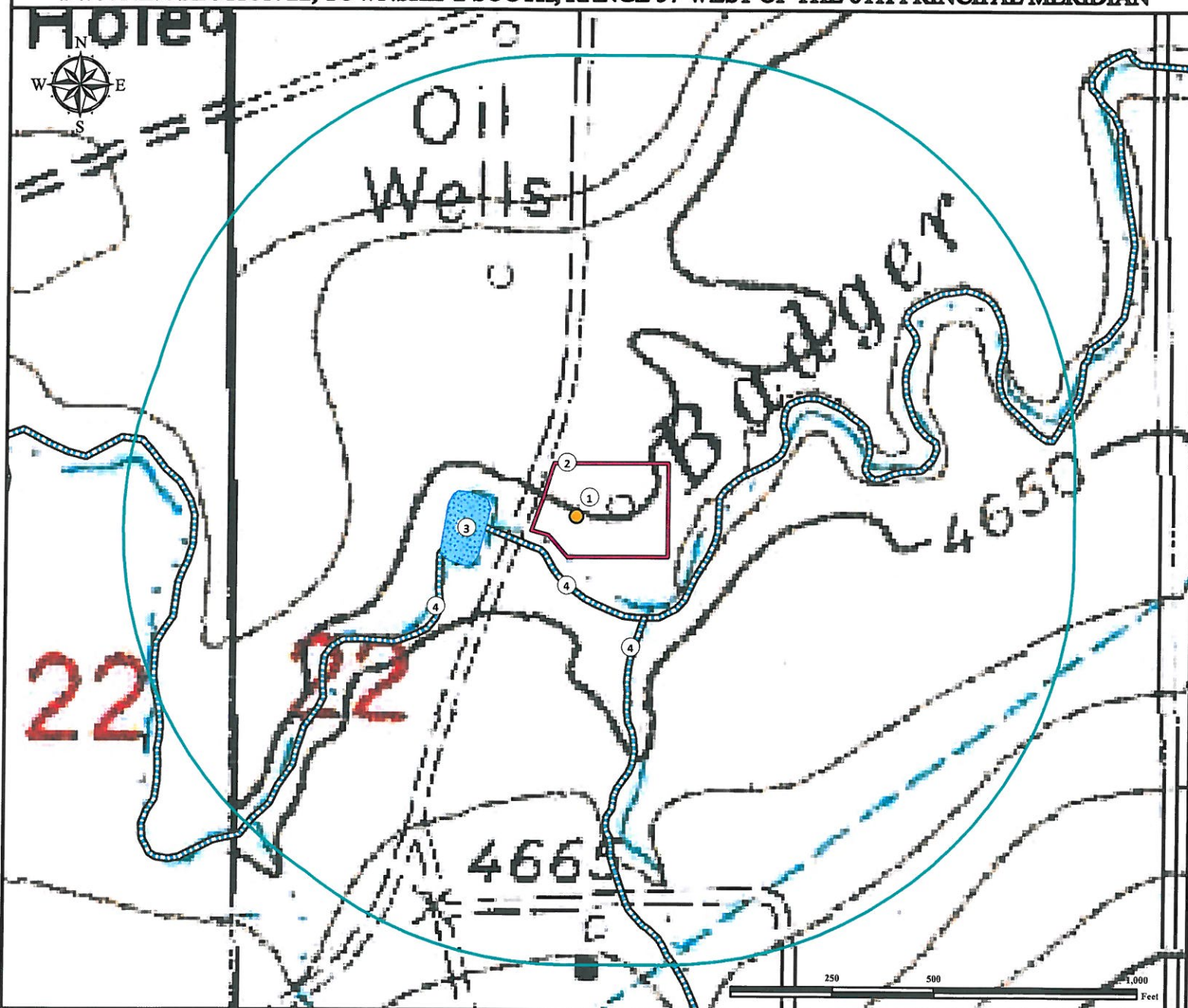


Hydrology Map

BADGER CREEK 22-32B

SW¼ NE¼ SECTION 22, TOWNSHIP 2 SOUTH, RANGE 57 WEST OF THE 6TH PRINCIPAL MERIDIAN



- | | |
|---------------------------------------|---|
| 1. Proposed Well BADGER CREEK 22-32B. | 3. Pond is ±211' W. |
| 2. Operational Disturbance Area. | 4. Streams are ±120' S, ±300' SE, and ±347' SW. |

Legend

- | | | |
|------------------|--------------|--------|
| Proposed Well | 1000' Radius | Stream |
| Disturbance Area | Pond | |

Reference Location

** All measurements are made from
Reference Well BADGER CREEK 22-32B **
Lat: 39.864818° Long: -103.747518° (NAD83)
Elevation: 4651 Feet



Use our resources to find yours!
www.petro-fs.com
(303) 928-7128

Field Date: 04/25/2013
Drafting Date: 05/15/2013
Drafter: CPO
Revision:

Data Sources:
- TOPO courtesy USGS
- Water features courtesy of NHD

Prepared for:

