

T10N, R58W, 6th P.M.

WHITING OIL & GAS CORP.

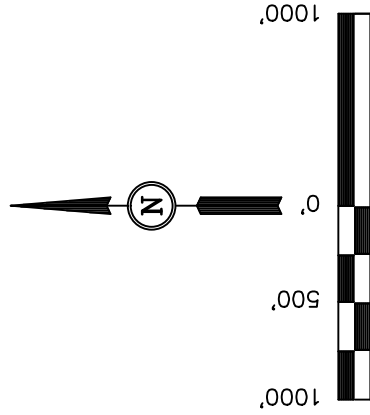
Well location, RAZOR #27K-3407A (SURFACE LOCATION), located as shown in the NE 1/4 SW 1/4 of Section 27, T10N, R58W, 6th P.M., Weld County, Colorado.

BASIS OF ELEVATION

SPOT ELEVATION LOCATED AT THE NORTHEAST CORNER OF SECTION 15, T9N, R58W, 6th P.M. TAKEN FROM THE GATEHOOK SPRING, QUADRANGLE, COLORADO, WELD COUNTY, 7.5 MINUTE QUAD (TOPOGRAPHIC MAP) PUBLISHED BY THE UNITED STATES DEPARTMENT OF THE INTERIOR, GEOLOGICAL SURVEY. SAID ELEVATION IS MARKED AS BEING 4679 FEET.

BASIS OF BEARINGS

BASIS OF BEARINGS IS A G.P.S. OBSERVATION.



CERTIFICATE

THIS IS TO CERTIFY THAT THE ABOVE PLAT WAS PREPARED FROM FIELD NOTES OF ACTUAL SURVEYS MADE BY ME OR UNDER MY SUPERVISION AND THAT THE SAME ARE TRUE AND CORRECT TO THE BEST OF MY KNOWLEDGE AND BELIEF.

REGISTERED LAND SURVEYOR
STATE OF COLORADO
REGISTRATION # 17492
EXPIRATION DATE 03-26-13

REVISED: 03-26-13 A.D.
REVISED: 05-10-12

UNTAH ENGINEERING & LAND SURVEYING
85 SOUTH 200 EAST - VERNAL, UTAH 84078
(435) 789-1017

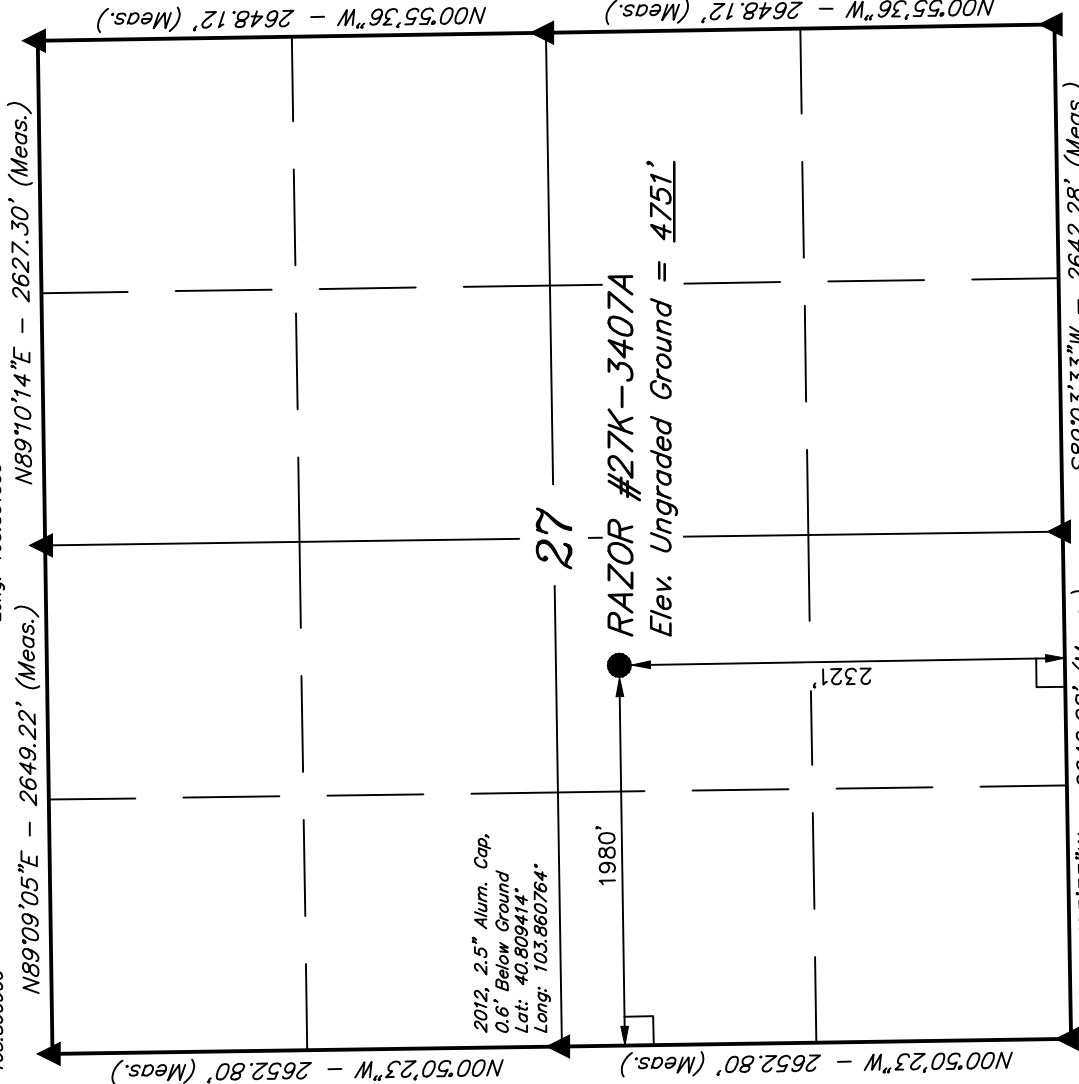
SCALE	1" = 1000'	DATE SURVEYED:	05-08-12	DATE DRAWN:	05-14-12
PARTY	DLS. C.T. W.M.	REFERENCES	G.L.O. PLAT		
WEATHER	COOL	FILE	WHITING OIL & GAS CORP.		

2010 Alum. Cap,
#17492, Flush
W/Ground
Lat: 40.816906°
Long: 103.841650°

2010 Alum. Cap,
Flush W/Ground,
#17492, E-W Fence
Lat: 40.809642°
Long: 103.841694°

2010 Alum. Cap,
Flush W/Ground,
#17492, E-W Fence
Lat: 40.802375°
Long: 103.841542°

PDOP = 1.5	
NAD 83 (SURFACE LOCATION)	
LATITUDE = 40°48'30.94"	(40.808594)
LONGITUDE = 103°51'12.95"	(103.853597)
NAD 27 (SURFACE LOCATION)	
LATITUDE = 40°48'30.99"	(40.808608)
LONGITUDE = 103°51'11.14"	(103.853094)



LEGEND:

- 90° SYMBOL
- PROPOSED WELL HEAD.
- SECTION CORNERS LOCATED.

T10N, R58W, 6th P.M.

WHITING OIL & GAS CORP.

Well location, RAZOR #27K-3407A (TARGET BOTTOM HOLE), located as shown in the SE 1/4 SW 1/4 of Section 34, T10N, R58W, 6th P.M., Weld County, Colorado.

BASIS OF ELEVATION

SPOT ELEVATION LOCATED AT THE NORTHEAST CORNER OF SECTION 15, T9N, R58W, 6th P.M. TAKEN FROM THE GATEHOOK SPRING, QUADRANGLE, COLORADO, WELD COUNTY, 7.5 MINUTE QUAD (TOPOGRAPHIC MAP) PUBLISHED BY THE UNITED STATES DEPARTMENT OF THE INTERIOR, GEOLOGICAL SURVEY. SAID ELEVATION IS MARKED AS BEING 4679 FEET.

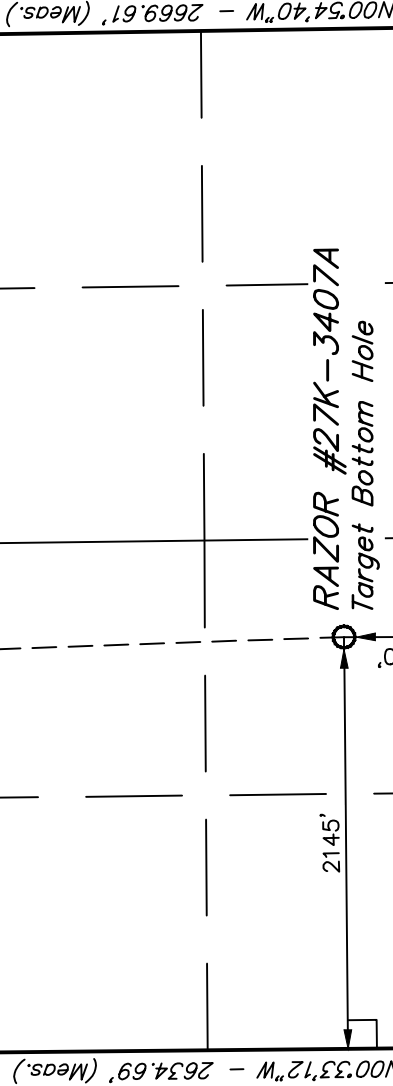
BASIS OF BEARINGS

BASIS OF BEARINGS IS A G.P.S. OBSERVATION.

NOTE:
THE PROPOSED BOTTOM HOLE BEARS
S01°59'42"E 7019.74' FROM THE PROPOSED
WELL HEAD WHICH IS LOCATED IN THE
NE 1/4 SW 1/4 OF SECTION 27, T10N,
R58W, 6th P.M. AT 2321' FSL 1980' FWL.

2010 Alum. Cap,
Flush W/Ground,
E-W Fence
Lat: 40.802375°
Long: 103.841542°

2012, 2.5" Alum.
Cap, 0.2' High
Lat: 40.795050°
Long: 103.841386°



2010 Alum. Cap,
Flush W/Ground,
E-W Fence
Lat: 40.802375°
Long: 103.841542°

2010 Alum. Cap,
0.3' High
Lat: 40.787725°
Long: 103.841233°

2010 Alum. Cap,
Flush W/Ground,
Lat: 40.787700°
Long: 103.850833°

Alum. Cap,
Lat: 40.787675°
Long: 103.860433°

LEGEND:

- = 90° SYMBOL
- = PROPOSED WELL HEAD.
- ▲ = SECTION CORNERS LOCATED.

NAD 83 (TARGET BOTTOM HOLE)	
LATITUDE =	40°47'21.63" (40.789342)
LONGITUDE =	103°51'09.76" (103.852711)
NAD 27 (TARGET BOTTOM HOLE)	
LATITUDE =	40°47'21.68" (40.789356)
LONGITUDE =	103°51'07.95" (103.852208)

CERTIFICATE

THIS IS TO CERTIFY THAT THE ABOVE PLAT WAS PREPARED FROM FIELD NOTES OF ACTUAL SURVEYS MADE BY ME OR UNDER MY SUPERVISION AND THAT THE SAME ARE TRUE AND CORRECT TO THE BEST OF MY KNOWLEDGE AND BELIEF.

REGISTERED LAND SURVEYOR
STATE OF COLORADO
03-29-13

REVISED: 03-29-13

UNTAH ENGINEERING & LAND SURVEYING	
85 SOUTH 200 EAST - VERNAL, UTAH 84078	
(435) 789-1017	
SCALE 1" = 1000'	DATE SURVEYED: 03-20-13
PARTY T.B. C.B. A.D.	DATE DRAWN: 03-26-13
WEATHER COOL	REFERENCES G.L.O. PLAT
FILE WHITING OIL & GAS CORP.	