

# **BILL BARRETT CORP**

**WELD COUNTY, COLORADO**

**Hawkins 5-61-21 Pad**

**Hawkins 5-61-21-4956BH**

**Wellbore #1**

**Plan: Design #1**

## **Standard Planning Report**

**11 June, 2013**



Bill Barrett Corporation

## COMPANY DETAILS: BILL BARRETT CORP

Calculation Method: Minimum Curvature  
Error System: ISCWSA  
Scan Method: Closest Approach 3D  
Error Surface: Elliptical Conic  
Warning Method: Error Ratio

## REFERENCE INFORMATION

Co-ordinate (N/E) Reference: Well Hawkins 5-61-21-4956BH, True North  
Vertical (TVD) Reference: KB @ 4688.0ft (Original Well Elev)  
Section (VS) Reference: Slot - (0.0N, 0.0E)  
Measured Depth Reference: KB @ 4688.0ft (Original Well Elev)  
Calculation Method: Minimum Curvature

## WELL DETAILS: Hawkins 5-61-21-4956BH

+N/-S	+E/-W	Northing	Easting	Latitude	Longitude
0.0	0.0	1384893.81	3355857.40	40° 22' 58.436 N	104° 13' 21.220 W

## SECTION DETAILS

Sec	MD	Inc	Azi	TVD	+N/-S	+E/-W	DLeg	TFace	VSec	Target
1	0.0	0.00	0.00	0.0	0.0	0.0	0.00	0.00	0.0	
2	900.0	0.00	0.00	900.0	0.0	0.0	0.00	0.00	0.0	
3	1229.1	4.94	223.41	1228.7	-10.3	-9.7	1.50	223.41	-8.9	
4	4721.7	4.94	223.41	4708.3	-228.6	-216.3	0.00	0.00	-198.3	
5	5050.8	0.00	0.00	5037.0	-238.9	-226.0	1.50	180.00	-207.2	
6	5550.8	0.00	0.00	5537.0	-238.9	-226.0	0.00	0.00	-207.2	
7	6453.4	90.26	91.27	6110.0	-251.7	349.4	10.00	91.27	367.5	Hawkins 4956BH LP
8	10623.7	90.26	91.27	6091.0	-344.4	4518.6	0.00	0.00	4531.7	Hawkins 4956BH PBHL

## PROJECT DETAILS: WELD COUNTY, COLORADO

Geodetic System: US State Plane 1983  
Datum: North American Datum 1983  
Ellipsoid: GRS 1980  
Zone: Colorado Northern Zone

## FORMATION TOP DETAILS

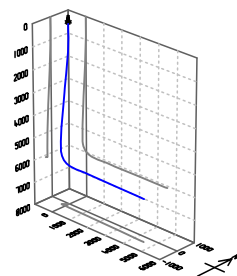
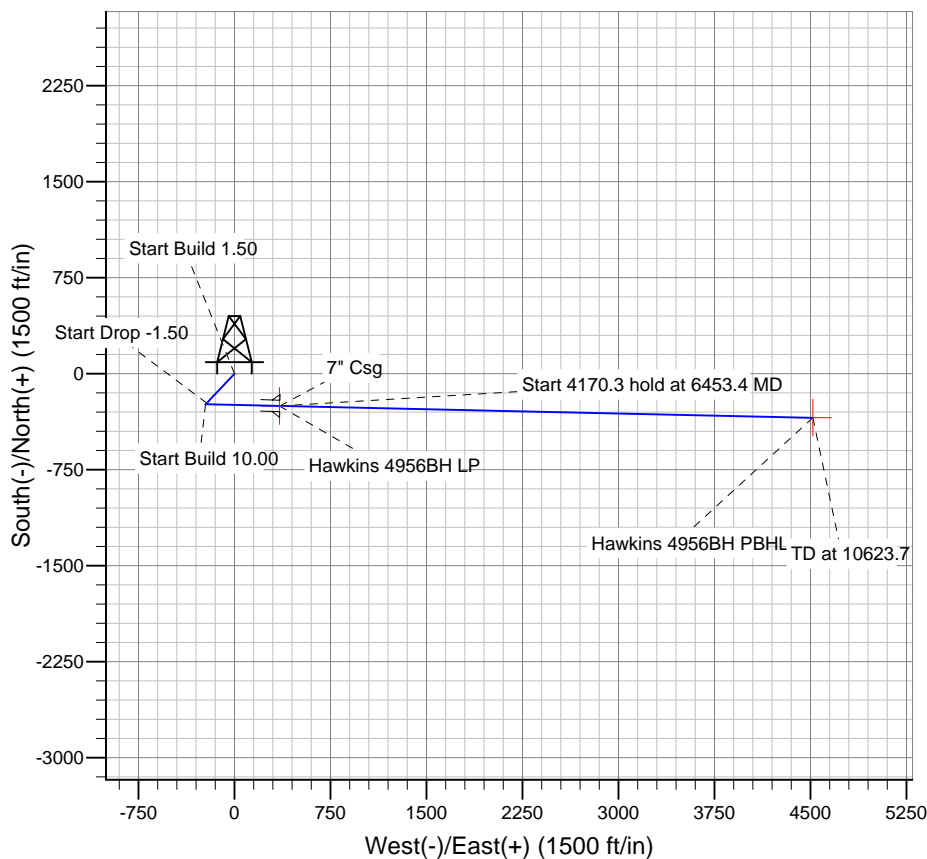
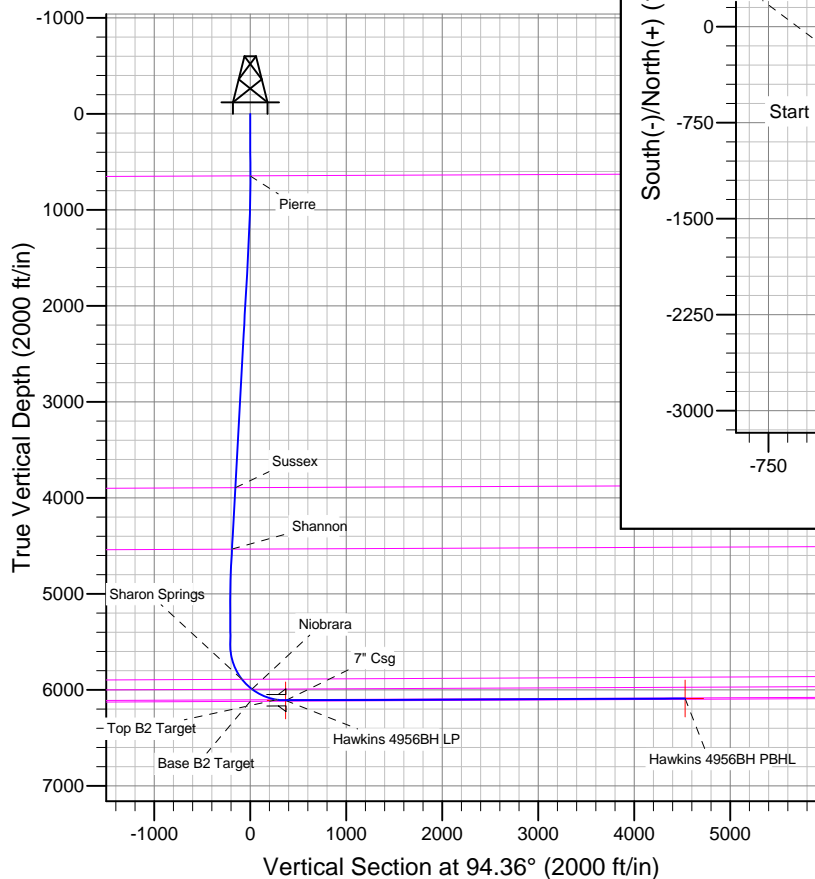
TVDPath	MDPath	Formation
647.0	647.0	Base B2 Target
3894.7	3905.1	Pierre
4535.9	4548.6	Sussex
5890.4	5931.7	Sharon Springs
5994.0	6079.7	Niobrara
6103.8	6366.6	Top B2 Target

## CASING DETAILS

TVD	MD	Name	Size
6109.9	6460.0	7" Csg	7

## WELLBORE TARGET DETAILS

Name	TVD	+N/-S	+E/-W	Shape
Hawkins 4956BH PBHL	6091.0	-343.8	4518.7	Point
Hawkins 4956BH LP	6110.0	-251.7	350.2	Point



Azimuths to True North  
Magnetic North: 8.30°  
Magnetic Field  
Strength: 52970.4snT  
Dip Angle: 67.06°  
Date: 6/11/2013  
Model: IGRF2010

# Bill Barrett Corp

## Planning Report

<b>Database:</b>	Compass	<b>Local Co-ordinate Reference:</b>	Well Hawkins 5-61-21-4956BH
<b>Company:</b>	BILL BARRETT CORP	<b>TVD Reference:</b>	KB @ 4688.0ft (Original Well Elev)
<b>Project:</b>	WELD COUNTY, COLORADO	<b>MD Reference:</b>	KB @ 4688.0ft (Original Well Elev)
<b>Site:</b>	Hawkins 5-61-21 Pad	<b>North Reference:</b>	True
<b>Well:</b>	Hawkins 5-61-21-4956BH	<b>Survey Calculation Method:</b>	Minimum Curvature
<b>Wellbore:</b>	Wellbore #1		
<b>Design:</b>	Design #1		

<b>Project</b>	WELD COUNTY, COLORADO		
<b>Map System:</b>	US State Plane 1983	<b>System Datum:</b>	Mean Sea Level
<b>Geo Datum:</b>	North American Datum 1983		
<b>Map Zone:</b>	Colorado Northern Zone		

Site		Hawkins 5-61-21 Pad			
Site Position:		Northing:	1,384,873.79 ft	Latitude:	40° 22' 58.238 N
From:	Lat/Long	Easting:	3,355,857.44 ft	Longitude:	104° 13' 21.223 W
Position Uncertainty:	0.0 ft	Slot Radius:	"	Grid Convergence:	0.83 °

Well		Hawkins 5-61-21-4956BH				
Well Position	+N-S	20.0 ft	Northing:	1,384,893.81 ft	Latitude:	40° 22' 58.436 N
	+E-W	0.2 ft	Easting:	3,355,857.40 ft	Longitude:	104° 13' 21.220 W
Position Uncertainty		0.0 ft	Wellhead Elevation:	ft	Ground Level:	4,665.0 ft

<b>Wellbore</b>	Wellbore #1				
<b>Magnetics</b>	<b>Model Name</b>	<b>Sample Date</b>	<b>Declination (°)</b>	<b>Dip Angle (°)</b>	<b>Field Strength (nT)</b>
	IGRF2010	6/11/2013	8.30	67.06	52,970

<b>Design</b>	Design #1				
<b>Audit Notes:</b>					
<b>Version:</b>	<b>Phase:</b>	PLAN		<b>Tie On Depth:</b>	0.0
<b>Vertical Section:</b>	<b>Depth From (TVD) (ft)</b>	<b>+N/-S (ft)</b>	<b>+E/-W (ft)</b>	<b>Direction (°)</b>	
	0.0	0.0	0.0	94.36	

<b>Plan Sections</b>										
Measured Depth (ft)	Inclination (°)	Azimuth (°)	Vertical Depth (ft)	+N/-S (ft)	+E/-W (ft)	Dogleg Rate (°/100ft)	Build Rate (°/100ft)	Turn Rate (°/100ft)	TFO (°)	Target
0.0	0.00	0.00	0.0	0.0	0.0	0.00	0.00	0.00	0.00	
900.0	0.00	0.00	900.0	0.0	0.0	0.00	0.00	0.00	0.00	
1,229.1	4.94	223.41	1,228.7	-10.3	-9.7	1.50	1.50	0.00	223.41	
4,721.7	4.94	223.41	4,708.3	-228.6	-216.3	0.00	0.00	0.00	0.00	
5,050.8	0.00	0.00	5,037.0	-238.9	-226.0	1.50	-1.50	0.00	180.00	
5,550.8	0.00	0.00	5,537.0	-238.9	-226.0	0.00	0.00	0.00	0.00	
6,453.4	90.26	91.27	6,110.0	-251.7	349.4	10.00	10.00	0.00	91.27	Hawkins 4956BH LI
10,623.7	90.26	91.27	6,091.0	-344.4	4,518.6	0.00	0.00	0.00	0.00	Hawkins 4956BH P

# Bill Barrett Corp

## Planning Report

<b>Database:</b>	Compass	<b>Local Co-ordinate Reference:</b>	Well Hawkins 5-61-21-4956BH
<b>Company:</b>	BILL BARRETT CORP	<b>TVD Reference:</b>	KB @ 4688.0ft (Original Well Elev)
<b>Project:</b>	WELD COUNTY, COLORADO	<b>MD Reference:</b>	KB @ 4688.0ft (Original Well Elev)
<b>Site:</b>	Hawkins 5-61-21 Pad	<b>North Reference:</b>	True
<b>Well:</b>	Hawkins 5-61-21-4956BH	<b>Survey Calculation Method:</b>	Minimum Curvature
<b>Wellbore:</b>	Wellbore #1		
<b>Design:</b>	Design #1		

Planned Survey									
Measured Depth (ft)	Inclination (°)	Azimuth (°)	Vertical Depth (ft)	+N/-S (ft)	+E/-W (ft)	Vertical Section (ft)	Dogleg Rate (°/100ft)	Build Rate (°/100ft)	Turn Rate (°/100ft)
0.0	0.00	0.00	0.0	0.0	0.0	0.0	0.00	0.00	0.00
100.0	0.00	0.00	100.0	0.0	0.0	0.0	0.00	0.00	0.00
200.0	0.00	0.00	200.0	0.0	0.0	0.0	0.00	0.00	0.00
300.0	0.00	0.00	300.0	0.0	0.0	0.0	0.00	0.00	0.00
400.0	0.00	0.00	400.0	0.0	0.0	0.0	0.00	0.00	0.00
500.0	0.00	0.00	500.0	0.0	0.0	0.0	0.00	0.00	0.00
600.0	0.00	0.00	600.0	0.0	0.0	0.0	0.00	0.00	0.00
647.0	0.00	0.00	647.0	0.0	0.0	0.0	0.00	0.00	0.00
<b>Pierre</b>									
700.0	0.00	0.00	700.0	0.0	0.0	0.0	0.00	0.00	0.00
800.0	0.00	0.00	800.0	0.0	0.0	0.0	0.00	0.00	0.00
900.0	0.00	0.00	900.0	0.0	0.0	0.0	0.00	0.00	0.00
1,000.0	1.50	223.41	1,000.0	-1.0	-0.9	-0.8	1.50	1.50	0.00
1,100.0	3.00	223.41	1,099.9	-3.8	-3.6	-3.3	1.50	1.50	0.00
1,200.0	4.50	223.41	1,199.7	-8.6	-8.1	-7.4	1.50	1.50	0.00
1,229.1	4.94	223.41	1,228.7	-10.3	-9.7	-8.9	1.50	1.50	0.00
1,300.0	4.94	223.41	1,299.3	-14.7	-13.9	-12.8	0.00	0.00	0.00
1,400.0	4.94	223.41	1,399.0	-21.0	-19.8	-18.2	0.00	0.00	0.00
1,500.0	4.94	223.41	1,498.6	-27.2	-25.8	-23.6	0.00	0.00	0.00
1,600.0	4.94	223.41	1,598.2	-33.5	-31.7	-29.0	0.00	0.00	0.00
1,700.0	4.94	223.41	1,697.8	-39.7	-37.6	-34.5	0.00	0.00	0.00
1,800.0	4.94	223.41	1,797.5	-46.0	-43.5	-39.9	0.00	0.00	0.00
1,900.0	4.94	223.41	1,897.1	-52.2	-49.4	-45.3	0.00	0.00	0.00
2,000.0	4.94	223.41	1,996.7	-58.5	-55.3	-50.7	0.00	0.00	0.00
2,100.0	4.94	223.41	2,096.4	-64.7	-61.2	-56.1	0.00	0.00	0.00
2,200.0	4.94	223.41	2,196.0	-71.0	-67.1	-61.6	0.00	0.00	0.00
2,300.0	4.94	223.41	2,295.6	-77.2	-73.1	-67.0	0.00	0.00	0.00
2,400.0	4.94	223.41	2,395.3	-83.5	-79.0	-72.4	0.00	0.00	0.00
2,500.0	4.94	223.41	2,494.9	-89.7	-84.9	-77.8	0.00	0.00	0.00
2,600.0	4.94	223.41	2,594.5	-96.0	-90.8	-83.2	0.00	0.00	0.00
2,700.0	4.94	223.41	2,694.1	-102.2	-96.7	-88.7	0.00	0.00	0.00
2,800.0	4.94	223.41	2,793.8	-108.5	-102.6	-94.1	0.00	0.00	0.00
2,900.0	4.94	223.41	2,893.4	-114.7	-108.5	-99.5	0.00	0.00	0.00
3,000.0	4.94	223.41	2,993.0	-121.0	-114.5	-104.9	0.00	0.00	0.00
3,100.0	4.94	223.41	3,092.7	-127.2	-120.4	-110.4	0.00	0.00	0.00
3,200.0	4.94	223.41	3,192.3	-133.5	-126.3	-115.8	0.00	0.00	0.00
3,300.0	4.94	223.41	3,291.9	-139.7	-132.2	-121.2	0.00	0.00	0.00
3,400.0	4.94	223.41	3,391.5	-146.0	-138.1	-126.6	0.00	0.00	0.00
3,500.0	4.94	223.41	3,491.2	-152.2	-144.0	-132.0	0.00	0.00	0.00
3,600.0	4.94	223.41	3,590.8	-158.5	-149.9	-137.5	0.00	0.00	0.00
3,700.0	4.94	223.41	3,690.4	-164.7	-155.8	-142.9	0.00	0.00	0.00
3,800.0	4.94	223.41	3,790.1	-171.0	-161.8	-148.3	0.00	0.00	0.00
3,900.0	4.94	223.41	3,889.7	-177.3	-167.7	-153.7	0.00	0.00	0.00
3,905.1	4.94	223.41	3,894.7	-177.6	-168.0	-154.0	0.00	0.00	0.00
<b>Sussex</b>									
4,000.0	4.94	223.41	3,989.3	-183.5	-173.6	-159.1	0.00	0.00	0.00
4,100.0	4.94	223.41	4,088.9	-189.8	-179.5	-164.6	0.00	0.00	0.00
4,200.0	4.94	223.41	4,188.6	-196.0	-185.4	-170.0	0.00	0.00	0.00
4,300.0	4.94	223.41	4,288.2	-202.3	-191.3	-175.4	0.00	0.00	0.00
4,400.0	4.94	223.41	4,387.8	-208.5	-197.2	-180.8	0.00	0.00	0.00
4,500.0	4.94	223.41	4,487.5	-214.8	-203.2	-186.2	0.00	0.00	0.00
4,548.6	4.94	223.41	4,535.9	-217.8	-206.0	-188.9	0.00	0.00	0.00
<b>Shannon</b>									

# Bill Barrett Corp

## Planning Report

<b>Database:</b>	Compass	<b>Local Co-ordinate Reference:</b>	Well Hawkins 5-61-21-4956BH
<b>Company:</b>	BILL BARRETT CORP	<b>TVD Reference:</b>	KB @ 4688.0ft (Original Well Elev)
<b>Project:</b>	WELD COUNTY, COLORADO	<b>MD Reference:</b>	KB @ 4688.0ft (Original Well Elev)
<b>Site:</b>	Hawkins 5-61-21 Pad	<b>North Reference:</b>	True
<b>Well:</b>	Hawkins 5-61-21-4956BH	<b>Survey Calculation Method:</b>	Minimum Curvature
<b>Wellbore:</b>	Wellbore #1		
<b>Design:</b>	Design #1		

Planned Survey									
Measured Depth (ft)	Inclination (°)	Azimuth (°)	Vertical Depth (ft)	+N/-S (ft)	+E/-W (ft)	Vertical Section (ft)	Dogleg Rate (°/100ft)	Build Rate (°/100ft)	Turn Rate (°/100ft)
4,600.0	4.94	223.41	4,587.1	-221.0	-209.1	-191.7	0.00	0.00	0.00
4,700.0	4.94	223.41	4,686.7	-227.3	-215.0	-197.1	0.00	0.00	0.00
4,721.7	4.94	223.41	4,708.3	-228.6	-216.3	-198.3	0.00	0.00	0.00
4,800.0	3.76	223.41	4,786.4	-232.9	-220.3	-202.0	1.50	-1.50	0.00
4,900.0	2.26	223.41	4,886.3	-236.7	-224.0	-205.3	1.50	-1.50	0.00
5,000.0	0.76	223.41	4,986.2	-238.7	-225.8	-207.0	1.50	-1.50	0.00
5,050.8	0.00	0.00	5,037.0	-238.9	-226.0	-207.2	1.50	-1.50	0.00
5,100.0	0.00	0.00	5,086.2	-238.9	-226.0	-207.2	0.00	0.00	0.00
5,200.0	0.00	0.00	5,186.2	-238.9	-226.0	-207.2	0.00	0.00	0.00
5,300.0	0.00	0.00	5,286.2	-238.9	-226.0	-207.2	0.00	0.00	0.00
5,400.0	0.00	0.00	5,386.2	-238.9	-226.0	-207.2	0.00	0.00	0.00
5,500.0	0.00	0.00	5,486.2	-238.9	-226.0	-207.2	0.00	0.00	0.00
5,550.8	0.00	0.00	5,537.0	-238.9	-226.0	-207.2	0.00	0.00	0.00
5,600.0	4.92	91.27	5,586.2	-239.0	-223.9	-205.1	10.00	10.00	0.00
5,700.0	14.92	91.27	5,684.6	-239.3	-206.7	-187.9	10.00	10.00	0.00
5,800.0	24.92	91.27	5,778.4	-240.1	-172.7	-153.9	10.00	10.00	0.00
5,900.0	34.92	91.27	5,865.0	-241.2	-122.8	-104.2	10.00	10.00	0.00
5,931.7	38.09	91.27	5,890.4	-241.6	-104.0	-85.4	10.00	10.00	0.00
<b>Sharon Springs</b>									
6,000.0	44.92	91.27	5,941.6	-242.6	-58.8	-40.2	10.00	10.00	0.00
6,079.7	52.90	91.27	5,994.0	-244.0	1.3	19.8	10.00	10.00	0.00
<b>Niobrara</b>									
6,100.0	54.92	91.27	6,005.9	-244.3	17.6	36.2	10.00	10.00	0.00
6,200.0	64.92	91.27	6,056.0	-246.2	104.0	122.5	10.00	10.00	0.00
6,300.0	74.92	91.27	6,090.2	-248.3	197.8	216.1	10.00	10.00	0.00
6,366.6	81.58	91.27	6,103.8	-249.8	262.9	281.2	10.00	10.00	0.00
<b>Top B2 Target</b>									
6,400.0	84.92	91.27	6,107.7	-250.5	296.1	314.3	10.00	10.00	0.00
6,453.4	90.26	91.27	6,110.0	-251.7	349.4	367.5	10.00	10.00	0.00
6,454.2	90.26	91.27	6,109.9	-251.7	350.2	368.3	0.00	0.00	0.00
<b>Hawkins 4956BH LP</b>									
6,460.0	90.26	91.27	6,109.9	-251.8	356.0	374.2	0.00	0.00	0.00
<b>7" Csg</b>									
6,500.0	90.26	91.27	6,109.7	-252.7	396.0	414.1	0.00	0.00	0.00
6,600.0	90.26	91.27	6,109.3	-255.0	496.0	514.0	0.00	0.00	0.00
6,700.0	90.26	91.27	6,108.8	-257.2	596.0	613.8	0.00	0.00	0.00
6,800.0	90.26	91.27	6,108.4	-259.4	696.0	713.7	0.00	0.00	0.00
6,900.0	90.26	91.27	6,107.9	-261.6	795.9	813.5	0.00	0.00	0.00
7,000.0	90.26	91.27	6,107.5	-263.8	895.9	913.4	0.00	0.00	0.00
7,100.0	90.26	91.27	6,107.0	-266.1	995.9	1,013.2	0.00	0.00	0.00
7,200.0	90.26	91.27	6,106.6	-268.3	1,095.9	1,113.1	0.00	0.00	0.00
7,300.0	90.26	91.27	6,106.1	-270.5	1,195.8	1,212.9	0.00	0.00	0.00
7,400.0	90.26	91.27	6,105.7	-272.7	1,295.8	1,312.8	0.00	0.00	0.00
7,500.0	90.26	91.27	6,105.2	-275.0	1,395.8	1,412.6	0.00	0.00	0.00
7,600.0	90.26	91.27	6,104.7	-277.2	1,495.8	1,512.5	0.00	0.00	0.00
7,700.0	90.26	91.27	6,104.3	-279.4	1,595.7	1,612.3	0.00	0.00	0.00
7,800.0	90.26	91.27	6,103.8	-281.6	1,695.7	1,712.2	0.00	0.00	0.00
7,900.0	90.26	91.27	6,103.4	-283.8	1,795.7	1,812.1	0.00	0.00	0.00
8,000.0	90.26	91.27	6,102.9	-286.1	1,895.6	1,911.9	0.00	0.00	0.00
8,100.0	90.26	91.27	6,102.5	-288.3	1,995.6	2,011.8	0.00	0.00	0.00
8,200.0	90.26	91.27	6,102.0	-290.5	2,095.6	2,111.6	0.00	0.00	0.00
8,300.0	90.26	91.27	6,101.6	-292.7	2,195.6	2,211.5	0.00	0.00	0.00
8,400.0	90.26	91.27	6,101.1	-295.0	2,295.5	2,311.3	0.00	0.00	0.00
8,500.0	90.26	91.27	6,100.7	-297.2	2,395.5	2,411.2	0.00	0.00	0.00

# Bill Barrett Corp

## Planning Report

<b>Database:</b>	Compass	<b>Local Co-ordinate Reference:</b>	Well Hawkins 5-61-21-4956BH
<b>Company:</b>	BILL BARRETT CORP	<b>TVD Reference:</b>	KB @ 4688.0ft (Original Well Elev)
<b>Project:</b>	WELD COUNTY, COLORADO	<b>MD Reference:</b>	KB @ 4688.0ft (Original Well Elev)
<b>Site:</b>	Hawkins 5-61-21 Pad	<b>North Reference:</b>	True
<b>Well:</b>	Hawkins 5-61-21-4956BH	<b>Survey Calculation Method:</b>	Minimum Curvature
<b>Wellbore:</b>	Wellbore #1		
<b>Design:</b>	Design #1		

Planned Survey										
Measured Depth (ft)	Inclination (°)	Azimuth (°)	Vertical Depth (ft)	+N/-S (ft)	+E/-W (ft)	Vertical Section (ft)	Dogleg Rate (°/100ft)	Build Rate (°/100ft)	Turn Rate (°/100ft)	
8,600.0	90.26	91.27	6,100.2	-299.4	2,495.5	2,511.0	0.00	0.00	0.00	
8,700.0	90.26	91.27	6,099.8	-301.6	2,595.5	2,610.9	0.00	0.00	0.00	
8,800.0	90.26	91.27	6,099.3	-303.9	2,695.4	2,710.7	0.00	0.00	0.00	
8,900.0	90.26	91.27	6,098.9	-306.1	2,795.4	2,810.6	0.00	0.00	0.00	
9,000.0	90.26	91.27	6,098.4	-308.3	2,895.4	2,910.4	0.00	0.00	0.00	
9,100.0	90.26	91.27	6,097.9	-310.5	2,995.4	3,010.3	0.00	0.00	0.00	
9,200.0	90.26	91.27	6,097.5	-312.7	3,095.3	3,110.2	0.00	0.00	0.00	
9,300.0	90.26	91.27	6,097.0	-315.0	3,195.3	3,210.0	0.00	0.00	0.00	
9,400.0	90.26	91.27	6,096.6	-317.2	3,295.3	3,309.9	0.00	0.00	0.00	
9,500.0	90.26	91.27	6,096.1	-319.4	3,395.3	3,409.7	0.00	0.00	0.00	
9,600.0	90.26	91.27	6,095.7	-321.6	3,495.2	3,509.6	0.00	0.00	0.00	
9,700.0	90.26	91.27	6,095.2	-323.9	3,595.2	3,609.4	0.00	0.00	0.00	
9,800.0	90.26	91.27	6,094.8	-326.1	3,695.2	3,709.3	0.00	0.00	0.00	
9,900.0	90.26	91.27	6,094.3	-328.3	3,795.2	3,809.1	0.00	0.00	0.00	
10,000.0	90.26	91.27	6,093.9	-330.5	3,895.1	3,909.0	0.00	0.00	0.00	
10,100.0	90.26	91.27	6,093.4	-332.7	3,995.1	4,008.8	0.00	0.00	0.00	
10,200.0	90.26	91.27	6,093.0	-335.0	4,095.1	4,108.7	0.00	0.00	0.00	
10,300.0	90.26	91.27	6,092.5	-337.2	4,195.1	4,208.6	0.00	0.00	0.00	
10,400.0	90.26	91.27	6,092.0	-339.4	4,295.0	4,308.4	0.00	0.00	0.00	
10,500.0	90.26	91.27	6,091.6	-341.6	4,395.0	4,408.3	0.00	0.00	0.00	
10,600.0	90.26	91.27	6,091.1	-343.9	4,495.0	4,508.1	0.00	0.00	0.00	
10,623.7	90.26	91.27	6,091.0	-344.4	4,518.6	4,531.7	0.00	0.00	0.00	
Hawkins 4956BH PBHL										

Casing Points					
Measured Depth (ft)	Vertical Depth (ft)	Name	Casing Diameter (")	Hole Diameter (")	
6,460.0	6,109.9	7" Csg	7	8-3/4	

Formations					
Measured Depth (ft)	Vertical Depth (ft)	Name	Lithology	Dip (°)	Dip Direction (°)
647.0	647.0	Pierre		-0.26	91.27
3,905.1	3,894.0	Sussex		-0.26	91.27
4,548.6	4,535.0	Shannon		-0.26	91.27
5,931.7	5,890.0	Sharon Springs		-0.26	91.27
6,079.7	5,994.0	Niobrara		-0.26	91.27
6,366.6	6,105.0	Top B2 Target		-0.26	91.27
	6,120.0	Base B2 Target		-0.26	91.27