

# **BILL BARRETT CORP**

**WELD COUNTY, COLORADO**

**Hawkins 5-61-21 Pad**

**Hawkins 5-61-21-4841BH**

**Wellbore #1**

**Plan: Design #1**

## **Standard Planning Report**

**12 June, 2013**



**Bill Barrett Corporation**

## COMPANY DETAILS: BILL BARRETT CORP

Calculation Method: Minimum Curvature  
Error System: ISCWSA  
Scan Method: Closest Approach 3D  
Error Surface: Elliptical Conic  
Warning Method: Error Ratio

## REFERENCE INFORMATION

Co-ordinate (N/E) Reference: Well Hawkins 5-61-21-4841BH, True North  
Vertical (TVD) Reference: KB @ 4688.0ft (Original Well Elev)  
Section (VS) Reference: Slot - (0.0N, 0.0E)  
Measured Depth Reference: KB @ 4688.0ft (Original Well Elev)  
Calculation Method: Minimum Curvature

## WELL DETAILS: Hawkins 5-61-21-4841BH

+N/-S	+E/-W	Northing	Easting	Latitude	Longitude
0.0	0.0	1384913.86	3355857.42	40° 22' 58.634 N	104° 13' 21.216 W

## SECTION DETAILS

Sec	MD	Inc	Azi	TVD	+N/-S	+E/-W	DLeg	TFace	VSec	Target
1	0.0	0.00	0.00	0.0	0.0	0.0	0.00	0.00	0.0	
2	1000.0	0.00	0.00	1000.0	0.0	0.0	0.00	0.00	0.0	
3	1452.1	6.78	327.86	1451.0	22.6	-14.2	1.50	327.86	-12.9	
4	4610.1	6.78	327.86	4587.0	338.4	-212.6	0.00	0.00	-193.1	
5	5062.2	0.00	0.00	5038.0	361.0	-226.8	1.50	180.00	-206.1	
6	5562.2	0.00	0.00	5538.0	361.0	-226.8	0.00	0.00	-206.1	
7	6464.7	90.25	91.27	6111.0	348.3	348.5	10.00	91.27	367.6	Hawkins 4841BH LP
8	10640.4	90.25	91.27	6092.7	256.0	4523.2	0.00	0.00	4530.4	Hawkins 4841BH PBHL

## PROJECT DETAILS: WELD COUNTY, COLORADO

Geodetic System: US State Plane 1983  
Datum: North American Datum 1983  
Ellipsoid: GRS 1980  
Zone: Colorado Northern Zone

## FORMATION TOP DETAILS

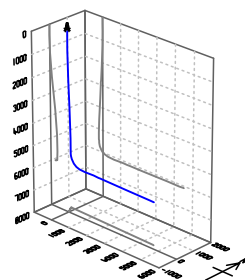
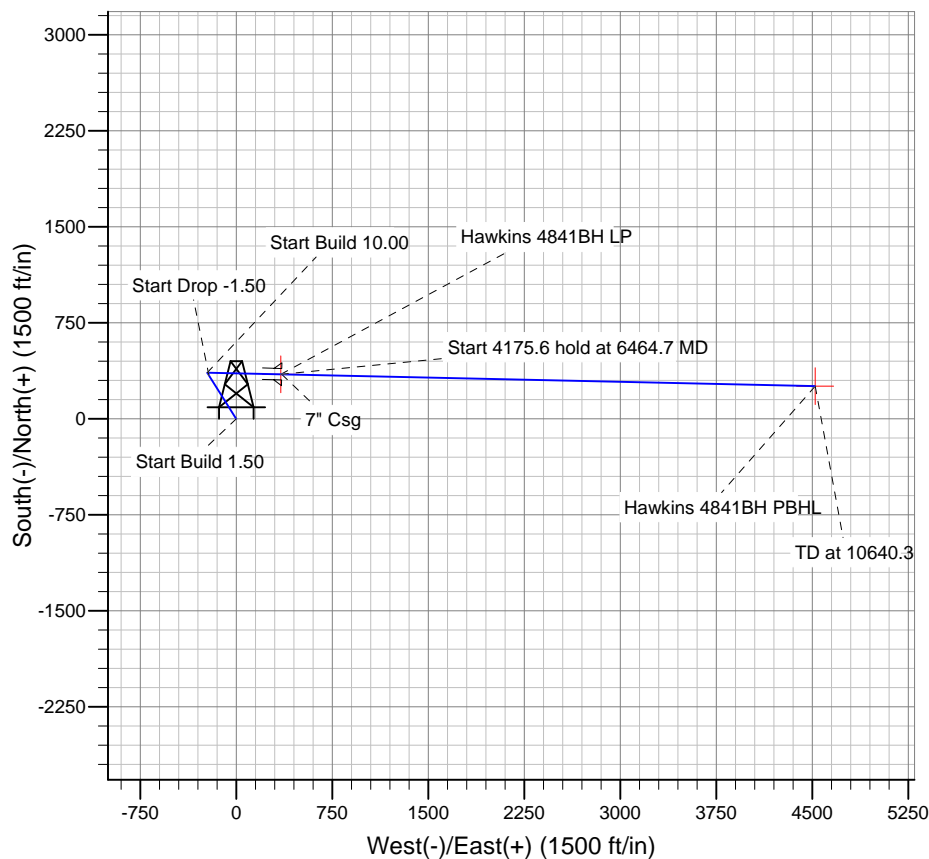
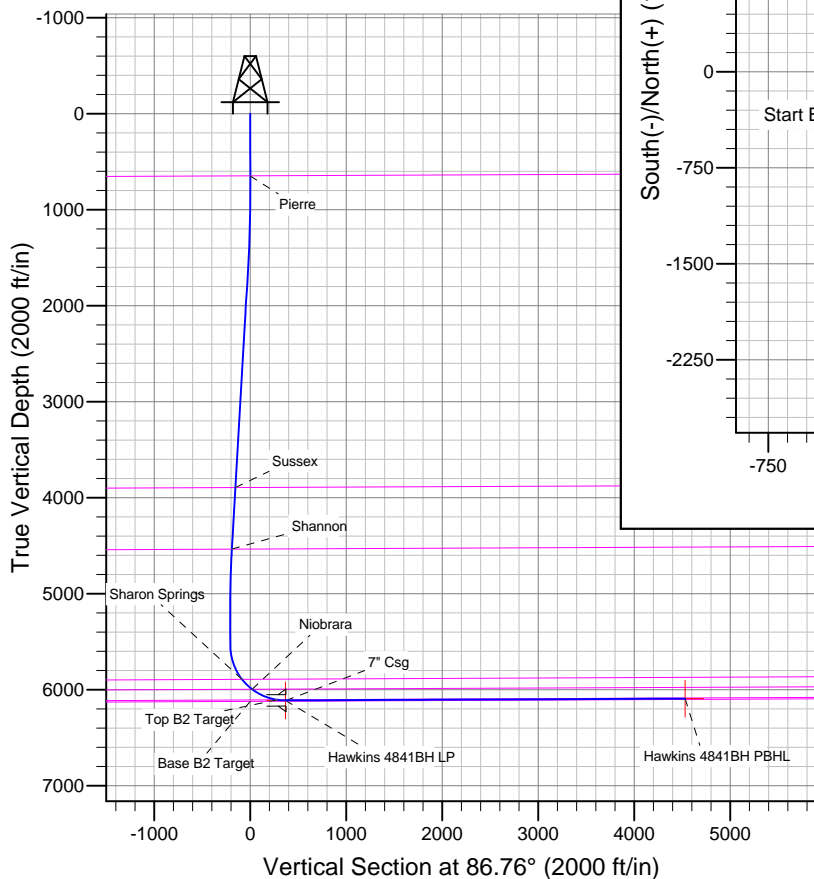
TVDPath	MDPath	Formation
647.0	647.0	Base B2 Target
3893.8	3912.0	Pierre
4534.9	4557.7	Sussex
5891.5	5943.1	Shannon
5995.0	6091.3	Sharon Springs
6104.9	6378.7	Niobrara
		Top B2 Target

## CASING DETAILS

TVD	MD	Name	Size
6110.9	6472.0	7" Csg	7

## WELLBORE TARGET DETAILS

Name	TVD	+N/-S	+E/-W	Shape
Hawkins 4841BH PBHL	6093.0	256.2	4523.0	Point
Hawkins 4841BH LP	6111.0	348.3	348.8	Point



Azimuths to True North  
Magnetic North: 8.30°  
Magnetic Field  
Strength: 52970.2snT  
Dip Angle: 67.06°  
Date: 6/12/2013  
Model: IGRF2010

# Bill Barrett Corp

## Planning Report

<b>Database:</b>	Compass	<b>Local Co-ordinate Reference:</b>	Well Hawkins 5-61-21-4841BH
<b>Company:</b>	BILL BARRETT CORP	<b>TVD Reference:</b>	KB @ 4688.0ft (Original Well Elev)
<b>Project:</b>	WELD COUNTY, COLORADO	<b>MD Reference:</b>	KB @ 4688.0ft (Original Well Elev)
<b>Site:</b>	Hawkins 5-61-21 Pad	<b>North Reference:</b>	True
<b>Well:</b>	Hawkins 5-61-21-4841BH	<b>Survey Calculation Method:</b>	Minimum Curvature
<b>Wellbore:</b>	Wellbore #1		
<b>Design:</b>	Design #1		

<b>Project</b>	WELD COUNTY, COLORADO		
<b>Map System:</b>	US State Plane 1983	<b>System Datum:</b>	Mean Sea Level
<b>Geo Datum:</b>	North American Datum 1983		
<b>Map Zone:</b>	Colorado Northern Zone		

Site		Hawkins 5-61-21 Pad			
Site Position:		Northing:	1,384,873.79ft	Latitude:	40° 22' 58.238 N
From:	Lat/Long	Easting:	3,355,857.44ft	Longitude:	104° 13' 21.223 W
Position Uncertainty:	0.0 ft	Slot Radius:	"	Grid Convergence:	0.83 °

Well	Hawkins 5-61-21-4841BH					
Well Position	+N-S	40.1 ft	Northing:	1,384,913.86 ft	Latitude:	40° 22' 58.634 N
	+E-W	0.6 ft	Easting:	3,355,857.42 ft	Longitude:	104° 13' 21.216 W
Position Uncertainty		0.0 ft	Wellhead Elevation:	ft	Ground Level:	4,665.0 ft

<b>Wellbore</b>	Wellbore #1				
<b>Magnetics</b>	<b>Model Name</b>	<b>Sample Date</b>	<b>Declination (°)</b>	<b>Dip Angle (°)</b>	<b>Field Strength (nT)</b>
	IGRF2010	6/12/2013	8.30	67.06	52,970

<b>Design</b>	Design #1				
<b>Audit Notes:</b>					
<b>Version:</b>	<b>Phase:</b>	PLAN	<b>Tie On Depth:</b>	0.0	
<b>Vertical Section:</b>	<b>Depth From (TVD) (ft)</b>	<b>+N/-S (ft)</b>	<b>+E/-W (ft)</b>	<b>Direction (°)</b>	
	0.0	0.0	0.0	86.76	

<b>Plan Sections</b>										
Measured Depth (ft)	Inclination (°)	Azimuth (°)	Vertical Depth (ft)	+N/-S (ft)	+E/-W (ft)	Dogleg Rate (°/100ft)	Build Rate (°/100ft)	Turn Rate (°/100ft)	TFO (°)	Target
0.0	0.00	0.00	0.0	0.0	0.0	0.00	0.00	0.00	0.00	
1,000.0	0.00	0.00	1,000.0	0.0	0.0	0.00	0.00	0.00	0.00	
1,452.1	6.78	327.86	1,451.0	22.6	-14.2	1.50	1.50	0.00	327.86	
4,610.1	6.78	327.86	4,587.0	338.4	-212.6	0.00	0.00	0.00	0.00	
5,062.2	0.00	0.00	5,038.0	361.0	-226.8	1.50	-1.50	0.00	180.00	
5,562.2	0.00	0.00	5,538.0	361.0	-226.8	0.00	0.00	0.00	0.00	
6,464.7	90.25	91.27	6,111.0	348.3	348.5	10.00	10.00	0.00	91.27	Hawkins 4841BH LI
10,640.4	90.25	91.27	6,092.7	256.0	4,523.2	0.00	0.00	0.00	0.00	Hawkins 4841BH P

# Bill Barrett Corp

## Planning Report

<b>Database:</b>	Compass	<b>Local Co-ordinate Reference:</b>	Well Hawkins 5-61-21-4841BH
<b>Company:</b>	BILL BARRETT CORP	<b>TVD Reference:</b>	KB @ 4688.0ft (Original Well Elev)
<b>Project:</b>	WELD COUNTY, COLORADO	<b>MD Reference:</b>	KB @ 4688.0ft (Original Well Elev)
<b>Site:</b>	Hawkins 5-61-21 Pad	<b>North Reference:</b>	True
<b>Well:</b>	Hawkins 5-61-21-4841BH	<b>Survey Calculation Method:</b>	Minimum Curvature
<b>Wellbore:</b>	Wellbore #1		
<b>Design:</b>	Design #1		

Planned Survey									
Measured Depth (ft)	Inclination (°)	Azimuth (°)	Vertical Depth (ft)	+N/-S (ft)	+E/-W (ft)	Vertical Section (ft)	Dogleg Rate (°/100ft)	Build Rate (°/100ft)	Turn Rate (°/100ft)
0.0	0.00	0.00	0.0	0.0	0.0	0.0	0.00	0.00	0.00
100.0	0.00	0.00	100.0	0.0	0.0	0.0	0.00	0.00	0.00
200.0	0.00	0.00	200.0	0.0	0.0	0.0	0.00	0.00	0.00
300.0	0.00	0.00	300.0	0.0	0.0	0.0	0.00	0.00	0.00
400.0	0.00	0.00	400.0	0.0	0.0	0.0	0.00	0.00	0.00
500.0	0.00	0.00	500.0	0.0	0.0	0.0	0.00	0.00	0.00
600.0	0.00	0.00	600.0	0.0	0.0	0.0	0.00	0.00	0.00
647.0	0.00	0.00	647.0	0.0	0.0	0.0	0.00	0.00	0.00
<b>Pierre</b>									
700.0	0.00	0.00	700.0	0.0	0.0	0.0	0.00	0.00	0.00
800.0	0.00	0.00	800.0	0.0	0.0	0.0	0.00	0.00	0.00
900.0	0.00	0.00	900.0	0.0	0.0	0.0	0.00	0.00	0.00
1,000.0	0.00	0.00	1,000.0	0.0	0.0	0.0	0.00	0.00	0.00
1,100.0	1.50	327.86	1,100.0	1.1	-0.7	-0.6	1.50	1.50	0.00
1,200.0	3.00	327.86	1,199.9	4.4	-2.8	-2.5	1.50	1.50	0.00
1,300.0	4.50	327.86	1,299.7	10.0	-6.3	-5.7	1.50	1.50	0.00
1,400.0	6.00	327.86	1,399.3	17.7	-11.1	-10.1	1.50	1.50	0.00
1,452.1	6.78	327.86	1,451.0	22.6	-14.2	-12.9	1.50	1.50	0.00
1,500.0	6.78	327.86	1,498.6	27.4	-17.2	-15.6	0.00	0.00	0.00
1,600.0	6.78	327.86	1,597.9	37.4	-23.5	-21.4	0.00	0.00	0.00
1,700.0	6.78	327.86	1,697.2	47.4	-29.8	-27.1	0.00	0.00	0.00
1,800.0	6.78	327.86	1,796.5	57.4	-36.1	-32.8	0.00	0.00	0.00
1,900.0	6.78	327.86	1,895.8	67.4	-42.4	-38.5	0.00	0.00	0.00
2,000.0	6.78	327.86	1,995.1	77.4	-48.6	-44.2	0.00	0.00	0.00
2,100.0	6.78	327.86	2,094.4	87.4	-54.9	-49.9	0.00	0.00	0.00
2,200.0	6.78	327.86	2,193.7	97.4	-61.2	-55.6	0.00	0.00	0.00
2,300.0	6.78	327.86	2,293.0	107.4	-67.5	-61.3	0.00	0.00	0.00
2,400.0	6.78	327.86	2,392.3	117.4	-73.8	-67.0	0.00	0.00	0.00
2,500.0	6.78	327.86	2,491.6	127.4	-80.0	-72.7	0.00	0.00	0.00
2,600.0	6.78	327.86	2,590.9	137.4	-86.3	-78.4	0.00	0.00	0.00
2,700.0	6.78	327.86	2,690.2	147.4	-92.6	-84.1	0.00	0.00	0.00
2,800.0	6.78	327.86	2,789.5	157.4	-98.9	-89.8	0.00	0.00	0.00
2,900.0	6.78	327.86	2,888.8	167.4	-105.2	-95.5	0.00	0.00	0.00
3,000.0	6.78	327.86	2,988.1	177.4	-111.5	-101.3	0.00	0.00	0.00
3,100.0	6.78	327.86	3,087.4	187.4	-117.7	-107.0	0.00	0.00	0.00
3,200.0	6.78	327.86	3,186.7	197.4	-124.0	-112.7	0.00	0.00	0.00
3,300.0	6.78	327.86	3,286.0	207.4	-130.3	-118.4	0.00	0.00	0.00
3,400.0	6.78	327.86	3,385.3	217.4	-136.6	-124.1	0.00	0.00	0.00
3,500.0	6.78	327.86	3,484.6	227.4	-142.9	-129.8	0.00	0.00	0.00
3,600.0	6.78	327.86	3,583.9	237.4	-149.2	-135.5	0.00	0.00	0.00
3,700.0	6.78	327.86	3,683.2	247.4	-155.4	-141.2	0.00	0.00	0.00
3,800.0	6.78	327.86	3,782.5	257.4	-161.7	-146.9	0.00	0.00	0.00
3,900.0	6.78	327.86	3,881.8	267.4	-168.0	-152.6	0.00	0.00	0.00
3,912.0	6.78	327.86	3,893.8	268.6	-168.8	-153.3	0.00	0.00	0.00
<b>Sussex</b>									
4,000.0	6.78	327.86	3,981.1	277.4	-174.3	-158.3	0.00	0.00	0.00
4,100.0	6.78	327.86	4,080.4	287.4	-180.6	-164.0	0.00	0.00	0.00
4,200.0	6.78	327.86	4,179.7	297.4	-186.8	-169.7	0.00	0.00	0.00
4,300.0	6.78	327.86	4,279.0	307.4	-193.1	-175.4	0.00	0.00	0.00
4,400.0	6.78	327.86	4,378.3	317.4	-199.4	-181.2	0.00	0.00	0.00
4,500.0	6.78	327.86	4,477.6	327.4	-205.7	-186.9	0.00	0.00	0.00
4,557.7	6.78	327.86	4,534.9	333.1	-209.3	-190.2	0.00	0.00	0.00
<b>Shannon</b>									

# Bill Barrett Corp

## Planning Report

<b>Database:</b>	Compass	<b>Local Co-ordinate Reference:</b>	Well Hawkins 5-61-21-4841BH
<b>Company:</b>	BILL BARRETT CORP	<b>TVD Reference:</b>	KB @ 4688.0ft (Original Well Elev)
<b>Project:</b>	WELD COUNTY, COLORADO	<b>MD Reference:</b>	KB @ 4688.0ft (Original Well Elev)
<b>Site:</b>	Hawkins 5-61-21 Pad	<b>North Reference:</b>	True
<b>Well:</b>	Hawkins 5-61-21-4841BH	<b>Survey Calculation Method:</b>	Minimum Curvature
<b>Wellbore:</b>	Wellbore #1		
<b>Design:</b>	Design #1		

Planned Survey									
Measured Depth (ft)	Inclination (°)	Azimuth (°)	Vertical Depth (ft)	+N/-S (ft)	+E/-W (ft)	Vertical Section (ft)	Dogleg Rate (°/100ft)	Build Rate (°/100ft)	Turn Rate (°/100ft)
4,600.0	6.78	327.86	4,576.9	337.4	-212.0	-192.6	0.00	0.00	0.00
4,610.1	6.78	327.86	4,587.0	338.4	-212.6	-193.1	0.00	0.00	0.00
4,700.0	5.43	327.86	4,676.3	346.5	-217.7	-197.8	1.50	-1.50	0.00
4,800.0	3.93	327.86	4,776.0	353.4	-222.0	-201.7	1.50	-1.50	0.00
4,900.0	2.43	327.86	4,875.8	358.1	-225.0	-204.4	1.50	-1.50	0.00
5,000.0	0.93	327.86	4,975.8	360.6	-226.6	-205.8	1.50	-1.50	0.00
5,062.2	0.00	0.00	5,038.0	361.0	-226.8	-206.1	1.50	-1.50	0.00
5,100.0	0.00	0.00	5,075.8	361.0	-226.8	-206.1	0.00	0.00	0.00
5,200.0	0.00	0.00	5,175.8	361.0	-226.8	-206.1	0.00	0.00	0.00
5,300.0	0.00	0.00	5,275.8	361.0	-226.8	-206.1	0.00	0.00	0.00
5,400.0	0.00	0.00	5,375.8	361.0	-226.8	-206.1	0.00	0.00	0.00
5,500.0	0.00	0.00	5,475.8	361.0	-226.8	-206.1	0.00	0.00	0.00
5,562.2	0.00	0.00	5,538.0	361.0	-226.8	-206.1	0.00	0.00	0.00
5,600.0	3.78	91.27	5,575.8	361.0	-225.6	-204.8	10.00	10.00	0.00
5,700.0	13.78	91.27	5,674.5	360.6	-210.3	-189.6	10.00	10.00	0.00
5,800.0	23.78	91.27	5,769.0	359.9	-178.2	-157.6	10.00	10.00	0.00
5,900.0	33.78	91.27	5,856.6	358.9	-130.1	-109.6	10.00	10.00	0.00
5,943.1	38.09	91.27	5,891.5	358.3	-104.8	-84.4	10.00	10.00	0.00
<b>Sharon Springs</b>									
6,000.0	43.78	91.27	5,934.4	357.5	-67.6	-47.3	10.00	10.00	0.00
6,091.3	52.91	91.27	5,995.0	356.0	0.5	20.6	10.00	10.00	0.00
<b>Niobrara</b>									
6,100.0	53.78	91.27	6,000.2	355.8	7.5	27.6	10.00	10.00	0.00
6,200.0	63.78	91.27	6,052.0	353.9	92.9	112.8	10.00	10.00	0.00
6,300.0	73.78	91.27	6,088.2	351.9	186.0	205.6	10.00	10.00	0.00
6,378.7	81.65	91.27	6,104.9	350.2	262.8	282.2	10.00	10.00	0.00
<b>Top B2 Target</b>									
6,400.0	83.78	91.27	6,107.6	349.7	283.9	303.2	10.00	10.00	0.00
6,464.7	90.25	91.27	6,111.0	348.3	348.5	367.6	10.00	10.00	0.00
6,465.0	90.25	91.27	6,111.0	348.3	348.8	367.9	0.00	0.00	0.00
<b>Hawkins 4841BH LP</b>									
6,472.0	90.25	91.27	6,110.9	348.1	355.8	374.9	0.00	0.00	0.00
<b>7" Csg</b>									
6,500.0	90.25	91.27	6,110.8	347.5	383.8	402.8	0.00	0.00	0.00
6,600.0	90.25	91.27	6,110.4	345.3	483.8	502.5	0.00	0.00	0.00
6,700.0	90.25	91.27	6,109.9	343.1	583.7	602.2	0.00	0.00	0.00
6,800.0	90.25	91.27	6,109.5	340.9	683.7	701.9	0.00	0.00	0.00
6,900.0	90.25	91.27	6,109.1	338.7	783.7	801.6	0.00	0.00	0.00
7,000.0	90.25	91.27	6,108.6	336.5	883.7	901.3	0.00	0.00	0.00
7,100.0	90.25	91.27	6,108.2	334.2	983.6	1,000.9	0.00	0.00	0.00
7,200.0	90.25	91.27	6,107.7	332.0	1,083.6	1,100.6	0.00	0.00	0.00
7,300.0	90.25	91.27	6,107.3	329.8	1,183.6	1,200.3	0.00	0.00	0.00
7,400.0	90.25	91.27	6,106.9	327.6	1,283.6	1,300.0	0.00	0.00	0.00
7,500.0	90.25	91.27	6,106.4	325.4	1,383.5	1,399.7	0.00	0.00	0.00
7,600.0	90.25	91.27	6,106.0	323.2	1,483.5	1,499.4	0.00	0.00	0.00
7,700.0	90.25	91.27	6,105.6	321.0	1,583.5	1,599.1	0.00	0.00	0.00
7,800.0	90.25	91.27	6,105.1	318.8	1,683.5	1,698.8	0.00	0.00	0.00
7,900.0	90.25	91.27	6,104.7	316.6	1,783.4	1,798.5	0.00	0.00	0.00
8,000.0	90.25	91.27	6,104.3	314.3	1,883.4	1,898.2	0.00	0.00	0.00
8,100.0	90.25	91.27	6,103.8	312.1	1,983.4	1,997.8	0.00	0.00	0.00
8,200.0	90.25	91.27	6,103.4	309.9	2,083.3	2,097.5	0.00	0.00	0.00
8,300.0	90.25	91.27	6,102.9	307.7	2,183.3	2,197.2	0.00	0.00	0.00
8,400.0	90.25	91.27	6,102.5	305.5	2,283.3	2,296.9	0.00	0.00	0.00
8,500.0	90.25	91.27	6,102.1	303.3	2,383.3	2,396.6	0.00	0.00	0.00

# Bill Barrett Corp

## Planning Report

<b>Database:</b>	Compass	<b>Local Co-ordinate Reference:</b>	Well Hawkins 5-61-21-4841BH
<b>Company:</b>	BILL BARRETT CORP	<b>TVD Reference:</b>	KB @ 4688.0ft (Original Well Elev)
<b>Project:</b>	WELD COUNTY, COLORADO	<b>MD Reference:</b>	KB @ 4688.0ft (Original Well Elev)
<b>Site:</b>	Hawkins 5-61-21 Pad	<b>North Reference:</b>	True
<b>Well:</b>	Hawkins 5-61-21-4841BH	<b>Survey Calculation Method:</b>	Minimum Curvature
<b>Wellbore:</b>	Wellbore #1		
<b>Design:</b>	Design #1		

Planned Survey										
Measured Depth (ft)	Inclination (°)	Azimuth (°)	Vertical Depth (ft)	+N/-S (ft)	+E/-W (ft)	Vertical Section (ft)	Dogleg Rate (°/100ft)	Build Rate (°/100ft)	Turn Rate (°/100ft)	
8,600.0	90.25	91.27	6,101.6	301.1	2,483.2	2,496.3	0.00	0.00	0.00	
8,700.0	90.25	91.27	6,101.2	298.9	2,583.2	2,596.0	0.00	0.00	0.00	
8,800.0	90.25	91.27	6,100.8	296.7	2,683.2	2,695.7	0.00	0.00	0.00	
8,900.0	90.25	91.27	6,100.3	294.5	2,783.2	2,795.4	0.00	0.00	0.00	
9,000.0	90.25	91.27	6,099.9	292.2	2,883.1	2,895.1	0.00	0.00	0.00	
9,100.0	90.25	91.27	6,099.5	290.0	2,983.1	2,994.7	0.00	0.00	0.00	
9,200.0	90.25	91.27	6,099.0	287.8	3,083.1	3,094.4	0.00	0.00	0.00	
9,300.0	90.25	91.27	6,098.6	285.6	3,183.1	3,194.1	0.00	0.00	0.00	
9,400.0	90.25	91.27	6,098.1	283.4	3,283.0	3,293.8	0.00	0.00	0.00	
9,500.0	90.25	91.27	6,097.7	281.2	3,383.0	3,393.5	0.00	0.00	0.00	
9,600.0	90.25	91.27	6,097.3	279.0	3,483.0	3,493.2	0.00	0.00	0.00	
9,700.0	90.25	91.27	6,096.8	276.8	3,583.0	3,592.9	0.00	0.00	0.00	
9,800.0	90.25	91.27	6,096.4	274.6	3,682.9	3,692.6	0.00	0.00	0.00	
9,900.0	90.25	91.27	6,096.0	272.3	3,782.9	3,792.3	0.00	0.00	0.00	
10,000.0	90.25	91.27	6,095.5	270.1	3,882.9	3,892.0	0.00	0.00	0.00	
10,100.0	90.25	91.27	6,095.1	267.9	3,982.9	3,991.6	0.00	0.00	0.00	
10,200.0	90.25	91.27	6,094.7	265.7	4,082.8	4,091.3	0.00	0.00	0.00	
10,300.0	90.25	91.27	6,094.2	263.5	4,182.8	4,191.0	0.00	0.00	0.00	
10,400.0	90.25	91.27	6,093.8	261.3	4,282.8	4,290.7	0.00	0.00	0.00	
10,500.0	90.25	91.27	6,093.3	259.1	4,382.8	4,390.4	0.00	0.00	0.00	
10,600.0	90.25	91.27	6,092.9	256.9	4,482.7	4,490.1	0.00	0.00	0.00	
10,640.3	90.25	91.27	6,092.7	256.0	4,523.0	4,530.2	0.00	0.00	0.00	
<b>Hawkins 4841BH PBHL</b>										
10,640.4	90.25	91.27	6,092.7	256.0	4,523.2	4,530.4	0.00	0.00	0.00	

Casing Points					
Measured Depth (ft)	Vertical Depth (ft)	Name	Casing Diameter (")	Hole Diameter (")	
6,472.0	6,110.9	7" Csg	7	8-3/4	

Formations						
Measured Depth (ft)	Vertical Depth (ft)	Name	Lithology	Dip (°)	Dip Direction (°)	
647.0	647.0	Pierre		-0.25	91.27	
3,912.0	3,893.0	Sussex		-0.25	91.27	
4,557.7	4,534.0	Shannon		-0.25	91.27	
5,943.1	5,891.0	Sharon Springs		-0.25	91.27	
6,091.3	5,995.0	Niobrara		-0.25	91.27	
6,378.7	6,106.0	Top B2 Target		-0.25	91.27	
	6,121.0	Base B2 Target		-0.25	91.27	