

SECTION BREAKDOWN T4S, R64W, 6th P.M.

1997 Priv. Alum. Cap,
Flush W/Ground
Lat: 39.665903°
Long: 104.509458°

ConocoPhillips Company

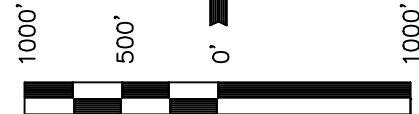
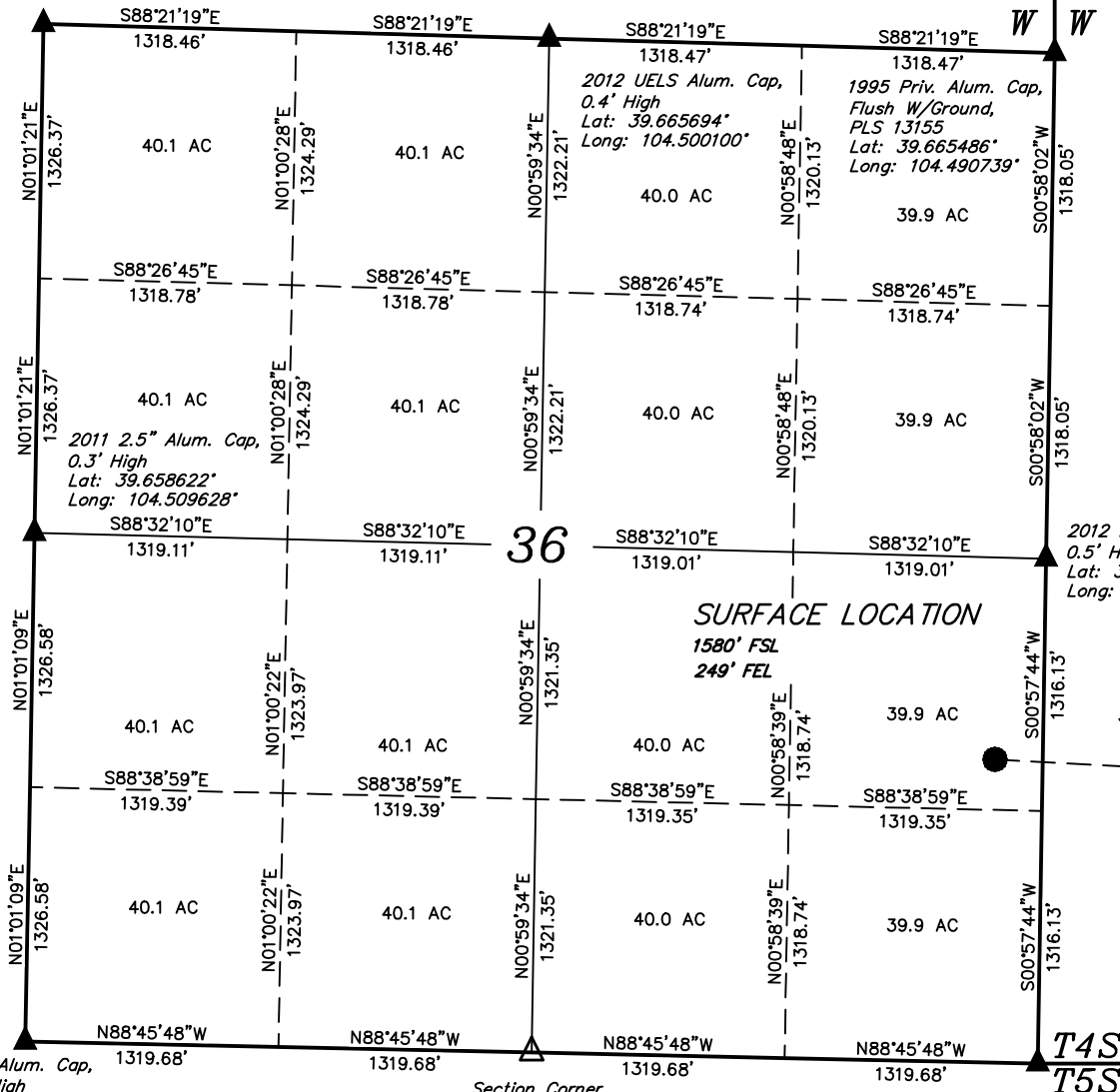
Well location, MURPHY FAMILY #4-63-31-2H,
located as shown in the NE 1/4 SE 1/4 of
Section 36, T4S, R64W, 6th P.M., Arapahoe
County, Colorado.

BASIS OF ELEVATION

BENCHMARK 374 LOCATED ON THE SECTION LINE BETWEEN
SECTIONS 12 & 13, T5S, R64W, 6th. P.M., TAKEN FROM 1988
PUBLISHED DATUM BY THE UNITED STATES DEPARTMENT OF
THE INTERIOR, GEOLOGICAL SURVEY AS BEING 6054.61 FEET.

BASIS OF BEARINGS

BASIS OF BEARINGS IS A G.P.S. OBSERVATION.



SCALE

CERTIFICATE

THIS IS TO CERTIFY THAT THE ABOVE PLAT WAS PREPARED FROM
FIELD NOTES OF ACTUAL SURVEYS MADE BY ME OR UNDER MY
SUPERVISION AND THAT THE SAME ARE TRUE AND CORRECT TO THE
BEST OF MY KNOWLEDGE AND BELIEF.

Paul J. Taylor
REGISTERED LAND SURVEYOR
REGISTRATION NO. 17492
STATE OF COLORADO
OF 90-30-12

2011 Alum. Cap,
0.3' High
Lat: 39.651342°
Long: 104.509794°

Section Corner
Re-Established
(Not Set on Ground)

2012 Priv. Alum. Cap,
0.5' High, PLS 28285
Lat: 39.651028°
Long: 104.491056°

LEGEND:

- └─┘ = 90° SYMBOL
- = PROPOSED WELL HEAD.
- ▲ = SECTION CORNERS LOCATED.
- △ = SECTION CORNERS RE-ESTABLISHED. (Not Set on Ground.)

PDOP = 1.3

NAD 83 (SURFACE LOCATION)

LATITUDE = 39°39'19.37" (39.655381)
LONGITUDE = 104°29'30.64" (104.491844)

NAD 27 (SURFACE LOCATION)

LATITUDE = 39°39'19.42" (39.655394)
LONGITUDE = 104°29'28.77" (104.491325)

UINTAH ENGINEERING & LAND SURVEYING
85 SOUTH 200 EAST - VERNAL, UTAH 84078
(435) 789-1017

SCALE 1" = 1000'	DATE SURVEYED: 10-11-12	DATE DRAWN: 10-17-12
PARTY D.L.S. C.C. S.R.L.	REFERENCES G.L.O. PLAT	
WEATHER COOL	FILE ConocoPhillips Company	

SECTION BREAKDOWN T4S, R63W, 6th P.M.

ConocoPhillips Company

Well location, MURPHY FAMILY #4-63-31-2H (TARGET BOTTOM HOLE), located as shown in the NE 1/4 SE 1/4 of Section 31, T4S, R63W, 6th P.M., Arapahoe County, Colorado.

BASIS OF ELEVATION

BENCHMARK 374 LOCATED ON THE SECTION LINE BETWEEN SECTIONS 12 & 13, T5S, R64W, 6th. P.M., TAKEN FROM 1988 PUBLISHED DATUM BY THE UNITED STATES DEPARTMENT OF THE INTERIOR, GEOLOGICAL SURVEY AS BEING 6054.61 FEET.

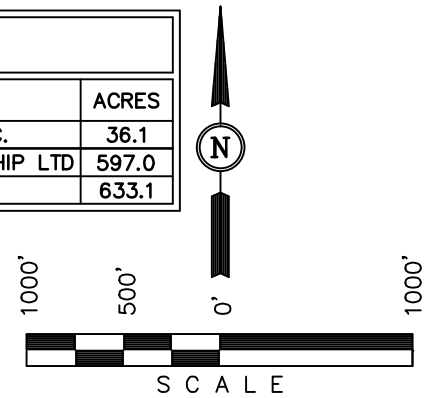
BASIS OF BEARINGS

BASIS OF BEARINGS IS A G.P.S. OBSERVATION.

ACREAGES

LEASE	OWNER	ACRES
A	METRO MORTGAGE INC.	36.1
B	MURPHY FAMILY PARTNERSHIP LTD	597.0
TOTAL GROSS ACRES		633.1

2003 Priv. Alum. Cap,
Flush W/Ground
Lat: 39.658225°
Long: 104.472300°



CERTIFICATE

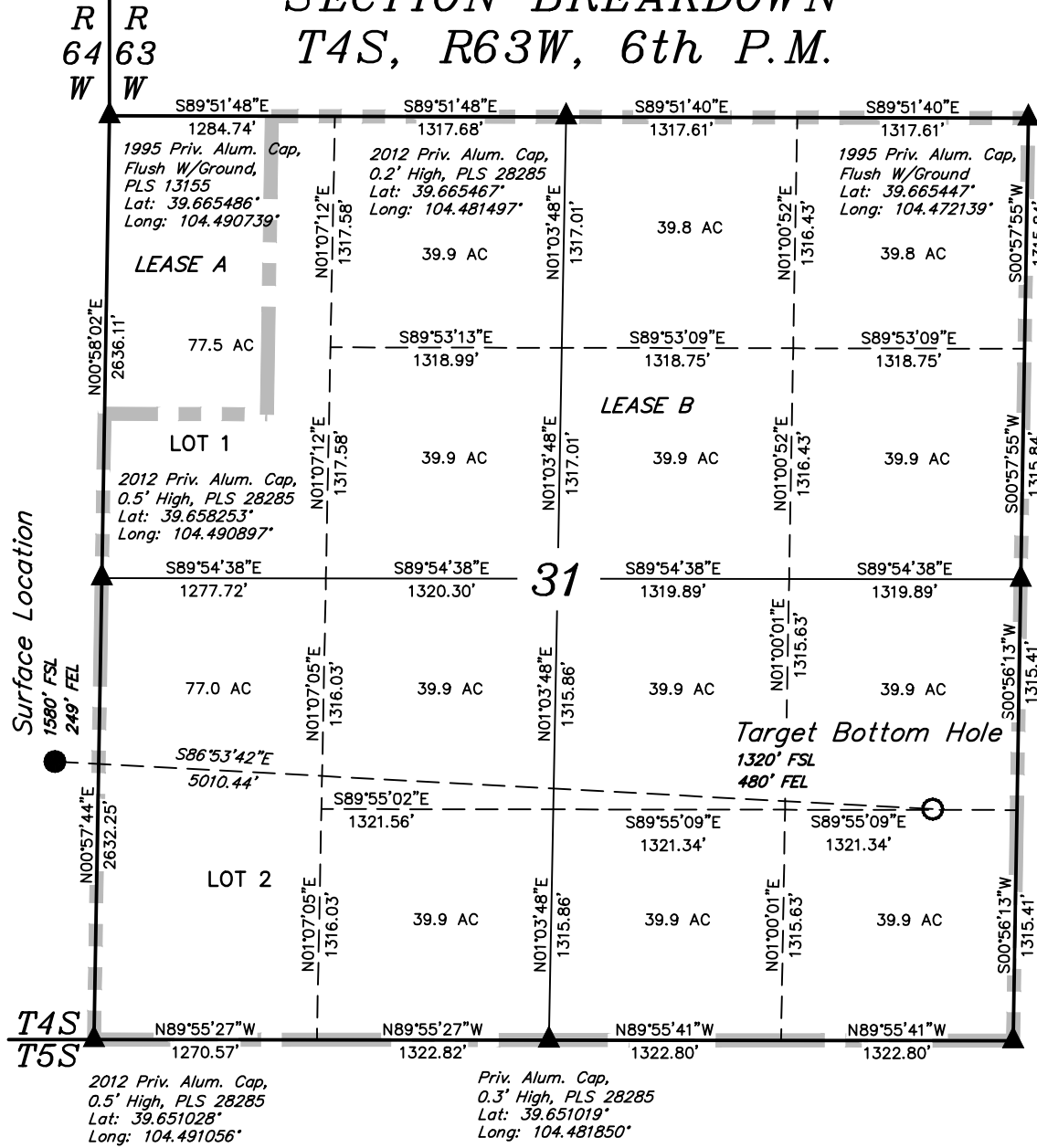
THIS IS TO CERTIFY THAT THE ABOVE PLAT WAS PREPARED FROM FIELD NOTES OF ACTUAL SURVEYS MADE BY ME OR UNDER MY SUPERVISION AND THAT THE SAME ARE TRUE AND CORRECT TO THE BEST OF MY KNOWLEDGE AND BELIEF.

REGISTERED LAND SURVEYOR
REGISTRATION NO. 17492
STATE OF COLORADO
OF 90-30-12

2003 Priv. Alum. Cap,
Flush W/Ground
Lat: 39.651008°
Long: 104.472456°

UINTAH ENGINEERING & LAND SURVEYING
85 SOUTH 200 EAST - VERNAL, UTAH 84078
(435) 789-1017

SCALE 1" = 1000'	DATE SURVEYED: 10-11-12	DATE DRAWN: 10-17-12
PARTY D.L.S. C.C. S.R.L.	REFERENCES G.L.O. PLAT	
WEATHER COOL	FILE ConocoPhillips Company	



- LEGEND:**
- └─┘ = 90° SYMBOL
 - = PROPOSED WELL HEAD.
 - ▲ = SECTION CORNERS LOCATED.

NAD 83 (TARGET BOTTOM HOLE)
LATITUDE = 39°39'16.67" (39.654631)
LONGITUDE = 104°28'26.70" (104.474083)
NAD 27 (TARGET BOTTOM HOLE)
LATITUDE = 39°39'16.72" (39.654644)
LONGITUDE = 104°28'24.83" (104.473564)