

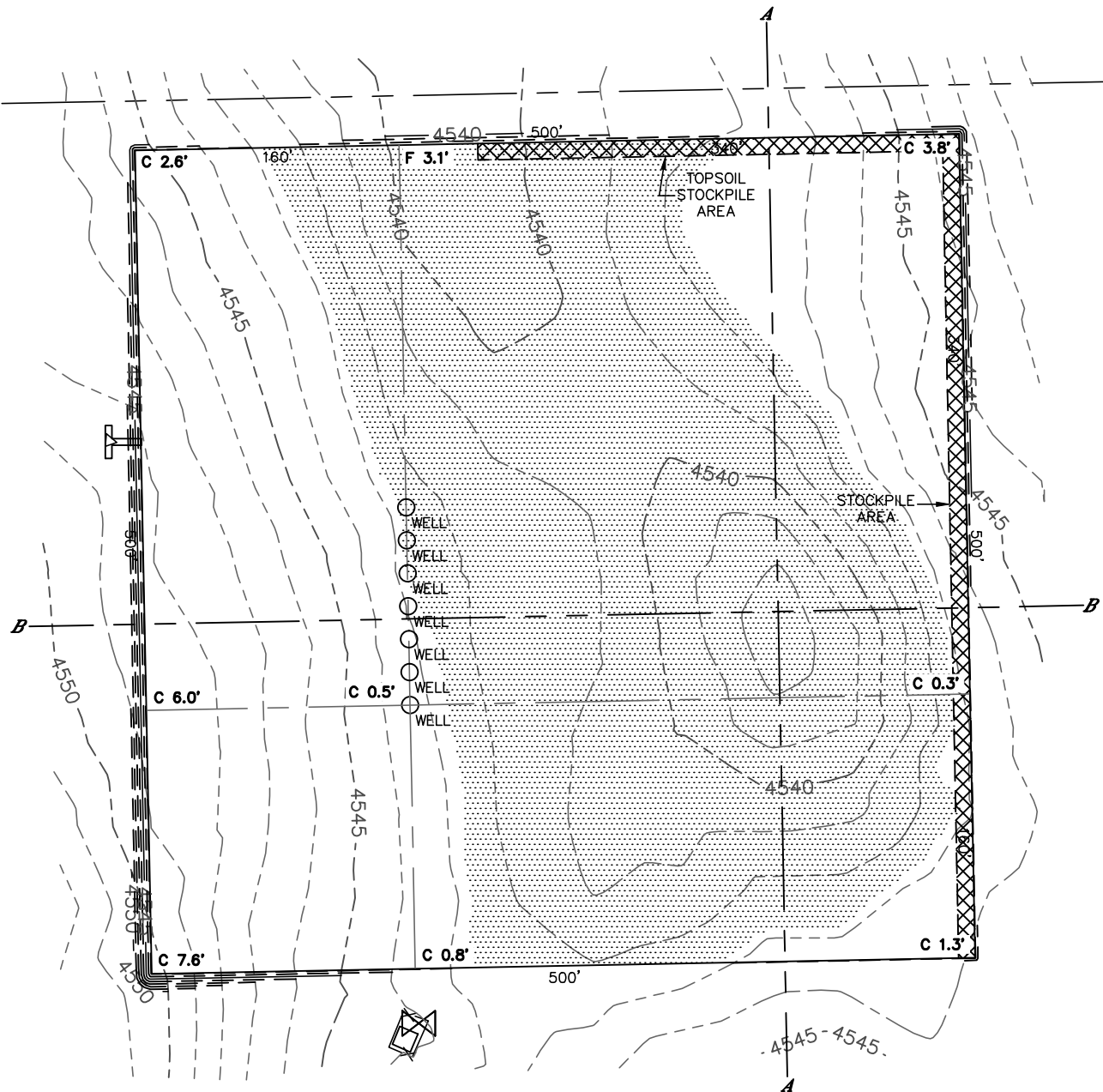


Lat40°, Inc. 1635 Foxtrail Drive, Suite 325 Loveland, CO 970-776-3321

CUT & FILL DIAGRAM

STATE NORTH PLATTE F-36 PAD

SECTION: 36
TOWNSHIP: 5N
RANGE: 63W



OPERATOR: BONANZA CREEK ENERGY, INC.

LOCATION: 370' FNL, 521' FWL

EXISTING ELEV= 4543.3'

PROPOSED ELEV= 4542.8'

DISTURBANCE= 5.9 ACRES

ESTIMATED EARTHWORK:

TOPSOIL= 9,519 CY

CUT= 10,185 CY

FILL= 10,170 CY

STOCKPILE:

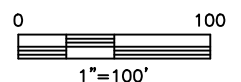
EXCESS= 15 CY

NOTE:

- 1) Ground elevations are based on an observed GPS elevation (NAVD 1988 DATUM).
- 2) No allowance has been made for soil expansion or compaction.
- 3) Proposed elevation does not account for top soil removal.
- 4) Top soil volume assumes 12" depth across entire location.
- 5) Fill slopes 2:1
- 6) Cut slopes 1.5:1

LEGEND

EX. CONTOUR	---
PRO. CONTOUR	---
FILL AREA	



DATE: 5/13/2013
PROJECT#: 2012021

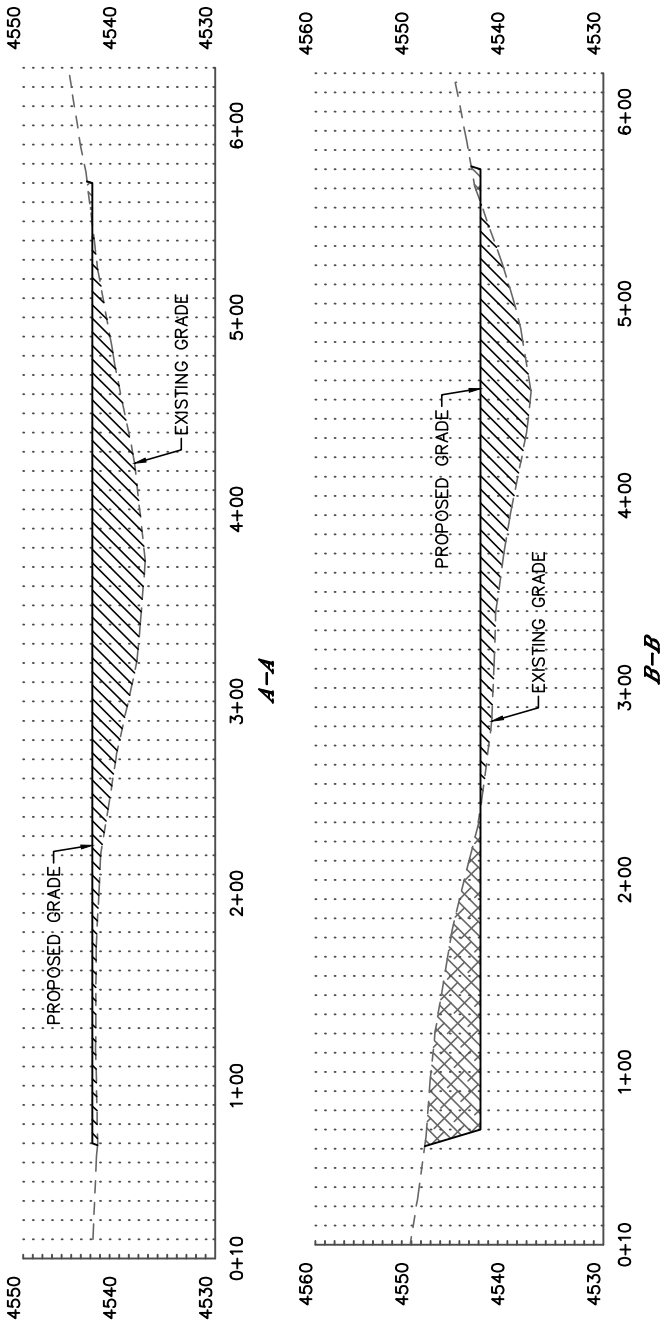


Lat40°, Inc. 1635 Foxtrail Drive, Suite 325 Loveland, CO 970-776-3321

CROSS SECTION DIAGRAM

STATE NORTH PLATTE F-36 PAD

SECTION: 36
TOWNSHIP: 5N
RANGE: 63W



HORIZONTAL SCALE: 1"=100', VERTICAL SCALE: 1"=20'