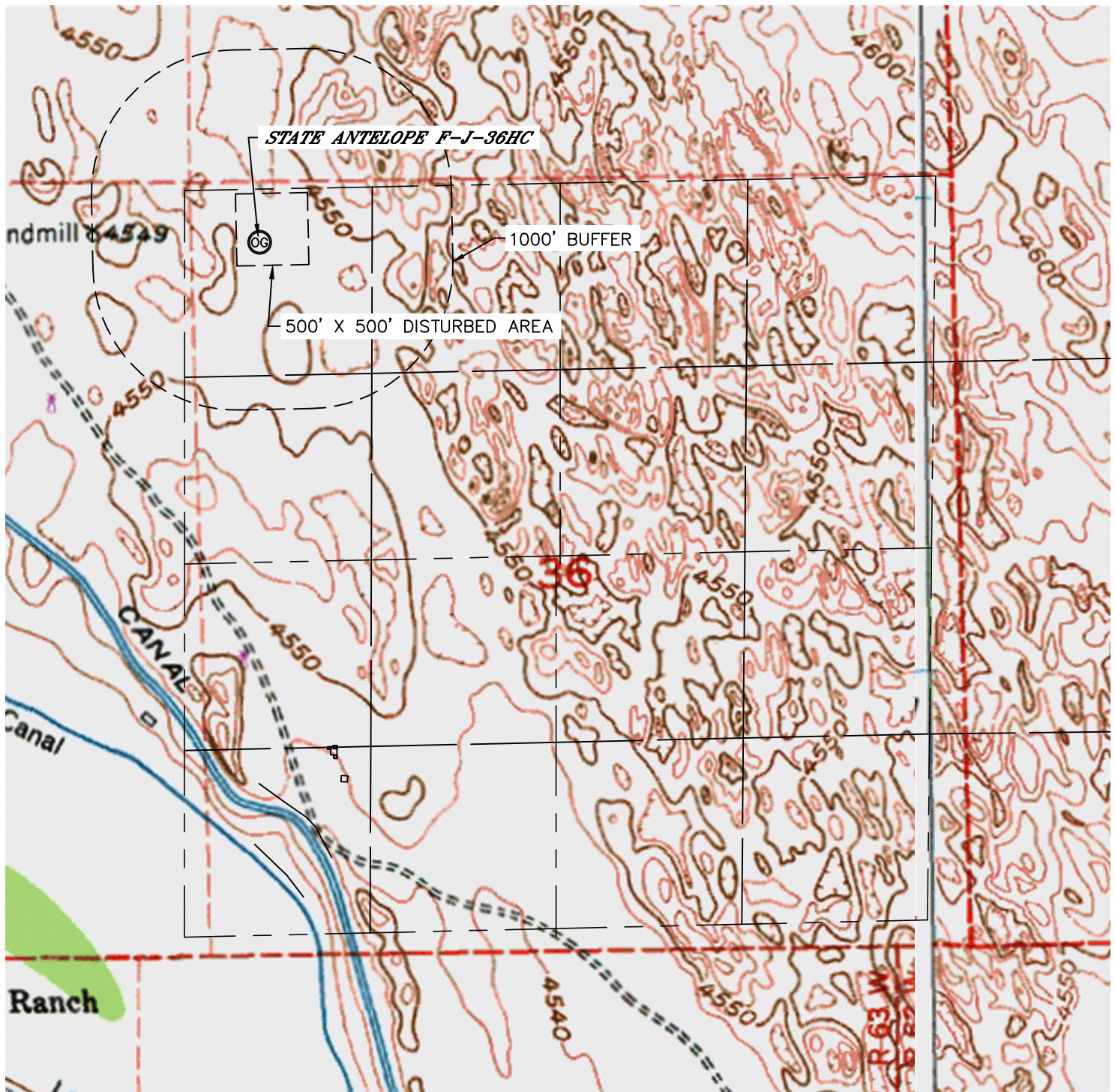


Lat40°, Inc. 1635 Foxtrail Drive, Suite 325 Loveland, CO 970-776-3321

# HYDROLOGY MAP

STATE NORTH PLATTE F-36 PAD

SECTION: 36  
TOWNSHIP: 5N  
RANGE: 63W



A horizontal number line with arrows at both ends. It is labeled '0' at the left end and '1000' at the right end. There are four vertical tick marks between 0 and 1000, dividing the segment into five equal intervals. A point is marked with a dot on the second tick mark from 0, which represents the value 250.

$$1'' = 1000'$$

DATE: 5/13/2013  
PROJECT#: 2012021

NO VISIBLE SURFACE WATER WITHIN 1000'