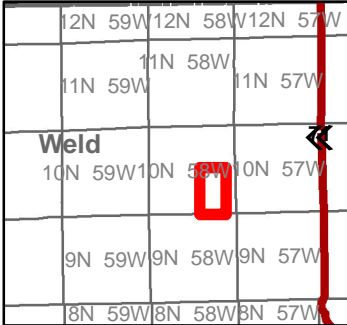


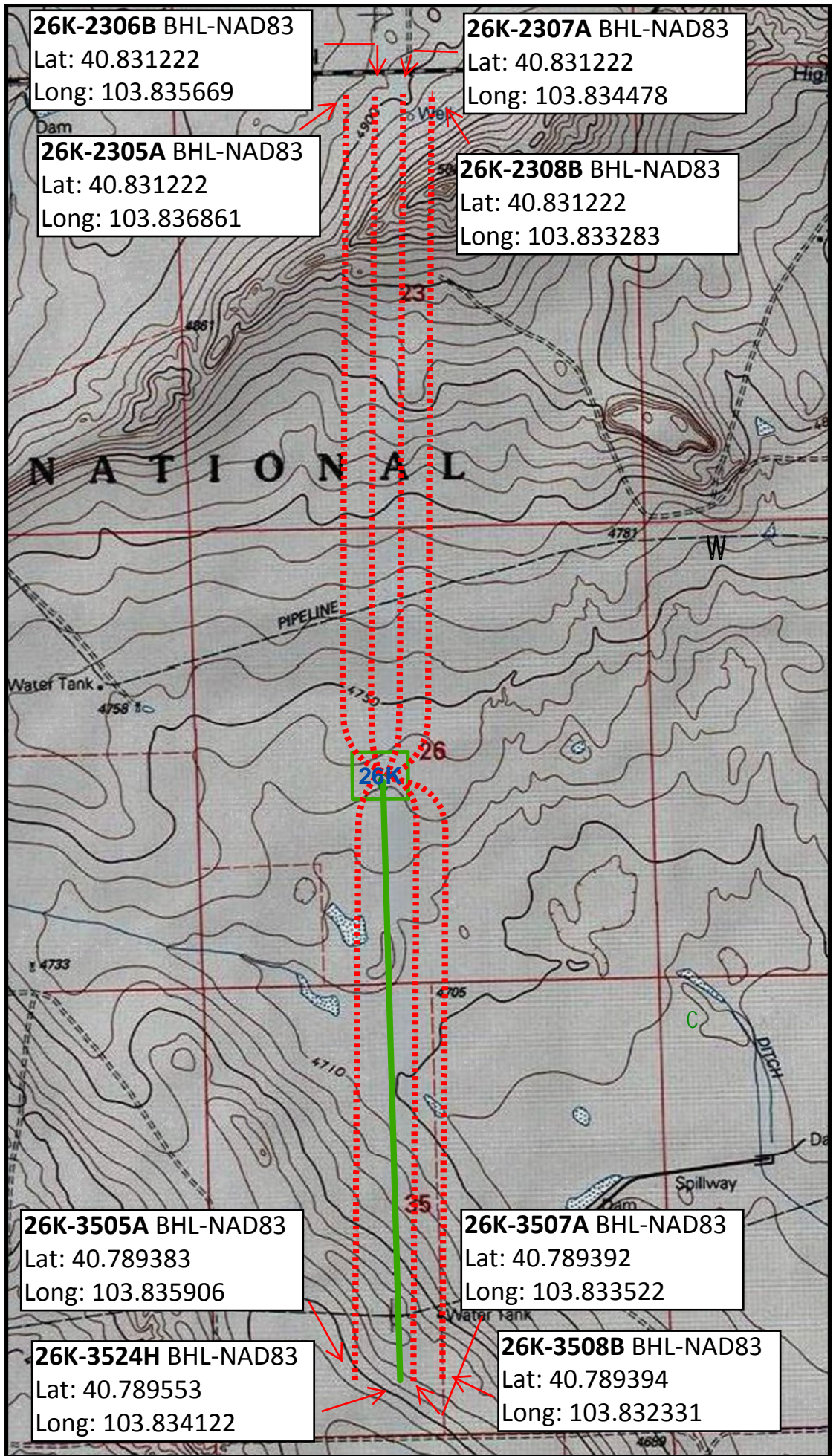
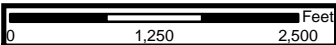
Razor 26K

Multi Well Bore Path Map
Section 26 T10N R58W
Weld County, Wyoming

Scale: 1:20,000 Date: 6/12/2013
Coordinate System: NAD 1927 UTM Zone 13N
Units: Foot US



Legend	
WELL_STATUS	
	PRODUCING
	PERMIT
Pad Planning SURVEY	
	Not Surveyed
	Surveyed
	PRODUCING GAS
	ABANDONED NO SHOWS
	ABANDONED LOCATION
	OTHER WELLS GAS SHOWS
	OTHER WELLS OIL SHOWS
	OTHER WELLS OIL & GAS SHOWS
	WELL START
	PRODUCING OIL
	PRODUCING OIL & GAS
	OTHER WELLS NO SHOWS
	INJECTION WELLS NO SHOWS
	SUSPENDED WELLS
	ABANDONED GAS
	ABANDONED OIL
	ABANDONED OIL & GAS
	LOCATION



26K-2306B BHL-NAD83
Lat: 40.831222
Long: 103.835669

26K-2307A BHL-NAD83
Lat: 40.831222
Long: 103.834478

26K-2305A BHL-NAD83
Lat: 40.831222
Long: 103.836861

26K-2308B BHL-NAD83
Lat: 40.831222
Long: 103.833283

26K-3505A BHL-NAD83
Lat: 40.789383
Long: 103.835906

26K-3507A BHL-NAD83
Lat: 40.789392
Long: 103.833522

26K-3524H BHL-NAD83
Lat: 40.789553
Long: 103.834122

26K-3508B BHL-NAD83
Lat: 40.789394
Long: 103.832331