

# WHITING OIL & GAS CORP.

## CONSTRUCTION LAYOUT FOR

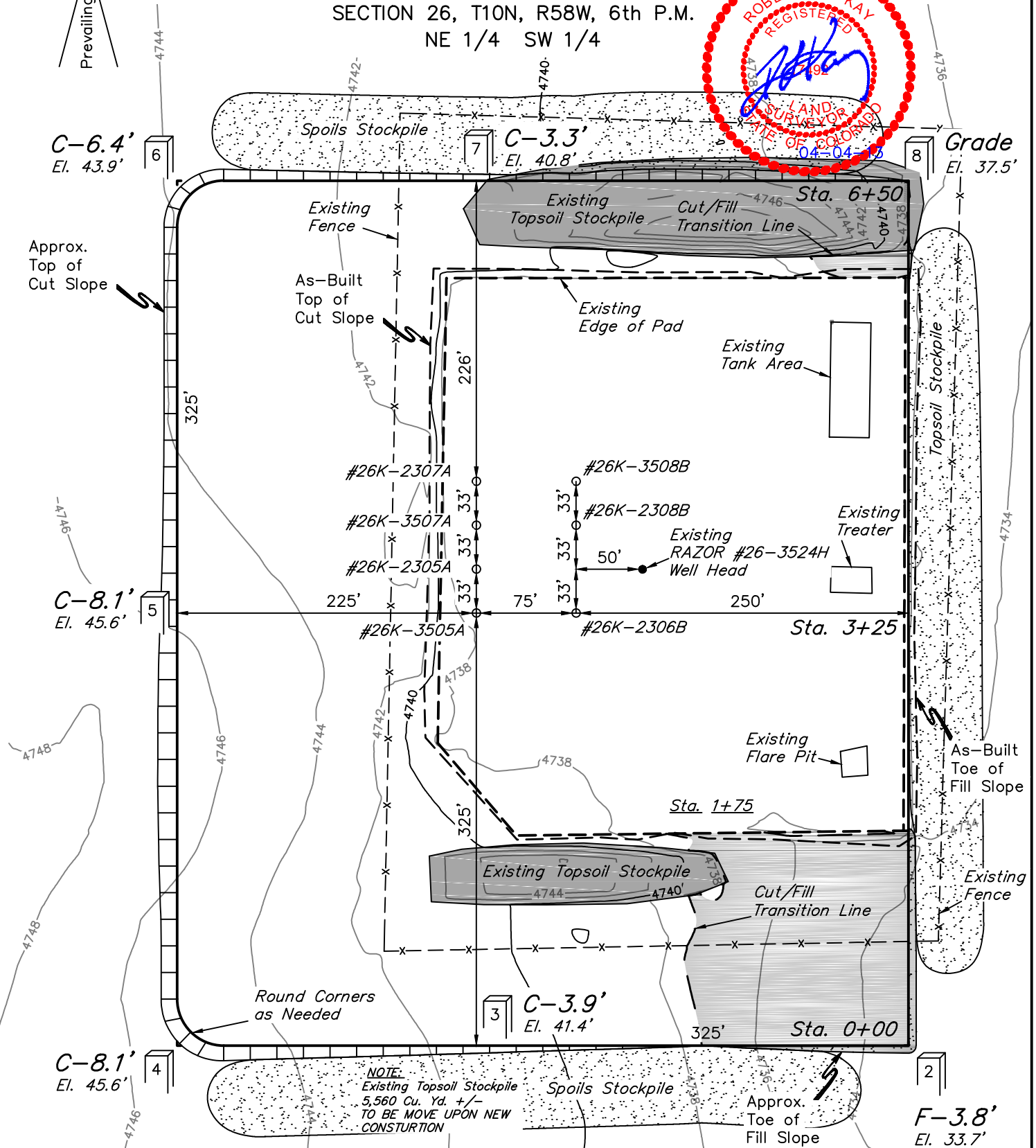
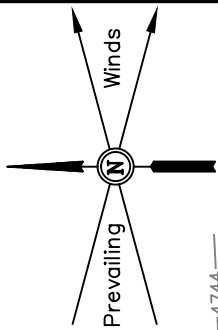
RAZOR #26K-3505A, #26K-2305A, #26K-3507A,  
#26-2307A, #26K-2306B, #26K-2308B, #26K-3508B  
ON EXISTING RAZOR #26-3524H WELL PAD  
SECTION 26, T10N, R58W, 6th P.M.  
NE 1/4 SW 1/4

FIGURE #1

SCALE: 1" = 100'

DATE: 03-25-13

DRAWN BY: Z.L.



UINTAH ENGINEERING & LAND SURVEYING

85 So. 200 East \* Vernal, Utah 84078 \* (435) 789-1017

# WHITING OIL & GAS CORP.

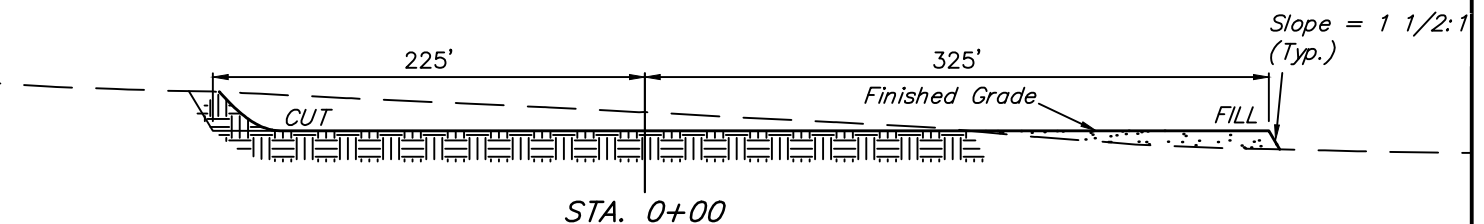
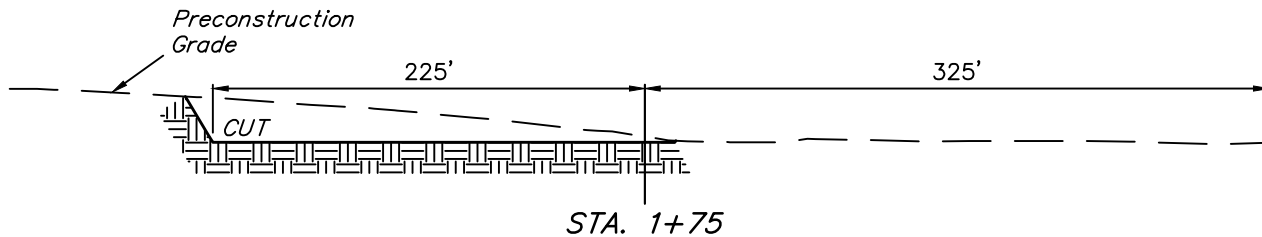
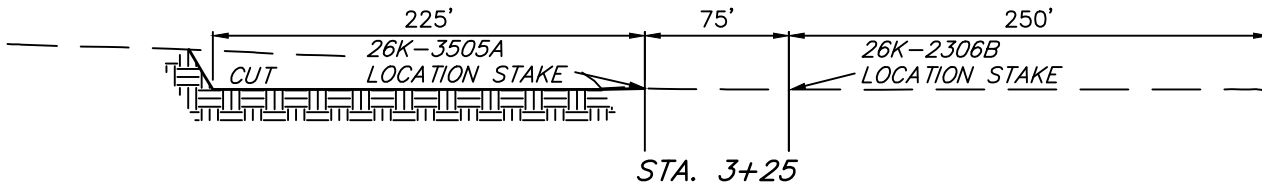
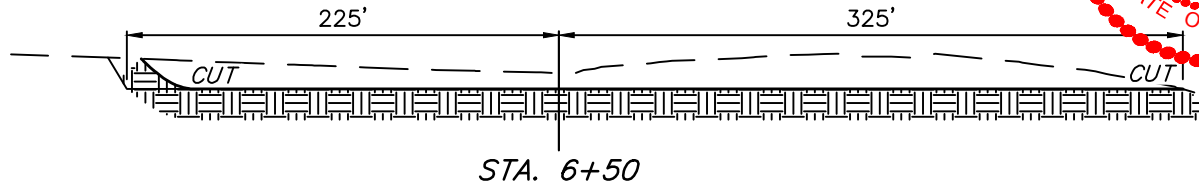
FIGURE #2

## CONSTRUCTION LAYOUT CROSS SECTIONS FOR

RAZOR #26K-3505A, #26K-2305A, #26K-3507A,  
#26-2307A, #26K-2306B, #26K-2308B, #26K-3508B  
ON EXISTING RAZOR #26-3524H WELL PAD  
SECTION 26, T10N, R58W, 6th P.M.  
NE 1/4 SW 1/4

X-Section  
Scale  
1" = 100'

DATE: 03-25-13  
DRAWN BY: Z.L.



### NOTE:

Topsoil should not be  
Stripped Below Finished  
Grade on Substructure Area.

### APPROXIMATE ACREAGES

WELL SITE DISTURBANCE = ± 10.784 ACRES

### \* NOTE:

FILL QUANTITY INCLUDES  
5% FOR COMPACTION

### APPROXIMATE YARDAGES

(6") Topsoil Stripping = 3,960 Cu. Yds.  
(New Construction Only)  
Remaining Location = 28,990 Cu. Yds.  
TOTAL CUT = 32,950 CU. YDS.  
FILL = 2,430 CU. YDS.

EXCESS MATERIAL = 30,520 Cu. Yds.  
Topsoil = 3,960 Cu. Yds.

EXCESS UNBALANCE = 26,560 Cu. Yds.  
(After Interim Rehabilitation)

UINTAH ENGINEERING & LAND SURVEYING  
85 So. 200 East \* Vernal, Utah 84078 \* (435) 789-1017

# WHITING OIL & GAS CORP.

## TYPICAL RIG LAYOUT FOR

RAZOR #26K-3505A, #26K-2305A, #26K-3507A,  
#26-2307A, #26K-2306B, #26K-2308B, #26K-3508B  
ON EXISTING RAZOR #26-3524H WELL PAD  
SECTION 26, T10N, R58W, 6th P.M.  
NE 1/4 SW 1/4

FIGURE #3

SCALE: 1" = 100'  
DATE: 03-25-13  
DRAWN BY: Z.L.

