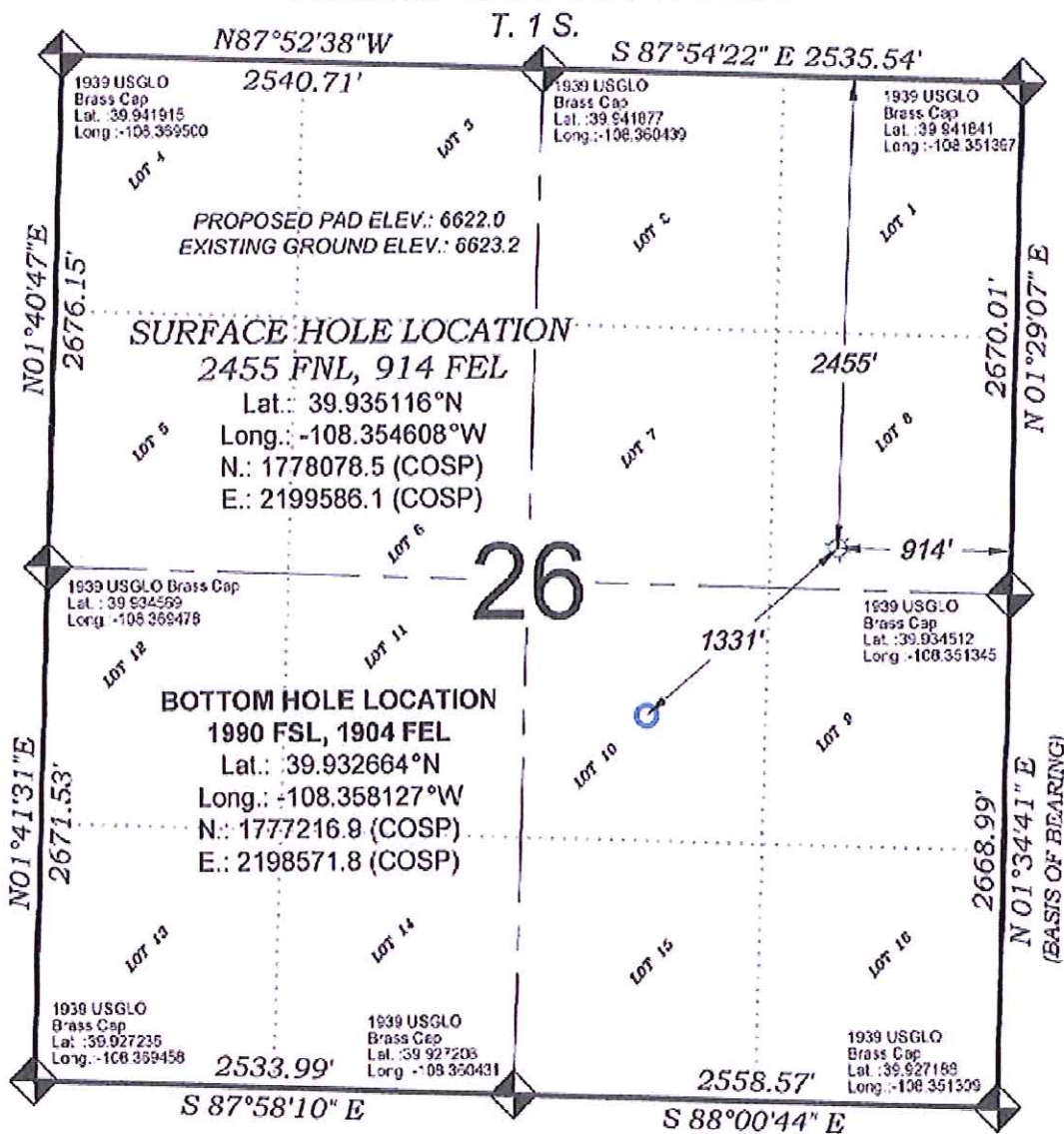


Federal RGU 333-26-198



THERE ARE NO VISIBLE
 IMPROVEMENTS WITHIN 400'
 OF THIS LOCATION

SURVEYORS STATEMENT

I, MICHAEL J. LANGHORNE, A REGISTERED LAND SURVEYOR IN THE STATE OF COLORADO DO HEREBY CERTIFY THAT THE SURVEY SHOWN HEREON WAS PREPARED UNDER MY DIRECT SUPERVISION AND HAS BEEN STAKED ON THE GROUND AS SHOWN ON THE PLAT AND CHECKING THAT THIS MAP IS A TRUE REPRESENTATION THEREOF.

MICHAEL J. LANGHORNE, COLORADO REGISTRATION NO. 36572
 FOR AND ON BEHALF OF
 BOOKCLIFF SURVEY SERVICES, INC.

REFERENCES

- 1) 1983 DEPENDENT RESURVEY and Subdivision of Certain Sections, T. 1 S., R. 98 W., 6th P.M. (GLO PLAT)
- 2) U.S.G.S. QUAD: Rock School and Square S Ranch, CO



SURVEY DATE: 2/14/13
 MAP DATE: 2/19/13
 SCALE: 1" = 1000'
 PLAT: 1 of 1
 PROJECT: Habitands

- LEGEND -

FIELD LOCATED SECTION
 MONUMENTS AS DESCRIBED



FIELD SURVEYED
 WELL LOCATION



CALCULATED BOTTOM
 HOLE LOCATION



CALCULATED SECTION
 CORNER LOCATION



NOTES

- 1) ELEVATIONS BASED ON N.A. V.D. 1988 PUBLISHED COORDINATES.
- 2) LATITUDES AND LONGITUDES ARE BASE ON NAD 83, PUBLISHED COORDINATES.
- 3) STATE PLANE COORDINATES ARE BASED ON COLORADO CENTRAL ZONE, U.S. SURVEY FEET.
- 4) ELEVATION MASK SET TO 15"
- 5) GPS OPERATOR: J. KIRKPATRICK, OBSERVED A PDOP OF 2.0 FOR SURVEY POINT NUMBER 271.
- 6) SURFACE AND BOTTOM HOLE LOCATIONS ARE MEASURED 90° FROM SECTION LINES.

WELL LOCATION PLAT Prepared for:
 WPXENERGY. WPX Energy Rocky Mountain, LLC

SE1/4 NE1/4, SECTION 26
 T. 1 S., R. 98 W. of the 6th. P.M.
 Rio BLANCO COUNTY COLORADO