



RESERVOIR PERFORMANCE MONITOR

Baker Atlas

File No: CH072152	Company Well Field County	WPX ENERGY GOLDSBOROUGH PA 412-11 PARACHUTE GARFIELD	State COLORADO
API No: 05045218270000			
11 7S 9SW PA 22-11 CYCLONE 17	Location SHL: 2413' FNL & 2052' FNL SEC:11 BHL: 2047' FNL & 657' FNL SEC:11 SEC 11 TWP 7S RGE 9SW	Other Services BOND LOG	
Permanent Datum Log Measured From Drill Measured From	E.L. _____ Elevation 6274 ft K.B. _____ 21 ft Above P. D. KELLY BUSHING		Elevations KB 6295 ft DF GL 6274 ft

Date	24/MAY/13	
Run	ONE	
Service Order	575086	
Depth Driller	7676 ft	
Depth Logger	7847 ft	
Bottom Logged Interval	7837 ft	
Top Logged Interval	4330 ft	
Time Started	7:30	
Time Finished	14:00	
Operator Rig Time	6.5 HRS	
Type of Fluid in Hole	WATER	
Fluid Density	N/A	
Salinity	N/A	
Fluid Level	67 ft	
Logged Cement Top	N/A	
Wellhead Pressure	0 psi	
Maximum Hole Deviation	N/A	
Nominal Logging Speed	10 fpm	
Maximum Recorded Temperature	224 degF	
Reference Log	BAKER HUGHES BOND LOG	
Reference Log Date	23/MAY/13	
Equipment No.	4271	GRAND JUNCTION
Recorded By	M. KINSEL	9721
Witnessed By	MR. DUSTIN WELSH	GRAND JUNCTION

- FOLD HERE

In making interpretations of logs, our employees will give the customer the benefit of their best judgement. But since all interpretations are opinions based on inferences from electrical or other measurements, we cannot, and we do not guarantee the accuracy or correctness of any interpretation. We shall not be liable or responsible for any loss, cost, damages, or expenses whatsoever incurred or sustained by the customer resulting from any interpretation made by any of our employees.

Borehole Record		
Bit Size	From	To
13.5 In	0 ft	1148 ft
8.75 In	0 ft	7971 ft

Casing Record				
Size	Weight	Grade	From	To
9.625 In	N/A	N/A	0 ft	1127 ft
4.5 In	11.6 lbm/ft	1-80	0 ft	7878 ft

Remarks
ALL DATA IN THIS LOG WAS DEPTH SHIFTED TO MATCH A BAKER HUGHES BOND LOG DATED 23 MAY 2013 AT THE CLIENT'S REQUEST. THE AMOUNT OF LINEAR SHIFT WAS 5 FEET UP. DEPTH SHIFTING PROCESS CREATES THE POTENTIAL FOR COLLAR LENGTHS TO VARY FROM OTHER CASED HOLE LOGS WITHOUT A GAMMA RAY REFERENCE. SHORT JOINT: 4488' - 4513' BHT: 224 degF

Equipment Data					
Run	Trip	Tool	Series Number	Serial Number	Position
1	1	RPM	8281FA	10401926	FREE
1	1	RPM	8281PA	10203151	FREE
1	1	RPM	8281EA	10423671	FREE
1	1	GAMMA RAY	8262XA	10076055	FREE
1	1	TEL/CCL	8248EA	10296408	FREE
1	1	PCM	8250EA	10397894	FREE

MAIN LOG
PNC 3D MODE

SPL PROCESSING					
MEASUREMENT TYPE	PARAMETER	VALUE	UNITS	TOP	BOTTOM
PNC Porosity	Borehole	Cased		4309.248	7870.750
PNC Porosity	Borehole Size	8.750	inch	4309.248	7870.750
PNC Porosity	Casing Size	4.500	inch	4309.248	7870.750
PNC Porosity	Gas Filled	Non Gas Filled		4309.248	7870.750
PNC Porosity	Matrix	Sandstone		4309.248	7870.750

DEPTH OFFSETS (for Acquired Curves)							
SERIES	DEPTH OFFSET	ACQUIRED CURVES					
8248EA	-15.320	FLTM					
8248EA	-13.320	CCL	CHV				
8262XA	-10.189	GR					
8281XA	-0.662	HVC3Q0	SEQ3	AMA3	AML3	BKX	CXS
		CPT3Q0	CPT3Q2	CPT3Q3	CPT3Q4	ET3	IXS
		MCS3	MCS3Q0	QCAL3	RGN3	RICX	SDA3
		CDL3	CDL3	CDL3	CDL3	YD	LOGEST

8281XA

-0.250

SGL3

SGA3

STA3

X5

ASPEC3

RAT023

R1CX

R1N13C

R1N23

R1N23C

SD3D

SG3D

SGB3

SGF3

WDTH3

CXSR

IXSR

XSR

R1CXR

HVC2Q0

SEQ2

AMA2

AMB2

AMF2

AML2

BKL

CHF2

CLS

CPT2Q0

CPT2Q2

CPT2Q3

CPT2Q4

ET2

ILS

LS

MCS2

MCS2Q0

QCAL2

RGN2

R1CL

RONE23

RTW023

SDA2

SDL2

SGA2

SGB2

SGF2

SGK2

SGL2

STA2

ASPEC2

ILSC

ILSN

WDTH2

R1CLC

CLSR

ILSR

LSR

R1CLR

8281XA

0.000

CPRS

HVC1Q0

MV

SEQ

SEQ1

AMA1

AMB1

AME1

AMF1

AML1

BKS

CHF1

CSS

CORB

CORF

CPT1Q0

CPT1Q2

CPT1Q2A

CPT1Q2B

CPT1Q2C

CPT1Q3

CPT1Q4

CPT1Q5

ET1

G1

G2

GE1S

GE2S

ISS

MCS1

MCS1Q0

QA1

QCAL1

QM1

RAT0

RAT013

RBOR

RGN1

R1CS

R1N

RONE

RPOR

RTW0

R1N13

RONE13

RTW013

SALB

SC1

SDA1

SDL1

SGA1

SGB1

SGBC

SGE1

SGF1

SGFC

SGK1

SGL1

SS

SS2

STA1

PD1S

PD2S

PD3S

MD1S

MD2S

MD3S

DG1S

DG2S

DG3S

PD1M

PD2M

PD3M

MD1M

MD2M

MD3M

DG1M

DG2M

DG3M

MVS

MA

MM

FILV

IAM

TA

PVM

PVS

IAS

SSTAT

QPD1

QPD2

QPD3

QMD1

QMD2

QMD3

QDG1

QDG2

QDG3

QMA

QTA

QFILV

QMV

QPV

QIA

DERR

DCNT

QPK1

QSA1

PKS1

ASPEC1

HOC

FE2XC

ISSC

RINC

ISSN

RDEN

WDTH1

R1CSC

CSSR

G1R

G2R

ISSR

SSR

SS2R

RATOR

RAT013R

RBORR

R1CSR

R1NR

R1N13R

RONER

RPORR

RTWOR

SYSTEM

0.000

TEN

TTEN

Created by : RPM9, v5.3.1.0

Plotted by : PlotMgr, v5.4.504

Company : WPX ENERGY

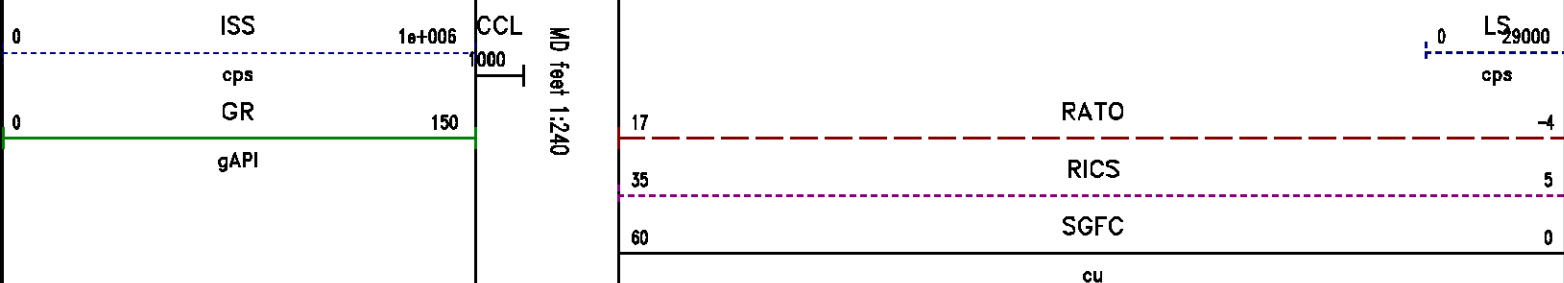
Well : GOLDSBOROUGH PA 412-11

File Name : D:\WELLDATA\412rpm\MAIN.XTF

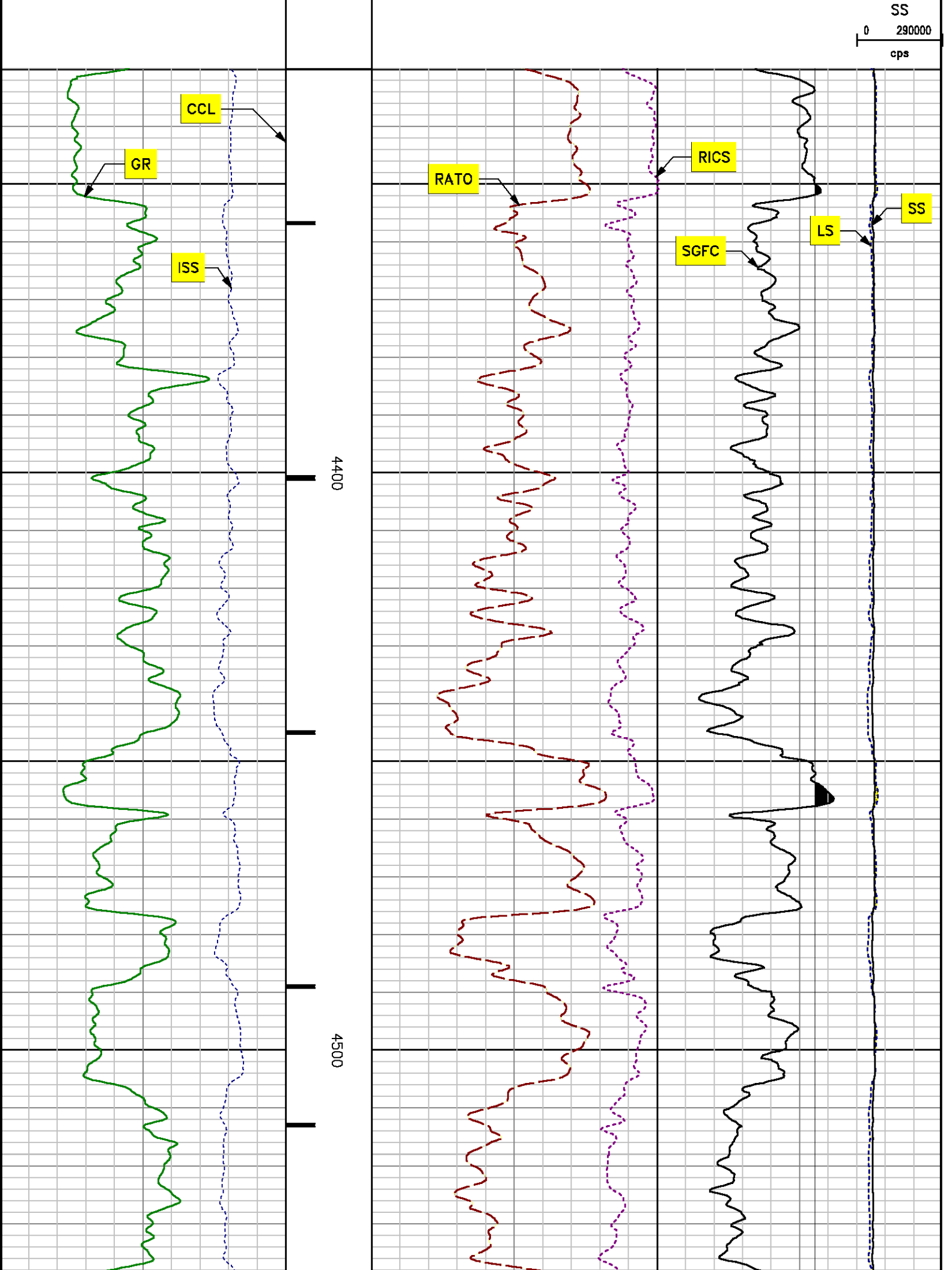
Mode : PlotMgr 5.4.504

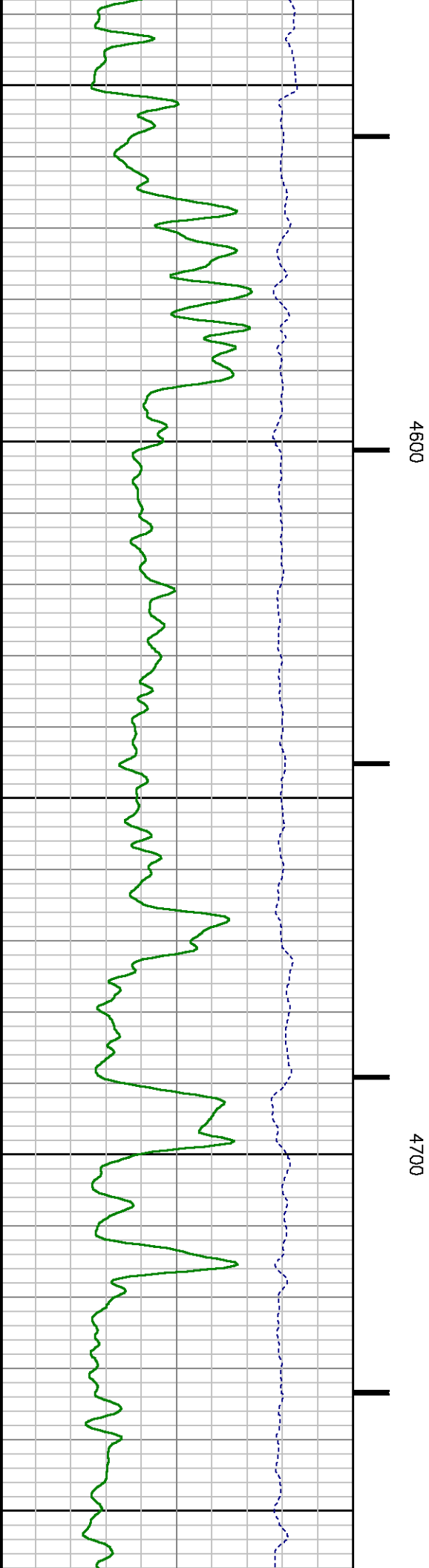
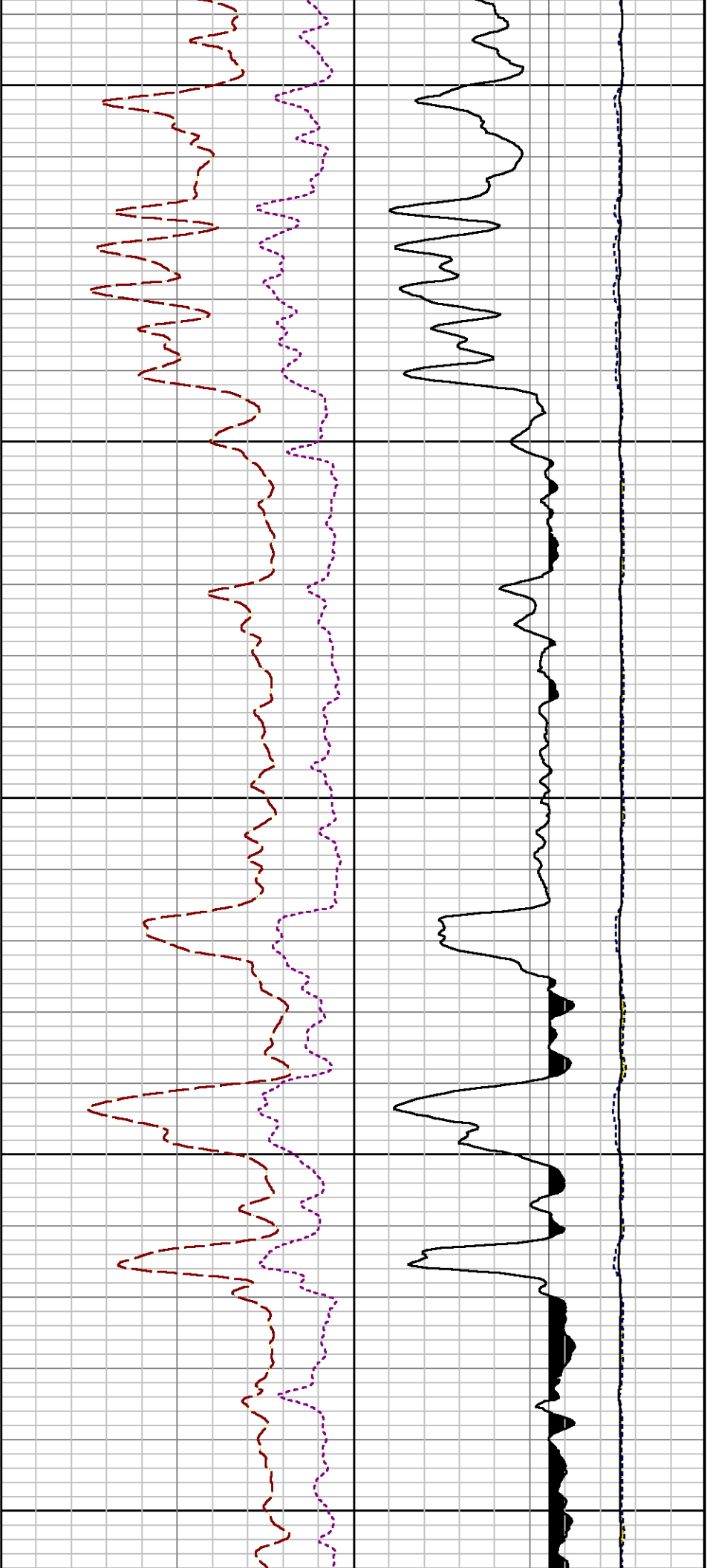
Interval : 4330.00 - 7855.00 feet UP

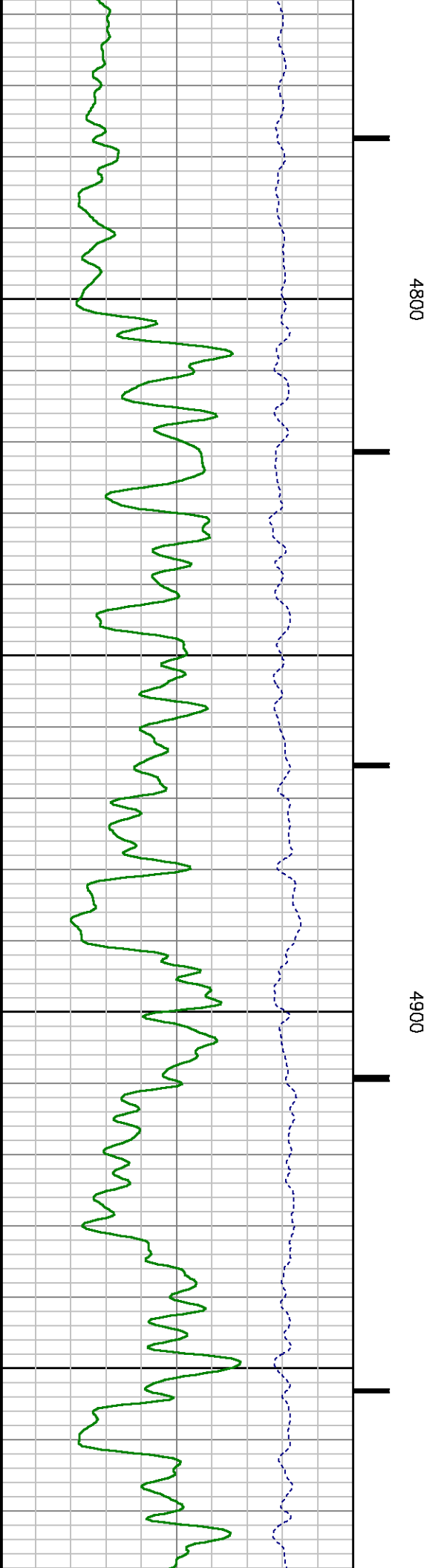
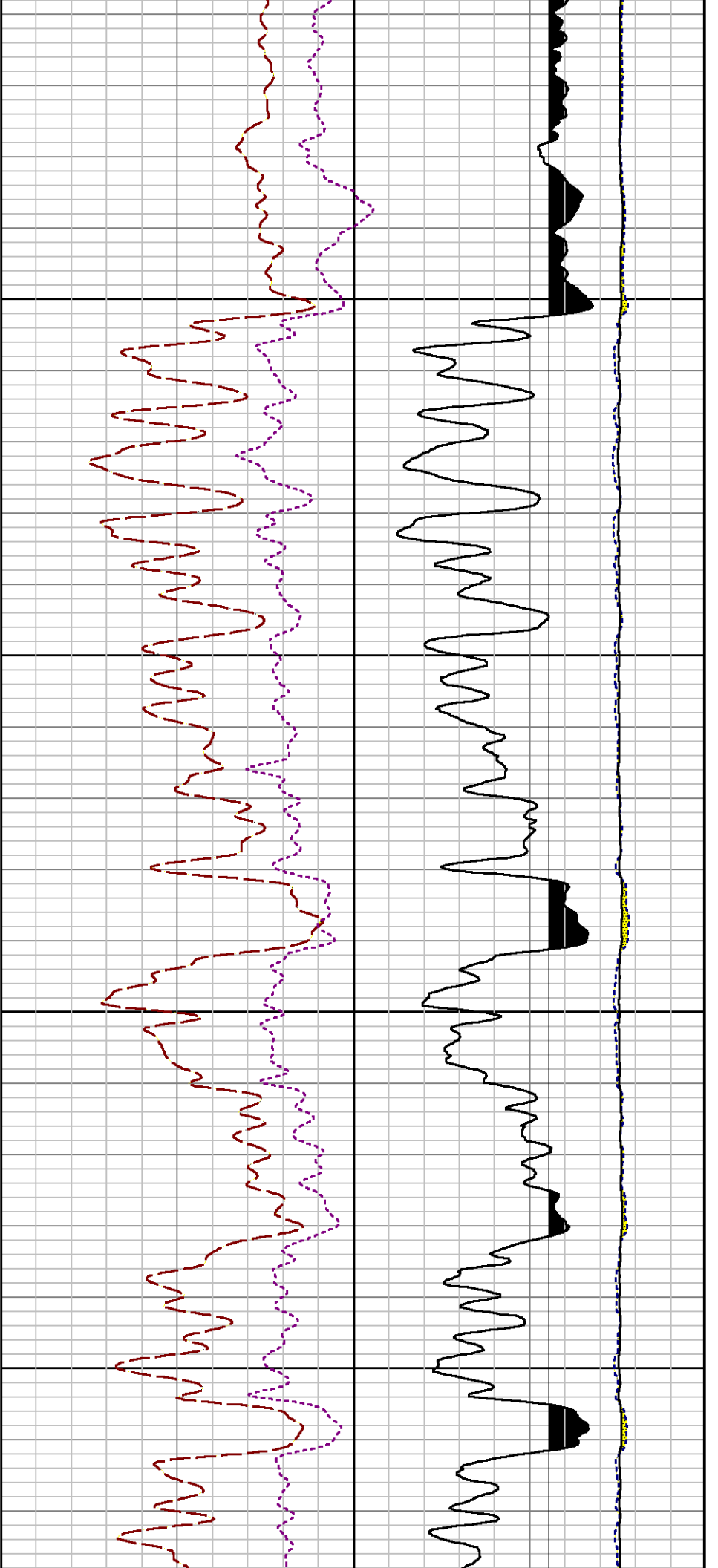
Created : 5/24/2013 9:03:46 AM

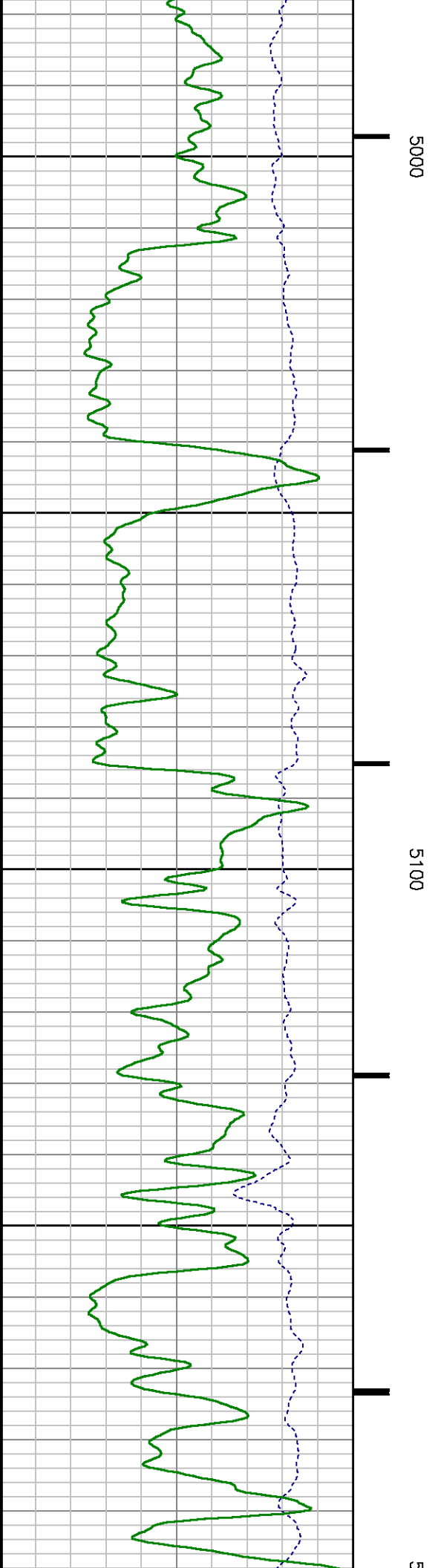
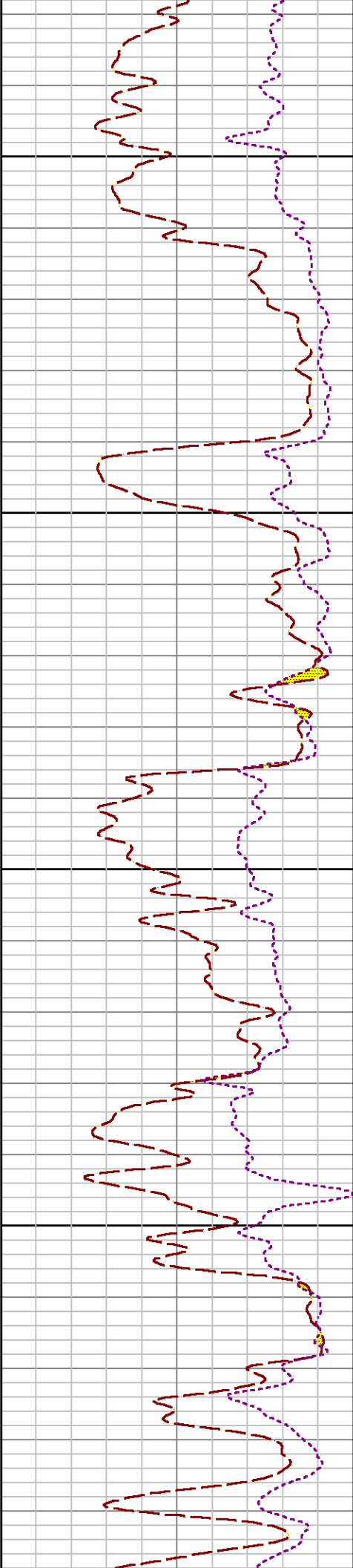
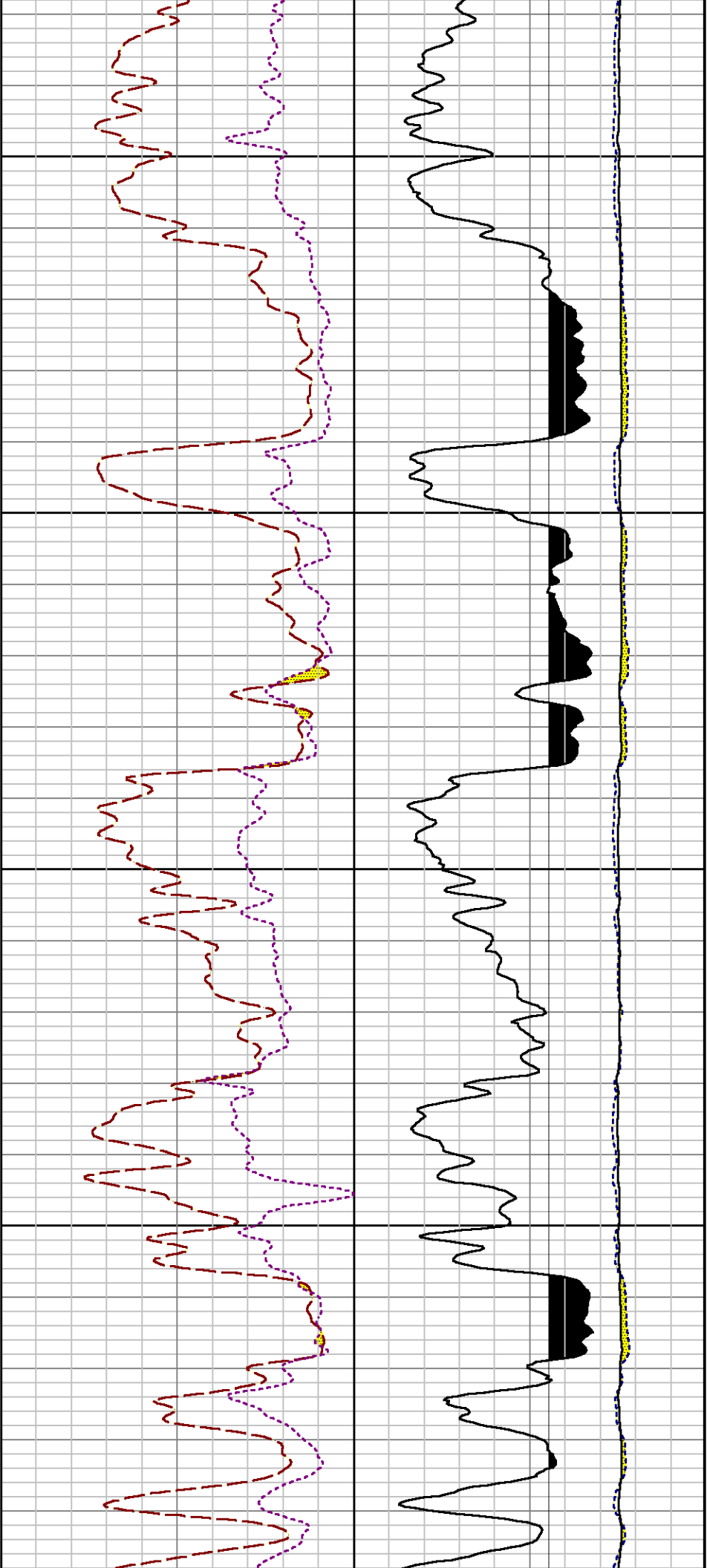


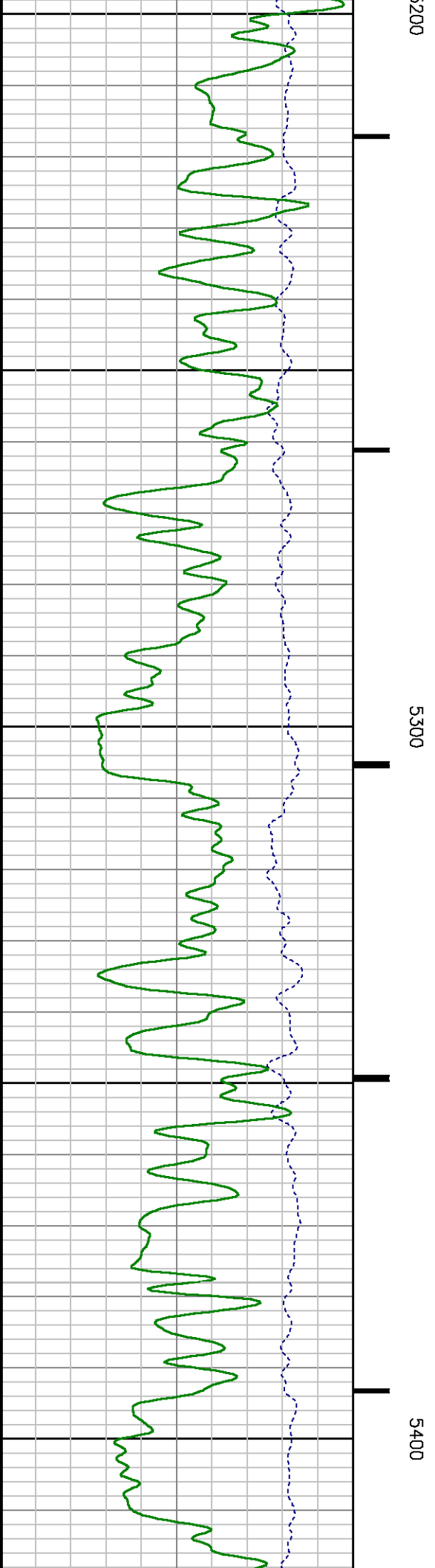
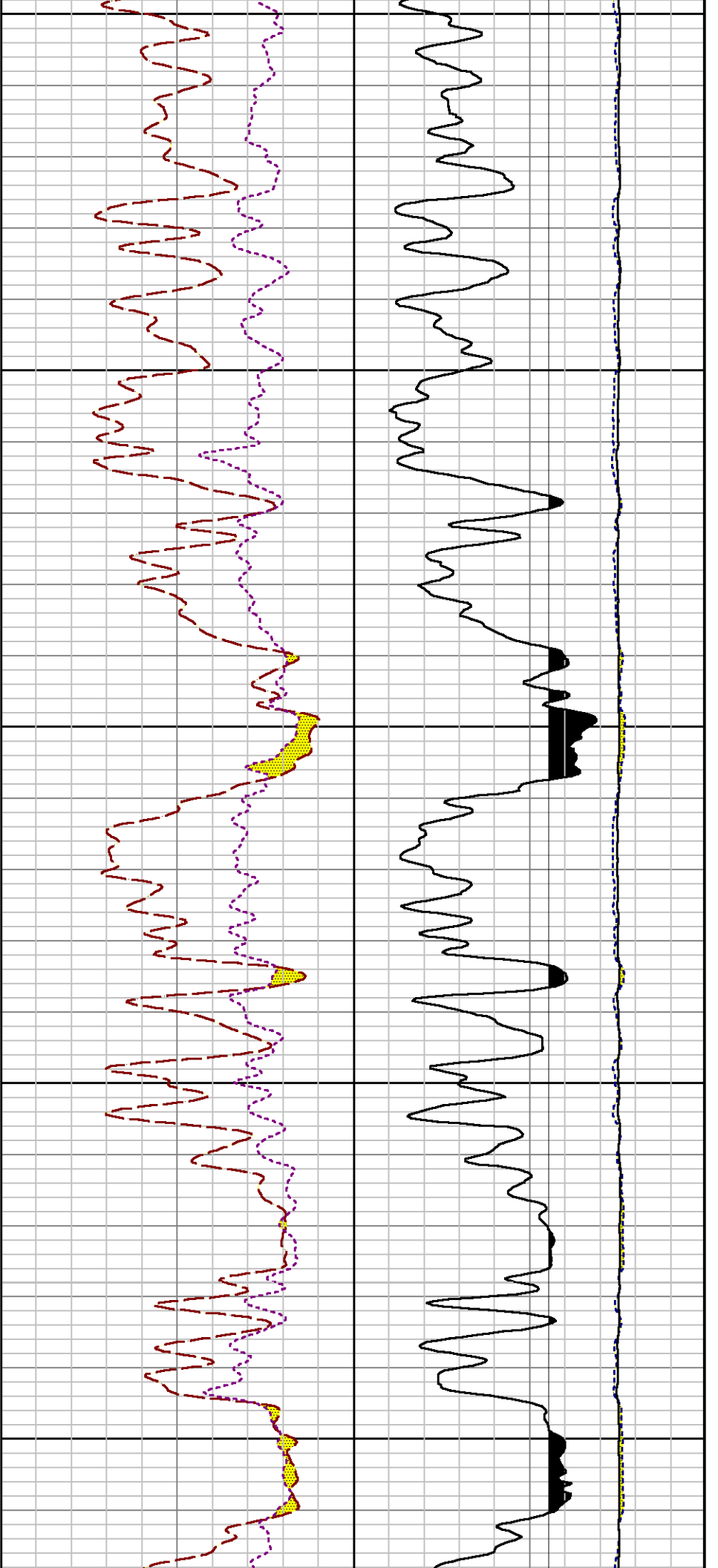
SS
0 290000
cps

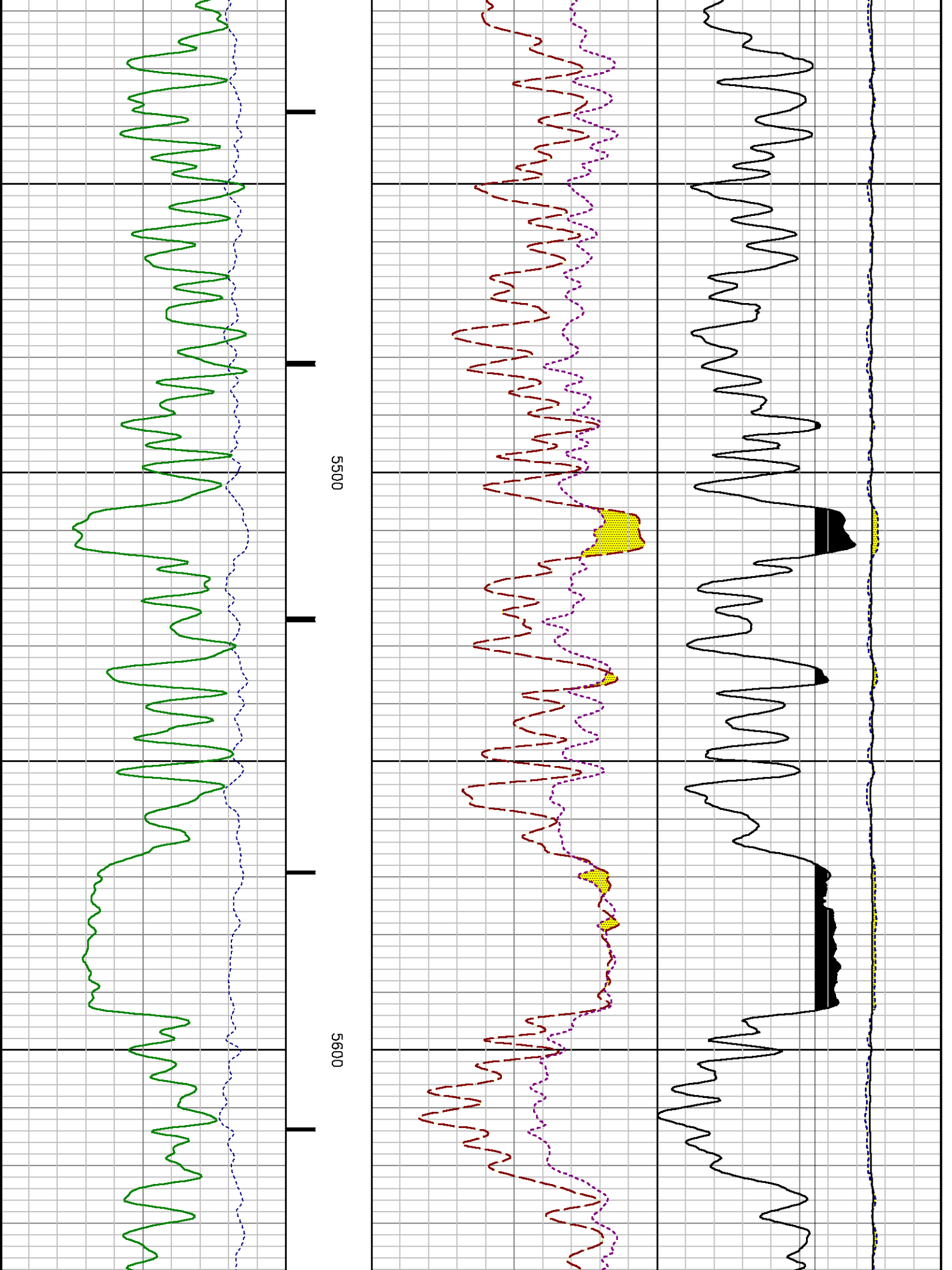


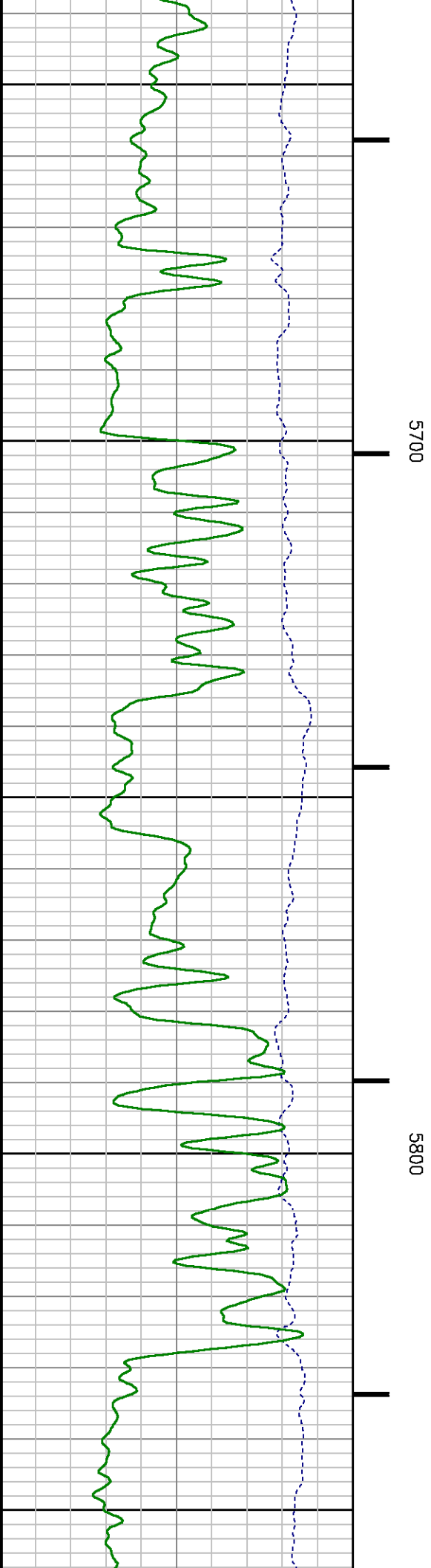
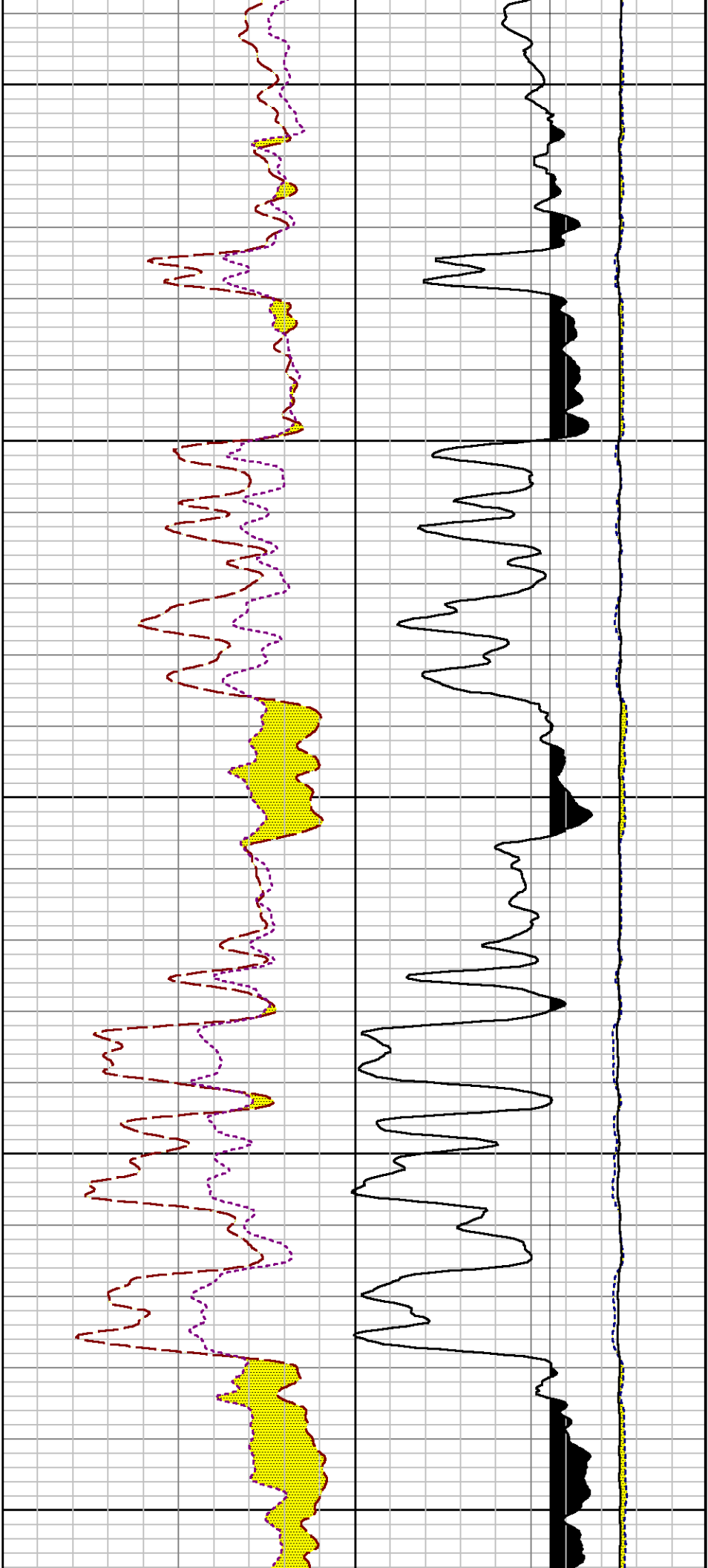


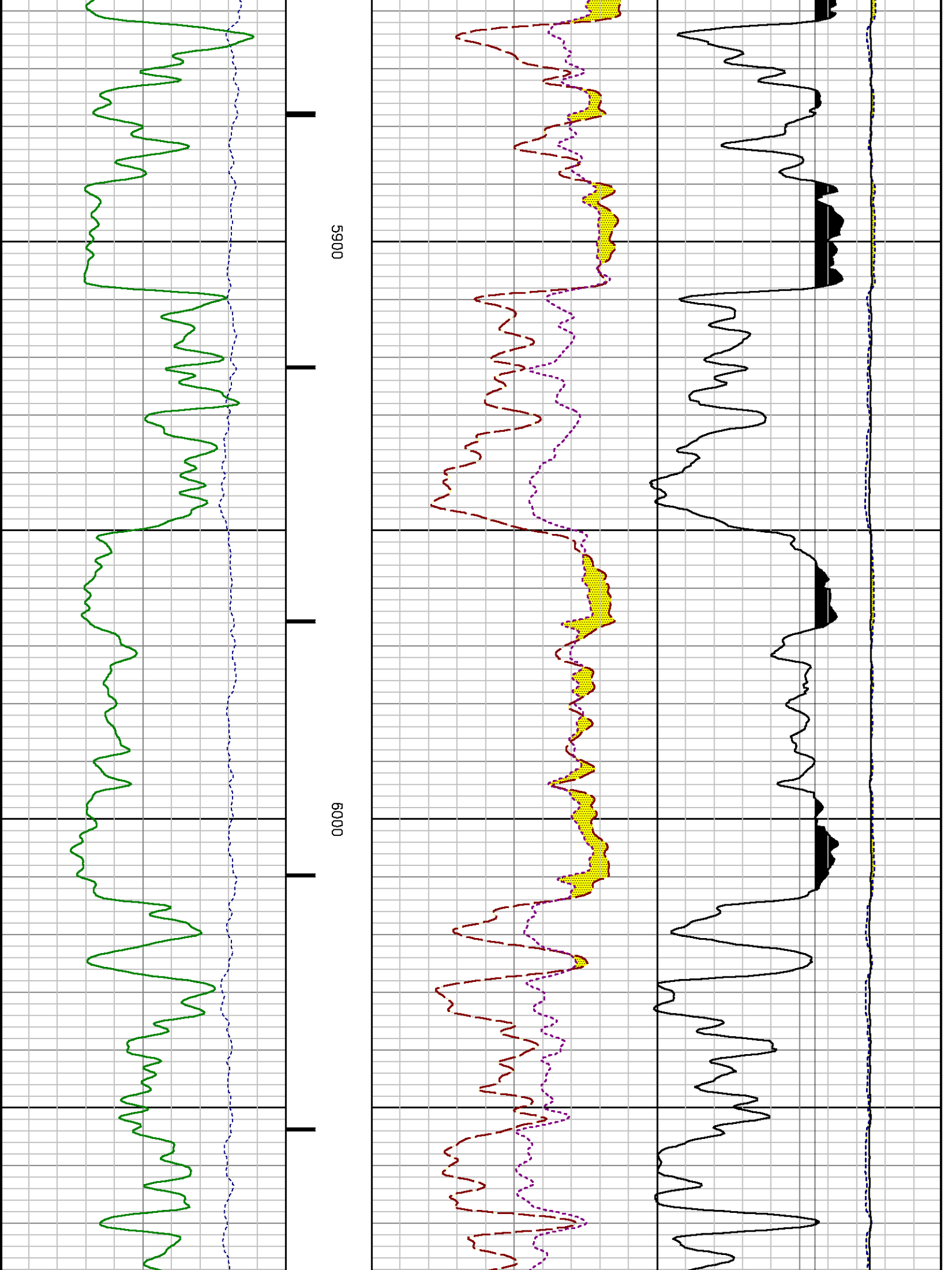


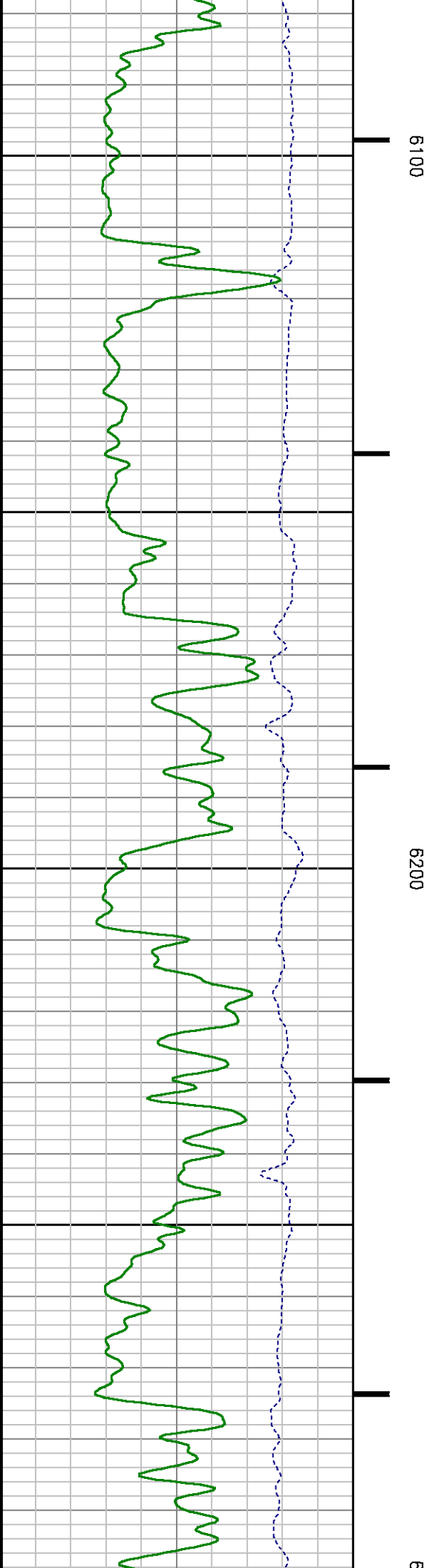
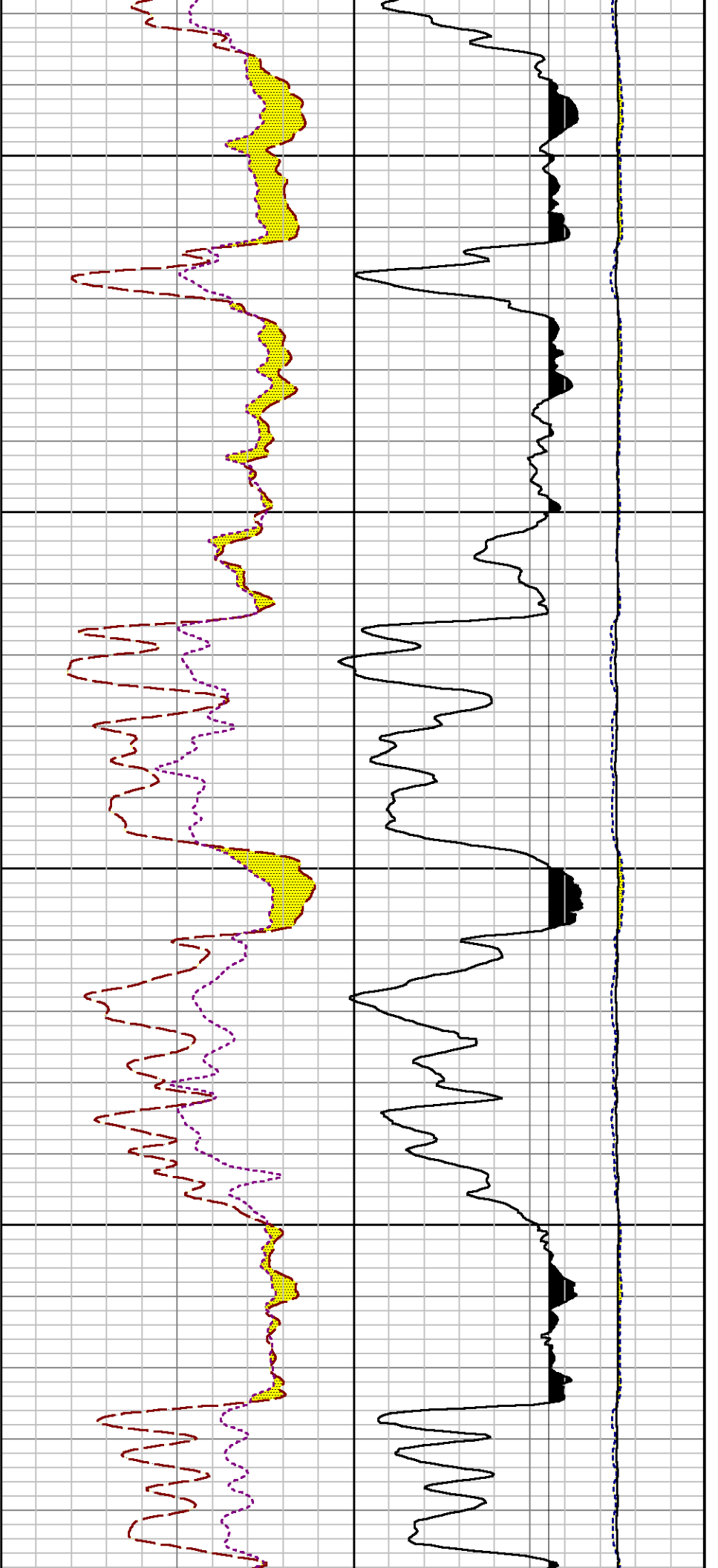


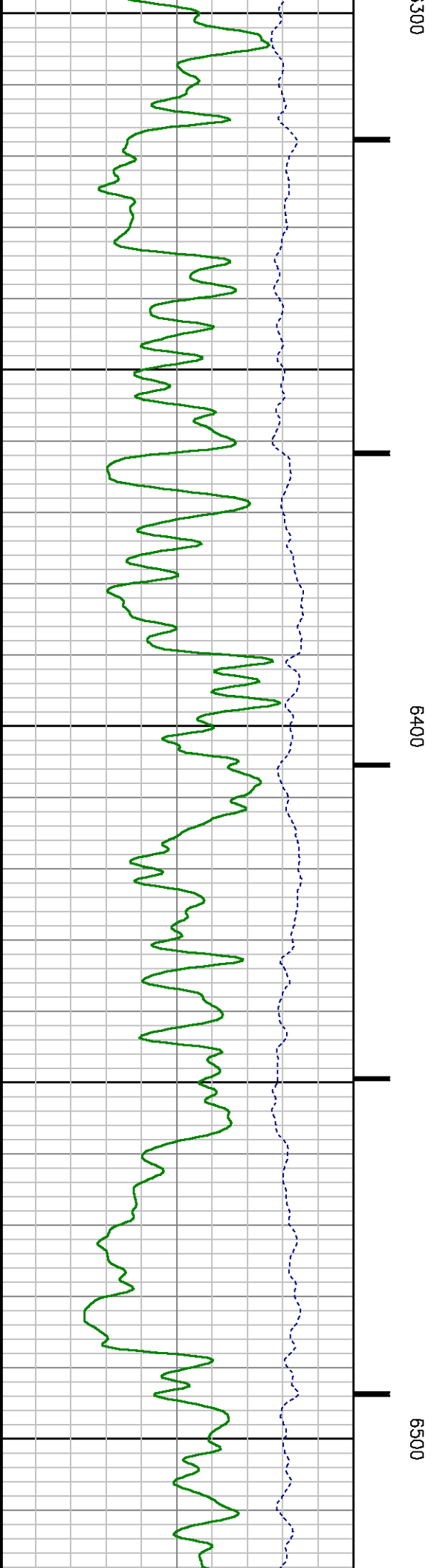
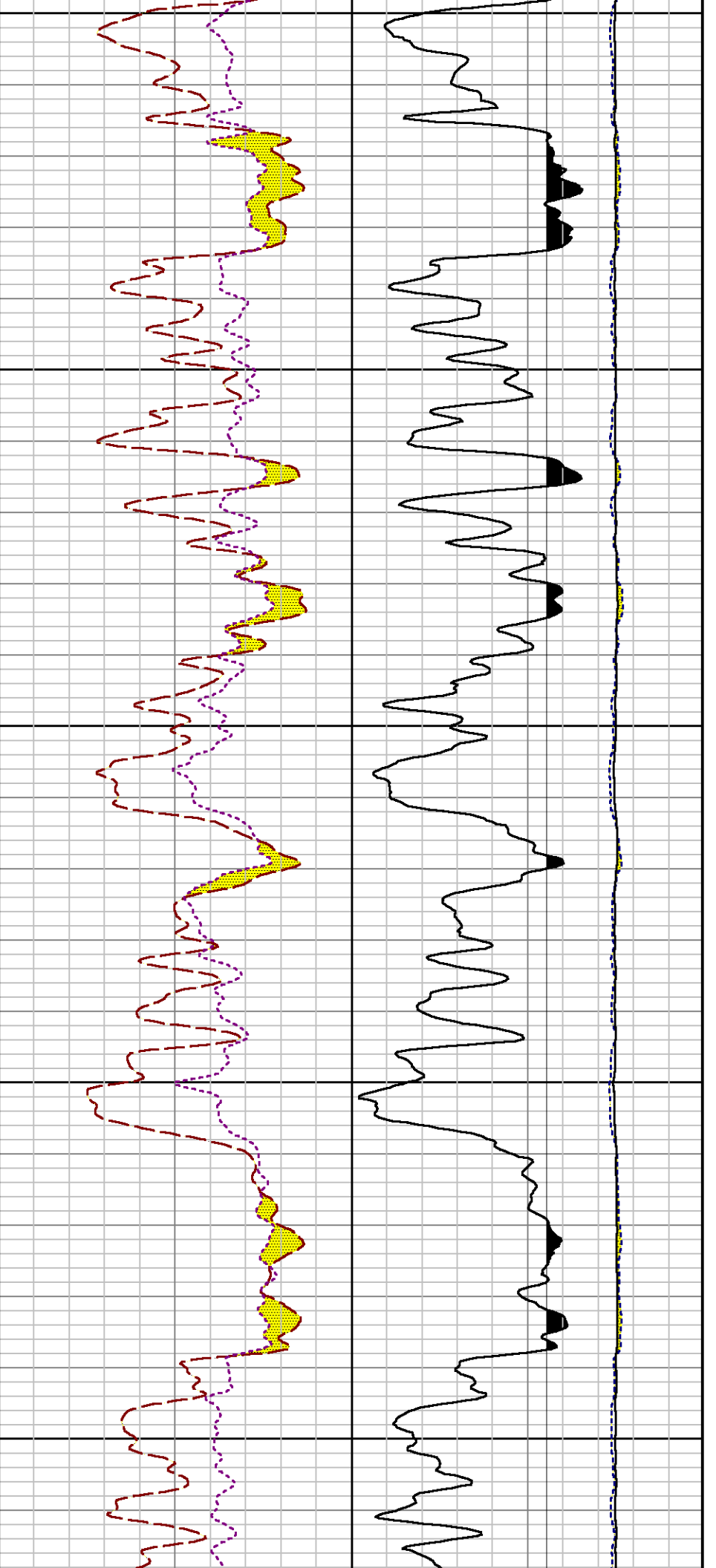


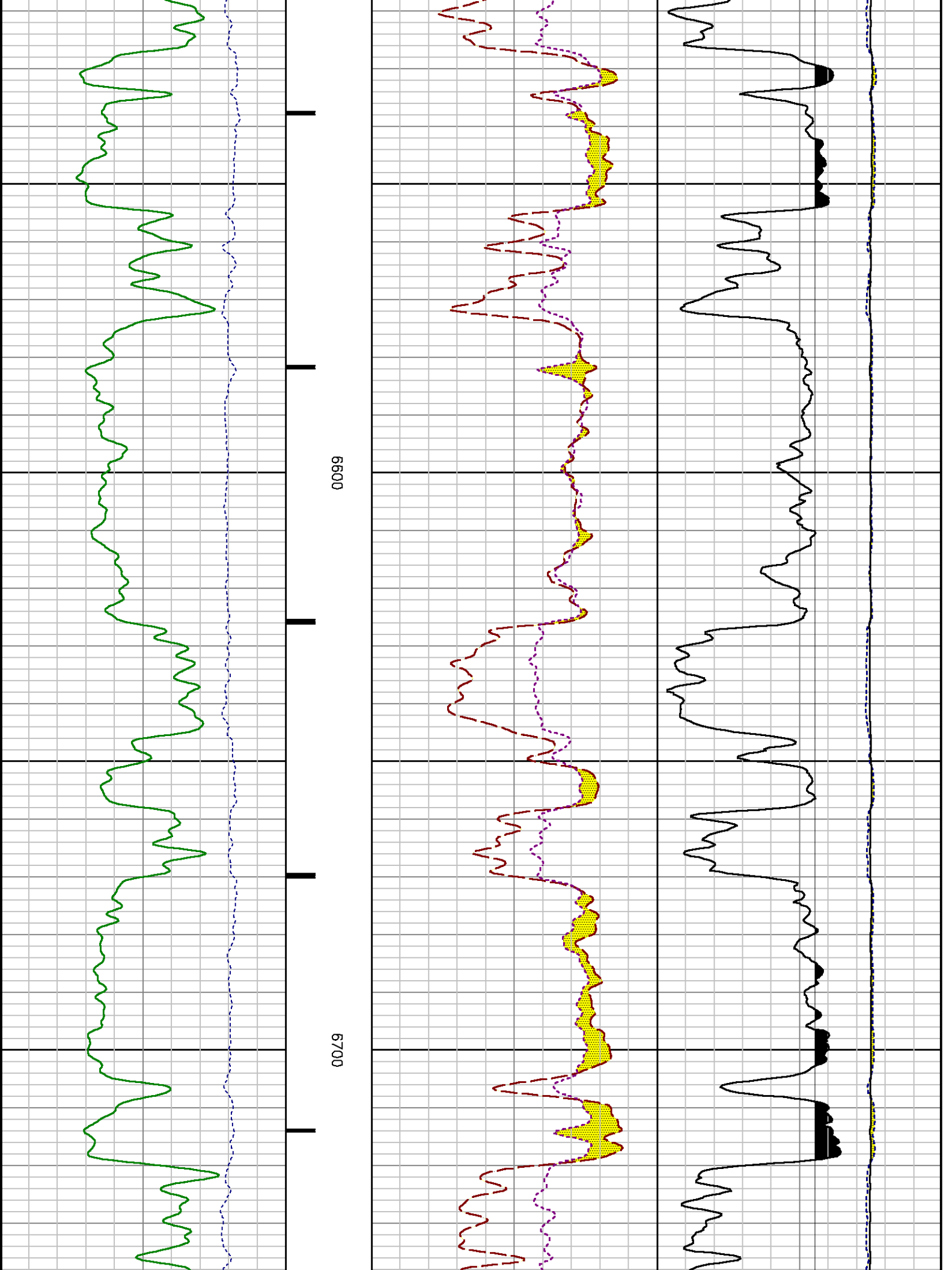


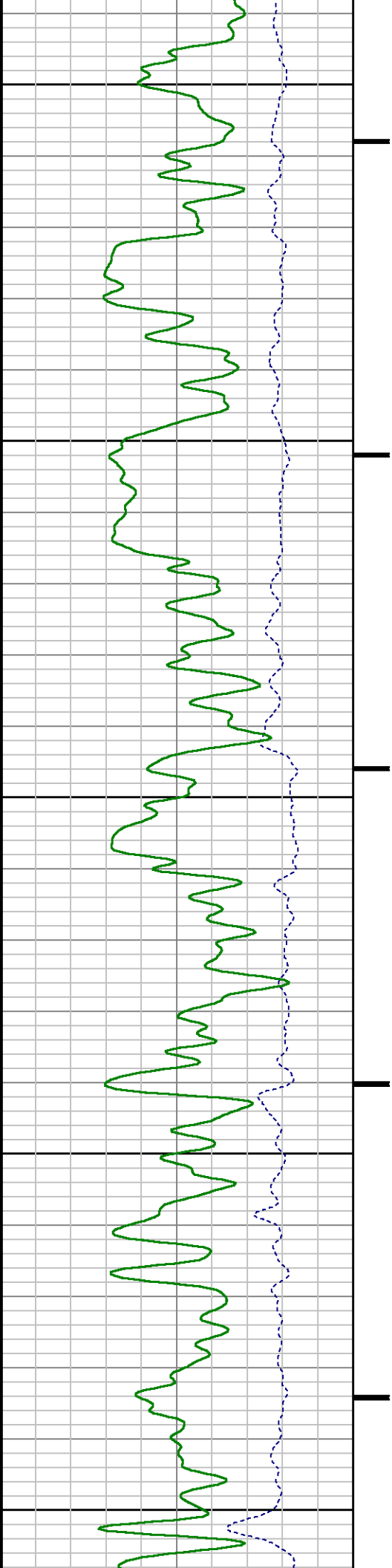






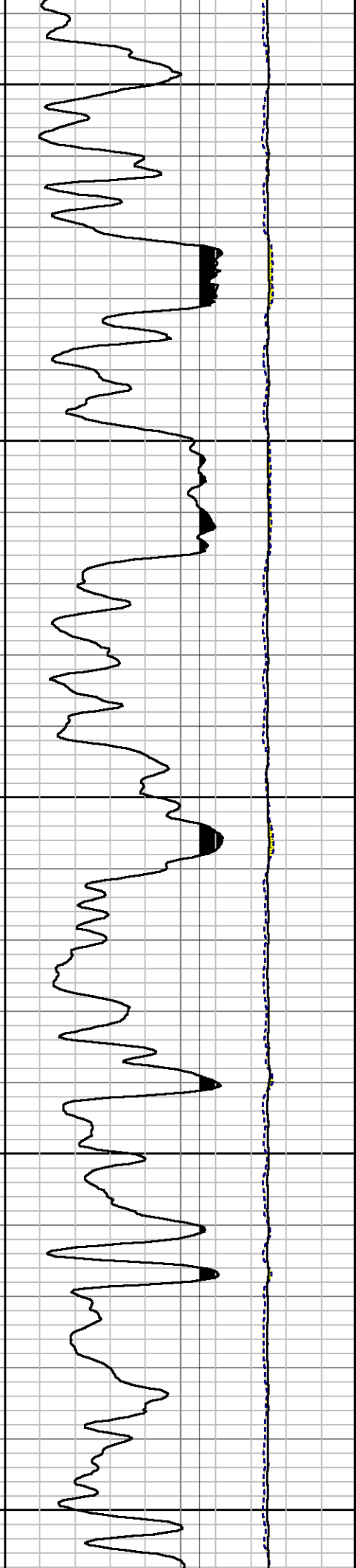
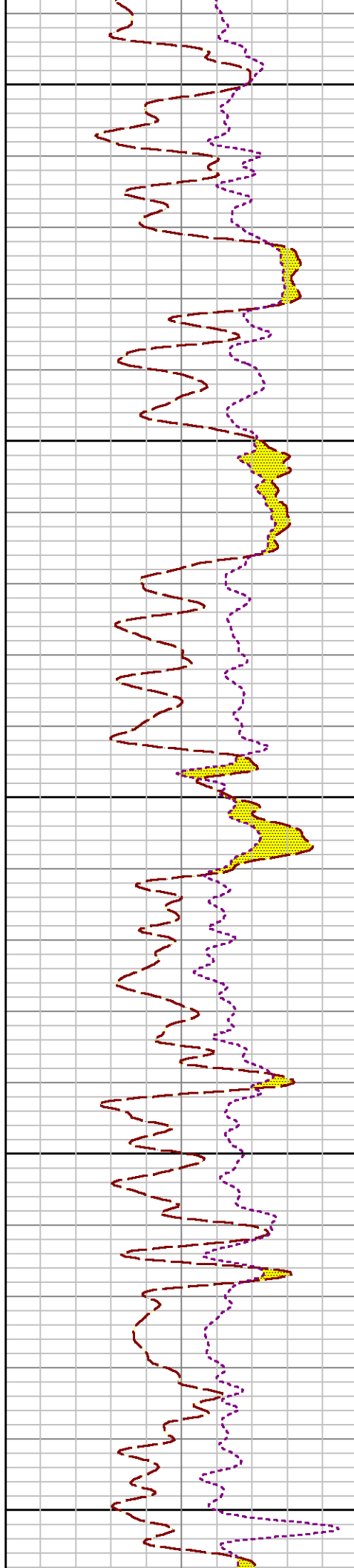


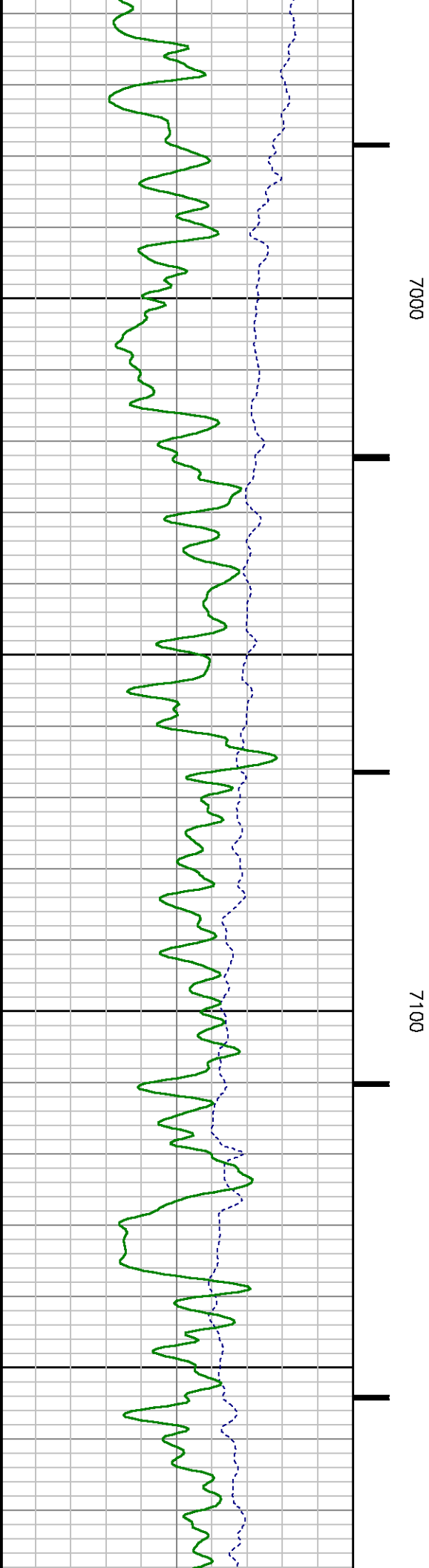
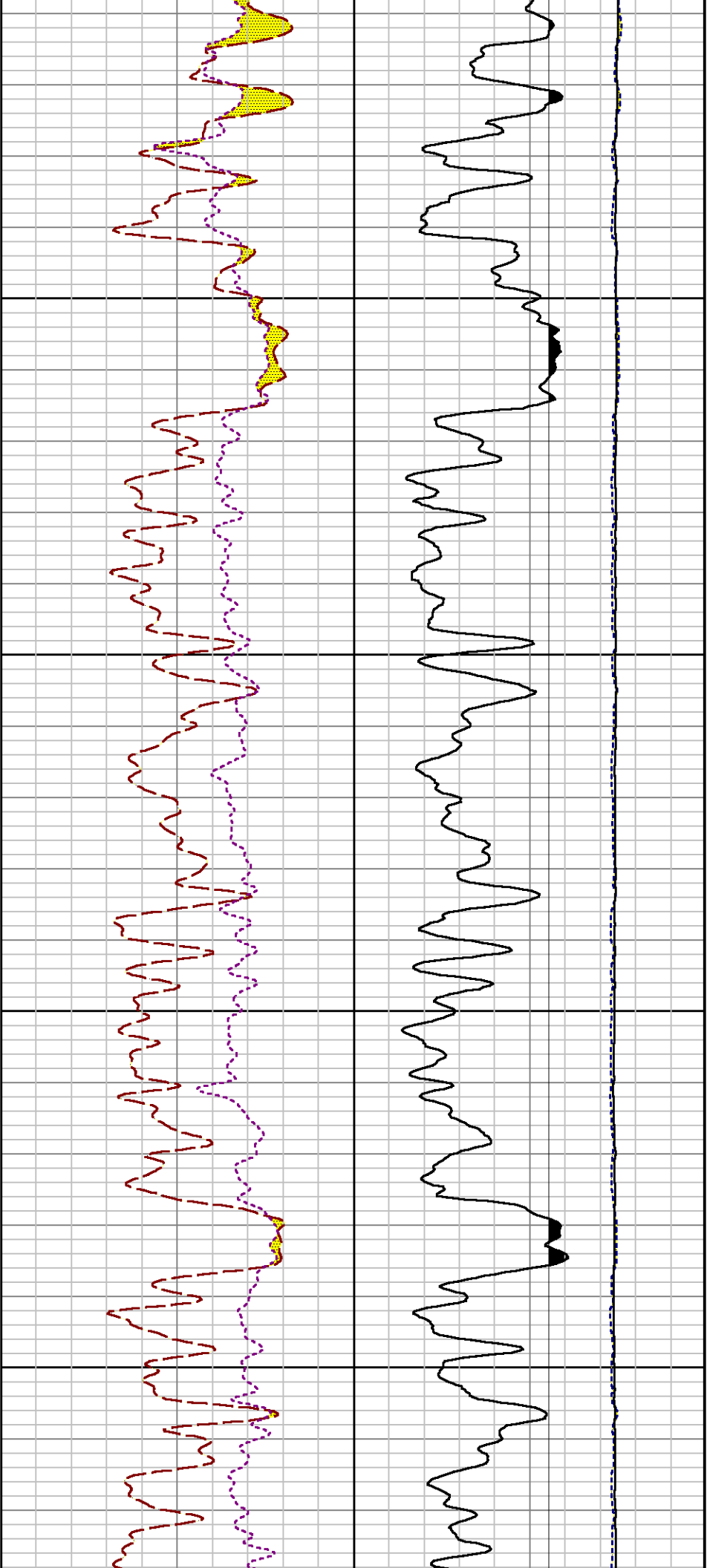


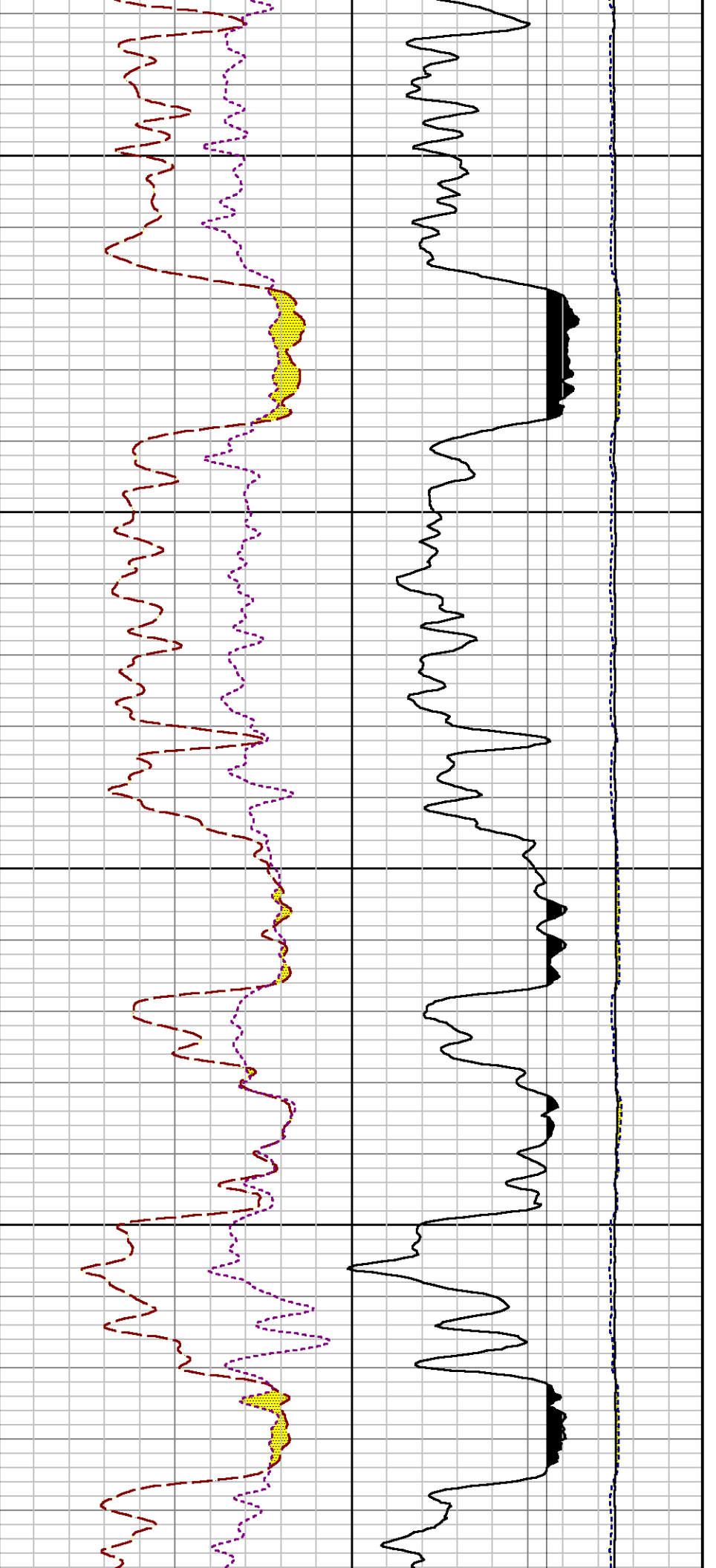


0089

0069



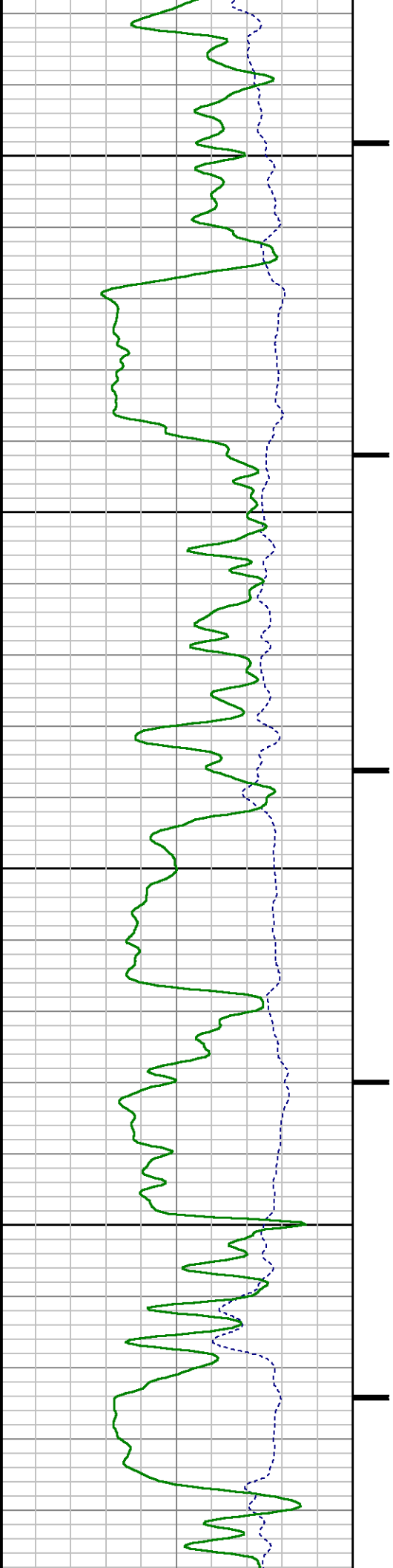


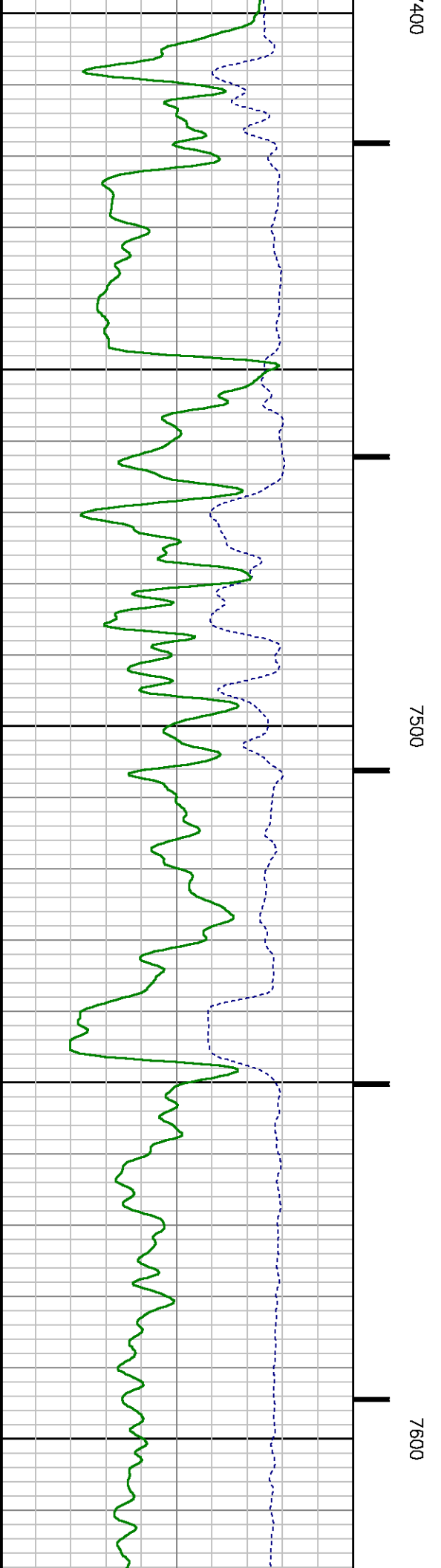
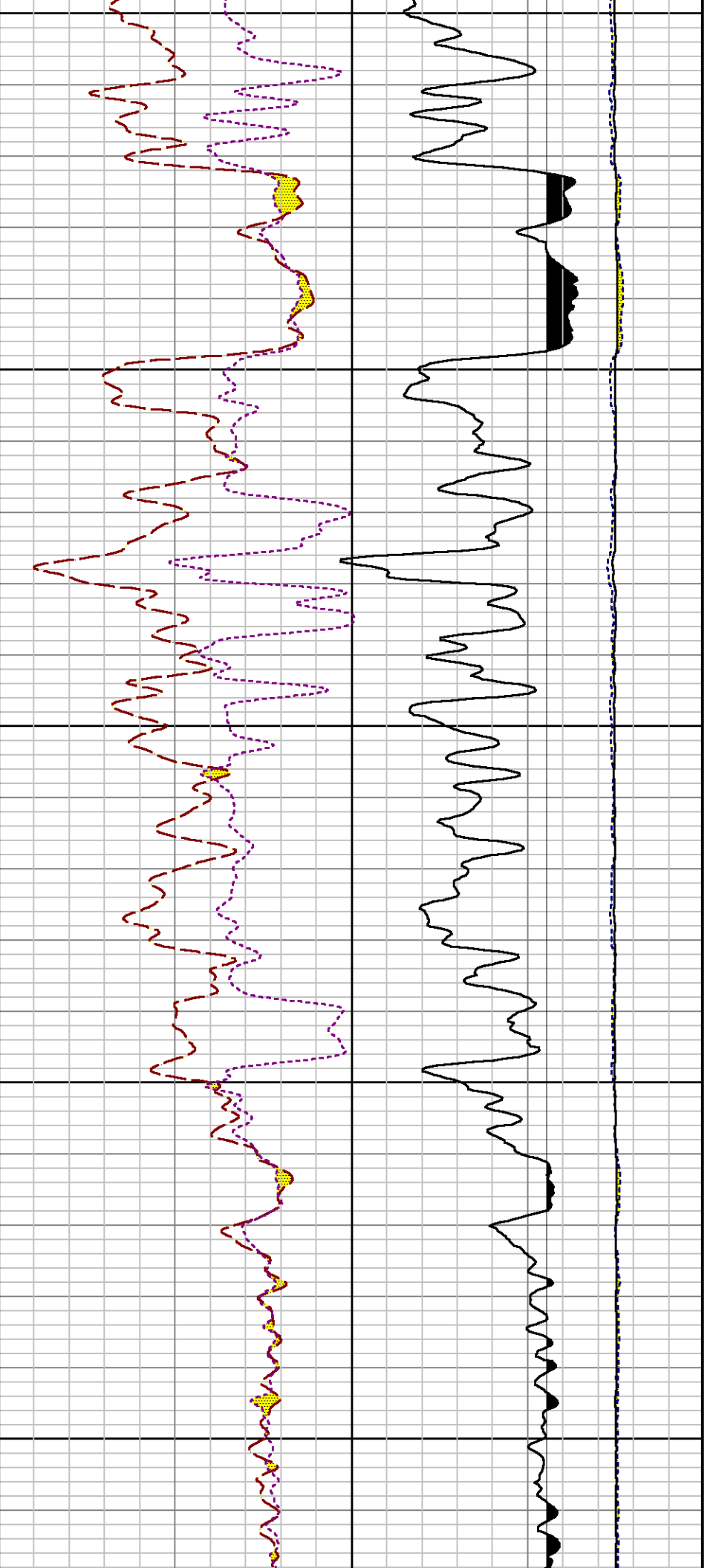


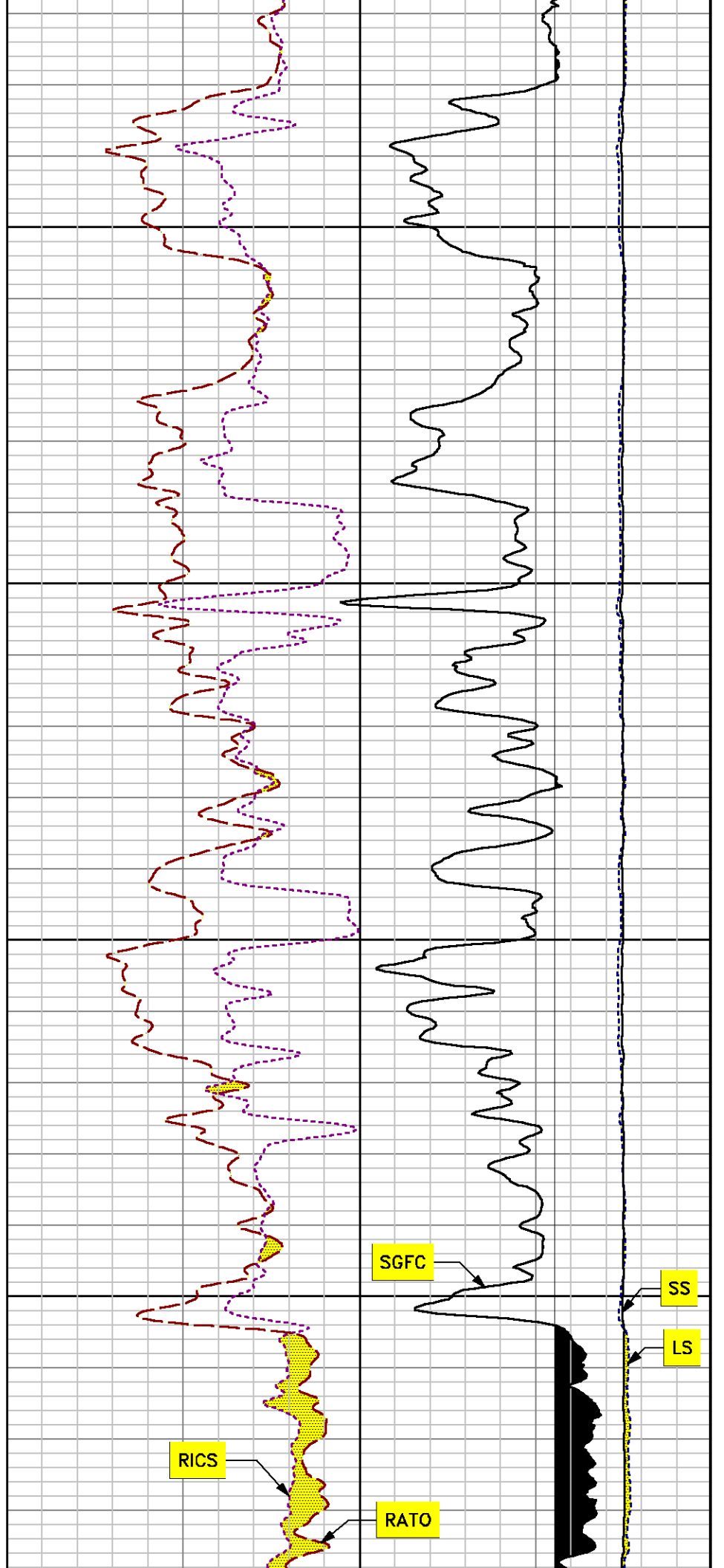
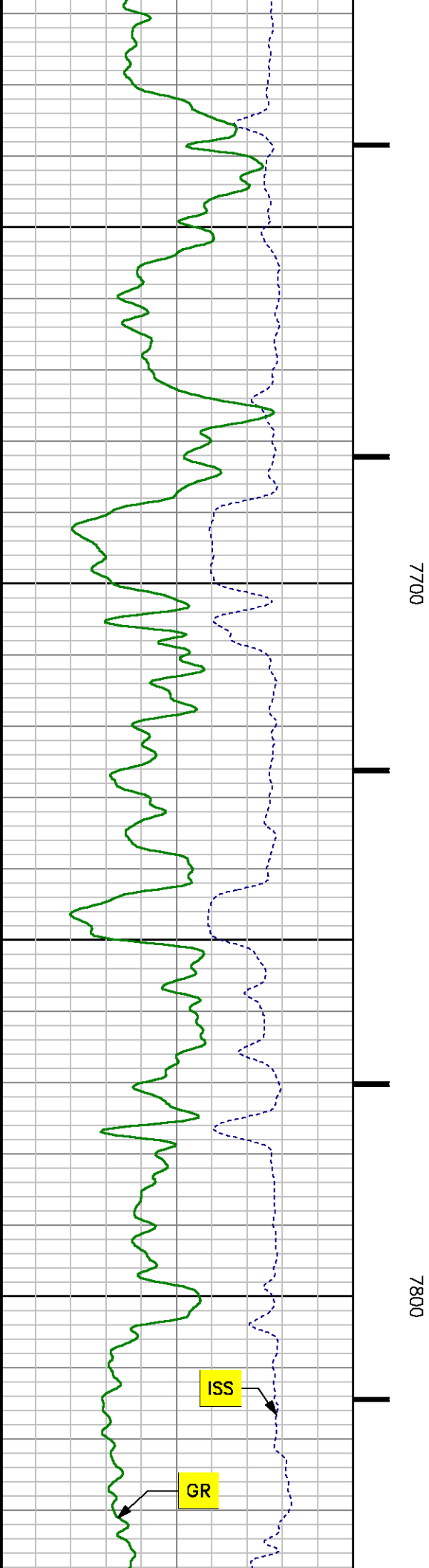
7200

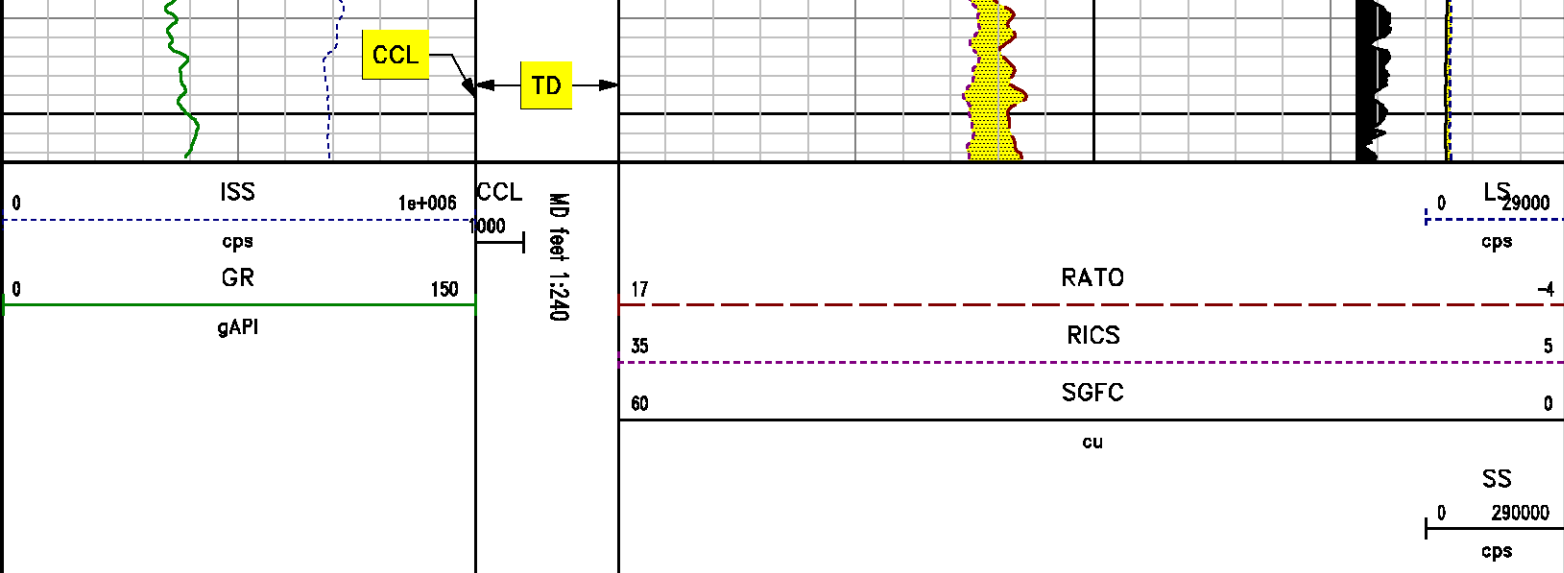
7300

7









REPEAT LOG PNC 3D MODE

SPL PROCESSING

MEASUREMENT TYPE	PARAMETER	VALUE	UNITS	TOP	BOTTOM
PNC Porosity	Borehole	Cased		6999.935	7315.000
PNC Porosity	Borehole Size	8.750	inch	6999.935	7315.000
PNC Porosity	Casing Size	4.500	inch	6999.935	7315.000
PNC Porosity	Gas Filled	Non Gas Filled		6999.935	7315.000
PNC Porosity	Matrix	Sandstone		6999.935	7315.000

DEPTH OFFSETS (for Acquired Curves)

SERIES	DEPTH OFFSET	ACQUIRED CURVES					
8248EA	-15.320	FLTM					
8248EA	-13.320	CCL	CHV				
8262XA	-10.189	GR					
8281XA	-0.662	HVC3Q0	SEQ3	AMA3	AML3	BKX	CXS
		CPT3Q0	CPT3Q2	CPT3Q3	CPT3Q4	ET3	IXS
		MCS3	MCS3Q0	QCAL3	RGN3	RICX	SDA3

8281XA

-0.250

SDL3	SGA3	SGL3	STA3	XS	ASPEC3
AMB3	AMF3	CHF3	IXSC	IXSN	RATO23
RICXC	RIN13C	RIN23	RIN23C	SD3D	SG3D
SGB3	SGF3	WDTH3	CXSR	IXSR	XSR
RICXR					
HVC2Q0	SEQ2	AMA2	AMB2	AMF2	AML2
BKL	CHF2	CLS	CPT2Q0	CPT2Q2	CPT2Q3
CPT2Q4	ET2	ILS	LS	MCS2	MCS2Q0
QCAL2	RGN2	RICL	RONE23	RTW023	SDA2
SDL2	SGA2	SGB2	SGF2	SGK2	SGL2
STA2	ASPEC2	ILSC	ILSN	WDTH2	RICLC
CLSR	ILSR	LSR	RICLR		

8281XA

0.000

CPRS	HVC1Q0	MV	SEQ	SEQ1	AMA1
AMB1	AME1	AMF1	AML1	BKS	CHF1
CSS	CORB	CORF	CPT1Q0	CPT1Q2	CPT1Q2A
CPT1Q2B	CPT1Q2C	CPT1Q3	CPT1Q4	CPT1Q5	ET1
G1	G2	GE1S	GE2S	ISS	MCS1
MCS1Q0	QA1	QCAL1	QM1	RATO	RATO13
RBOR	RGN1	RICS	RIN	RONE	RPOR
RTW0	RIN13	RONE13	RTW013	SALB	SC1
SDA1	SDL1	SGA1	SGB1	SGBC	SGE1
SGF1	SGFC	SGK1	SGL1	SS	SS2
STA1	PD1S	PD2S	PD3S	MD1S	MD2S
MD3S	DG1S	DG2S	DG3S	PD1M	PD2M
PD3M	MD1M	MD2M	MD3M	DG1M	DG2M
DG3M	MVS	MA	MVM	FILV	IAM
TA	PVM	PVS	IAS	SSTAT	QPD1
QPD2	QPD3	QMD1	QMD2	QMD3	QDG1
QDG2	QDG3	QMA	QTA	QFILV	QMV
QPV	QIA	DERR	DCNT	QPK1	QSA1
PKS1	ASPEC1	HOC	FE2XC	ISSC	RINC
ISSN	RDEN	WDTH1	RICSC	CSSR	G1R
G2R	ISSR	SSR	SS2R	RATOR	RATO13R
RBORR	RICSR	RINR	RIN13R	RONER	RPORR

SYSTEM

0.000

TEN TTEN

Created by : RPM9, v5.3.1.0

Plotted by : PlotMgr, v5.4.504

Company : WPX ENERGY

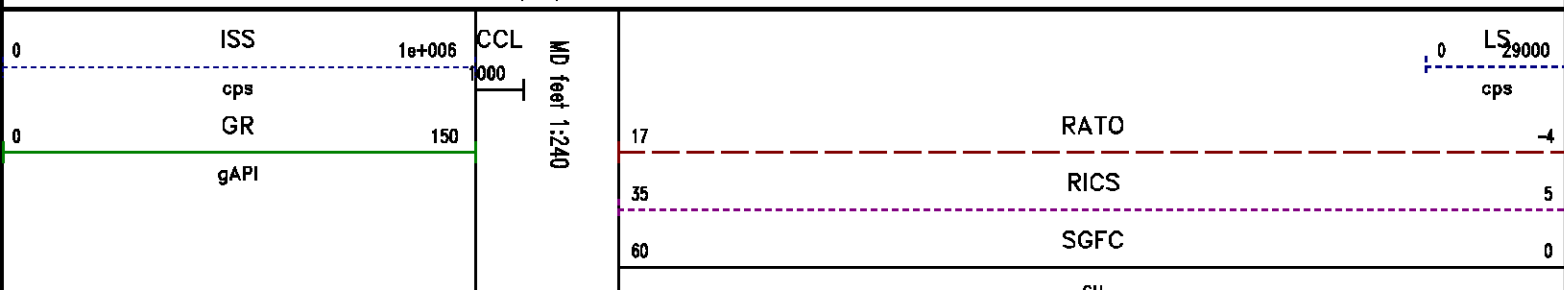
Well : GOLDSBOROUGH PA 412-11

File Name : d:\welldata\412rpm\repeat.xtf

Mode : PlotMgr 5.4.504

Interval : 7000.00 - 7310.00 feet UP

Created : 5/24/2013 8:37:58 AM

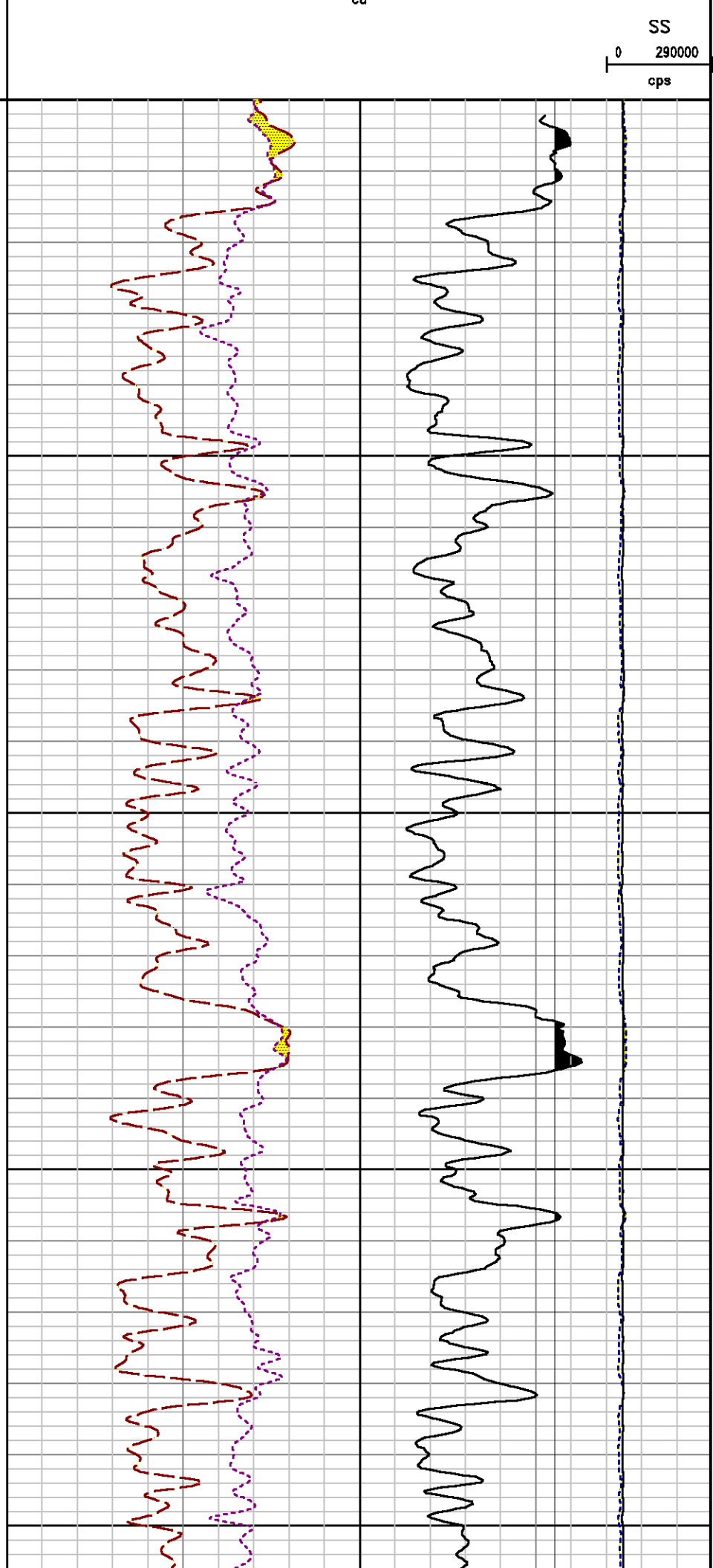


SS

290000

cps

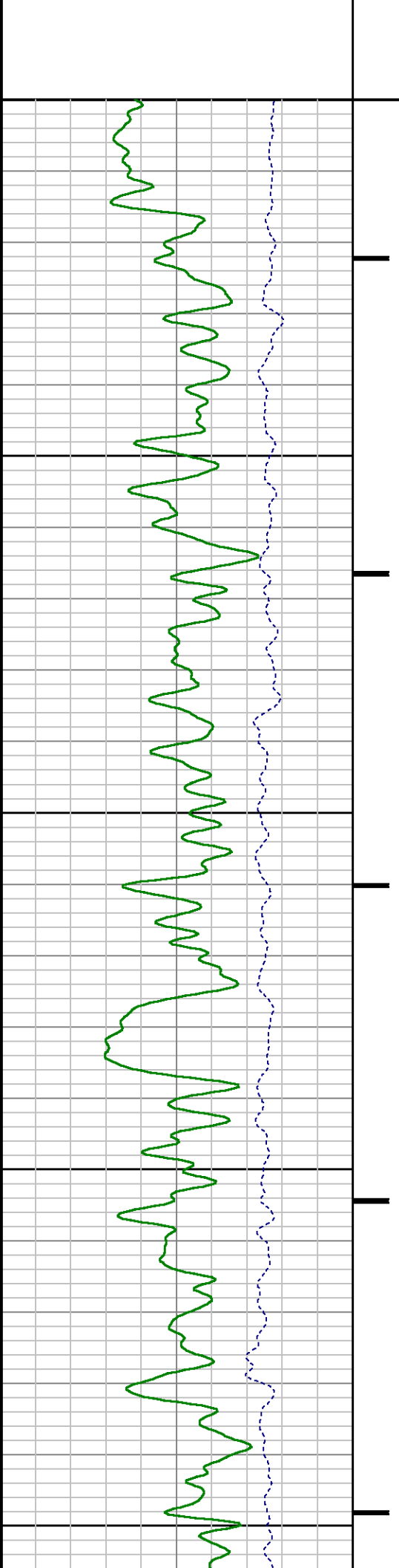
0

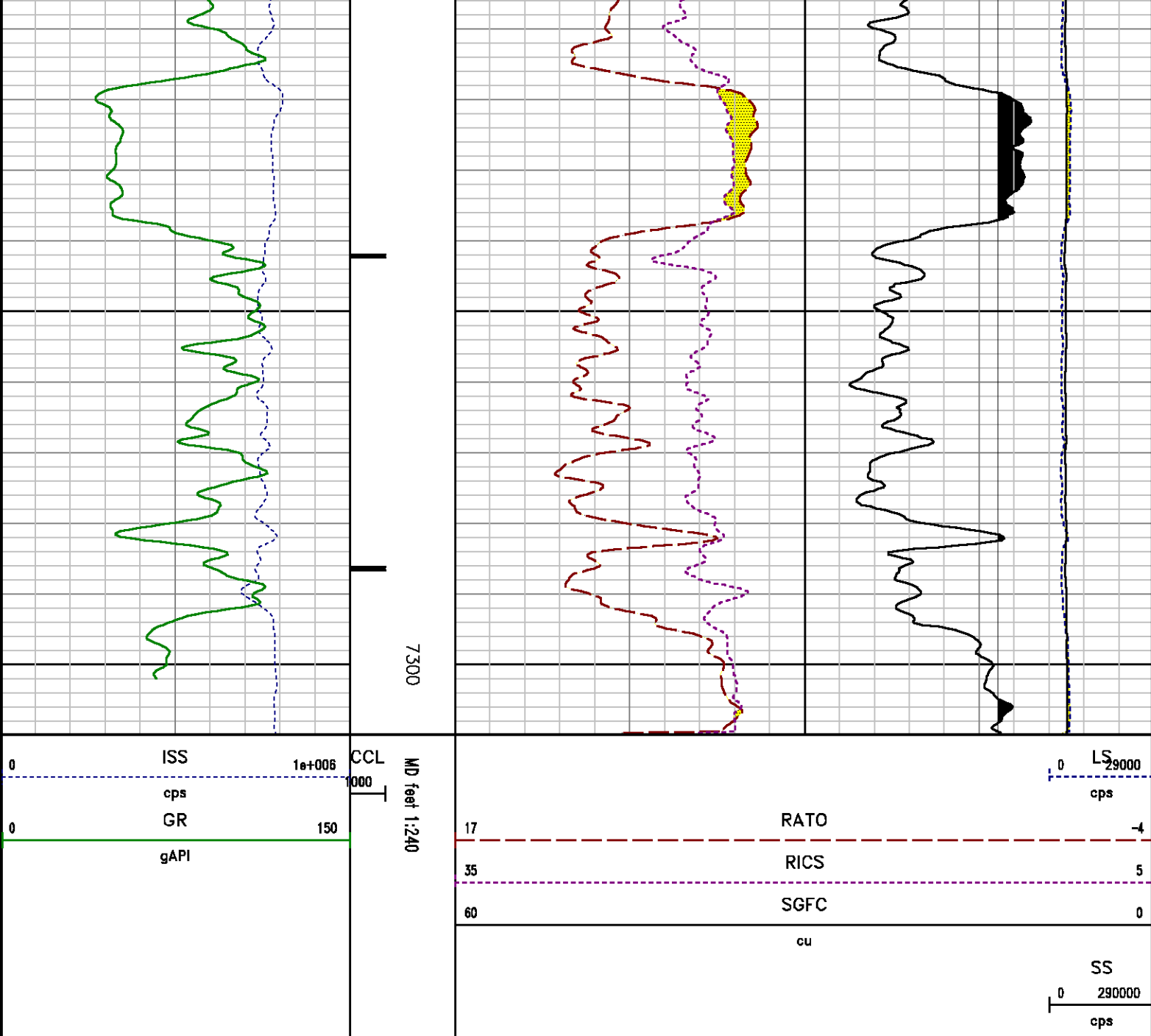


7000

7100

7200





CALIBRATION SUMMARY

PNC

Calibrator #

SHOP BARREL

Source #

8281AA 11765055

	ISS	Mtr Vlt (V)	SS Gain	LS Gain	XLS Gain	EA Temp (degF)	Sync Delay (usec)	RCAL
Raw Data	808654	131.00	2277.00	2368.00	2444.00	103.38	7.00	0.9655
Interpolated	1300000	154.83	2268.54	2367.73	2435.35			

	ISS	BKS	BKL	BKX	SGA1	SDA1	SGA2	SDA2
Raw Data	808654	6654.28	1021.75	147.72	25.84	0.14	24.35	0.29
					25.35 26.40	0.00 0.20	23.60 24.80	0.00 0.40

	ISS	ILS	IXS	SS	SS2	LS	CSS	CLS
Raw Data	808654	163648.69	25271.68	87594.75	31179.34	8008.51	53072.60	12804.65
Fit Quality %		0.66	0.79	0.96	0.97	0.57	0.94	0.56

	ISS	RBOR	RIN ISS/ILS	RIN13 ISS/IXS	RICS ISS/CSS	RATO SS/LS	RTWO SS2/LS	RONE CSS/CLS
Raw Data	808654	1.44	4.94	32.00	15.24	10.94	3.89	4.14
		1.42 1.45	3.55 5.52	22.20 32.70	10.99 16.34	10.06 11.10	3.57 3.95	3.76 4.22
Fit Quality %		0.04	0.20	0.21	0.03	0.25	0.26	0.25
Reduced	1400653	1.43	4.94	32.00	15.26	10.94	3.89	4.14
		1.42 1.45	4.33 5.52	27.60 32.70	13.70 16.34	10.06 11.10	3.57 3.95	3.76 4.22

GAMMA RAY

Calibration File: C:\case\calver\GR\055M3.cal

CALIBRATION SUMMARY

DATE/TIME PERFORMED:	Thu May 23 15:50:01 2013	TOOL SERIES:	8262XA	ASSET:	055	SEQ:	M3
Calibrator #	Background [cps]	Calibrator On [cps]	Multiplicative	Background [api]	Calibrator On [api]	Differential [api]	
JIG WA612	81.82	380.87	0.602	49.25	229.25	180.00	

Verification File: C:\case\calver\GR\055M3.VP

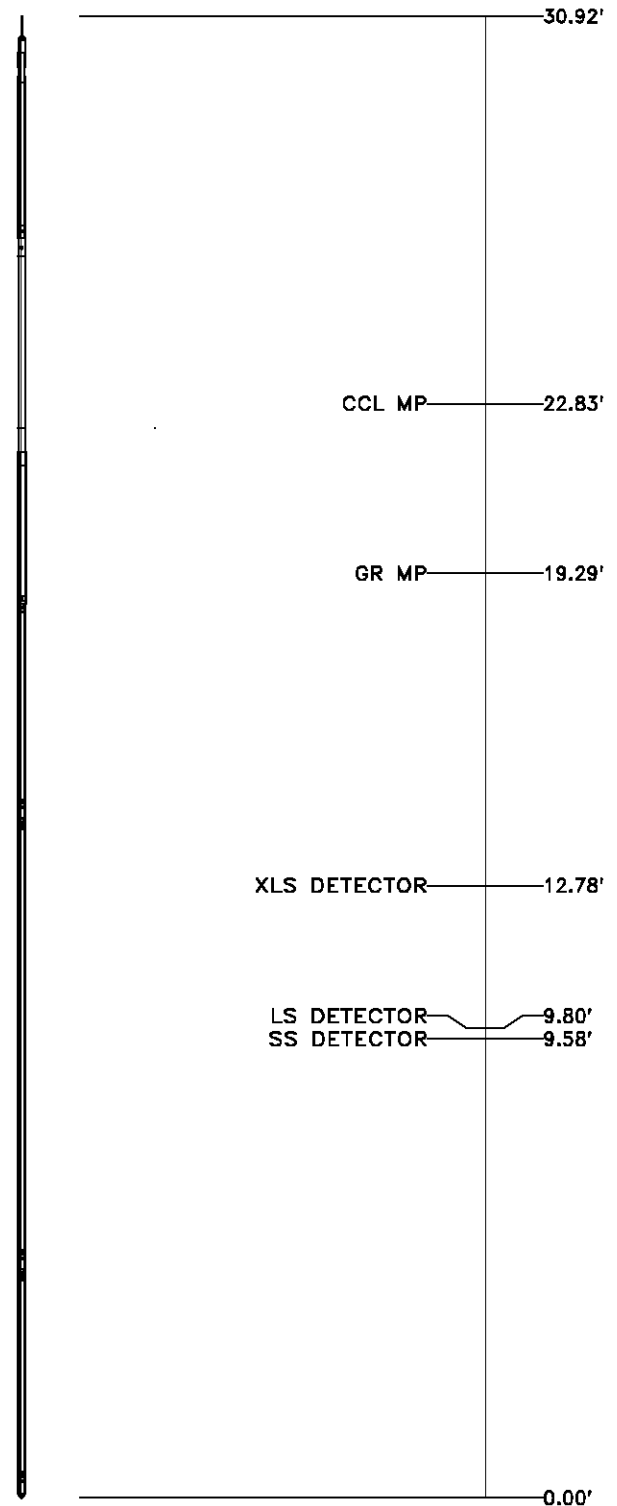
PRIMARY VERIFICATION

DATE/TIME PERFORMED:	Thu May 23 15:52:39 2013	TOOL SERIES:	8262XA	ASSET:	055	SEQ:	M3
Calibrator #	Background [cps]	Calibrator On [cps]	Multiplicative	Background [api]	Calibrator On [api]	Differential [api]	
JIG WA612	83.76	386.09	0.602	50.41	232.39	181.98	

TOOL DIAGRAM

OTA SHORT CABLE HEAD	
PCM POWER SUPPLY	
Series	8250EA
Mnemonic	PCM
Diameter	1.70"
Weight	18.00 lb
Length	3.86'
Temp Rating	350.00 °F
TELEMETRY / CCL	
Series	8248EA
Mnemonic	PCM
Diameter	1.70"
Weight	20.00 lb
Length	4.46'
Measure Point	1.00' CCL MP
Temp Rating	350.00 °F
Press Rating	15000.00 PSI
GAMMA RAY	
Series	8262XA
Mnemonic	GR
Diameter	1.70"
Weight	15.00 lb
Length	3.17'

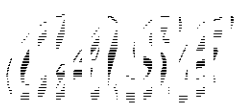
RESERVOIR PERFORMANCE MONITOR	
Series	8281XA
Mnemonic	RPM
Diameter	1.70"
Weight	75.00 lb
Length	18.58'
Measure Point	9.49' SS DETECTOR
Measure Point	9.72' LS DETECTOR
Measure Point	12.69' XLS DETECTOR
Temp Rating	350.00 °F
Press Rating	20000.00 PSI



Total Length: 30.92'
 Total Weight: Not Available
 Max Diameter: 0' 1.70"



Baker Atlas



Company	WPX ENERGY		
Well	GOLDSBOROUGH PA 412-11		
Field	PARACHUTE		
County	GARFIELD	State	COLORADO

File No:	CH072152
API No:	05045218270000

Location		Elevations	
SHL: 2413' FNL & 2052' FWL SEC:11		KB	6295 ft
BHL: 2047' FNL & 657' FWL SEC:11		DF	
		GL	6274 ft
SEC	11	TWP	7S
		RGE	95W

11 7S 95W
PA 22-11
CYCLONE 17