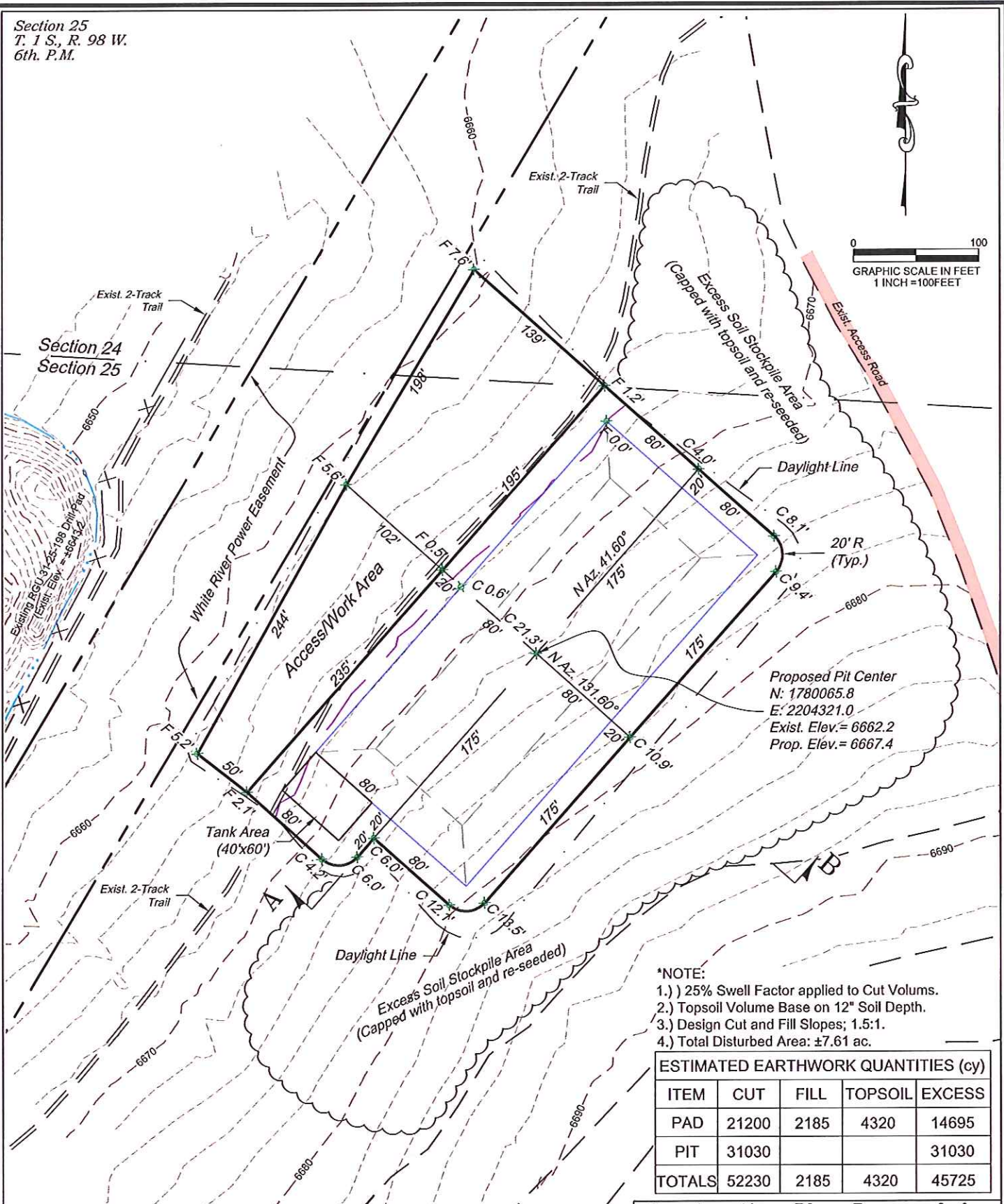
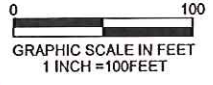


Section 25
T. 1 S., R. 98 W.
6th. P.M.



Proposed Pit Center
N: 1780065.8
E: 2204321.0
Exist. Elev.= 6662.2
Prop. Elev.= 6667.4

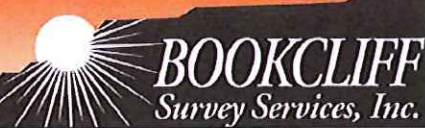
- *NOTE:
- 1.) 25% Swell Factor applied to Cut Volumes.
 - 2.) Topsoil Volume Base on 12" Soil Depth.
 - 3.) Design Cut and Fill Slopes; 1.5:1.
 - 4.) Total Disturbed Area: ±7.61 ac.

ESTIMATED EARTHWORK QUANTITIES (cy)				
ITEM	CUT	FILL	TOPSOIL	EXCESS
PAD	21200	2185	4320	14695
PIT	31030			31030
TOTALS	52230	2185	4320	45725

REVISED: 5/8/13

Construction Plan Prepared for:
WPXENERGY WPX Energy Rocky Mountain, LLC
*NE Ryan Gulch Water Recycling Pit
CONSTRUCTION LAYOUT*

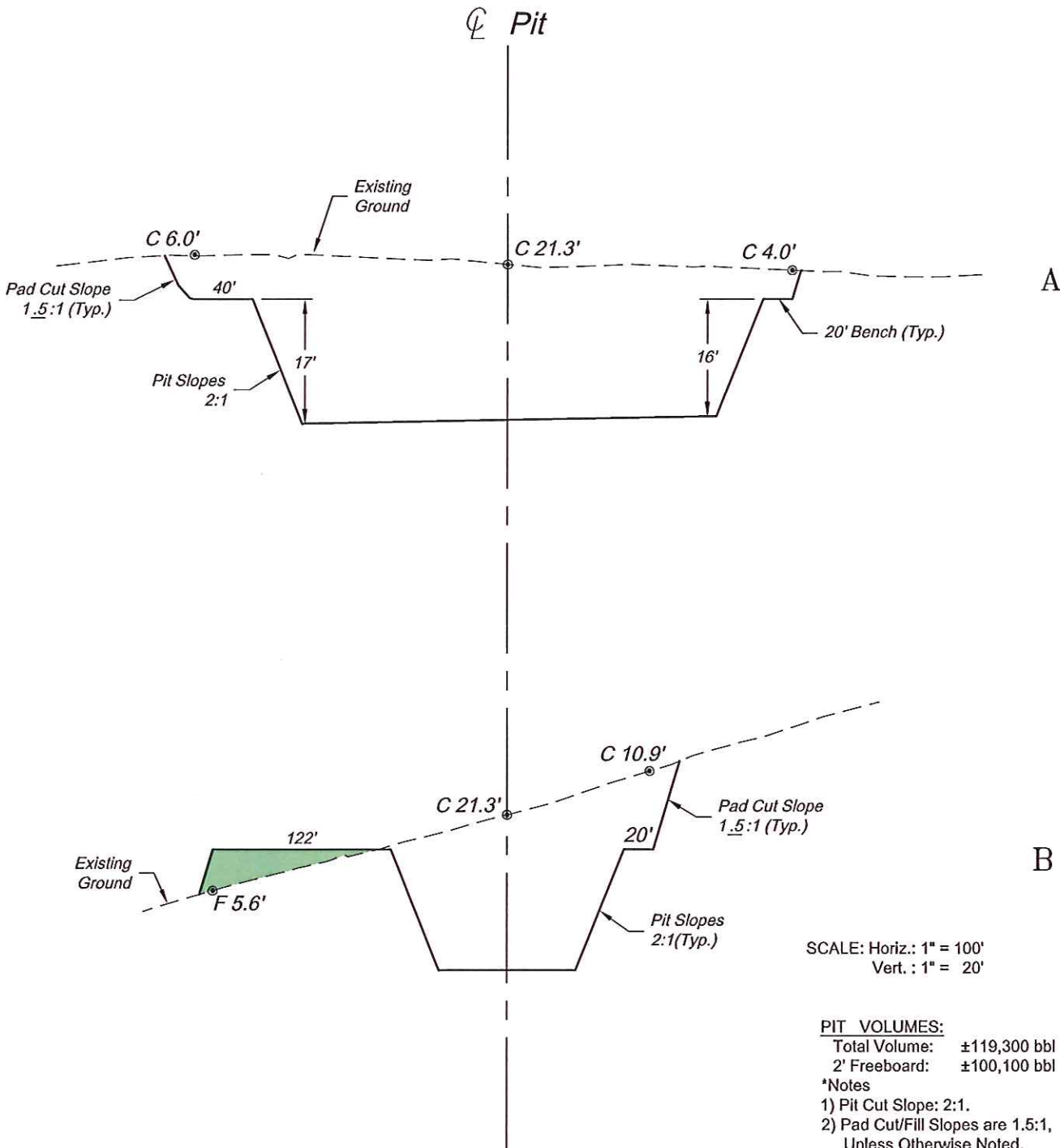
136 East Third Street
Rifle, Colorado 81650
Ph. (970) 625-2720
Fax (970) 625-2773



SCALE: 1" = 100'
DATE: 3/5/13
PLAT: 1 of 4
PROJECT: Highlands
DFT: cws

K32010 HIGHLANDS CENTRAL/UCJ 31-25-100 PRIME PG 2.dwg, 5/9/2013 9:02:11 AM

Section 25
 T. 1 S., R. 98 W.
 6th. P.M.



SCALE: Horiz.: 1" = 100'
 Vert.: 1" = 20'

PIT VOLUMES:
 Total Volume: ±119,300 bbl
 2' Freeboard: ±100,100 bbl
 *Notes
 1) Pit Cut Slope: 2:1.
 2) Pad Cut/Fill Slopes are 1.5:1,
 Unless Otherwise Noted.
 3) Pit Max. Depth 17'

REVISED: 5/8/13

136 East Third Street
 Rifle, Colorado 81650
 Ph. (970) 625-2720
 Fax (970) 625-2773

BOOKCLIFF
 Survey Services, Inc.

SCALE:	As Noted
DATE:	3/5/13
PLAT:	2 of 4
PROJECT:	Highlands
DFT:	cs

Construction Plan Prepared for:
WPXENERGY WPX Energy Rocky Mountain, LLC

NE Ryan Gulch Water Recycling Pit
 CROSS SECTIONS

K:\2010 HIGHLANDS CENTRAL\REGU 31-35-198 PRIME REG PR 2.dwg, 5/9/2013 9:02:54 AM