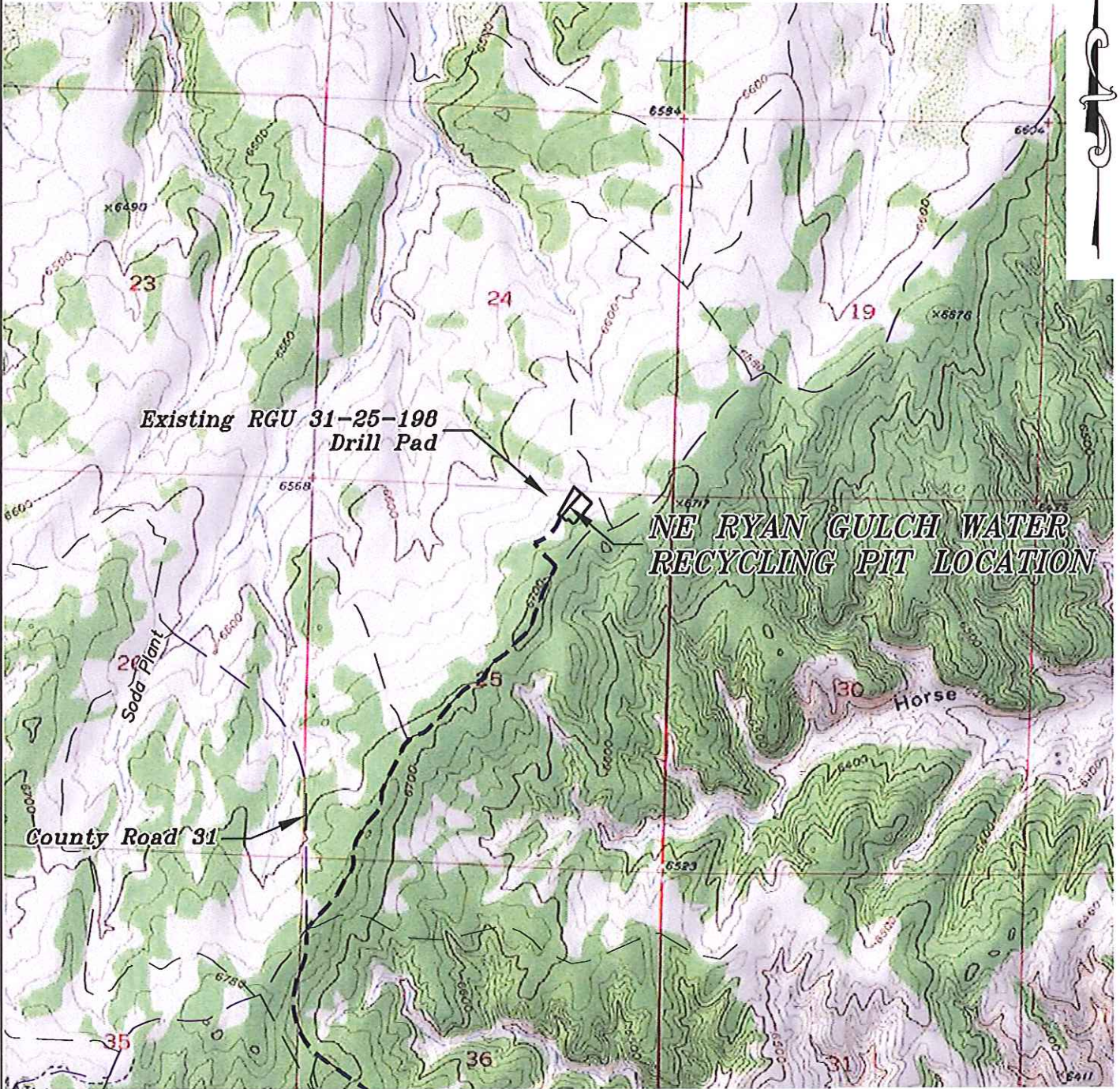


Section 25  
 T. 1 S., R. 98 W.  
 6th. P.M.

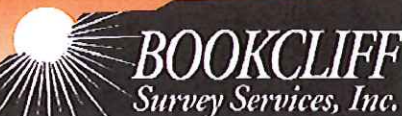


**ACCESS DESCRIPTION:**

FROM THE INTERSECTION OF STATE HIGHWAY 64 AND RIO BLANCO COUNTY ROAD 5 PROCEED SOUTHERLY ALONG COUNTY ROAD 5 ±14.5 MILES TO THE INTERSECTION WITH COUNTY ROAD 24, PROCEED RIGHT IN A WESTERLY DIRECTION ALONG COUNTY ROAD 24 ±1.8 MILES TO THE INTERSECTION WITH COUNTY ROAD 31, PROCEED RIGHT IN A NORTHERLY DIRECTION ON COUNTY ROAD 31 ±1.5 MILES TO AN INTERSECTION WITH A DIRT GRAVEL ROAD, PROCEED RIGHT IN AN NORTHEASTERLY DIRECTION ±1.2 MILES TO THE NE RYAN GULCH WATER RECYCLING PIT NEAR THE RGU 31-25-198 DRILL PAD LOCATION, AS SHOWN HEREON.

REVISED: 5/22/13

136 East Third Street  
 Rifle, Colorado 81650  
 Ph. (970) 625-2720  
 Fax: (970) 625-2773



SCALE: 1" = 2000'  
 DATE: 3/5/13  
 PLAT: 3 of 4  
 PROJECT: Highlands  
 DFT: cws

Construction Plan Prepared for:  
**WPXENERGY** WPX Energy Rocky Mountain, LLC

NE Ryan Gulch Water Recycling Pit  
 ACCESS ROAD & TOPO MAP