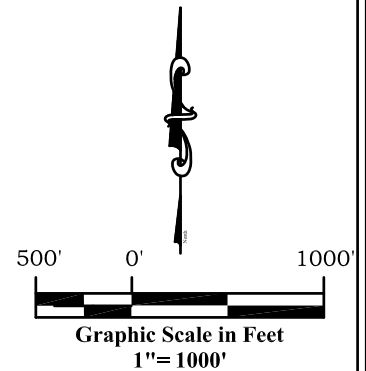
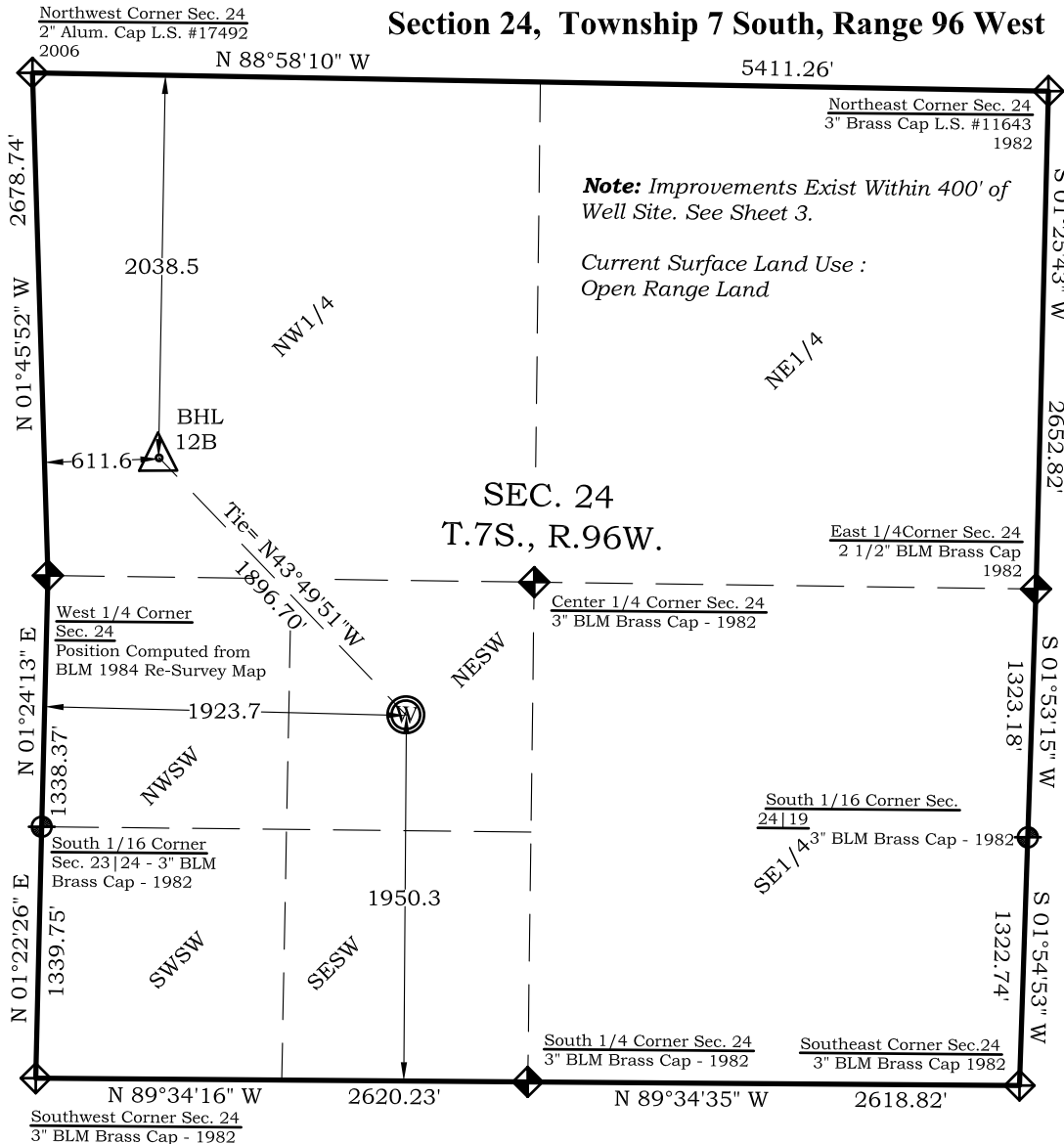


# Well Location Plat BAT 12B-24-07-96

Section 24, Township 7 South, Range 96 West



## Bottom Hole: BAT 12B-24-07-96

2038' FNL

612' FWL

NAD83

Lat: 39.424597180°N

Long: 108.065309244°W

NAD27

Lat: 39.424619001°N

Long: 108.064678200°W

## Surface: BAT 12B-24-07-96

1950' FSL

1924' FWL

Gnd El= 5183

Pad El= 5182.5

NAD83

Lat: 39.420967096°N

Long: 108.060500117°W

NAD27

Lat: 39.420988909°N

Long: 108.059869305°W

UTM 13 NORTH

NAD 1983

NORTHING

14330562.091

EASTING

776044.894

## Legend

- Field Surveyed Section Corner
- Field Surveyed Quarter Corner
- Calculated Section Corner Location
- Field Surveyed 1/6 Corner

## Notes:

- LATITUDE AND LONGITUDE COORDINATES ARE DIFFERENTIALLY CORRECTED AND BASED ON PUBLISHED NGS CONTROL STATION "KOEPSSELL". SYSTEM: UTM ZONE: 13 NORTH DATUM: NAD 1983 (CONUS)
- ELEVATIONS ARE BASED ON NAVD OF 1983.
- ALL BOTTOM AND TOP HOLE LOCATIONS ARE MEASURED 90 DEGREES FROM SECTION LINE.
- USGS QUADRANGLE MAP "PARACHUTE".
- CURRENT SURFACE LAND USE: HAY FIELD.
- PDOP AT THE TIME OF LOCATION OF SURFACE WELL = 2.4

Prepared For Ursa Operating Company, LLC  
Proposed BAT 12B-24-07-96 Well Situate in The  
NE 1/4 SW 1/4 Section 24, Township 7 South, Range 96 West  
of the 6 th. Principal Meridian, County of Garfield, State  
of Colorado.

## SURVEYOR'S CERTIFICATE

I, SCOTT E. AIBNER, A REGISTERED LAND SURVEYOR, LICENSED UNDER THE LAWS OF THE STATE OF COLORADO DO HEREBY CERTIFY THAT THE SURVEY SHOWN HEREON WAS PREPARED BY RIVER VALLEY SURVEY, INC., FOR URSA OPERATING COMPANY, LLC, IN MY PRESENCE OR UNDER MY DIRECT SUPERVISION AND THAT THIS PLAT IS A TRUE REPRESENTATION THEREOF.

SCOTT E. AIBNER  
PROFESSIONAL LAND SURVEYOR  
31143

BY: SCOTT E. AIBNER, COLORADO REG. NO. 31143



River Valley Survey, Inc.  
110 East 3rd. Street, Suite 213  
Rifle, Colorado 81650  
Ph: 970-379-7846

Project: Speakman A Pad

Field Date: 08-05-10

Date: 06-04-13

Scale: 1"= 1000'

Sheet: 1 of 11

Well Location Plat Prepared For:  
Ursa Operating Co., LLC

Situate In:  
SW 1/4 Section 24, T7S., R. 96 W. of the  
6th P.M., Garfield County, Colorado

