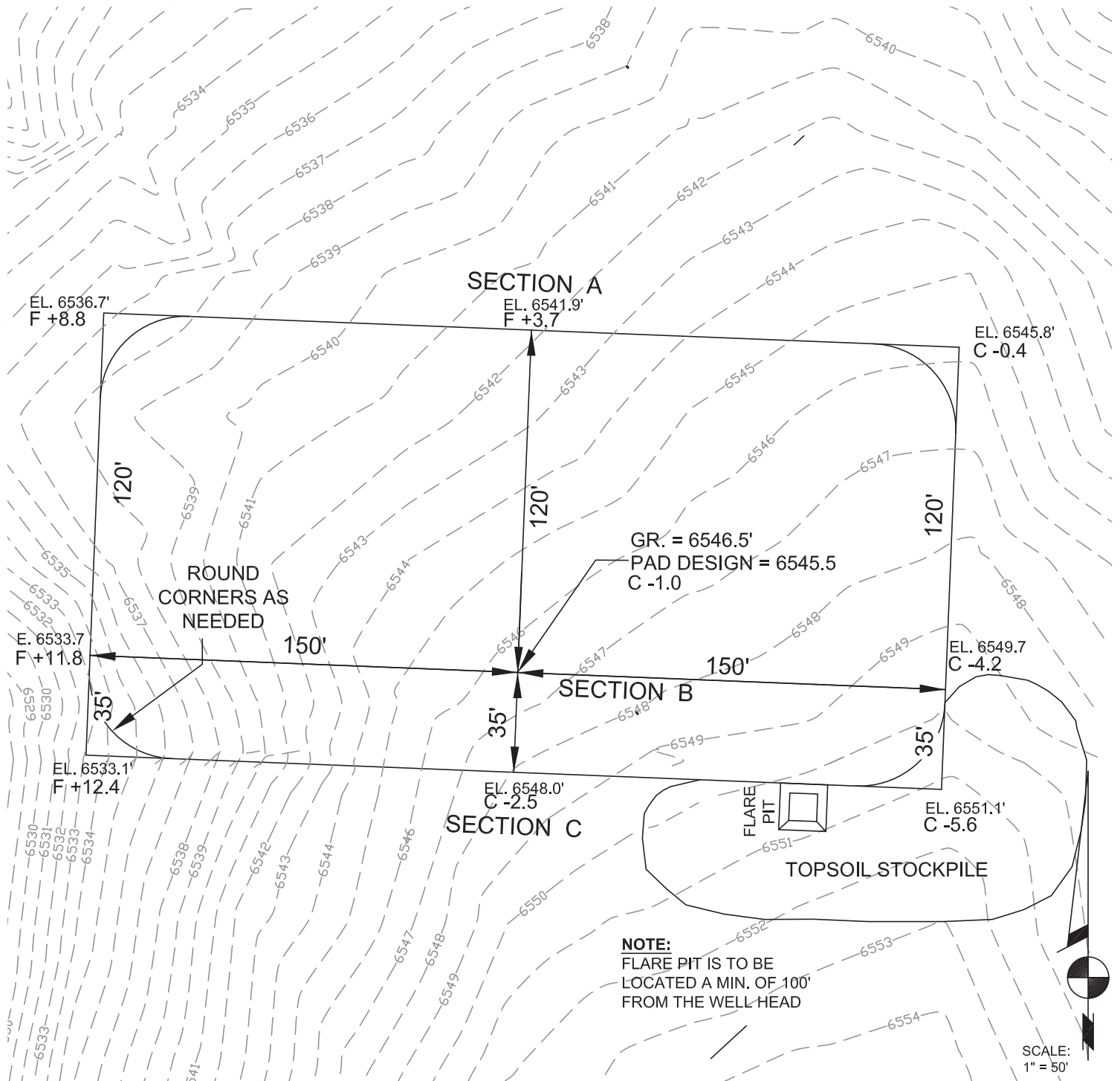


KGH OPERATING COMPANY

CONSTRUCTION LAYOUT FOR
KGH 14-2H MEAGHER
LOCATED IN RIO BLANCO COUNTY, COLORADO
SECTION 14, T1S, R104W, 6TH P.M.
1390' FNL & 2700' FWL



120 W. 84TH AVENUE
THORNTON, COLORADO 80260
PH. 303-702-1617
FAX. 303-702-1488
WWW.POWERSURVEYING.COM

CONSTRUCTION LAYOUT

SURVEYED BY: C. VAN MATRE
DRAWN BY: D. YOSHIDA
APPROVED BY: R. GABRIEL

REVISED:

SCALE:
1" = 50'

DATE:
3/26/13

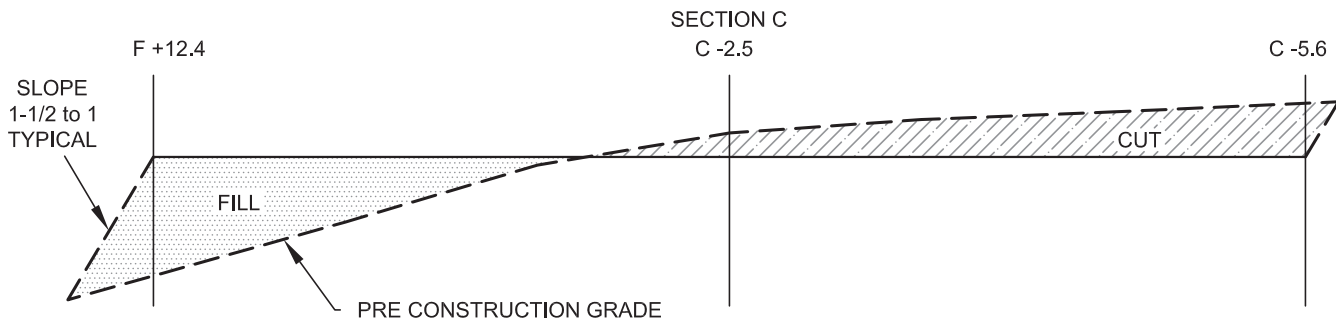
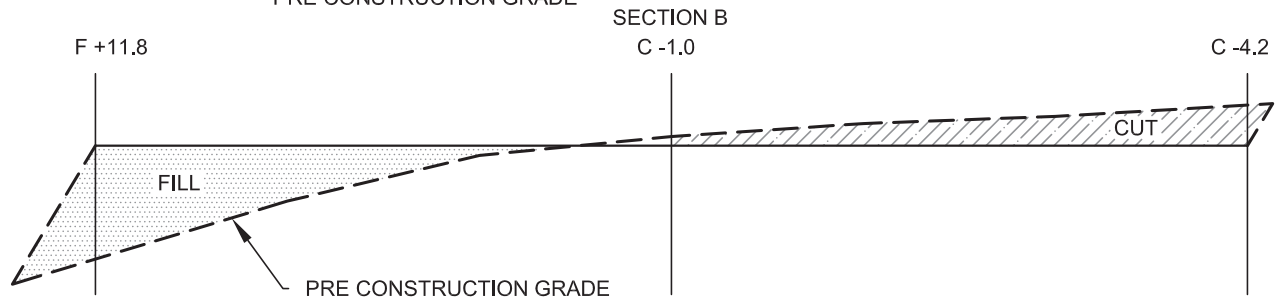
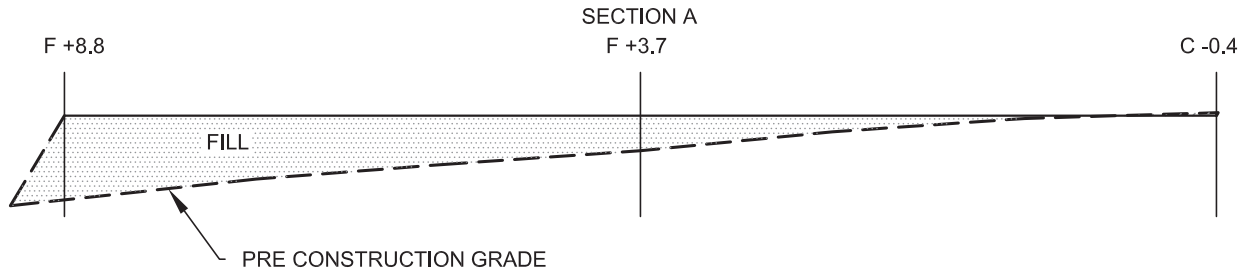
P6

KGH OPERATING COMPANY

CONSTRUCTION LAYOUT CROSS SECTIONS FOR
KGH 14-2H MEAGHER
LOCATED IN RIO BLANCO COUNTY, COLORADO
SECTION 14, T1S, R104W, 6TH P.M.
1390' FNL & 2700' FWL

FIGURE #2

1" = 20'
CROSS
SECTION
SCALE
1" = 50'



NOTE:
TOPSOIL SHOULD NOT BE
STRIPPED BELOW
FINISHED GRADE ON
SUBSTRUCTURE AREA.

APPROXIMATE YARDAGES
(6") TOPSOIL STRIPPING = 1,360 CU. YDS.
REMAINING LOCATION = -58 CU. YDS.
TOTAL CUT = 1,302 CU. YDS
FILL = 3,999 CU. YDS

APPROXIMATE ACREAGES
WELL SITE DISTURBANCE = ±1.1 ACRES
ACCESS ROAD DISTURBANCE = ± 0.135
ACRES
TOTAL = ±1.235 ACRES

EXCESS MATERIAL = 2,697 CU. YDS.
EXCESS UNBALANCE = 0 CU. YDS
(AFTER INTERIM REHABILITATION)



120 W. 84TH AVENUE PH. 303-702-1617
THORNTON, COLORADO 80260 FAX. 303-702-1488
WWW.POWERSURVEYING.COM

PAD CROSS SECTIONS

SURVEYED BY: C. VAN MATRE
DRAWN BY: D. YOSHIDA
APPROVED BY: R. GABRIEL

REVISED:

SCALE:
HORIZ = 1" = 50'
VERT = 1" = 20'

DATE:
3/26/13

P7

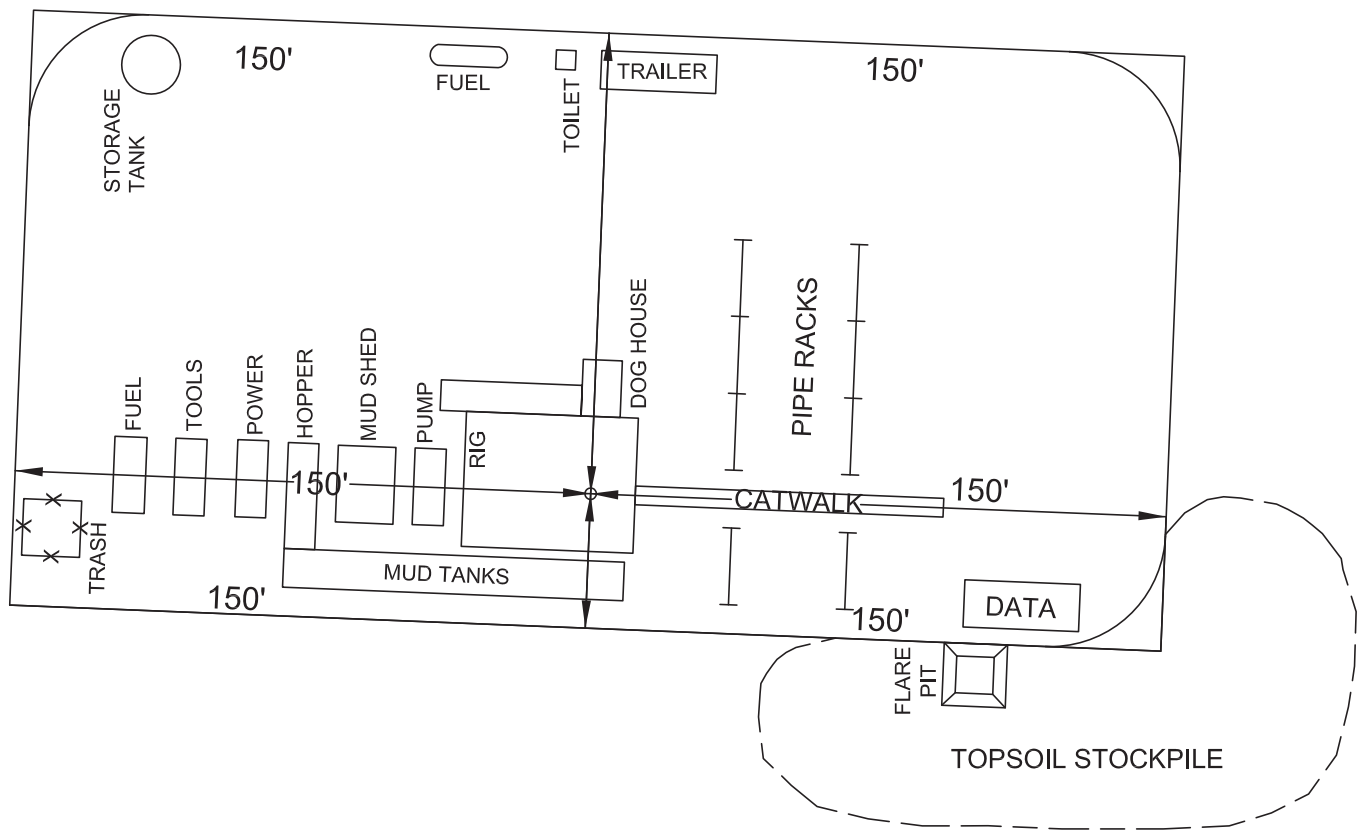
KGH OPERATING COMPANY

TYPICAL RIG LAYOUT FOR
KGH 14-2H MEAGHER
LOCATED IN RIO BLANCO COUNTY, COLORADO
SECTION 14, T1S, R104W, 6TH P.M.
1390' FNL & 2700' FWL

FIGURE #3



SCALE:
1" = 50'



120 W. 84TH AVENUE
THORNTON, COLORADO 80260
PH. 303-702-1617
FAX. 303-702-1488
WWW.POWERSURVEYING.COM

TYPICAL RIG LAYOUT

SURVEYED BY: C. VAN MATRE
DRAWN BY: D. YOSHIDA
APPROVED BY: R. GABRIEL

REVISED:

SCALE:
1" = 50'

DATE:
3/26/13

P8