

WELLBORE DIAGRAM

Bayswater E&P LLC

Booth 24-26

NWNE Sec 26-T7N-R65W

SHL: 505' FNL, 2316' FEL

BHL: 2644' FNL, 1224' FEL

Weld County CO

05-123-36077

Updated

12/04/12

MMA

Directions:

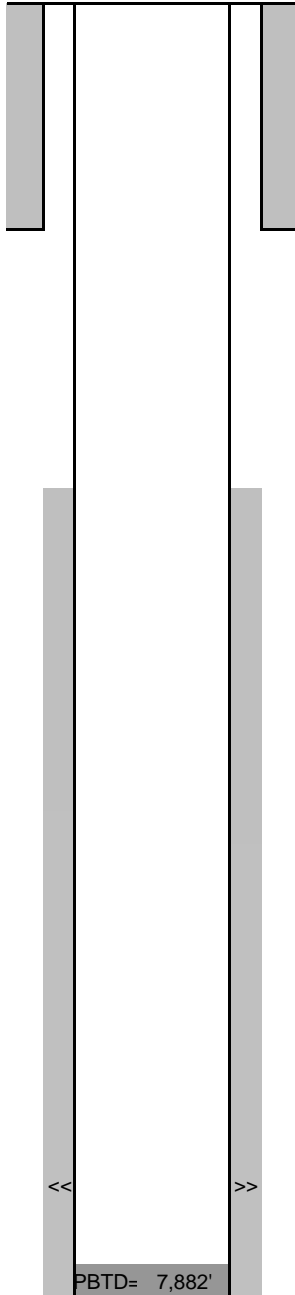
Hwy 85 N to Hwy 392, W to

WCR 27, N to WCR 74,

1.25 mi W, N into

G.L.= 4893

K.B.= 4909
16



8-5/8" 24# set at 733' (12-1/4" hole)
Cmt'd w/ 270 sx to Surf.

TOC: 1420'
CBL

<< >> **Codell:** 7746'-7759', 4 spf

Frac on 12/04/12, with 299,628 gals Slickwater and 180,960 lbs. 30/50 White

4-1/2" 11.6# CSG @ 7905' (7-7/8" O.H.)

Cmt'd w/ 220 sx lead, 11 ppg; 450 sx middle, 12.5 ppg; 230 sx tail, 14.6 ppg

TD MD= 7,920'

TD TVD= 7,365'