

WELLBORE DIAGRAM

Bayswater E&P LLC
Booth 21-26

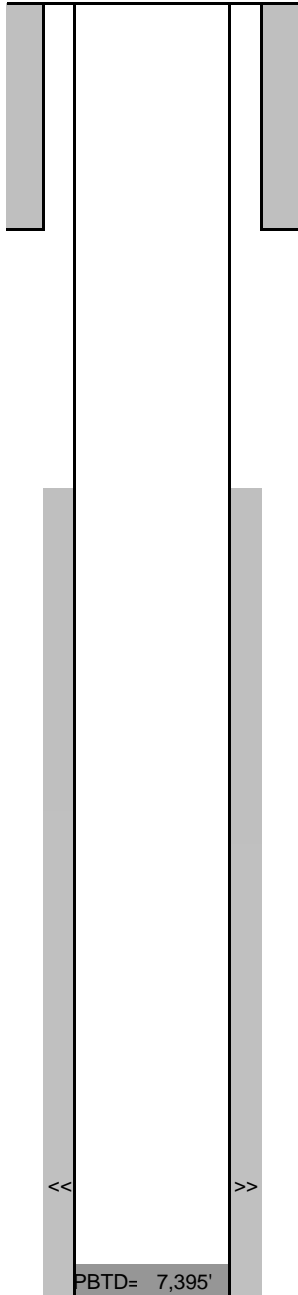
NWNE Sec 26-T7N-R65W
SHL: 545' FNL, 2347' FEL
BHL: 1359' FNL, 2540' FEL
Weld County CO
05-123-36078

Updated
11/30/12
CHR

Directions:
CR 78 & CR 45, North 0.25
mi, East around horse
corral, South through field,
East into

G.L.= 4894
K.B.= 4910

16



8-5/8" 24# set at 712' (12-1/4" hole)
Cmt'd w/ 263 sx to Surf.

TOC: 1418'
CBL

<< >> **Codell: 7288'-7302', 4 spf**
Frac on 11/30/12, with 272,244 gals Slickwater and 166,578 lbs. 30/50 White

PBTD= 7,395'
TD MD= 7,440'
TD TVD= 7,360'

4-1/2" 11.6# CSG @ 7422' (7-7/8" O.H.)
Cmt'd w/ 194 sx lead, 11 ppg; 423 sx middle, 12.5 ppg; 237 sx tail, 14.6 ppg