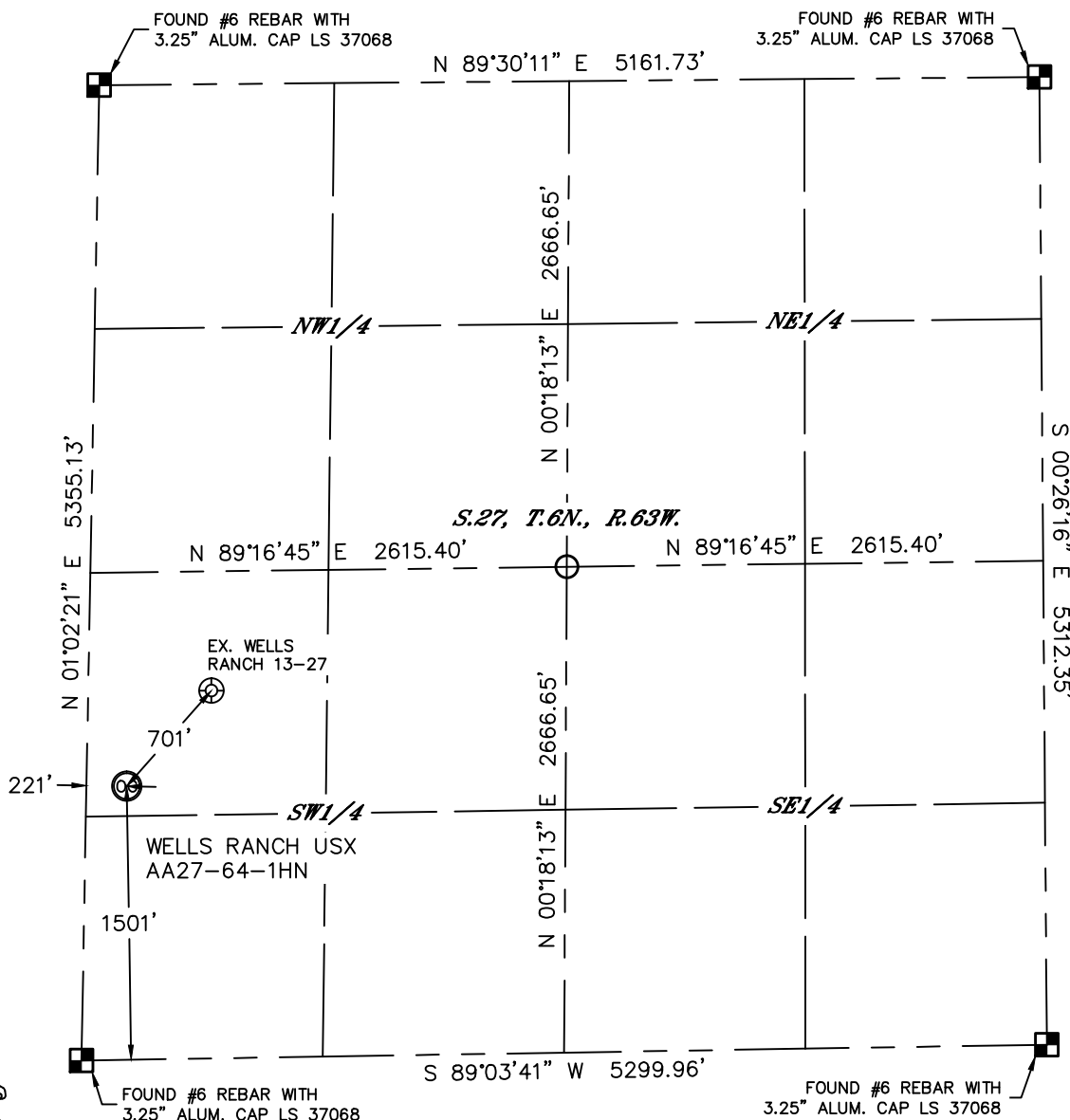


WELL LOCATION CERTIFICATE

THIS MAP DOES NOT REPRESENT A BOUNDARY SURVEY

SECTION: 27
TOWNSHIP: 6N
RANGE: 63W



In accordance with a request from CJ Pietri with Noble Energy Inc. Lat40°, Inc. has determined the pilot hole location of the WELLS RANCH USX AA27-64-1HN to be 1501' from the SOUTH line and 221' from the WEST line as measured at right angles from the section lines of Section 27, Township 6 North, Range 63 West of the Sixth Principal Meridian, County of Weld, State of Colorado.

I hereby state that this Well Location Certificate was prepared by me, or under my direct supervision, that the fieldwork was completed on 6/7/2012, for and on behalf of Noble Energy Inc. That this is not a Land Survey Plat or an Improvement Survey Plat, and that it is not to be relied upon for establishment of fence, building, or other future improvement lines.

SURFACE LOCATION

LAT: 40.45430°N
LONG: 104.43178°W
PDOP: 1.7
ELEV: 4794'
1/4, 1/4: NW1/4SW1/4
NEAREST PROPERTY LINE: 221' WEST



NOTE:

- 1) Bearings shown are Grid Bearings of the Colorado State Plane Coordinate System, North Zone, North American Datum 1983/2007. The lineal dimensions as contained herein are based upon the "U.S. Survey Foot."
- 2) Ground elevations are based on an observed GPS elevation (NAVD 1988 DATUM).
- 3) NEAREST EXISTING WELL: WELLS RANCH 13-27, 701'
- 4) IMPROVEMENTS: See LOCATION DRAWING for all visible improvements within 400' of disturbed area.
- 5) SURFACE USE: RANGELAND
- 6) INSTRUMENT OPERATOR: ADAM KELLY

NOTE

According to Colorado law, you must commence any legal action based upon any defect in this W.L.C. within three years after you discover such defect. In no event, may any action based upon any defect in this survey be commenced more than ten years after the date of the certificate shown hereon. (13-80-105 C.R.S.)

LEGEND

- = ALIQUOT MONUMENT AS DESCRIBED
 = CALCULATED POSITION

Brian T. Brinkman—On behalf of Lat40°, Inc.

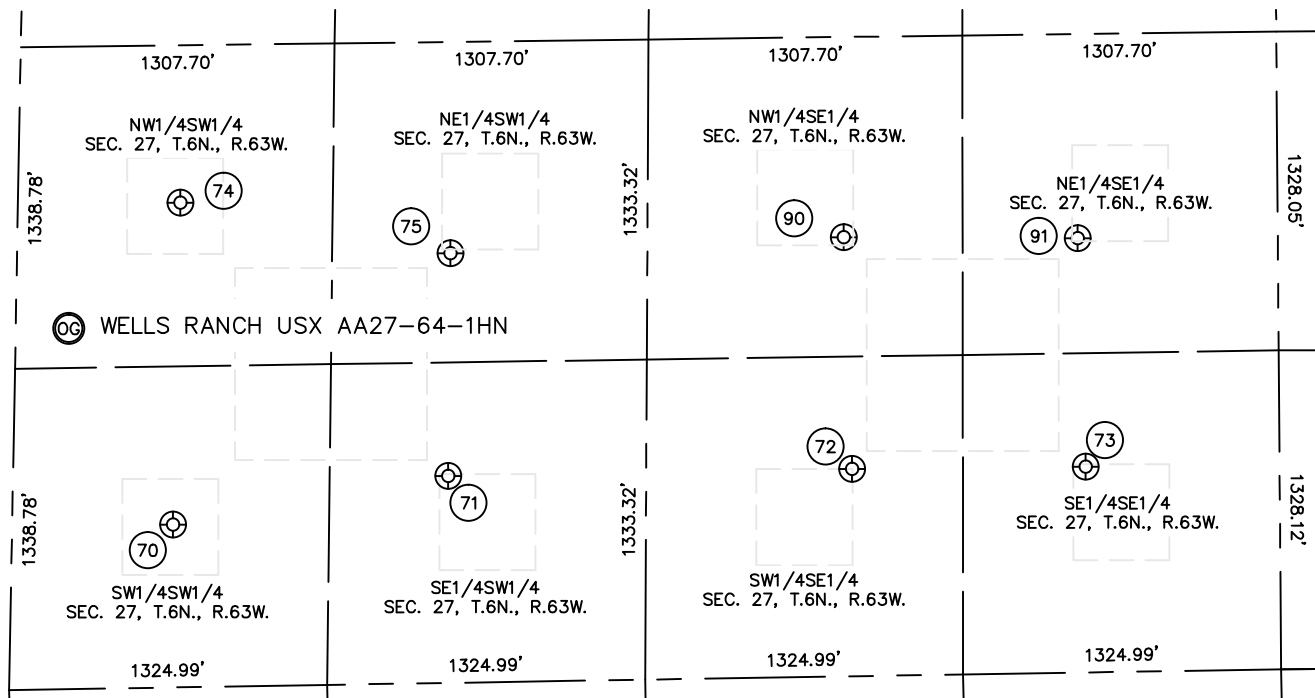
Colorado Licensed Professional
Land Surveyor No. 38175

DATE: rev6/11/2013
PROJECT#: 2012075

SITE SKETCH

WELLS RANCH USX AA27-64-1HN

SECTION: 27
TOWNSHIP: 6N
RANGE: 63W



70

WELLS RANCH 14-27
SW1/4SW1/4
678' FSL
682' FWL
LAT-40.45205°N
LONG-104.43026°W
PDOP: 1.3
ELEV: 4800'

71

WELLS RANCH 24-27
SE1/4SW1/4
861' FSL
1828' FWL
LAT-40.45257°N
LONG-104.42613°W
PDOP: 2.0
ELEV: 4832'

72

WELLS RANCH 34-27
SW1/4SE1/4
864' FSL
1781' FEL
LAT-40.45259°N
LONG-104.42009°W
PDOP: 1.6
ELEV: 4822'

73

WELLS RANCH 44-27
SE1/4SE1/4
857' FSL
808' FEL
LAT-40.45259°N
LONG-104.41659°W
PDOP: 1.3
ELEV: 4846'

74

WELLS RANCH 13-27
NW1/4SW1/4
2018' FSL
676' FWL
LAT-40.45573°N
LONG-104.43009°W
PDOP: 2.2
ELEV: 4816'

75

WELLS RANCH 23-27
NE1/4SW1/4
1789' FSL
1805' FWL
LAT-40.45511°N
LONG-104.42606°W
PDOP: 2.2
ELEV: 4827'

90

WELLS RANCH 33-27
NW1/4SE1/4
1829' FSL
1809' FEL
LAT-40.45524°N
LONG-104.42017°W
PDOP: 1.6
ELEV: 4823'

91

WELLS RANCH 43-27
NE1/4SE1/4
1809' FSL
834' FEL
LAT-40.45520°N
LONG-104.41667°W
PDOP: 1.6
ELEV: 4838'

