

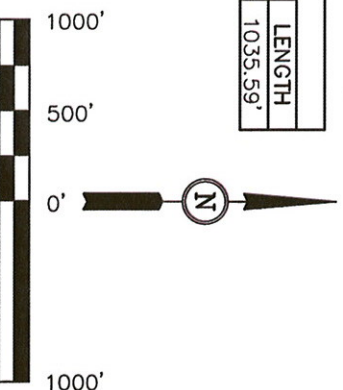
WEYBRO COMPANY

BASIS OF ELEVATION

BASIS OF BEARINGS

BASIS OF BEARINGS IS A G.P.S. OBSERVATION

LINE TABLE		
LINE	DIRECTION	LENGTH
L1	S70°21'55"E	1035.59'



CERTIFICATE

THIS IS TO CERTIFY THAT THE ABOVE PLAN WAS PREPARED FROM FIELD NOTES OF ACTUAL SURVEYS MADE BY ME OR UNDER MY SUPERVISION AND THAT THE SAME ARE TRUE AND CORRECT TO THE BEST OF MY KNOWLEDGE AND BELIEF.

REGISTERED LAND SURVEYOR
REGISTRATION NO. 17492
STATE OF COLORADO

REVISÉD: 11-28-11 S.L.

UNTAH ENGINEERING & LAND SURVEYING
85 SOUTH 200 EAST - VERNAL, UTAH 84078

(435) 789-1017

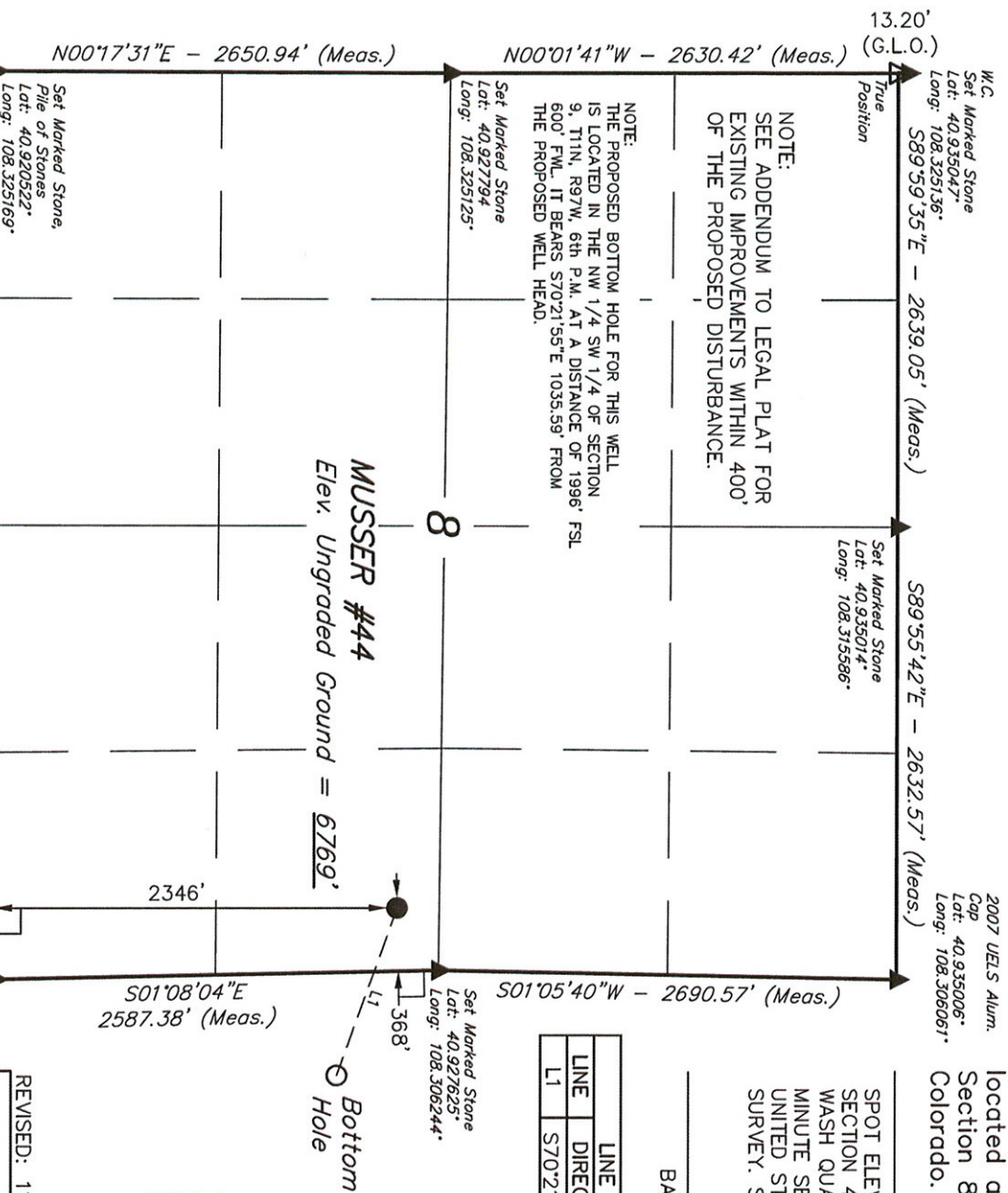
PDOP = 1.1

SCALE 1" = 1000'	DATE SURVEYED: 07-21-10	DATE DRAWN: 08-31-10
---------------------	----------------------------	-------------------------

= 90° SYMBOL

= PROPOSED WELL HEAD.

= SECTION CORNERS LOCATED.



NOTE:
SEE ADDENDUM TO LEGAL PLAT FOR
EXISTING IMPROVEMENTS WITHIN 400'
OF THE PROPOSED DISTURBANCE.

NOTE: THE PROPOSED BOTTOM HOLE FOR THIS WELL IS LOCATED IN THE NW 1/4 SW 1/4 OF SECTION 9, T11N, R37W, 6th P.M. AT A DISTANCE OF 1396' FSL 600' FWL. IT BEARS S70°21'55"E 1035.59' FROM THE PROPOSED WELL HEAD.

MUSSEY #44
Elev. Ungraded Ground = 6769'

2346'

501°08'04"E
2587.38' (Meas.)

Bottom
Hole

LEGEND:

T11N, R97W, 6th P.M.

WEXPRO COMPANY

Well location, MUSSER #44 (TARGET BOTTOM HOLE), located as shown in the NW 1/4 SW 1/4 of Section 9, T11N, R97W, 6th P.M., Moffat County, Colorado.

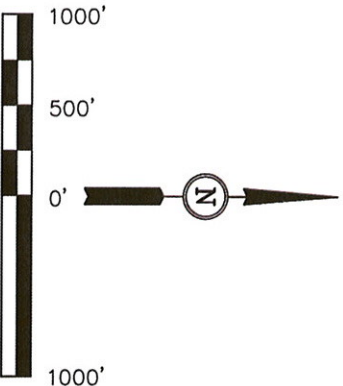
BASIS OF ELEVATION

SPOT ELEVATION LOCATED AT THE SOUTHEAST CORNER OF SECTION 4, T11N, R97W, 6th P.M. TAKEN FROM THE POWDER WASH QUADRANGLE, COLORADO, MOFFAT COUNTY, 7.5 MINUTE SERIES (TOPOGRAPHICAL MAP) PUBLISHED BY THE UNITED STATES DEPARTMENT OF THE INTERIOR, GEOLOGICAL SURVEY. SAID ELEVATION IS MARKED AS BEING 6644 FEET.

BASIS OF BEARINGS

BASIS OF BEARINGS IS A G.P.S. OBSERVATION.

Set Marked Stone,
Steel Post 3' NW
of Stone
Lat: 40.927889
Long: 108.287014



CERTIFICATE

THIS IS TO CERTIFY THAT THE ABOVE PLAT WAS PREPARED FROM FIELD NOTES OF ACTUAL SURVEYS MADE BY ME OR UNDER MY SUPERVISION AND THAT THE SAME ARE TRUE AND CORRECT TO THE BEST OF MY KNOWLEDGE AND BELIEF.

REGISTERED LAND SURVEYOR
REGISTRATION NO. 17492
STATE OF COLORADO
9-28-11

REVISED: 11-28-11 S.L.

UTAH ENGINEERING & LAND SURVEYING
85 SOUTH 200 EAST - VERNAL, UTAH 84078
(435) 789-1017

SCALE 1" = 1000'
DATE SURVEYED: 07-21-10
DATE DRAWN: 08-31-10

PARTY D.K. J.D. C.H.
REFERENCES G.L.O. PLAT

WEATHER WARM
FILE WEXPRO COMPANY

2007 UELS Alum.
Cap
Lat: 40.935006°
Long: 108.306061°

S89°44'38"W - 2636.04' (Meas.)

S89°46'50"W - 2626.53' (Meas.)

Set Marked Stone,
Pile of Stones,
Steel Post
Lat: 40.935039
Long: 108.296525

Set Marked Stone,
Pile of Stones,
Steel Post
Lat: 40.935067
Long: 108.287022

NOTE:
THE PROPOSED BOTTOM HOLE FOR THIS WELL
BEARS S70°21'55"E 1035.59' FROM THE
PROPOSED WELL HEAD.

Surface
Location

Set Marked Stone
Lat: 40.927625°
Long: 108.306244°

MUSSER #44
TARGET BOTTOM HOLE

1996'

S01°08'04"E - 2587.38' (Meas.)

S01°05'40"W - 2690.57' (Meas.)

2010 UELS Alum. N89°50'32"E - 2604.51' (Meas.)

Cap
Lat: 40.920528°
Long: 108.306058°

Set Marked Stone,
Pile of Stones
Lat: 40.920547°
Long: 108.296636°

Set Marked Stone
Lat: 40.920600°
Long: 108.287078°

N00°23'13"E - 2656.91' (Meas.)

N00°03'04"W - 2616.53' (Meas.)

LEGEND:

● = 90° SYMBOL

● = PROPOSED WELL HEAD.

▲ = SECTION CORNERS LOCATED.

LINE TABLE		
LINE	DIRECTION	LENGTH
L1	S70°21'55"E	1035.59'

NAD 83 (TARGET BOTTOM HOLE)

LATITUDE = 40°55'33.63" (40.926008)

LONGITUDE = 108°18'14.51" (108.304031)

NAD 27 (TARGET BOTTOM HOLE)

LATITUDE = 40°55'33.76" (40.926044)

LONGITUDE = 108°18'12.17" (108.303381)