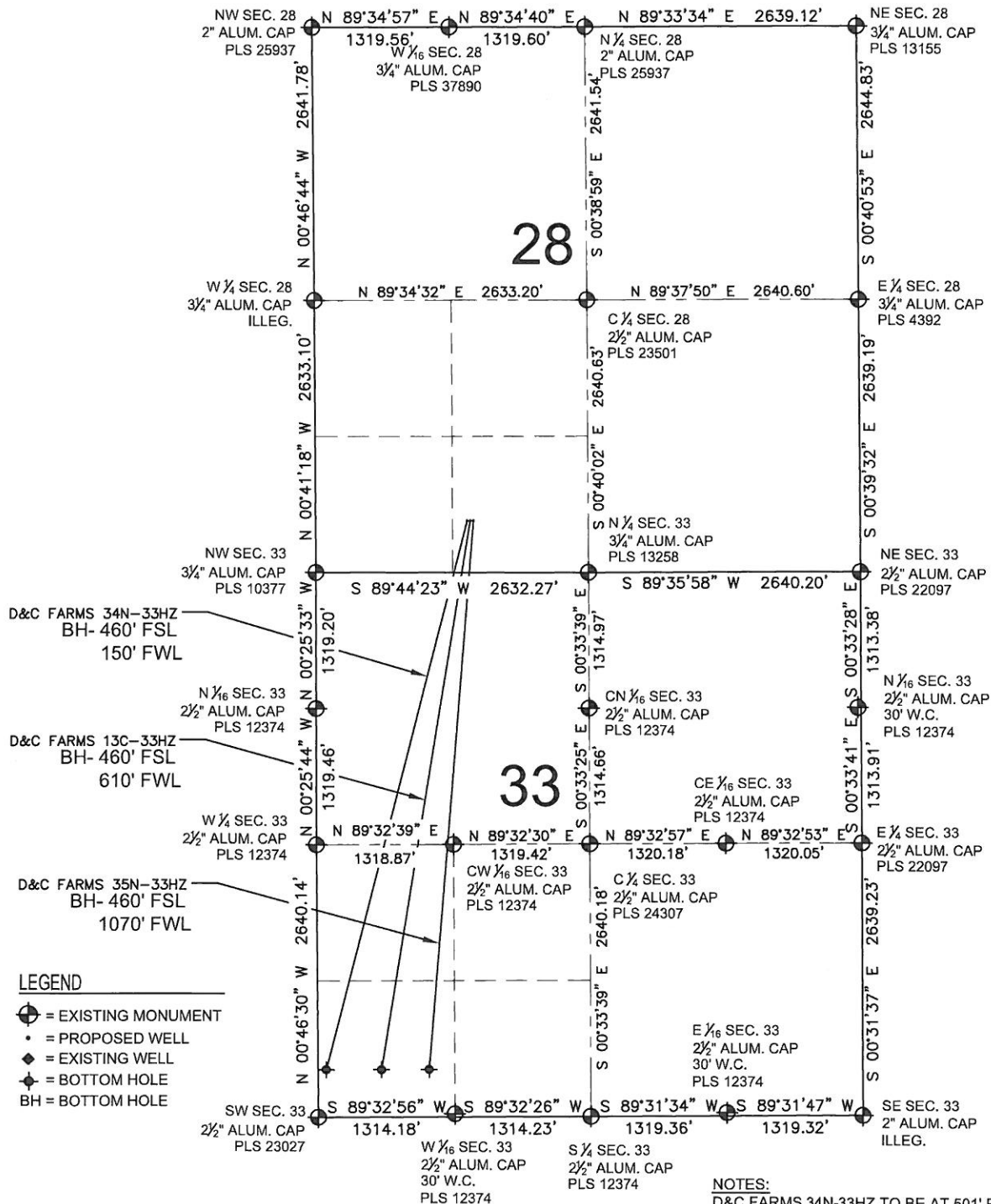


D&C FARMS 13C-33HZ MULTI-WELL PLAN

SECTION 28, TOWNSHIP 1 NORTH, RANGE 67 WEST, 6TH P.M.



PREPARED BY:

PFS

Petroleum Field Services, LLC
1801 W. 13th Ave.
Denver, CO 80204



KERR-MCGEE OIL & GAS ONSHORE LP

FIELD DATE:
02-15-13

DRAWING DATE:
05-18-13

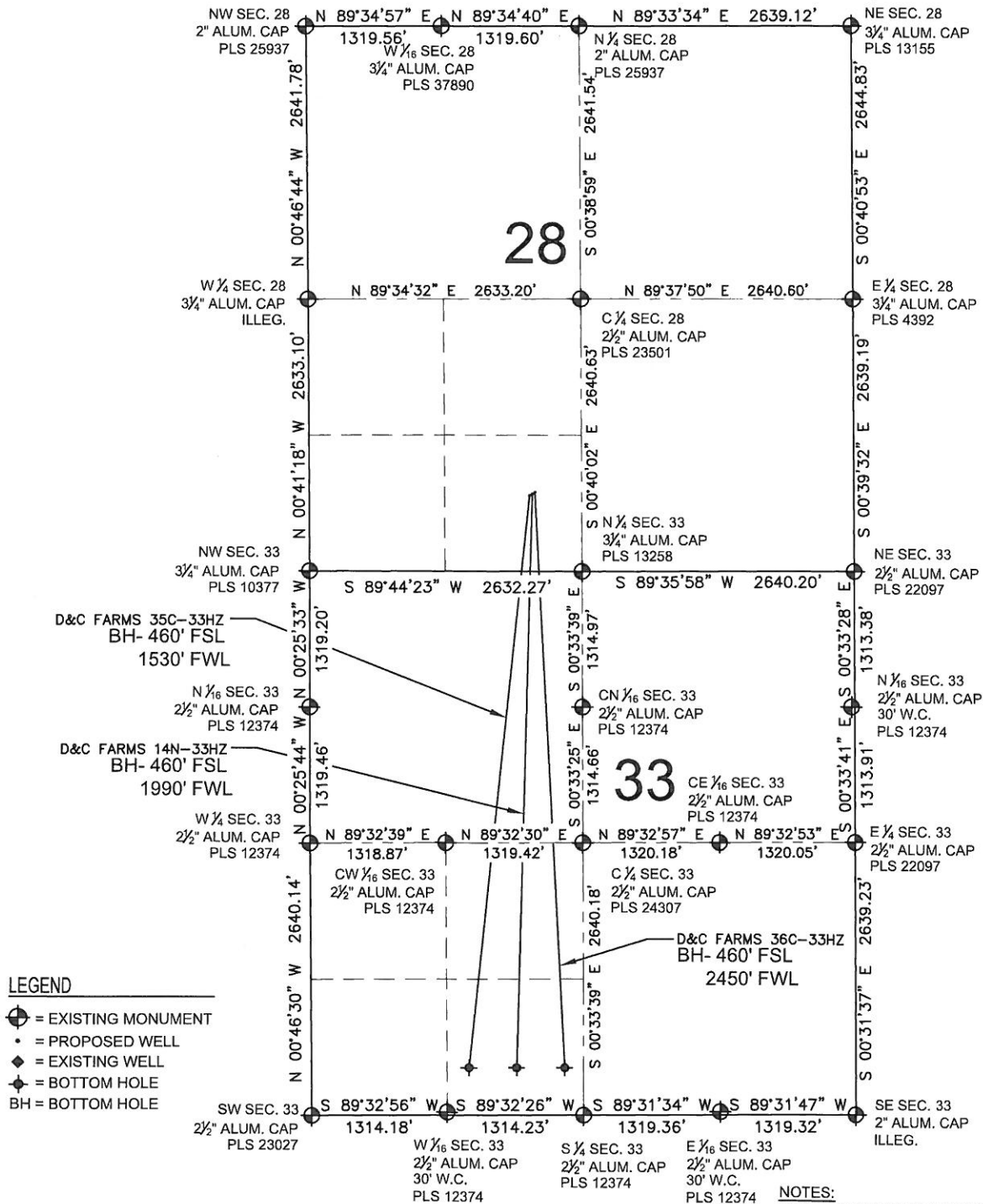
SURFACE LOCATION:

SE 1/4 SW 1/4, SEC. 28, T1N, R67W, 6TH P.M.
WELD COUNTY, COLORADO



D&C FARMS 14N-33HZ MULTI-WELL PLAN

SECTION 28, TOWNSHIP 1 NORTH, RANGE 67 WEST, 6TH P.M.



PREPARED BY:



KERR-MCGEE OIL & GAS ONSHORE LP

FIELD DATE:
02-15-13

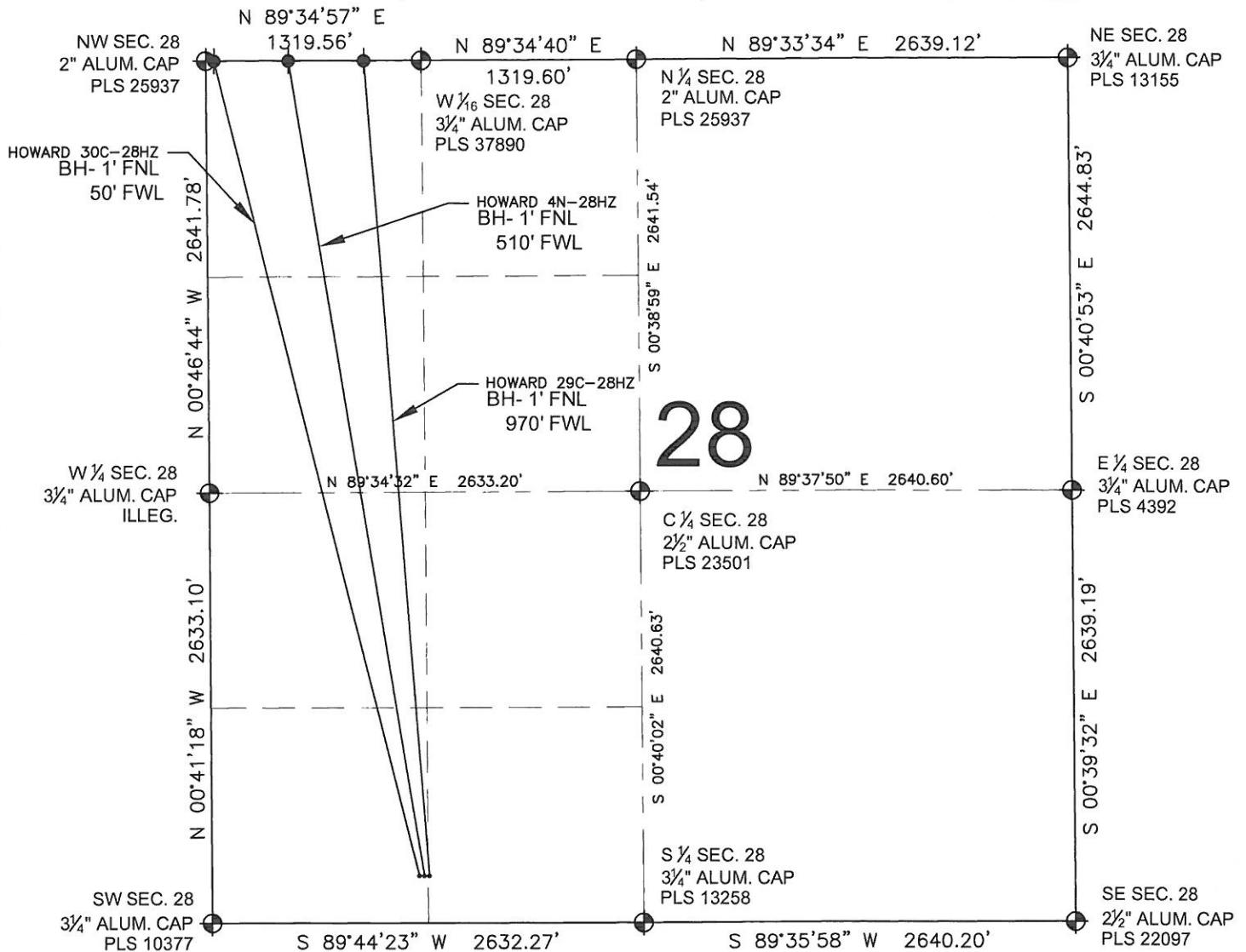
DRAWING DATE:
05-19-13

SURFACE LOCATION:

SE 1/4 SW 1/4, SEC. 28, T1N, R67W, 6TH P.M.
WELD COUNTY, COLORADO

HOWARD 4N-28HZ MULTI-WELL PLAN

SECTION 28, TOWNSHIP 1 NORTH, RANGE 67 WEST, 6TH P.M.



NOTES:

HOWARD 30C-28HZ TO BE AT 290' FSL, 1264' FWL.
 BOTTOM HOLE AT 1' FNL & 50' FWL.
 HOWARD 4N-28HZ TO BE AT 290' FSL, 1294' FWL.
 BOTTOM HOLE AT 1' FNL & 510' FWL.
 HOWARD 29C-28HZ TO BE AT 289' FSL, 1324' FWL.
 BOTTOM HOLE AT 1' FNL & 970' FWL.

LEGEND

⊕ = EXISTING MONUMENT ⊕ = BOTTOM HOLE BH= BOTTOM HOLE
 • = PROPOSED WELL ♦ = EXISTING WELL

PREPARED BY:

PFS

Petroleum Field Services, LLC
 1801 W. 13th Ave.
 Denver, CO 80204

KERR-MCGEE OIL & GAS ONSHORE LP

FIELD DATE:
02-15-13

DRAWING DATE:
05-14-13

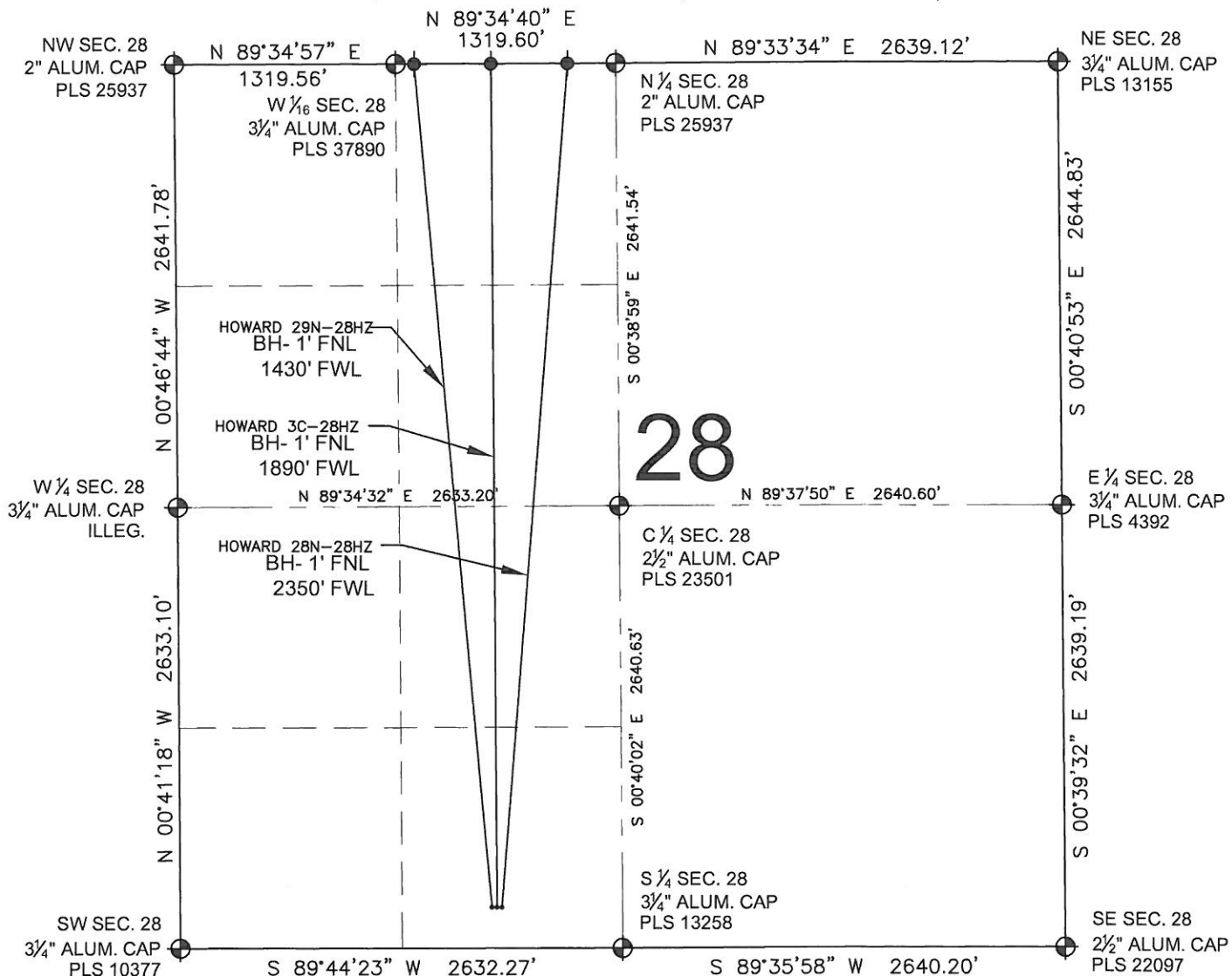
SURFACE LOCATION:

SE 1/4 SW 1/4, SEC. 28, T1N, R67W, 6TH P.M.
 WELD COUNTY, COLORADO



HOWARD 3C-28HZ MULTI-WELL PLAN

SECTION 28, TOWNSHIP 1 NORTH, RANGE 67 WEST, 6TH P.M.



NOTES:

HOWARD 29N-28HZ TO BE AT 246' FSL, 1852' FWL.
BOTTOM HOLE AT 1' FNL & 1430' FWL.
HOWARD 3C-28HZ TO BE AT 246' FSL, 1882' FWL.
BOTTOM HOLE AT 1' FNL & 1890' FWL.
HOWARD 28N-28HZ TO BE AT 245' FSL, 1912' FWL.
BOTTOM HOLE AT 1' FNL & 2350' FWL.

LEGEND

⊕ = EXISTING MONUMENT ♦ = BOTTOM HOLE BH= BOTTOM HOLE
• = PROPOSED WELL ◆ = EXISTING WELL

PREPARED BY:

PFS

Petroleum Field Services, LLC
1801 W. 13th Ave.
Denver, CO 80204

KERR-MCGEE OIL & GAS ONSHORE LP

FIELD DATE:
02-15-13

DRAWING DATE:
05-14-13

SURFACE LOCATION:

SE 1/4 SW 1/4, SEC. 28, T1N, R67W, 6TH P.M.
WELD COUNTY, COLORADO

