

1996, Private Alum. Cap,  
0.1' Above Ground,  
LS30127,  
Lat: 39.652208°  
Long: 104.565967°

# WELL LOCATION PLAT

## T5S, R64W, 6th P.M.

ConocoPhillips Company

Well location, TEBO #4-1H, located as shown in SW 1/4 SW 1/4 of Section 4, T5S, R64W, 6th P.M., Arapahoe County, Colorado.

### BASIS OF ELEVATION

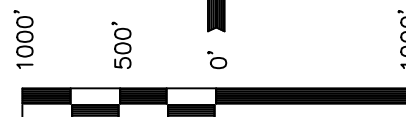
BENCHMARK 374 LOCATED ON THE SECTION LINE BETWEEN SECTIONS 12 & 13, T5S, R64W, 6th. P.M., TAKEN FROM 1988 PUBLISHED DATUM BY THE UNITED STATES DEPARTMENT OF THE INTERIOR, GEOLOGICAL SURVEY AS BEING 6054.61 FEET.

### BASIS OF BEARINGS

BASIS OF BEARINGS IS A G.P.S. OBSERVATION.

### LINE TABLE

LINE	DIRECTION	LENGTH
L1	S01°24'55"W	241.01'



SCALE

### CERTIFICATE

THIS IS TO CERTIFY THAT THE ABOVE PLAT WAS PREPARED FROM FIELD NOTES OF ACTUAL SURVEYS MADE BY ME OR UNDER MY SUPERVISION AND THAT THE SAME ARE TRUE AND CORRECT TO THE BEST OF MY KNOWLEDGE AND BELIEF.

REGISTERED LAND SURVEYOR  
REGISTRATION NO. 17492  
STATE OF COLORADO

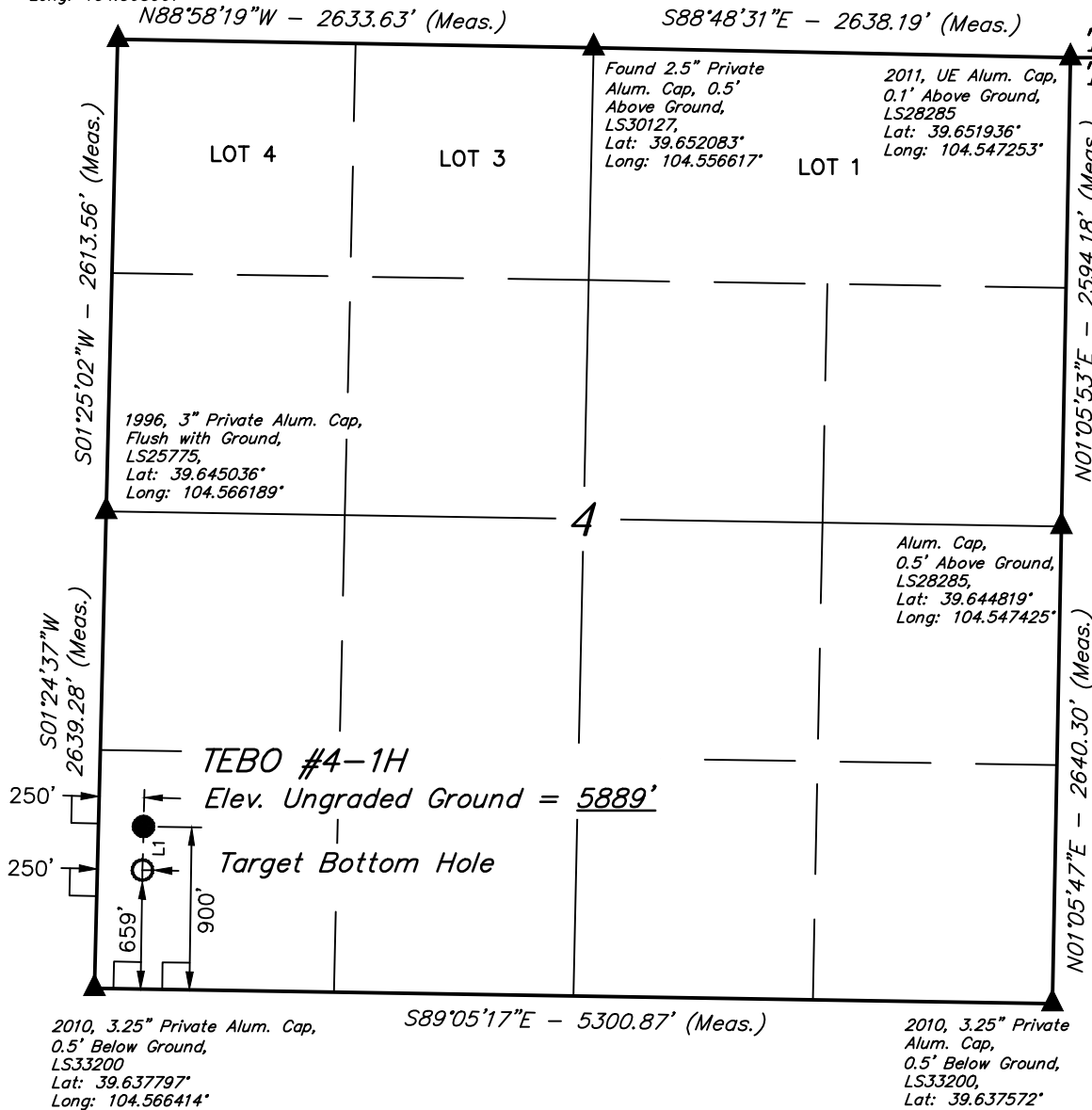
08-10-13

**UINTAH ENGINEERING & LAND SURVEYING**  
85 SOUTH 200 EAST - VERNAL, UTAH 84078  
(435) 789-1017

PDOP = 1.9

NAD 83 (TARGET BOTTOM HOLE)	NAD 83 (SURFACE LOCATION)
LATITUDE = 39°38'22.54" (39.639594)	LATITUDE = 39°38'24.92" (39.640256)
LONGITUDE = 104°33'55.69" (104.565469)	LONGITUDE = 104°33'55.62" (104.565450)
NAD 27 (TARGET BOTTOM HOLE)	NAD 27 (SURFACE LOCATION)
LATITUDE = 39°38'22.59" (39.639608)	LATITUDE = 39°38'24.97" (39.640269)
LONGITUDE = 104°33'53.81" (104.564947)	LONGITUDE = 104°33'53.74" (104.564928)

SCALE 1" = 1000'	DATE SURVEYED: 02-27-12	DATE DRAWN: 06-10-13
PARTY Z.B. A.G. J.W.	REFERENCES G.L.O. PLAT	
WEATHER COLD	FILE ConocoPhillips Company	



### LEGEND:

- └─┘ = 90° SYMBOL
- = PROPOSED WELL HEAD.
- ▲ = SECTION CORNERS LOCATED.