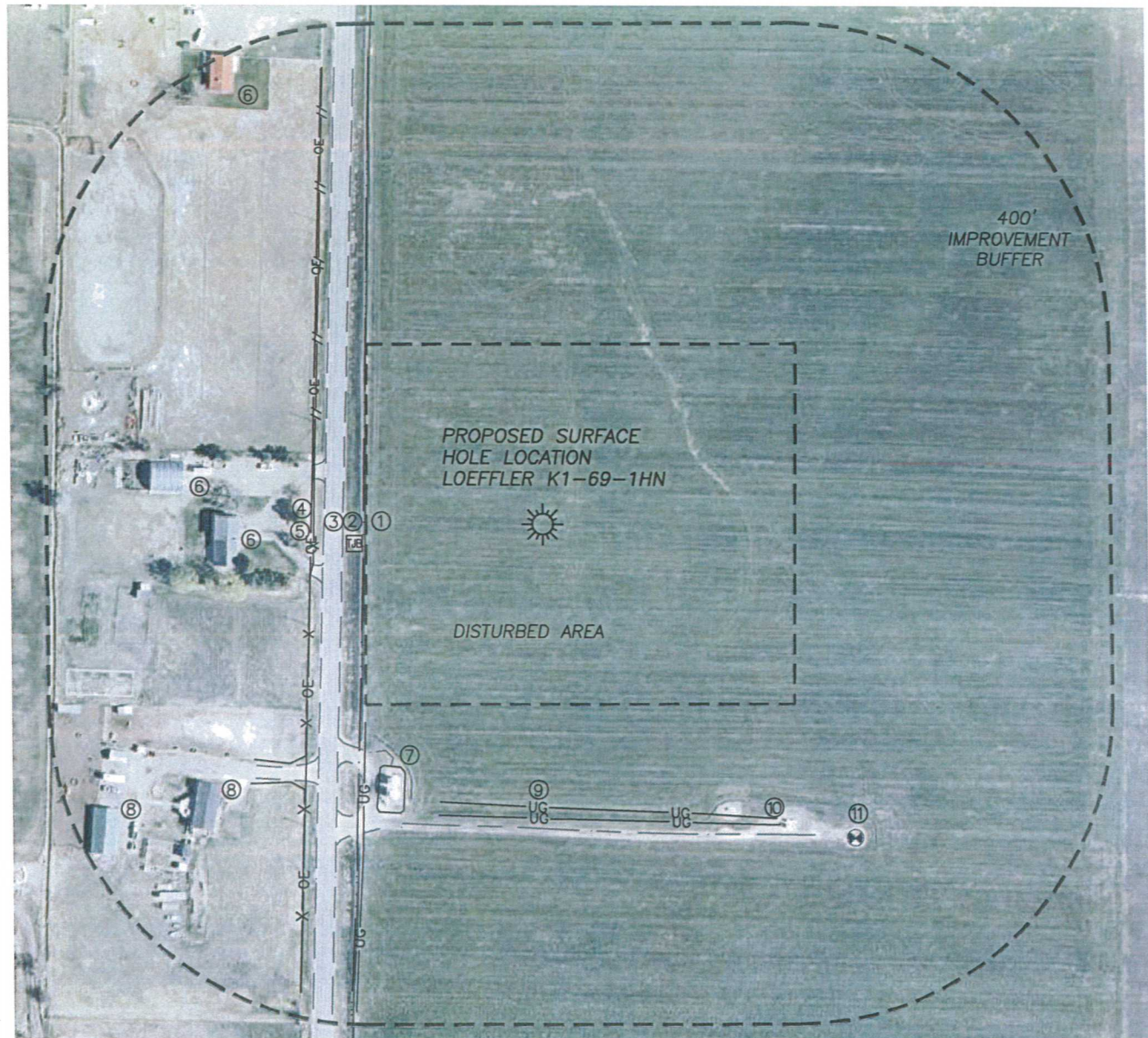


LOCATION DRAWING LOEFFLER K1-69-1HN

SECTION 1, TOWNSHIP 4 NORTH, RANGE 66 WEST OF THE 6TH PRINCIPAL MERIDIAN



IMPROVEMENTS

1. IRRIG. DITCH:	225'± W	9. GAS LINE:	353'± S
2. TELE. PED.:	239'± W	10. PROD. EQUIPMENT:	474'± SE
3. E EDGE WCR 35:	251'± W	11. GAS WELL:	552'± SE
4. WIRE FENCE:	288'± W		
5. O.H. UTILITY:	291'± W		
6. BUILDING:	663'± NW		
	386'± W		
	456'± W		
7. PROD. TANKS:	353'± SW		
8. BUILDING:	524'± SW		
	644'± SW		

DISTANCE TO NEAREST:

BUILDING:	386'± W
PUBLIC ROAD:	251'± W
ABOVE GRND UTILITY:	291'± W
RAILROAD:	1712'± S
PROP. LINE:	265'± W

