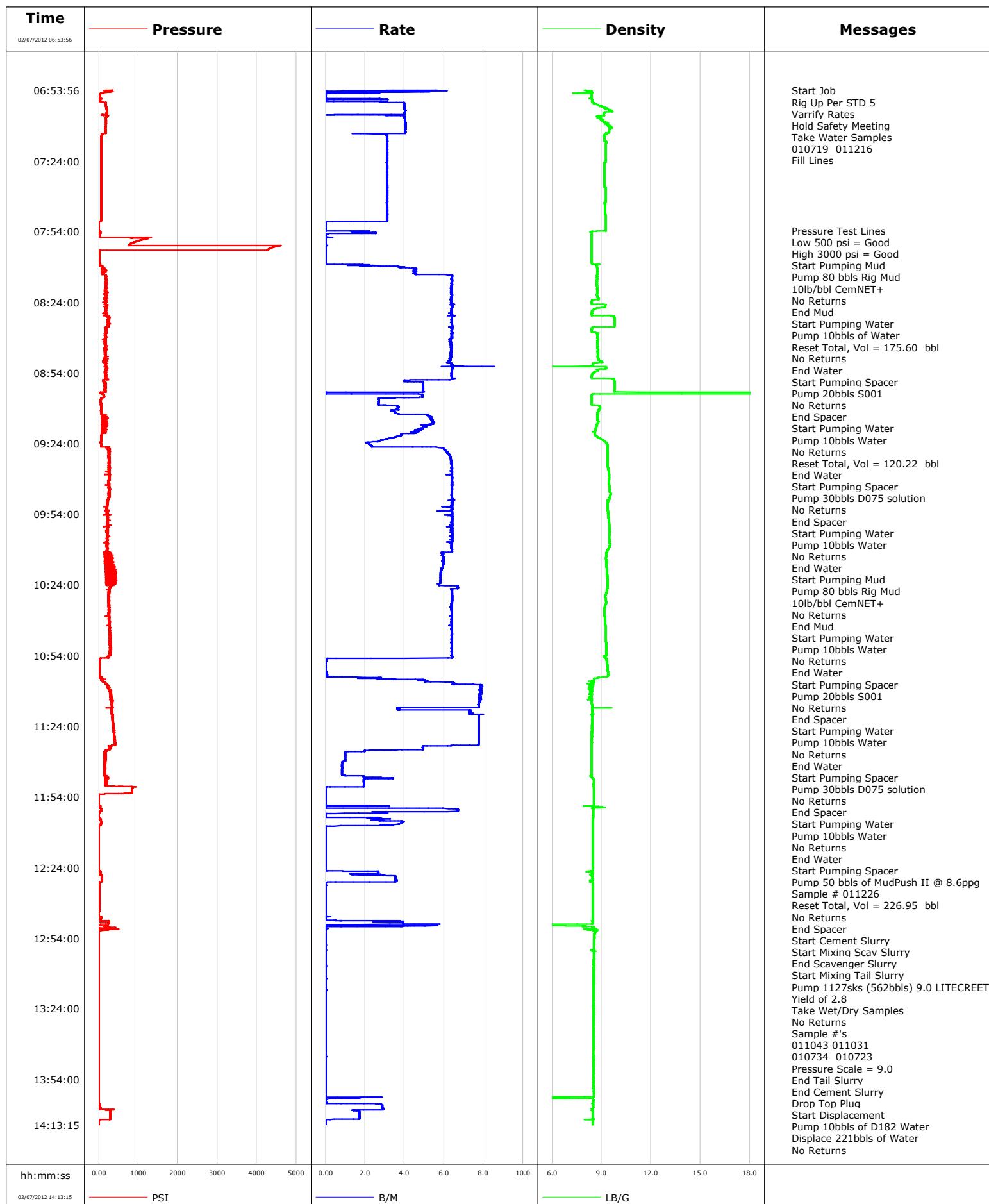


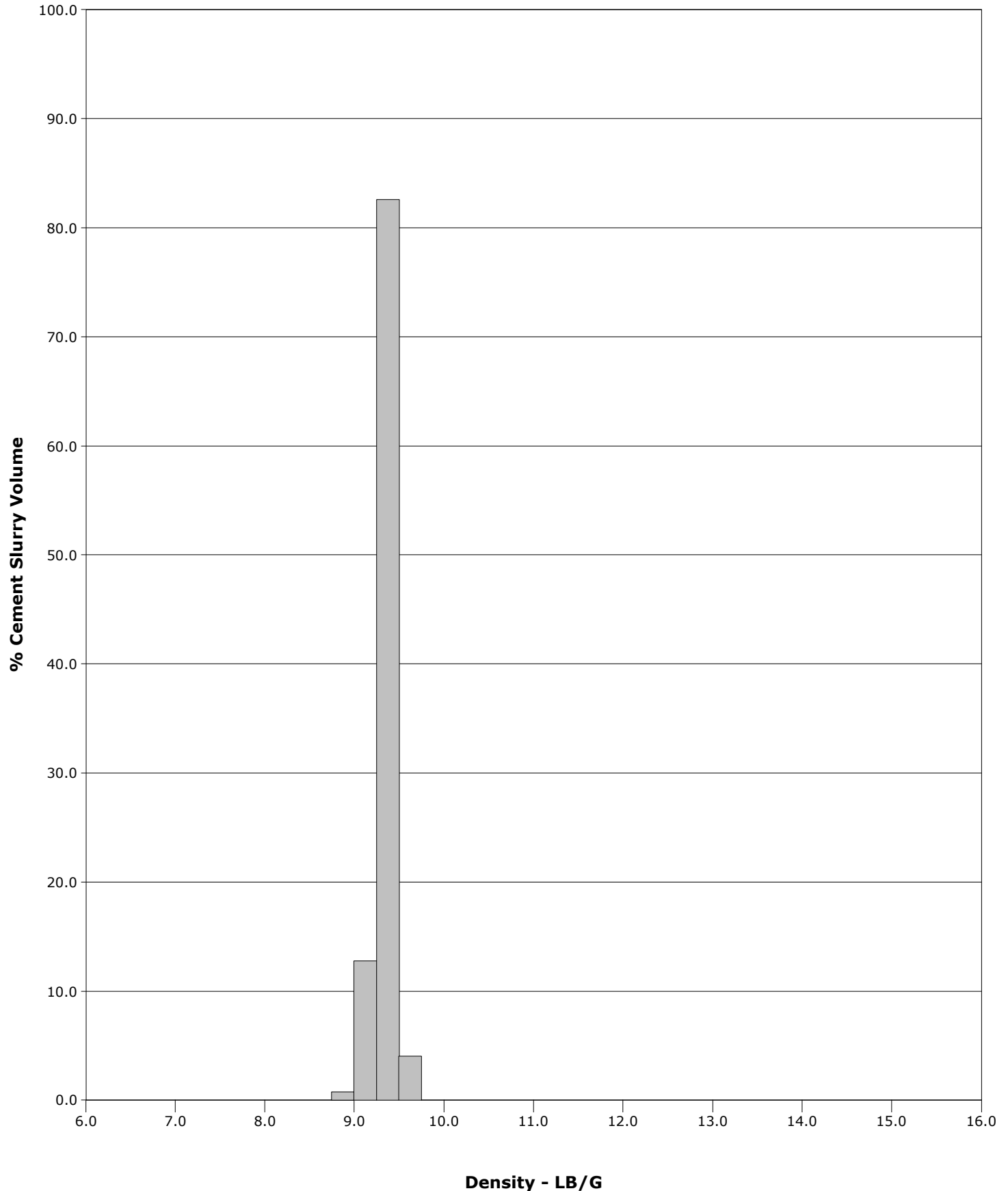
Well	SG WD08A-19	Client	ENCANA
Field	N. PARRACHUTE	SIR No.	711492
Engineer	DANT RYAN/TED HANSEN	Job Type	9 5/8 SURFACE
Country	United States	Job Date	02-07-2012



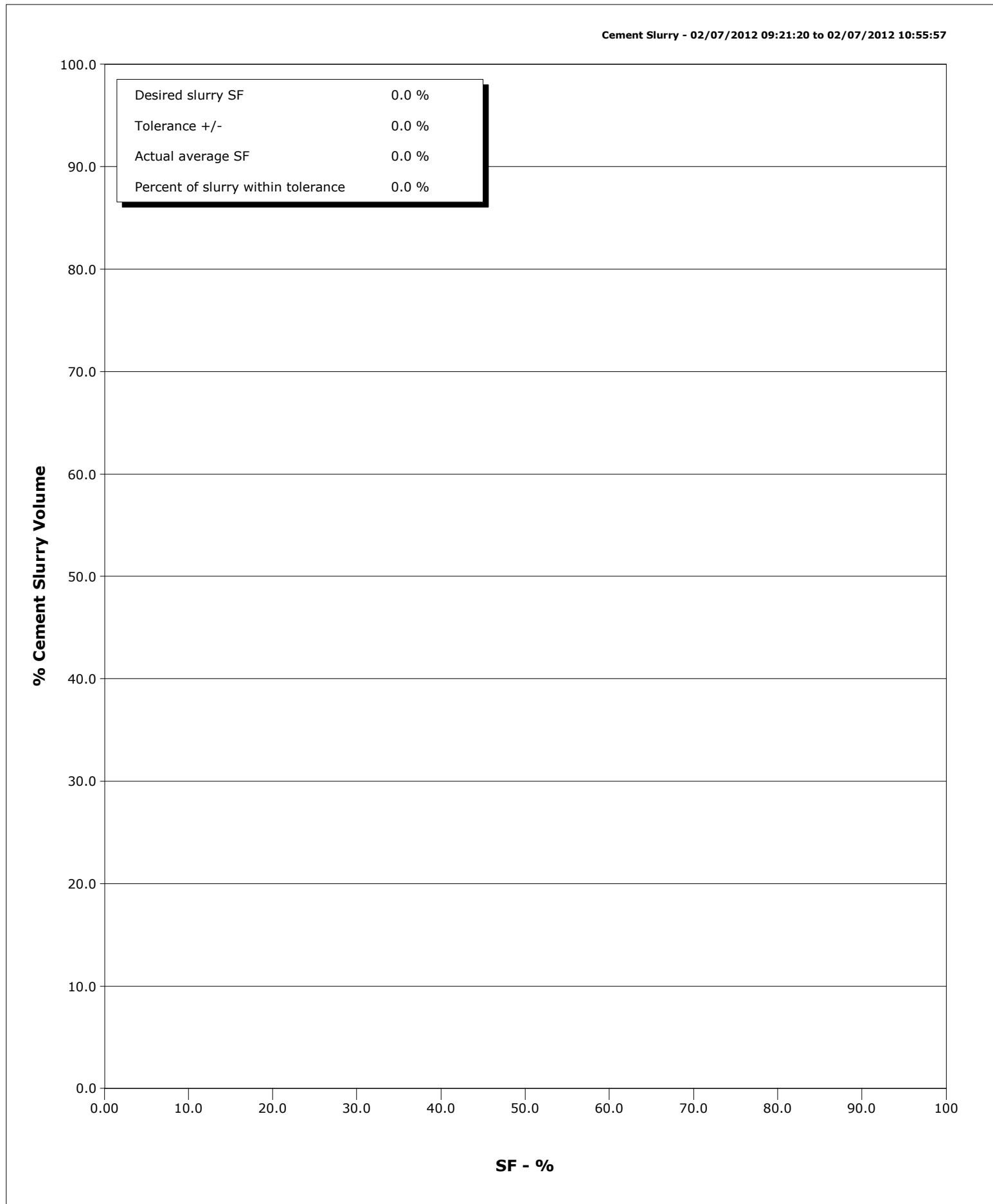
Well SG WD08A-19
Field N. PARRACHUTE
Engineer DANT RYAN/TED HANSEN
Country United States

Client ENCANA
SIR No. 711492
Job Type 9 5/8 SURFACE
Job Date 02-07-2012

Cement Slurry - 02/07/2012 09:21:20 to 02/07/2012 10:55:57



Well	SG WD08A-19	Client	ENCANA
Field	N. PARRACHUTE	SIR No.	711492
Engineer	DANT RYAN/TED HANSEN	Job Type	9 5/8 SURFACE
Country	United States	Job Date	02-07-2012



				Customer ENCANA				Job Number 711492										
Well SG WD08A-19 SG WD08A-19				Location (legal) C-19				Schlumberger Location				Job Start Feb/07/2012						
Field N. PARRACHUTE			Formation Name/Type Shale			Deviation deg		Bit Size 14.8 in		Well MD 3036.0 ft		Well TVD 3036.0 ft						
County GARFIELD			State/Province Colorado			BHP psi		BHST 115 degF		BHCT 95 degF		Pore Press. Gradient lb/gal						
Well Master 061328652			API/UWI															
Rig Name PATTERSON 330		Drilled For Gas		Service Via Land		Casing/Liner												
						Depth, ft		Size, in		Weight, lb/ft		Grade		Thread				
Offshore Zone		Well Class New		Well Type Development		120.0		20.0		94.0		J55		BUTT				
						3036.0		9.6		36.0		J55		8RD				
Drilling Fluid Type Bentonite			Max. Density 8.70 lb/gal		Plastic Viscosity 12.000 cP		Tubing/Drill Pipe											
							T/D		Depth, ft		Size, in		Weight, lb/ft		Grade		Thread	
Service Line Cementing		Job Type 9 5/8 SURFACE																
Max. Allowed Tub. Press psi		Max. Allowed Ann. Press psi			WH Connection Single Cement head			Perforations/Open Hole										
								Top, ft		Bottom, ft		shot/ft		No. of Shots		Total Interval ft		
								ft		ft						Diameter in		
								ft		ft								
								Treat Down Casing		Displacement 231.0 bbl		Packer Type		Packer Depth ft				
								Tubing Vol. bbl		Casing Vol. 235.0 bbl		Annular Vol. 386.0 bbl		Openhole Vol. 680.0 bbl				
Casing/Tubing Secured <input checked="" type="checkbox"/>			1 Hole Vol. Circulated prior to Cement <input checked="" type="checkbox"/>			Casing Tools				Squeeze Job								
Lift Pressure 1502 psi						Shoe Type Float				Squeeze Type								
Pipe Rotated <input type="checkbox"/>			Pipe Reciprocated <input type="checkbox"/>			Shoe Depth 3036.0 ft				Tool Type								
No. Centralizers			Top Plugs 1		Bottom Plugs		Stage Tool Type				Tool Depth ft							
Cement Head Type Single						Stage Tool Depth ft				Tail Pipe Size in								
Job Scheduled For Feb/07/2012 03:00			Arrived on Location Feb/07/2012 03:00			Leave Location Feb/07/2012 15:00			Collar Type Float				Tail Pipe Depth ft					
									Collar Depth 2990.0 ft				Sqz. Total Vol. bbl					
Date	Time 24-hr clock	Treating Pressure PSI	Flow Rate B/M	Density LB/G	Volume BBL	Message												
02/07/2012	06:53:56	132	2.7	7.92	1.9	Started Acquisition												
02/07/2012	06:53:58	205	3.4	8.02	2.0	Start Job												
02/07/2012	06:54:00	269	4.0	7.98	2.1	Rig Up Per STD 5												
02/07/2012	06:54:01	337	4.6	7.97	2.2	Take Water Samples												
02/07/2012	06:55:36	26	0.0	8.41	5.2													
02/07/2012	06:57:16	3	0.0	8.41	5.2													
02/07/2012	06:58:56	72	2.9	8.41	6.9													
02/07/2012	07:00:20	176	4.0	8.88	12.2	Fill Lines												
02/07/2012	07:00:36	173	4.0	8.92	13.3													
02/07/2012	07:02:16	193	4.0	9.41	20.0													
02/07/2012	07:03:56	197	4.0	9.15	26.7													
02/07/2012	07:05:36	176	4.0	8.79	32.4													
02/07/2012	07:07:16	183	4.0	9.08	39.1													
02/07/2012	07:08:56	180	4.0	9.32	45.8													
02/07/2012	07:10:36	160	4.0	9.45	52.6													
02/07/2012	07:12:16	177	4.0	9.24	59.3													
02/07/2012	07:13:56	58	3.1	9.15	64.3													
02/07/2012	07:15:36	55	3.1	9.21	69.5													
02/07/2012	07:17:16	53	3.1	9.26	74.7													
02/07/2012	07:18:56	51	3.1	9.26	79.8													
02/07/2012	07:20:36	52	3.1	9.26	85.0													

Well			Field		Job Start		Customer		Job Number	
SG WD08A-19 SG WD08A-19			N. PARRACHUTE		Feb/07/2012		ENCANA		711492	
Date	Time 24-hr clock	Treating Pressure PSI	Flow Rate B/M	Density LB/G	Volume BBL	Message				
02/07/2012	07:23:56	51	3.1	9.26	95.4					
02/07/2012	07:25:36	51	3.1	9.16	100.5					
02/07/2012	07:27:16	52	3.1	9.16	105.7					
02/07/2012	07:28:56	51	3.1	9.17	110.9					
02/07/2012	07:30:36	52	3.1	9.16	116.0					
02/07/2012	07:32:16	51	3.1	9.16	121.2					
02/07/2012	07:33:56	51	3.1	9.16	126.4					
02/07/2012	07:35:36	51	3.1	9.26	131.6					
02/07/2012	07:37:16	52	3.1	9.25	136.7					
02/07/2012	07:38:56	51	3.1	9.25	141.9					
02/07/2012	07:40:36	51	3.1	9.25	147.1					
02/07/2012	07:42:16	50	3.1	9.18	152.3					
02/07/2012	07:43:56	50	3.1	9.18	157.4					
02/07/2012	07:45:36	50	3.1	9.18	162.6					
02/07/2012	07:47:16	51	3.1	9.25	167.8					
02/07/2012	07:48:56	51	3.1	9.24	173.0					
02/07/2012	07:50:36	-7	0.0	9.25	175.3					
02/07/2012	07:52:16	-7	0.0	9.25	175.3					
02/07/2012	07:53:29	-13	0.0	9.25	0.0	Pressure Test Lines				
02/07/2012	07:53:32	-12	0.0	9.25	0.0	Low 500 psi = Good				
02/07/2012	07:53:56	23	1.8	8.45	0.3					
02/07/2012	07:55:36	5	0.0	8.40	2.2					
02/07/2012	07:57:16	1148	0.0	8.40	2.2					
02/07/2012	07:58:56	824	0.0	8.40	2.2					
02/07/2012	08:00:36	4415	0.0	8.40	2.2					
02/07/2012	08:02:16	11	0.0	8.40	2.2					
02/07/2012	08:03:56	5	0.0	8.40	2.2					
02/07/2012	08:05:36	5	0.0	8.40	2.2					
02/07/2012	08:07:16	5	0.0	8.39	2.2					
02/07/2012	08:07:19	5	0.0	8.39	2.2	Start Pumping Mud				
02/07/2012	08:07:21	5	0.0	8.38	2.2	Pump 80 bbls Rig Mud				
02/07/2012	08:07:22	5	0.0	8.38	2.2	No Returns				
02/07/2012	08:08:56	95	3.9	8.68	4.5					
02/07/2012	08:10:36	120	4.5	8.74	11.7					
02/07/2012	08:12:16	83	4.6	8.71	19.3					
02/07/2012	08:13:56	178	6.4	8.72	29.8					
02/07/2012	08:15:36	180	6.4	8.68	40.4					
02/07/2012	08:17:16	179	6.4	8.73	51.1					
02/07/2012	08:18:56	175	6.4	8.72	61.7					
02/07/2012	08:20:36	183	6.4	8.71	72.3					
02/07/2012	08:22:16	165	6.3	8.79	82.9					
02/07/2012	08:23:03	165	6.4	8.44	87.9	End Mud				
02/07/2012	08:23:13	173	6.4	8.42	89.0	Start Pumping Water				
02/07/2012	08:23:31	179	6.4	8.41	90.9	No Returns				
02/07/2012	08:23:56	181	6.3	8.40	93.5					
02/07/2012	08:24:58	195	6.3	9.25	100.1	End Water				
02/07/2012	08:25:02	207	6.4	9.25	100.5	Start Pumping Spacer				
02/07/2012	08:25:36	195	6.4	9.20	104.2					
02/07/2012	08:26:01	180	6.4	9.19	106.8	No Returns				
02/07/2012	08:27:16	174	6.4	8.49	114.8					
02/07/2012	08:28:02	173	6.4	8.41	119.7	End Spacer				
02/07/2012	08:28:04	174	6.4	8.41	119.9	Start Pumping Water				
02/07/2012	08:28:05	171	6.4	8.41	120.0	Pump 10bbls Water				
02/07/2012	08:28:25	159	6.4	8.41	122.1	No Returns				

Well			Field		Job Start		Customer		Job Number	
SG WD08A-19 SG WD08A-19			N. PARRACHUTE		Feb/07/2012		ENCANA		711492	
Date	Time 24-hr clock	Treating Pressure PSI	Flow Rate B/M	Density LB/G	Volume BBL	Message				
02/07/2012	08:28:56	211	6.4	8.40	125.4					
02/07/2012	08:29:25	203	6.4	8.40	128.5	End Water				
02/07/2012	08:30:02	255	6.4	9.75	132.4	Start Pumping Spacer				
02/07/2012	08:30:03	255	6.4	9.75	132.5	Pump 30bbls D075 solution				
02/07/2012	08:30:36	249	6.4	9.76	136.1					
02/07/2012	08:31:02	230	6.4	9.77	138.8	No Returns				
02/07/2012	08:32:16	217	6.4	9.78	146.7					
02/07/2012	08:32:23	223	6.4	9.78	147.4	End Spacer				
02/07/2012	08:32:24	230	6.4	9.78	147.6	Start Pumping Water				
02/07/2012	08:33:56	226	6.4	9.78	157.4					
02/07/2012	08:35:36	169	6.4	8.40	168.0					
02/07/2012	08:36:30	200	6.4	8.41	173.7	Pump 10bbls Water				
02/07/2012	08:36:50	181	6.4	8.60	175.9	Start Pumping Mud				
02/07/2012	08:37:07	168	6.4	8.68	177.7	Pump 80 bbls Rig Mud				
02/07/2012	08:37:08	177	6.4	8.68	177.8	10lb/bbl CemNET+				
02/07/2012	08:37:16	157	6.4	8.78	178.6					
02/07/2012	08:38:56	183	6.4	8.75	189.3					
02/07/2012	08:40:36	149	6.3	8.76	199.9					
02/07/2012	08:42:16	172	6.4	8.74	210.4					
02/07/2012	08:43:56	160	6.4	8.77	221.0					
02/07/2012	08:45:36	167	6.4	8.78	231.6					
02/07/2012	08:47:16	154	6.4	8.76	242.2					
02/07/2012	08:48:56	195	6.3	8.92	252.7					
02/07/2012	08:49:01	216	6.2	8.95	253.2	End Mud				
02/07/2012	08:50:36	164	6.4	8.47	263.2					
02/07/2012	08:51:00	169	6.4	8.44	265.8	End Water				
02/07/2012	08:52:16	199	6.4	9.26	274.0					
02/07/2012	08:53:56	165	6.4	8.54	284.7					
02/07/2012	08:54:45	184	6.4	8.42	289.9	End Spacer				
02/07/2012	08:54:46	192	6.4	8.42	290.0	Start Pumping Water				
02/07/2012	08:55:36	184	6.4	8.41	295.3					
02/07/2012	08:56:26	183	6.4	9.62	300.6	Start Pumping Spacer				
02/07/2012	08:56:27	184	6.4	9.66	300.7	Pump 30bbls D075 solution				
02/07/2012	08:56:28	193	6.4	9.66	300.8	No Returns				
02/07/2012	08:57:16	110	4.0	9.76	305.3					
02/07/2012	08:58:56	172	4.9	9.78	313.0					
02/07/2012	09:00:36	153	4.9	9.78	321.2					
02/07/2012	09:02:16	79	1.0	25.00	329.4					
02/07/2012	09:02:27	8	0.0	25.00	329.4	End Spacer				
02/07/2012	09:03:36	120	4.9	8.41	332.7	Start Pumping Water				
02/07/2012	09:03:40	122	4.9	8.41	333.0	Pump 10bbls Water				
02/07/2012	09:03:56	131	4.9	8.41	334.3					
02/07/2012	09:05:36	48	2.7	8.41	340.3					
02/07/2012	09:07:16	52	2.7	8.40	344.7					
02/07/2012	09:07:33	45	2.7	8.40	345.5	End Water				
02/07/2012	09:07:35	45	2.7	8.41	345.6	Start Pumping Spacer				
02/07/2012	09:07:57	60	3.6	8.83	346.7	Pump 50 bbls of MudPush II @ 8.6ppg				
02/07/2012	09:08:22	58	3.7	8.87	348.2	Sample # 011226				
02/07/2012	09:08:40	57	3.7	8.89	349.3	Reset Total, Vol = 226.95 bbl				
02/07/2012	09:08:56	59	3.7	8.91	350.3					
02/07/2012	09:10:36	54	3.5	8.78	356.2					
02/07/2012	09:12:16	145	5.2	8.75	363.3					
02/07/2012	09:13:56	115	5.4	8.74	372.1					
02/07/2012	09:15:36	131	5.4	8.74	381.2					

Well SG WD08A-19 SG WD08A-19			Field N. PARRACHUTE		Job Start Feb/07/2012		Customer ENCANA		Job Number 711492	
Date	Time 24-hr clock	Treating Pressure PSI	Flow Rate B/M	Density LB/G	Volume BBL	Message				
02/07/2012	09:18:56	68	4.7	8.56	397.7					
02/07/2012	09:20:36	61	3.8	8.61	404.6					
02/07/2012	09:21:19	58	3.5	8.77	407.3	End Spacer				
02/07/2012	09:21:20	59	3.5	8.78	407.3	Start Cement Slurry				
02/07/2012	09:21:21	59	3.5	8.78	407.4	Start Mixing Scav Slurry				
02/07/2012	09:22:16	59	3.0	9.01	410.4					
02/07/2012	09:23:01	60	2.7	9.17	412.5	End Scavenger Slurry				
02/07/2012	09:23:03	61	2.7	9.17	412.6	Pump 1127sks (562bbbls) 9.0 LITECREET				
02/07/2012	09:23:04	60	2.7	9.17	412.6	Take Wet/Dry Samples				
02/07/2012	09:23:56	49	2.2	9.30	414.6					
02/07/2012	09:25:36	217	5.3	9.36	418.6					
02/07/2012	09:27:16	256	6.1	9.36	428.6					
02/07/2012	09:28:56	259	6.3	9.36	438.9					
02/07/2012	09:29:00	264	6.3	9.36	439.3	No Returns				
02/07/2012	09:30:36	256	6.3	9.36	449.4					
02/07/2012	09:32:16	246	6.4	9.35	460.0					
02/07/2012	09:33:56	263	6.4	9.37	470.6					
02/07/2012	09:35:36	255	6.3	9.42	481.3					
02/07/2012	09:37:16	251	6.3	9.44	491.9					
02/07/2012	09:38:56	262	6.4	9.44	502.5					
02/07/2012	09:40:36	243	6.4	9.43	513.2					
02/07/2012	09:42:16	259	6.4	9.48	523.8					
02/07/2012	09:43:56	260	6.4	9.48	534.5					
02/07/2012	09:45:36	248	6.4	9.54	545.1					
02/07/2012	09:47:16	240	6.4	9.48	555.8					
02/07/2012	09:48:56	212	6.4	9.37	566.5					
02/07/2012	09:49:26	219	6.4	9.36	569.7	Pressure Scale = 9.0				
02/07/2012	09:50:36	209	6.4	9.35	577.2					
02/07/2012	09:52:16	206	6.4	9.35	587.8					
02/07/2012	09:53:56	203	6.4	9.39	598.3					
02/07/2012	09:55:36	217	6.4	9.41	608.9					
02/07/2012	09:57:16	213	6.4	9.44	619.6					
02/07/2012	09:58:56	210	6.4	9.46	630.2					
02/07/2012	10:00:36	221	6.4	9.47	640.8					
02/07/2012	10:02:16	210	6.4	9.48	651.5					
02/07/2012	10:03:56	220	6.4	9.46	662.2					
02/07/2012	10:05:36	198	6.4	9.47	672.8					
02/07/2012	10:07:16	195	6.4	9.50	683.5					
02/07/2012	10:08:56	217	6.4	9.39	694.1					
02/07/2012	10:10:36	176	5.9	9.27	704.5					
02/07/2012	10:12:16	140	6.0	9.26	714.3					
02/07/2012	10:13:56	167	5.9	9.28	724.3					
02/07/2012	10:15:36	354	6.0	9.29	734.2					
02/07/2012	10:17:16	199	5.9	9.31	744.1					
02/07/2012	10:18:56	173	5.8	9.32	753.9					
02/07/2012	10:20:36	435	5.8	9.33	763.6					
02/07/2012	10:22:16	262	5.8	9.33	773.3					
02/07/2012	10:23:56	336	5.7	9.34	782.9					
02/07/2012	10:25:36	278	6.7	9.33	793.7					
02/07/2012	10:27:16	259	6.4	9.29	804.3					
02/07/2012	10:28:56	246	6.4	9.22	815.0					
02/07/2012	10:30:36	245	6.4	9.25	825.7					
02/07/2012	10:32:16	250	6.4	9.25	836.3					
02/07/2012	10:33:56	253	6.4	9.17	846.9					

Well SG WD08A-19 SG WD08A-19			Field N. PARRACHUTE		Job Start Feb/07/2012		Customer ENCANA		Job Number 711492	
Date	Time 24-hr clock	Treating Pressure PSI		Flow Rate B/M	Density LB/G		Volume BBL		Message	
02/07/2012	10:37:16	265		6.4	9.17		868.2			
02/07/2012	10:38:56	251		6.4	9.20		878.8			
02/07/2012	10:40:36	259		6.4	9.23		889.4			
02/07/2012	10:42:16	267		6.4	9.25		900.0			
02/07/2012	10:43:56	269		6.4	9.26		910.7			
02/07/2012	10:45:36	278		6.4	9.26		921.3			
02/07/2012	10:47:16	272		6.4	9.26		932.0			
02/07/2012	10:48:56	279		6.4	9.27		942.6			
02/07/2012	10:50:36	289		6.4	9.28		953.2			
02/07/2012	10:52:16	282		6.4	9.28		963.9			
02/07/2012	10:53:56	278		6.4	9.30		974.5			
02/07/2012	10:55:36	29		0.0	9.29		983.0			
02/07/2012	10:55:56	22		0.0	9.29		983.0		End Tail Slurry	
02/07/2012	10:55:57	22		0.0	9.29		983.0		End Cement Slurry	
02/07/2012	10:56:01	21		0.0	9.29		983.0		Drop Top Plug	
02/07/2012	10:56:03	21		0.0	9.29		983.0		Start Displacement	
02/07/2012	10:56:04	21		0.0	9.29		983.0		Pump 10bbls of D182 Water	
02/07/2012	10:56:05	21		0.0	9.29		983.0		Displace 221bbls of Water	
02/07/2012	10:56:09	20		0.0	9.29		983.0		Reset Total, Vol = 633.58 bbl	
02/07/2012	10:57:16	16		0.0	9.32		983.0			
02/07/2012	10:58:56	15		0.0	9.34		983.0			
02/07/2012	11:00:36	16		0.0	9.37		983.0			
02/07/2012	11:02:16	17		0.1	9.41		983.0			
02/07/2012	11:03:56	68		3.4	8.55		984.8			
02/07/2012	11:05:36	149		6.5	8.45		993.2			
02/07/2012	11:07:16	217		7.9	8.46		1005.3			
02/07/2012	11:08:56	284		7.8	8.41		1018.4			
02/07/2012	11:10:36	289		7.8	8.32		1031.5			
02/07/2012	11:12:16	321		7.8	8.37		1044.5			
02/07/2012	11:13:56	330		7.8	8.40		1057.5			
02/07/2012	11:15:00	334		7.7	8.41		1065.8		Good Returns	
02/07/2012	11:15:36	337		7.7	8.41		1070.4			
02/07/2012	11:17:16	322		7.3	8.42		1078.5			
02/07/2012	11:18:56	342		7.3	8.43		1090.6			
02/07/2012	11:20:36	348		7.7	8.41		1103.5			
02/07/2012	11:22:16	350		7.7	8.41		1116.4			
02/07/2012	11:23:56	370		7.7	8.41		1129.3			
02/07/2012	11:25:36	385		7.7	8.41		1142.2			
02/07/2012	11:27:16	371		7.7	8.41		1155.1			
02/07/2012	11:28:56	384		7.7	8.41		1168.0			
02/07/2012	11:30:36	413		7.7	8.41		1180.8			
02/07/2012	11:32:16	327		6.4	8.41		1193.6			
02/07/2012	11:33:56	280		4.9	8.41		1201.9			
02/07/2012	11:35:36	145		1.0	8.41		1205.2			
02/07/2012	11:37:16	140		1.0	8.41		1206.8			
02/07/2012	11:38:56	169		1.0	8.40		1208.4			
02/07/2012	11:40:36	159		0.8	8.41		1209.9			
02/07/2012	11:42:16	138		0.8	8.41		1211.3			
02/07/2012	11:43:56	131		0.8	8.41		1212.6			
02/07/2012	11:45:36	155		1.9	8.41		1214.6			
02/07/2012	11:47:16	166		1.9	8.51		1218.6			
02/07/2012	11:48:56	194		1.9	8.50		1221.8			
02/07/2012	11:50:36	842		0.0	8.51		1223.6			
02/07/2012	11:51:55	839		0.0	8.51		1223.6		Bump Top Plug	

Well			Field		Job Start		Customer		Job Number	
SG WD08A-19 SG WD08A-19			N. PARRACHUTE		Feb/07/2012		ENCANA		711492	
Date	Time 24-hr clock	Treating Pressure PSI	Flow Rate B/M	Density LB/G	Volume BBL	Message				
02/07/2012	11:53:56	-7	0.0	8.51	1223.6					
02/07/2012	11:55:36	-6	0.0	8.51	1223.6					
02/07/2012	11:57:16	-9	0.0	8.51	1223.6					
02/07/2012	11:58:56	38	4.7	8.46	1224.8					
02/07/2012	12:00:36	8	3.1	8.48	1234.7					
02/07/2012	12:02:02	-9	0.0	8.48	1236.1	Floats Held				
02/07/2012	12:02:03	-9	0.0	8.48	1236.1	1bbls Back				
02/07/2012	12:02:16	-8	0.0	8.48	1236.1					
02/07/2012	12:03:16	8	2.8	8.46	1237.3	Wash out Rig Line				
02/07/2012	12:03:56	40	2.9	8.46	1239.2					
02/07/2012	12:05:36	50	3.7	8.46	1245.3					
02/07/2012	12:07:16	-2	0.0	8.46	1247.9					
02/07/2012	12:08:56	-9	0.0	8.46	1247.9					
02/07/2012	12:10:36	-5	0.0	8.46	1247.9					
02/07/2012	12:12:16	-5	0.0	8.46	1247.9					
02/07/2012	12:13:56	-5	0.0	8.46	1247.9					
02/07/2012	12:15:36	-5	0.0	8.46	1247.9					
02/07/2012	12:17:16	-5	0.0	8.46	1247.9					
02/07/2012	12:18:56	-4	0.0	8.46	1247.9					
02/07/2012	12:20:36	-4	0.0	8.46	1247.9					
02/07/2012	12:22:16	-4	0.0	8.46	1247.9					
02/07/2012	12:23:56	-4	0.0	8.46	1247.9					
02/07/2012	12:25:36	33	1.4	8.30	1247.9					
02/07/2012	12:27:16	39	1.9	8.36	1252.0					
02/07/2012	12:28:56	75	3.5	8.44	1257.7					
02/07/2012	12:30:36	17	0.0	8.45	1262.3					
02/07/2012	12:32:16	15	0.0	8.45	1262.3					
02/07/2012	12:33:56	3	0.0	8.45	1262.3					
02/07/2012	12:35:36	5	0.0	8.45	1262.3					
02/07/2012	12:37:16	5	0.0	8.45	1262.3					
02/07/2012	12:38:41	9	0.0	8.45	1262.3	Shut Down Wait on Parrisite Line				
02/07/2012	12:38:56	12	0.0	8.45	1262.3					
02/07/2012	12:40:36	6	0.0	8.45	1262.3					
02/07/2012	12:42:16	6	0.0	8.44	1262.3					
02/07/2012	12:43:56	-3	0.0	8.45	1262.3					
02/07/2012	12:45:36	50	0.0	8.45	1262.3					
02/07/2012	12:47:16	247	3.9	8.46	1264.5					
02/07/2012	12:48:56	225	4.2	7.86	1269.0					
02/07/2012	12:50:36	217	0.0	8.31	1269.8					
02/07/2012	12:52:16	-3	0.0	8.59	1269.8					
02/07/2012	12:53:56	-3	0.0	8.59	1269.8					
02/07/2012	12:55:36	-3	0.0	8.51	1269.8					
02/07/2012	12:57:16	-3	0.0	8.51	1269.9					
02/07/2012	12:58:56	-3	0.0	8.50	1269.9					
02/07/2012	13:00:36	-3	0.0	8.51	1269.9					
02/07/2012	13:02:16	-4	0.0	8.51	1269.9					
02/07/2012	13:03:56	-3	0.0	8.53	1269.9					
02/07/2012	13:05:36	-3	0.0	8.53	1269.9					
02/07/2012	13:07:16	-3	0.0	8.55	1269.9					
02/07/2012	13:08:56	-3	0.0	8.50	1269.9					
02/07/2012	13:10:36	-3	0.0	8.51	1269.9					
02/07/2012	13:12:16	-4	0.0	8.50	1269.9					
02/07/2012	13:13:56	-3	0.0	8.50	1269.9					
02/07/2012	13:15:36	-4	0.0	8.50	1269.9					

Well SG WD08A-19 SG WD08A-19			Field N. PARRACHUTE		Job Start Feb/07/2012		Customer ENCANA		Job Number 711492	
Date	Time 24-hr clock	Treating Pressure PSI		Flow Rate B/M	Density LB/G		Volume BBL		Message	
02/07/2012	13:18:56	-3		0.0	8.51		1269.9			
02/07/2012	13:20:36	-3		0.0	8.50		1269.9			
02/07/2012	13:22:16	-4		0.0	8.50		1269.9			
02/07/2012	13:23:56	-4		0.0	8.50		1269.9			
02/07/2012	13:25:36	-4		0.0	8.52		1269.9			
02/07/2012	13:27:16	-4		0.0	8.49		1269.9			
02/07/2012	13:28:56	-4		0.0	8.51		1269.9			
02/07/2012	13:30:36	-4		0.0	8.50		1269.9			
02/07/2012	13:32:16	-4		0.0	8.50		1269.9			
02/07/2012	13:33:56	-5		0.0	8.50		1269.9			
02/07/2012	13:35:36	-4		0.0	8.49		1269.9			
02/07/2012	13:37:16	-4		0.0	8.49		1269.9			
02/07/2012	13:38:56	-4		0.0	8.50		1269.9			
02/07/2012	13:40:36	-4		0.0	8.49		1269.9			
02/07/2012	13:42:16	-4		0.0	8.49		1269.9			
02/07/2012	13:43:56	-4		0.0	8.50		1269.9			
02/07/2012	13:45:36	-4		0.0	8.50		1269.9			
02/07/2012	13:47:16	-4		0.0	8.50		1269.9			
02/07/2012	13:48:56	-3		0.0	8.50		1269.9			
02/07/2012	13:50:36	-4		0.0	8.50		1269.9			
02/07/2012	13:52:16	-4		0.0	8.50		1269.9			
02/07/2012	13:53:56	-4		0.0	8.50		1269.9			
02/07/2012	13:55:36	-4		0.0	8.50		1269.9			
02/07/2012	13:57:16	-9		0.0	8.51		1269.9			
02/07/2012	13:58:56	-9		0.0	8.50		1269.9			
02/07/2012	14:00:36	-9		0.0	8.51		1269.9			
02/07/2012	14:02:16	-5		1.3	7.59		1270.9			
02/07/2012	14:03:56	-9		0.0	8.49		1271.0			
02/07/2012	14:05:36	27		2.9	8.48		1274.6			
02/07/2012	14:07:16	272		1.4	8.43		1278.9			
02/07/2012	14:08:56	287		1.7	8.45		1281.7			
02/07/2012	14:10:36	293		1.7	8.46		1284.5			
02/07/2012	14:12:16	-7		0.0	8.47		1285.1			
02/07/2012	14:12:29	-7		0.0	8.47		1285.1	Pump 10 bbls of Sugar Water down Parrasite Line		

Post Job Summary

Average Pump Rates, bbl/min					Volume of Fluid Injected, bbl			
Slurry 4.9	N2	Mud 6.4	Maximum Rate 8.6	Total Slurry 1458.6	Mud 117.8	Spacer 482.9	N2	
Treating Pressure Summary, psi					Breakdown Fluid			
Maximum 4605	Final -7	Average 206	Bump Plug to 900	Breakdown	Type	Volume bbl	Density lb/gal	
Avg. N2 Percent %		Designed Slurry Volume 562.0 bbl	Displacement 253.3 bbl	Mix Water Temp 70 degF	Cement Circulated to Surface? <input type="checkbox"/>	Volume bbl		
					Washed Thru Perfs <input type="checkbox"/>	To ft		
Customer or Authorized Representative MIKE QUINTANA			Schlumberger Supervisor DANT RYAN/TED HANSEN			Circulation Lost <input checked="" type="checkbox"/>	Job Completed <input checked="" type="checkbox"/>	
						-	-	