

Project: Wattenberg Field  
Site: K (Sec.1-T04-R66W) Weld County, CO  
Well: Loeffler K1-65HN  
Design: APD - Rev 0

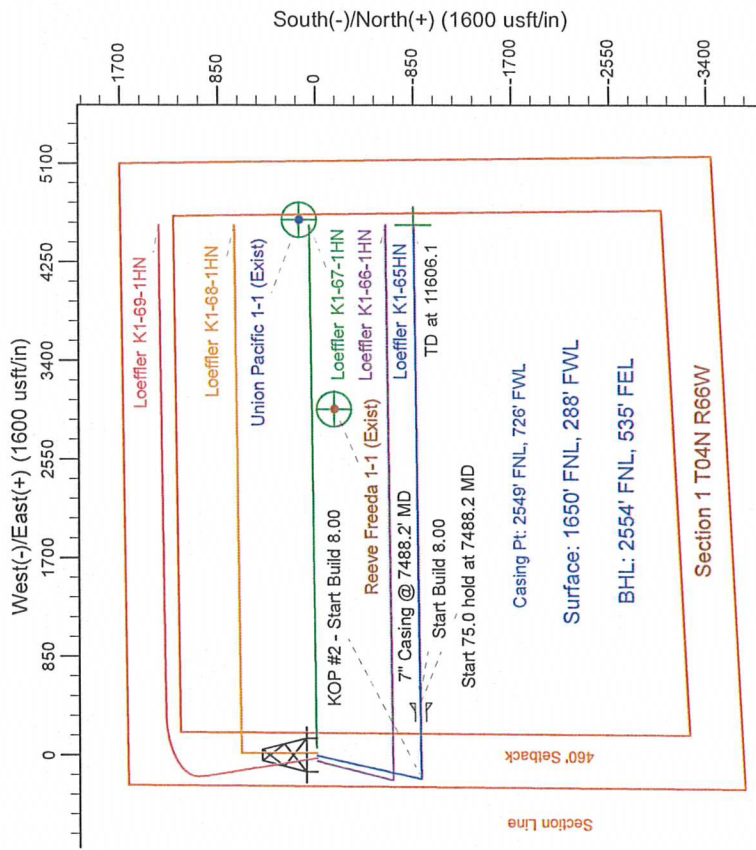
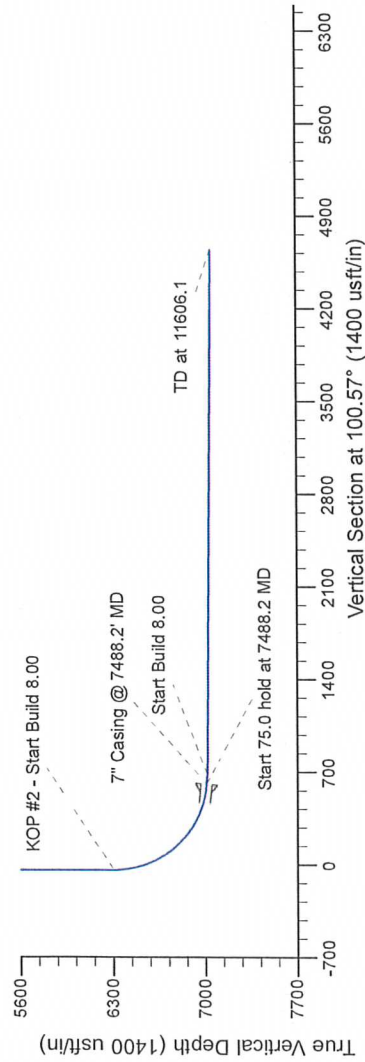
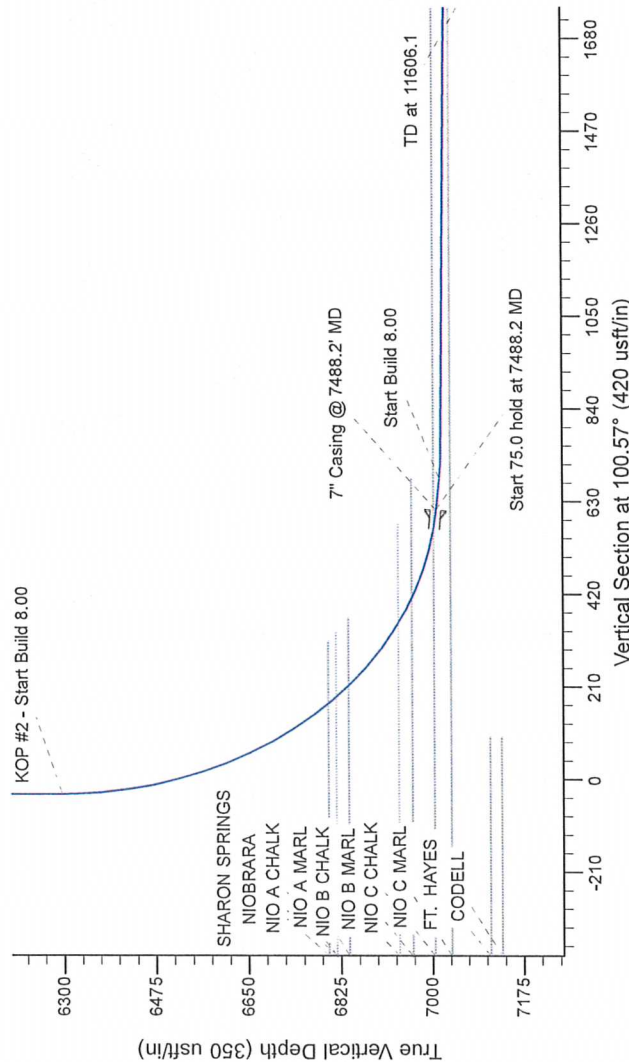
# Northern Region Drilling

Geodetic System: US State Plane 1983  
Datum: North American Datum 1983  
Ellipsoid: GRS 1980  
Zone: Colorado Northern Zone  
System Datum: Mean Sea Level

## SECTION DETAILS

Sec	MD	Inc	Azi	TVD	+NLS	+EAW	Dleg	TFace	VSect	Target
1	0.0	0.00	0.00	0.0	0.0	0.0	0.00	0.00	0.0	
2	1200.4	17.91	192.48	2076.1	-134.0	-29.6	0.00	192.48	-4.6	
3	2090.4	17.81	192.48	4103.9	-770.0	-170.4	0.00	180.00	-26.3	
4	4220.2	0.00	0.00	4980.0	-904.0	-200.0	0.00	180.00	-30.8	
5	5110.6	0.00	0.00	6295.1	-904.0	-200.0	0.00	89.38	610.5	
6	6425.7	0.00	0.00	7008.6	-897.0	453.7	0.00	89.38	683.8	
7	7488.2	85.00	89.38	7015.1	-896.2	528.4	0.00	0.00	738.9	
8	7563.2	85.00	89.38	7017.8	-895.6	584.6	0.00	0.00	4649.7	
9	7619.4	89.50	89.38	7052.6	-852.7	4570.9	0.00	0.00		
10	11606.1	89.50	89.38				0.00	0.00		

Loeffler K1-65HN BHL 2554FNL, 535FEL



T  
G  
M

Azimuths to Grid North  
True North: -0.49°  
Magnetic North: 8.06°  
Magnetic Field  
Strength: 52947.0snT  
Dip Angle: 66.96°  
Date: 3/20/2013  
Model: IGRF200510

WELL DETAILS: Loeffler K1-65HN			
North	East	Ground Level	Longitude
0.0	0.0	4666.0	-104.733880
1369045.94	3213546.27	40.343900	
Plan: APD - Rev 0 (Loeffler K1-65HN/Original Drilling)			
Created By: Shalley Jewell		Date: 8/31/2013	
Checked:		Date:	
Reviewed:		Date:	
Approved:		Date:	