



December 10, 2012

Department of Natural Resources
Oil and Gas Conservation Commission
The Chancery Building
1120 Lincoln St., Suite 801
Denver, CO 80203

Re: **30 Day Certification Letter - 318A-e**
GOBBLER 37N-27HZ
Township 2 North, Range 66 West, Section 22: SW/4SE/4
Unit Spacing: 02N-66W-Sec 22 S/2SE/4; Sec 27 E/2
Weld County, Colorado

Ladies/Gentlemen:

Kerr McGee Oil and Gas Onshore LP ("KMG") hereby certify to the Director that KMG owns one-hundred percent (100%) of the mineral rights in the proposed spacing unit. Therefore, KMG respectfully requests the Director to approve the boundary well.

If you have any questions or issues regarding this permit, please contact Cheryl Light at (720) 929-6461.

Very truly yours,

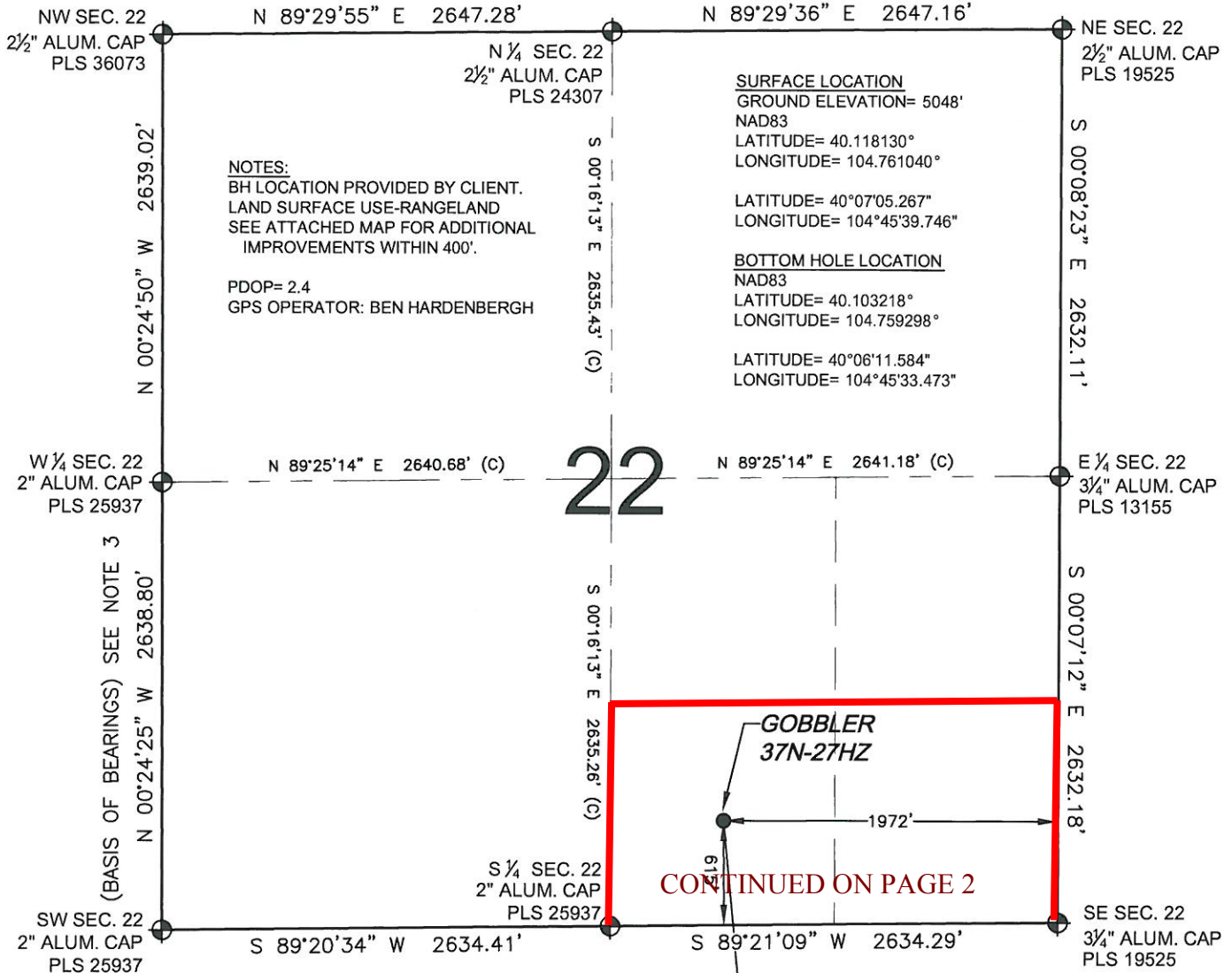
KERR-McGEE OIL AND GAS ONSHORE LP

A handwritten signature in cursive script that reads 'Rebecca Heim'.

Rebecca Heim
Regulatory Analyst II

WELL LOCATION CERTIFICATE: GOBBLER 37N-27HZ

SECTION 22, TOWNSHIP 2 NORTH, RANGE 66 WEST, 6TH P.M.



SURFACE LOCATION
 GROUND ELEVATION= 5048'
 NAD83
 LATITUDE= 40.118130°
 LONGITUDE= 104.761040°

LATITUDE= 40°07'05.267"
 LONGITUDE= 104°45'39.746"

BOTTOM HOLE LOCATION
 NAD83
 LATITUDE= 40.103218°
 LONGITUDE= 104.759298°

LATITUDE= 40°06'11.584"
 LONGITUDE= 104°45'33.473"

NOTES:
 BH LOCATION PROVIDED BY CLIENT.
 LAND SURFACE USE-RANGELAND
 SEE ATTACHED MAP FOR ADDITIONAL
 IMPROVEMENTS WITHIN 400'.

PDOP= 2.4
 GPS OPERATOR: BEN HARDENBERGH

22

CONTINUED ON PAGE 2

WELL **GOBBLER 37N-27HZ** TO BE LOCATED
 615' FSL AND 1972' FEL

LEGEND

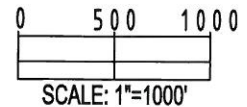
- ⊕ = EXISTING MONUMENT
- ⬤ = PROPOSED WELL
- ⬥ = BOTTOM HOLE
- ◆ = EXISTING WELL
- BH = BOTTOM HOLE

NOTES:

1. THIS FIELD SURVEY CONFORMS TO THE MINIMUM STANDARDS SET BY THE C.O.G.C.C., RULE NO. 215
2. HORIZONTAL POSITIONS AND ORTHOMETRIC ELEVATIONS SHOWN AT THE WELL HEAD, ARE BASED ON GPS-RTK POSITIONS DERIVED FROM MINIMUM 2-HOUR STATIC OBSERVATIONS CORRECTED BY THE NATIONAL GEODETIC SURVEY ONLINE POSITIONING USER SERVICE, O.P.U.S. DATUM: HORIZONTAL = NAD83/2007, VERTICAL = NAVD88
3. THE BASIS OF BEARINGS ARE STATE PLANE COORDINATE SYSTEM GRID BEARINGS SHOWN HEREON BETWEEN THE DESCRIBED THE MONUMENTS SHOWN HEREON.
4. GRID DISTANCES ARE SHOWN, AS MEASURED IN THE FIELD, WITH TIES TO WELLS MEASURED PERPENDICULAR TO SECTION LINES.

I, TERRY D. SANDERS, A LICENSED PROFESSIONAL LAND SURVEYOR IN THE STATE OF COLORADO DO HEREBY CERTIFY TO **KERR-MCGEE OIL & GAS ONSHORE LP**, THAT THE SURVEY AND WELL LOCATION CERTIFICATE SHOWN HEREON WERE DONE BY ME OR UNDER MY DIRECT SUPERVISION AND THAT THE DRAWING SHOWN HEREON ACCURATELY DEPICTS THE PROPOSED LOCATION OF THE WELL. THIS CERTIFICATE DOES NOT REPRESENT A LAND SURVEY PLAT OR IMPROVEMENT SURVEY PLAT AS DEFINED BY C.R.S. 38-51-102 AND CANNOT BE RELIED UPON TO DETERMINE OWNERSHIP.

Terry D. Sanders
 30120
 TERRY D. SANDERS, PLS 30120
 COLORADO LICENSED PROFESSIONAL LAND SURVEYOR
 FOR AND ON BEHALF OF P.F.S., LLC

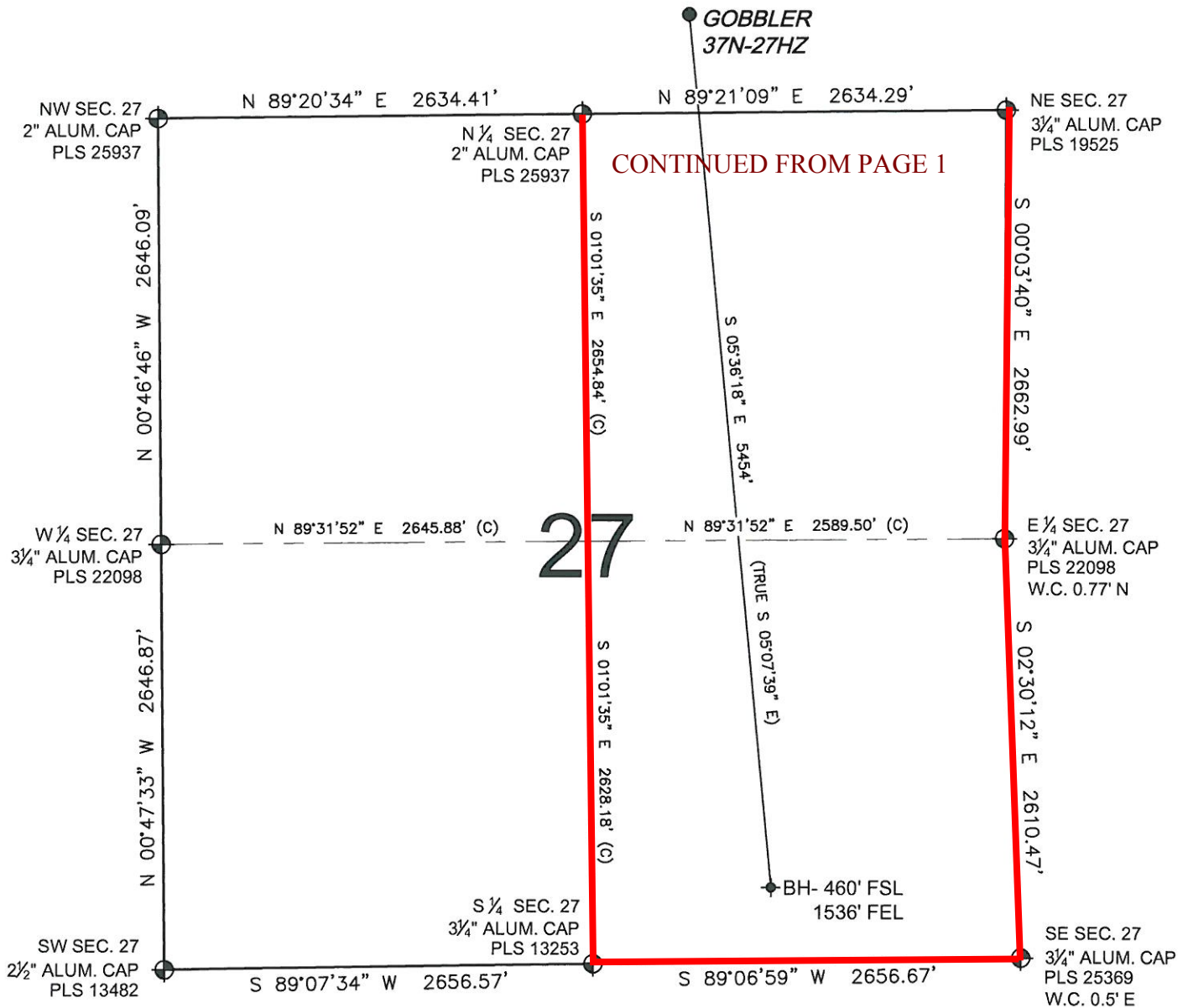


SHEET 1 OF 2

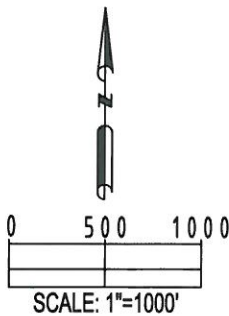
PREPARED BY: Petroleum Field Services, LLC 1801 W. 13th Ave. Denver, CO 80204	FIELD DATE: 03-23-12	SURFACE LOCATION: SW 1/4 SE 1/4, SEC. 22, T2N, R66W, 6TH P.M.
	DRAWING DATE: 03-29-12	WELD COUNTY, COLORADO
	BY: SMF	

NOTICE: ACCORDING TO COLORADO LAW YOU MUST COMMENCE ANY LEGAL ACTION BASED UPON ANY DEFECT IN THIS SURVEY WITHIN THREE YEARS AFTER YOU FIRST DISCOVER SUCH DEFECT. IN NO EVENT MAY ANY ACTION BASED UPON ANY DEFECT IN THIS SURVEY BE COMMENCED MORE THAN TEN YEARS FROM THIS SAID DATE OF THIS CERTIFICATION SHOWN HEREON.

WELL LOCATION CERTIFICATE: GOBBLER 37N-27HZ



- NOTES:**
1. THIS FIELD SURVEY CONFORMS TO THE MINIMUM STANDARDS SET BY THE C.O.G.C.C., RULE NO. 215
 2. HORIZONTAL POSITIONS AND ORTHOMETRIC ELEVATIONS SHOWN AT THE WELL HEAD, ARE BASED ON GPS-RTK POSITIONS DERIVED FROM MINIMUM 2-HOUR STATIC OBSERVATIONS CORRECTED BY THE NATIONAL GEODETIC SURVEY ONLINE POSITIONING USER SERVICE, O.P.U.S. DATUM: HORIZONTAL = NAD83/2007, VERTICAL = NAVD88
 3. THE BASIS OF BEARINGS ARE STATE PLANE COORDINATE SYSTEM GRID BEARINGS SHOWN HEREON BETWEEN THE DESCRIBED THE MONUMENTS SHOWN HEREON.
 4. GRID DISTANCES ARE SHOWN, AS MEASURED IN THE FIELD, WITH TIES TO WELLS MEASURED PERPENDICULAR TO SECTION LINES.



LEGEND

- ⊕ = EXISTING MONUMENT
- = PROPOSED WELL
- ◆ = EXISTING WELL
- BH = BOTTOM HOLE

TERRY D. SANDERS
 REGISTERED PROFESSIONAL LAND SURVEYOR
 COLORADO LICENSE NO. 30120
 FOR AND ON BEHALF OF P.F.S., LLC

SHEET 2 OF 2

PREPARED BY: PFS Petroleum Field Services, LLC 1801 W. 13th Ave. Denver, CO 80204	FIELD DATE: 03-23-12	SURFACE LOCATION: SW 1/4 SE 1/4, SEC. 22, T2N, R66W, 6TH P.M.
	DRAWING DATE: 03-29-12	
BY: SMF		WELD COUNTY, COLORADO

NOTICE: ACCORDING TO COLORADO LAW YOU MUST COMMENCE ANY LEGAL ACTION BASED UPON ANY DEFECT IN THIS SURVEY WITHIN THREE YEARS AFTER YOU FIRST DISCOVER SUCH DEFECT. IN NO EVENT MAY ANY ACTION BASED UPON ANY DEFECT IN THIS SURVEY BE COMMENCED MORE THAN TEN YEARS FROM THIS SAID DATE OF THIS CERTIFICATION SHOWN HEREON.