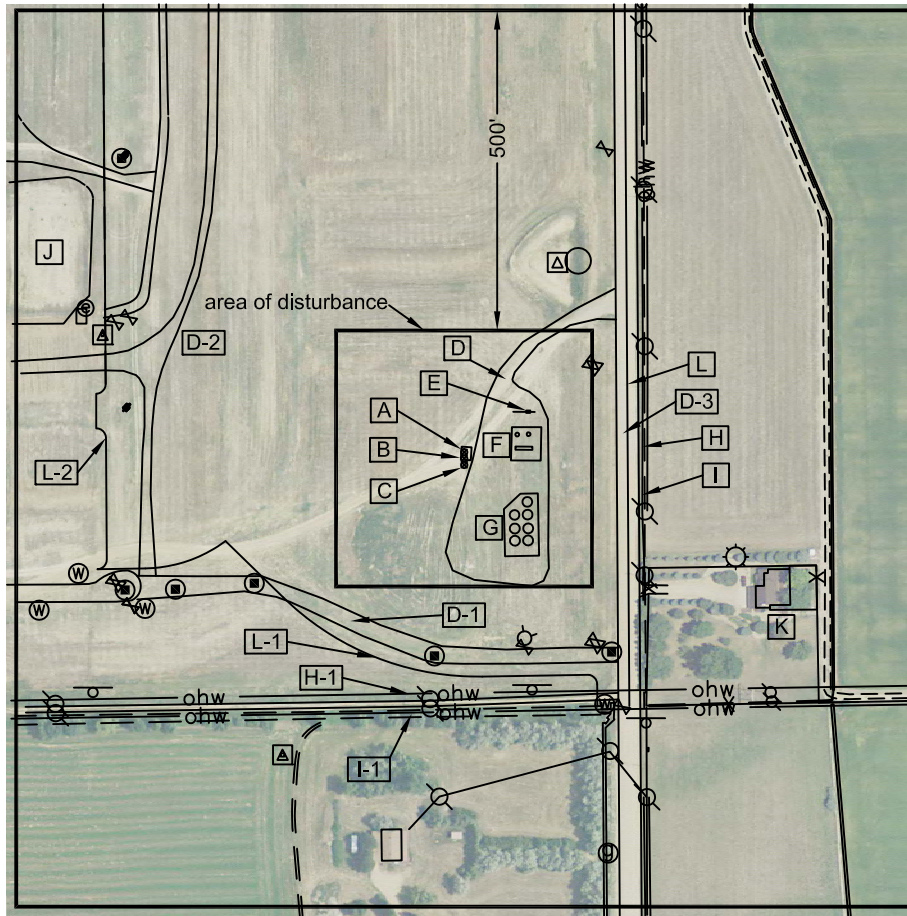


Location Drawing

Nearest:
 Building: 501' southeast
 Property Line: 255' east
 Above Ground Utility: 279' east
 Public Road: 239' east
 Railroad: 3,546' northwest

Existing Well Data:
 Frederiksen 1A-28H
 Latitude: N 40.19794°
 Longitude: W 104.99929°
 FNL: 2250'
 FEL: 255'
 ELEV: 4975'
 PDOP: 2.2

Field observations taken
 on 4/11/13 by operator
 John Rice.



**Distances listed below
 are measured from the
 existing Frederiksen 1A-28H well**

- [A] existing Frederiksen 1A-28H
- [B] proposed Frederiksen 1B-28H-H368, 10' south
- [C] proposed Frederiksen 1C-28H-H368, 20' south
- [D] access 140' northeast
- [D-1] access 298' southwest
- [D-2] access 486' northwest
- [D-3] Weld County Road 7, 239' east
- [E] meter hut 114' northeast (to be removed)
- [F] fenced in separators & combustors 73' east (to be removed)
- [G] fenced in tanks 109' southeast (to be removed)
- [H] overhead power lines 279' east
- [H-1] overhead power lines 376' south
- [I] ditch 276' east
- [I-1] ditch 407' south
- [J] pump house/retention pond, 635' northwest
- [K] building 501' southeast
- [K-1] building 597' southwest
- [L] property line 255' east
- [L-1] property line 349' southwest
- [L-2] property line 560' west

Legend:

- ⊙ - gas meter
- ⊕ - electric meter
- ⊗ - water meter
- ⚙ - water valve
- ⦿ - fire hydrant
- ⚡ - vault/riser
- ⚙ - power pole
- ⚙ - light pole
- ⊕ - sanitary manhole
- ⊕ - misc. manhole
- ⊕ - utility/gas sign
- X— - fence line
- ohw— - overhead power line

**Frederiksen 28H-H368
 Pad Location Drawing**

**Improvements extending
 500' from disturbance**

Township 3 North, Range 68 West,
 Section 28: SENE
 Weld County, Colorado

May 26, 2013

JR Land Surveying, LLC

8114 Northstar Drive
 Windsor, Colorado 80528
 P. 970-576-4641