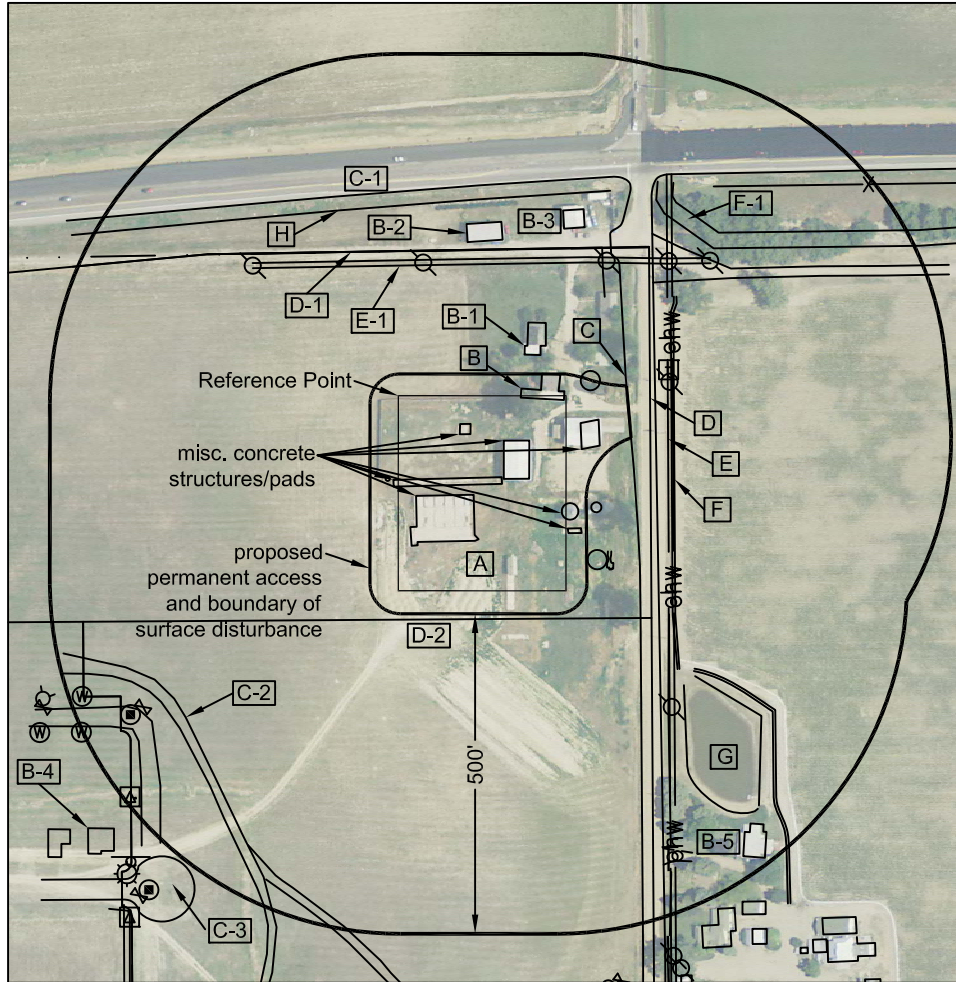


Location Drawing

Nearest:
 Building: 191' east
 Property Line: 226' north
 Above Ground Utility: 203' north
 Public Road: 318' north
 Railroad: 2,715' northwest



Reference Point Data:
 Northwest corner of the
 proposed facility pad
 Latitude: N 40.20350°
 Longitude: W 104.99979°
 FNL: 225'
 FEL: 393'
 ELEV: 4999'
 PDOP: 2.1

Field observations taken
 on 4/11/13 by operator
 John Rice.

**Distances listed below
 are measured from the
 Northwest corner of the
 proposed facility pad**

- [A] proposed facility pad
- [B] building 191' east (to be removed)
- [B-1] building 207' northeast (to be removed)
- [B-2] building 263' northeast (to be removed)
- [B-3] building 368' northeast (to be removed)
- [B-4] building 809' southwest
- [B-5] building 865' southeast
- [C] Weld County Road 7; 356' east
- [C-1] State HWY 66; 318' north
- [C-2] access 589' southwest
- [C-3] Stage Coach Dr. 806' southwest
- [D] property line 393' east
- [D-1] property line 226' north
- [D-2] property line 350' south
- [E] overhead power lines 421' east
- [E-1] overhead power lines 203' north
- [F] concrete ditch 427' east
- [F-1] ditch 503' northeast
- [G] retention pond 635' southeast
- [H] fence 296' north

Legend:

- ⊙ - gas meter
- ⊕ - electric meter
- ⊗ - water meter
- ⚡ - water valve
- ⊙ - fire hydrant
- ⊠ - vault/riser
- ⊕ - telephone riser
- ⊙ - power pole
- ⊙ - light pole
- ⊙ - sanitary manhole
- ⊙ - misc. manhole
- ⊙ - utility/gas sign
- x — - fence line
- ohw — - overhead power line

Frederiksen 28H-A368 & 28H-H368
 Proposed Facility Drawing

Improvements extending
 500' from disturbance

Township 3 North, Range 68 West,
 Section 28: NENE
 Weld County, Colorado

May 24, 2013

JR Land Surveying, LLC
 8114 Northstar Drive
 Windsor, Colorado 80528
 P. 970-576-4641