

KERR-MCGEE OIL & GAS ONSHORE LP

Location: COLORADO Slot: SLOTH04 HENRICKSON FEDERAL 35N-18HZ (1825' FSL & 2078' FWL, SEC.07)
Field: WELD COUNTY (KERR MCGEE) Well: HENRICKSON FEDERAL 35N-18HZ
Facility: SEC.07-T3N-R66W Wellbore: HENRICKSON FEDERAL 35N-18HZ PWB

Plot reference wellpath is HENRICKSON FEDERAL 35N-18HZ (PERMIT REV-1) PWP

True vertical depths are referenced to Rig on SLOTH04 HENRICKSON FEDERAL (1825' FSL & 2078' FWL, SEC.07) (RKB)
Measured depths are referenced to Rig on SLOTH04 HENRICKSON FEDERAL (1825' FSL & 2078' FWL, SEC.07) (RKB)
Rig on SLOTH04 HENRICKSON FEDERAL (1825' FSL & 2078' FWL, SEC.07) (RKB) to Mean Sea Level: 4811 feet
Mean Sea Level to Mud line (A Slot: SLOTH04 HENRICKSON FEDERAL 35N-18HZ (1825' FSL & 2078' FWL, SEC.07)): 0 feet
Coordinates are in feet referenced to Slot
Grid System: NAD83 / Lambert Colorado SP, Northern Zone (50.1), US feet
North Reference: True north
Scale: True distance
Depths are in feet
Created by preclin on 5/24/2013

Location Information

| Facility Name | | | | Grid East (US ft) | Grid North (US ft) | Latitude | Longitude |
|---|--------------|--------------|-------------------|--------------------|--------------------|----------------|----------------|
| SEC.07-T3N-R66W | | | | 31807.403 | 132034.760 | 40°12'54.887N | 104°40'23.127W |
| Size | Local N (ft) | Local E (ft) | Grid East (US ft) | Grid North (US ft) | Latitude | Longitude | |
| SLOTH04 HENRICKSON FEDERAL 35N-18HZ (1825' FSL & 2078' FWL, SEC.07) | 1825.10 | 4204.10 | 31807.503 | 132034.861 | 40°12'54.887N | 104°40'23.127W | |
| Rig on SLOTH04 HENRICKSON FEDERAL (1825' FSL & 2078' FWL, SEC.07) (RKB) to Mean Sea Level (A Slot: SLOTH04 HENRICKSON FEDERAL 35N-18HZ (1825' FSL & 2078' FWL, SEC.07)) | | | | | | 4811 | |
| Mean Sea Level to Mud line (A Slot: SLOTH04 HENRICKSON FEDERAL 35N-18HZ (1825' FSL & 2078' FWL, SEC.07)) | | | | | | 0 | |
| Rig on SLOTH04 HENRICKSON FEDERAL (1825' FSL & 2078' FWL, SEC.07) (RKB) to Mean Sea Level | | | | | | 4811 | |

Survey Program

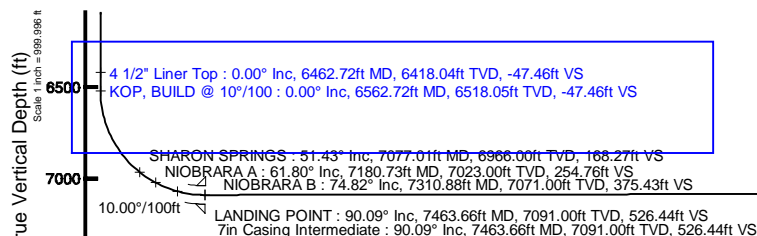
| Start MD (ft) | End MD (ft) | Tool | Model | Log Name/Comment | Wellbore |
|---------------|-------------|---------|-------------------|------------------|---------------------------------|
| 17.00 | 7463.66 | NavTrak | NavTrak (MagCorr) | | HENRICKSON FEDERAL 35N-18HZ PWB |
| 7463.66 | 13597.72 | OnTrak | OnTrak (MagCorr) | | HENRICKSON FEDERAL 35N-18HZ PWB |

Well Profile Data

| Design Comment | MD (ft) | Inc (°) | Az (°) | TVD (ft) | Local N (ft) | Local E (ft) | DLS (°/100ft) | VS (ft) |
|----------------------|----------|---------|---------|----------|--------------|--------------|---------------|---------|
| TIE-ON | 17.00 | 0.000 | 275.000 | 17.00 | 0.00 | 0.00 | 0.00 | 0.00 |
| BEGIN NUDGE | 1100.00 | 0.000 | 275.000 | 1100.00 | 0.00 | 0.00 | 0.00 | 0.00 |
| END NUDGE | 1600.00 | 10.000 | 275.000 | 1597.47 | 3.79 | -43.36 | 2.00 | -3.83 |
| BEGIN DROP | 4207.14 | 10.000 | 275.000 | 4165.00 | 43.25 | -494.36 | 0.00 | -43.63 |
| END DROP | 4707.14 | 0.000 | 179.956 | 4662.47 | 47.04 | -537.72 | 2.00 | -47.46 |
| KOP, BUILD @ 10°/100 | 6562.72 | 0.000 | 179.956 | 6518.05 | 47.04 | -537.72 | 0.00 | -47.46 |
| LANDING POINT | 7463.66 | 90.093 | 179.956 | 7091.00 | -526.85 | -537.27 | 10.00 | 526.44 |
| TOTAL DEPTH | 13597.72 | 90.093 | 179.956 | 7081.00 | -6660.90 | -532.53 | 0.00 | 6660.49 |

Targets

| Name | MD (ft) | TVD (ft) | Local N (ft) | Local E (ft) | Grid East (US ft) | Grid North (US ft) | Latitude | Longitude |
|---|----------|----------|--------------|--------------|-------------------|--------------------|----------------|----------------|
| SEC.07-T3N-R66W HARD LINES (460' SET BACKS) | 4811.00 | -47.78 | -1265.28 | 3187895.01 | 1320743.58 | 40°14'11.713N | 104°40'23.127W | |
| SEC.07-T3N-R66W SECTION LINES | 4811.00 | -47.78 | -1265.28 | 3187895.01 | 1320743.58 | 40°14'11.713N | 104°40'23.127W | |
| SEC.18-T3N-R66W HARD LINES (460' SET BACKS) | 4811.00 | -47.78 | -1265.27 | 3187895.01 | 1320743.58 | 40°14'11.713N | 104°40'23.127W | |
| SEC.18-T3N-R66W SECTION LINES | 4811.00 | -47.78 | -1265.27 | 3187895.01 | 1320743.58 | 40°14'11.713N | 104°40'23.127W | |
| HENRICKSON FEDERAL 35N-18HZ BHL ON PLAT (460' FSL & 1545' FWL, SEC. 18) REV-1 | 13597.72 | 7081.00 | -6660.90 | -532.53 | 3186877.92 | 1320176.55 | 40°13'06.756N | 104°40'23.057W |

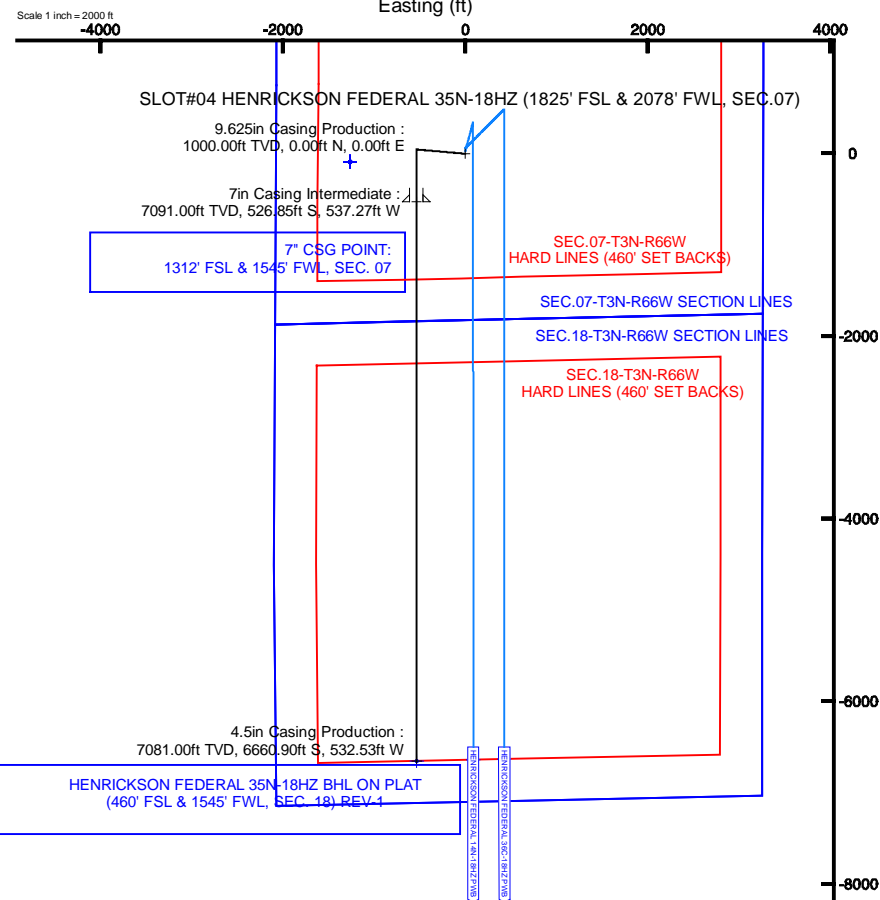


Vertical Section (ft)
Azimuth 179.96° with reference 0.00 N, 0.00 E



BGM (1945.0 to 2014.0) Dip: 66.81° Field: 52735.9 nT
Magnetic North is 8.67 degrees East of True North (at 5/23/2013)

To correct azimuth from Magnetic to True add 8.67 degrees
For example: if the Magnetic North Azimuth = 90 degrees, then the True North Azimuth = 90 + 8.67 = 98.67



HENRICKSON FEDERAL 35N-18HZ BHL ON PLAT (460' FSL & 1545' FWL, SEC. 18) REV-1
TOTAL DEPTH : 90.09° Inc, 13597.72ft MD, 7081.00ft TVD, 6660.49ft VS
4.5in Casing Production : 90.09° Inc, 13597.72ft MD, 7081.00ft TVD, 6660.49ft VS

Scale 1 inch = 1000 ft



Planned Wellpath Report

HENRICKSON FEDERAL 35N-18HZ (PERMIT REV-1) PWP

Page 1 of 7



| REFERENCE WELLPATH IDENTIFICATION | | | |
|-----------------------------------|---------------------------------|----------|---|
| Operator | KERR-MCGEE OIL & GAS ONSHORE LP | Slot | SLOT#04 HENRICKSON FEDERAL 35N-18HZ (1825' FSL & 2078' FWL, SEC.07) |
| Area | COLORADO | Well | HENRICKSON FEDERAL 35N-18HZ |
| Field | WELD COUNTY (KERR MCGEE) | Wellbore | HENRICKSON FEDERAL 35N-18HZ PWB |
| Facility | SEC.07-T3N-R66W | | |

| REPORT SETUP INFORMATION | | | |
|--------------------------|---|----------------------|---|
| Projection System | NAD83 / Lambert Colorado SP, Northern Zone (501), US feet | Software System | WellArchitect@ 3.0.2 |
| North Reference | True | User | Precain |
| Scale | 0.999957 | Report Generated | 5/24/2013 at 7:52:05 PM |
| Convergence at slot | 0.44° East | Database/Source file | WellArchitectDB/HENRICKSON_FEDERAL_35N-18HZ_PWB.xml |

| WELLPATH LOCATION | | | | | | |
|-----------------------|-------------------|----------|------------------|-----------------|------------------------|-----------------|
| | Local coordinates | | Grid coordinates | | Geographic coordinates | |
| | North[ft] | East[ft] | Easting[US ft] | Northing[US ft] | Latitude | Longitude |
| Slot Location | 1811.16 | -624.10 | 3189159.52 | 1329841.02 | 40°14'12.581"N | 104°49'20.788"W |
| Facility Reference Pt | | | 3189797.46 | 1328034.78 | 40°13'54.683"N | 104°49'12.741"W |
| Field Reference Pt | | | 3197771.84 | 1268891.29 | 40°04'09.600"N | 104°47'36.000"W |

| WELLPATH DATUM | | | |
|--------------------------|---|--|--|
| Calculation method | Minimum curvature | Rig on SLOT#04 HENRICKSON FEDERAL (1825' FSL & 2078' FWL, SEC.07) (RKB) to Facility Vertical Datum | |
| Horizontal Reference Pt | Slot | Rig on SLOT#04 HENRICKSON FEDERAL (1825' FSL & 2078' FWL, SEC.07) (RKB) to Mean Sea Level | |
| Vertical Reference Pt | Rig on SLOT#04 HENRICKSON FEDERAL (1825' FSL & 2078' FWL, SEC.07) (RKB) | Rig on SLOT#04 HENRICKSON FEDERAL (1825' FSL & 2078' FWL, SEC.07) (RKB) to Mud Line at Slot (SLOT#04 HENRICKSON FEDERAL (1825' FSL & 2078' FWL, SEC.07) (RKB)) | |
| MD Reference Pt | Rig on SLOT#04 HENRICKSON FEDERAL (1825' FSL & 2078' FWL, SEC.07) (RKB) | Section Origin | |
| Field Vertical Reference | Mean Sea Level | Section Azimuth | |



Planned Wellpath Report

HENRICKSON FEDERAL 35N-18HZ (PERMIT REV-1) PWP

Page 2 of 7



REFERENCE WELLPATH IDENTIFICATION

| | | | |
|----------|---------------------------------|----------|---|
| Operator | KERR-MCGEE OIL & GAS ONSHORE LP | Slot | SLOT#04 HENRICKSON FEDERAL 35N-18HZ (1825' FSL & 2078' FWL, SEC.07) |
| Area | COLORADO | Well | HENRICKSON FEDERAL 35N-18HZ |
| Field | WELD COUNTY (KERR MCGEE) | Wellbore | HENRICKSON FEDERAL 35N-18HZ PWB |
| Facility | SEC.07-T3N-R66W | | |

WELLPATH DATA (150 stations) † = interpolated/extrapolated station

| MD [ft] | Inclination [°] | Azimuth [°] | TVD [ft] | Vert Sect [ft] | North [ft] | East [ft] | Latitude | Longitude | DLS [°/100ft] | Comments |
|------------|--------------------|----------------|-------------|-------------------|---------------|--------------|----------------|-----------------|------------------|----------------|
| 0.00† | 0.000 | 275.000 | 0.00 | 0.00 | 0.00 | 0.00 | 40°14'12.581"N | 104°49'20.788"W | 0.00 | |
| 17.00 | 0.000 | 275.000 | 17.00 | 0.00 | 0.00 | 0.00 | 40°14'12.581"N | 104°49'20.788"W | 0.00 | TIE-ON |
| 117.00† | 0.000 | 275.000 | 117.00 | 0.00 | 0.00 | 0.00 | 40°14'12.581"N | 104°49'20.788"W | 0.00 | |
| 217.00† | 0.000 | 275.000 | 217.00 | 0.00 | 0.00 | 0.00 | 40°14'12.581"N | 104°49'20.788"W | 0.00 | |
| 317.00† | 0.000 | 275.000 | 317.00 | 0.00 | 0.00 | 0.00 | 40°14'12.581"N | 104°49'20.788"W | 0.00 | |
| 417.00† | 0.000 | 275.000 | 417.00 | 0.00 | 0.00 | 0.00 | 40°14'12.581"N | 104°49'20.788"W | 0.00 | |
| 517.00† | 0.000 | 275.000 | 517.00 | 0.00 | 0.00 | 0.00 | 40°14'12.581"N | 104°49'20.788"W | 0.00 | FOX HILLS BASE |
| 617.00† | 0.000 | 275.000 | 617.00 | 0.00 | 0.00 | 0.00 | 40°14'12.581"N | 104°49'20.788"W | 0.00 | |
| 717.00† | 0.000 | 275.000 | 717.00 | 0.00 | 0.00 | 0.00 | 40°14'12.581"N | 104°49'20.788"W | 0.00 | |
| 817.00† | 0.000 | 275.000 | 817.00 | 0.00 | 0.00 | 0.00 | 40°14'12.581"N | 104°49'20.788"W | 0.00 | |
| 917.00† | 0.000 | 275.000 | 917.00 | 0.00 | 0.00 | 0.00 | 40°14'12.581"N | 104°49'20.788"W | 0.00 | |
| 1017.00† | 0.000 | 275.000 | 1017.00 | 0.00 | 0.00 | 0.00 | 40°14'12.581"N | 104°49'20.788"W | 0.00 | |
| 1100.00 | 0.000 | 275.000 | 1100.00 | 0.00 | 0.00 | 0.00 | 40°14'12.581"N | 104°49'20.788"W | 0.00 | BEGIN NUDGE |
| 1117.00† | 0.340 | 275.000 | 1117.00 | 0.00 | 0.00 | -0.05 | 40°14'12.581"N | 104°49'20.789"W | 2.00 | |
| 1217.00† | 2.340 | 275.000 | 1216.97 | -0.21 | 0.21 | -2.38 | 40°14'12.583"N | 104°49'20.819"W | 2.00 | |
| 1317.00† | 4.340 | 275.000 | 1316.79 | -0.72 | 0.72 | -8.18 | 40°14'12.588"N | 104°49'20.894"W | 2.00 | |
| 1417.00† | 6.340 | 275.000 | 1416.35 | -1.54 | 1.53 | -17.45 | 40°14'12.596"N | 104°49'21.013"W | 2.00 | |
| 1517.00† | 8.340 | 275.000 | 1515.53 | -2.66 | 2.64 | -30.18 | 40°14'12.607"N | 104°49'21.177"W | 2.00 | |
| 1600.00 | 10.000 | 275.000 | 1597.47 | -3.83 | 3.79 | -43.36 | 40°14'12.618"N | 104°49'21.347"W | 2.00 | END NUDGE |
| 1617.00† | 10.000 | 275.000 | 1614.21 | -4.09 | 4.05 | -46.30 | 40°14'12.621"N | 104°49'21.385"W | 0.00 | |
| 1717.00† | 10.000 | 275.000 | 1712.69 | -5.61 | 5.56 | -63.60 | 40°14'12.636"N | 104°49'21.608"W | 0.00 | |
| 1817.00† | 10.000 | 275.000 | 1811.17 | -7.14 | 7.08 | -80.90 | 40°14'12.651"N | 104°49'21.831"W | 0.00 | |
| 1917.00† | 10.000 | 275.000 | 1909.65 | -8.67 | 8.59 | -98.19 | 40°14'12.666"N | 104°49'22.054"W | 0.00 | |
| 2017.00† | 10.000 | 275.000 | 2008.13 | -10.19 | 10.10 | -115.49 | 40°14'12.681"N | 104°49'22.277"W | 0.00 | |
| 2117.00† | 10.000 | 275.000 | 2106.61 | -11.72 | 11.62 | -132.79 | 40°14'12.696"N | 104°49'22.500"W | 0.00 | |
| 2217.00† | 10.000 | 275.000 | 2205.09 | -13.25 | 13.13 | -150.09 | 40°14'12.711"N | 104°49'22.723"W | 0.00 | |
| 2317.00† | 10.000 | 275.000 | 2303.57 | -14.77 | 14.64 | -167.39 | 40°14'12.726"N | 104°49'22.946"W | 0.00 | |
| 2417.00† | 10.000 | 275.000 | 2402.05 | -16.30 | 16.16 | -184.69 | 40°14'12.741"N | 104°49'23.169"W | 0.00 | |
| 2517.00† | 10.000 | 275.000 | 2500.53 | -17.83 | 17.67 | -201.99 | 40°14'12.756"N | 104°49'23.392"W | 0.00 | |
| 2617.00† | 10.000 | 275.000 | 2599.01 | -19.35 | 19.18 | -219.29 | 40°14'12.771"N | 104°49'23.616"W | 0.00 | |
| 2717.00† | 10.000 | 275.000 | 2697.50 | -20.88 | 20.70 | -236.58 | 40°14'12.786"N | 104°49'23.839"W | 0.00 | |
| 2817.00† | 10.000 | 275.000 | 2795.98 | -22.41 | 22.21 | -253.88 | 40°14'12.800"N | 104°49'24.062"W | 0.00 | |
| 2917.00† | 10.000 | 275.000 | 2894.46 | -23.93 | 23.73 | -271.18 | 40°14'12.815"N | 104°49'24.285"W | 0.00 | |
| 3017.00† | 10.000 | 275.000 | 2992.94 | -25.46 | 25.24 | -288.48 | 40°14'12.830"N | 104°49'24.508"W | 0.00 | |
| 3117.00† | 10.000 | 275.000 | 3091.42 | -26.99 | 26.75 | -305.78 | 40°14'12.845"N | 104°49'24.731"W | 0.00 | |
| 3217.00† | 10.000 | 275.000 | 3189.90 | -28.51 | 28.27 | -323.08 | 40°14'12.860"N | 104°49'24.954"W | 0.00 | |
| 3317.00† | 10.000 | 275.000 | 3288.38 | -30.04 | 29.78 | -340.38 | 40°14'12.875"N | 104°49'25.177"W | 0.00 | |
| 3417.00† | 10.000 | 275.000 | 3386.86 | -31.57 | 31.29 | -357.68 | 40°14'12.890"N | 104°49'25.400"W | 0.00 | |
| 3517.00† | 10.000 | 275.000 | 3485.34 | -33.09 | 32.81 | -374.97 | 40°14'12.905"N | 104°49'25.623"W | 0.00 | |
| 3617.00† | 10.000 | 275.000 | 3583.82 | -34.62 | 34.32 | -392.27 | 40°14'12.920"N | 104°49'25.846"W | 0.00 | |
| 3717.00† | 10.000 | 275.000 | 3682.30 | -36.15 | 35.83 | -409.57 | 40°14'12.935"N | 104°49'26.069"W | 0.00 | |
| 3817.00† | 10.000 | 275.000 | 3780.78 | -37.67 | 37.35 | -426.87 | 40°14'12.950"N | 104°49'26.292"W | 0.00 | |
| 3843.62† | 10.000 | 275.000 | 3807.00 | -38.08 | 37.75 | -431.47 | 40°14'12.954"N | 104°49'26.352"W | 0.00 | PARKMAN |
| 3917.00† | 10.000 | 275.000 | 3879.26 | -39.20 | 38.86 | -444.17 | 40°14'12.965"N | 104°49'26.515"W | 0.00 | |
| 4017.00† | 10.000 | 275.000 | 3977.75 | -40.73 | 40.37 | -461.47 | 40°14'12.980"N | 104°49'26.738"W | 0.00 | |

REFERENCE WELLPATH IDENTIFICATION

| | | | |
|----------|---------------------------------|----------|---|
| Operator | KERR-MCGEE OIL & GAS ONSHORE LP | Slot | SLOT#04 HENRICKSON FEDERAL 35N-18HZ (1825' FSL & 2078' FWL, SEC.07) |
| Area | COLORADO | Well | HENRICKSON FEDERAL 35N-18HZ |
| Field | WELD COUNTY (KERR MCGEE) | Wellbore | HENRICKSON FEDERAL 35N-18HZ PWB |
| Facility | SEC.07-T3N-R66W | | |

WELLPATH DATA (150 stations) † = interpolated/extrapolated station

| MD [ft] | Inclination [°] | Azimuth [°] | TVD [ft] | Vert Sect [ft] | North [ft] | East [ft] | Latitude | Longitude | DLS [°/100ft] | Comments |
|------------|--------------------|----------------|-------------|-------------------|---------------|--------------|----------------|-----------------|------------------|----------------------|
| 4117.00† | 10.000 | 275.000 | 4076.23 | -42.25 | 41.89 | -478.77 | 40°14'12.995"N | 104°49'26.961"W | 0.00 | |
| 4207.14 | 10.000 | 275.000 | 4165.00 | -43.63 | 43.25 | -494.36 | 40°14'13.008"N | 104°49'27.162"W | 0.00 | BEGIN DROP |
| 4217.00† | 9.803 | 275.000 | 4174.71 | -43.78 | 43.40 | -496.05 | 40°14'13.010"N | 104°49'27.184"W | 2.00 | |
| 4294.25† | 8.258 | 275.000 | 4251.00 | -44.85 | 44.46 | -508.13 | 40°14'13.020"N | 104°49'27.340"W | 2.00 | SUSSEX |
| 4317.00† | 7.803 | 275.000 | 4273.53 | -45.12 | 44.73 | -511.29 | 40°14'13.023"N | 104°49'27.381"W | 2.00 | |
| 4417.00† | 5.803 | 275.000 | 4372.82 | -46.17 | 45.76 | -523.09 | 40°14'13.033"N | 104°49'27.533"W | 2.00 | |
| 4517.00† | 3.803 | 275.000 | 4472.46 | -46.90 | 46.49 | -531.43 | 40°14'13.040"N | 104°49'27.640"W | 2.00 | |
| 4617.00† | 1.803 | 275.000 | 4572.34 | -47.33 | 46.92 | -536.30 | 40°14'13.045"N | 104°49'27.703"W | 2.00 | |
| 4707.14 | 0.000 | 179.956 | 4662.47 | -47.46 | 47.04 | -537.72 | 40°14'13.046"N | 104°49'27.721"W | 2.00 | END DROP |
| 4717.00† | 0.000 | 179.956 | 4672.32 | -47.46 | 47.04 | -537.72 | 40°14'13.046"N | 104°49'27.721"W | 0.00 | |
| 4817.00† | 0.000 | 179.956 | 4772.32 | -47.46 | 47.04 | -537.72 | 40°14'13.046"N | 104°49'27.721"W | 0.00 | |
| 4917.00† | 0.000 | 179.956 | 4872.32 | -47.46 | 47.04 | -537.72 | 40°14'13.046"N | 104°49'27.721"W | 0.00 | |
| 5017.00† | 0.000 | 179.956 | 4972.32 | -47.46 | 47.04 | -537.72 | 40°14'13.046"N | 104°49'27.721"W | 0.00 | |
| 5117.00† | 0.000 | 179.956 | 5072.32 | -47.46 | 47.04 | -537.72 | 40°14'13.046"N | 104°49'27.721"W | 0.00 | |
| 5217.00† | 0.000 | 179.956 | 5172.32 | -47.46 | 47.04 | -537.72 | 40°14'13.046"N | 104°49'27.721"W | 0.00 | |
| 5317.00† | 0.000 | 179.956 | 5272.32 | -47.46 | 47.04 | -537.72 | 40°14'13.046"N | 104°49'27.721"W | 0.00 | |
| 5417.00† | 0.000 | 179.956 | 5372.32 | -47.46 | 47.04 | -537.72 | 40°14'13.046"N | 104°49'27.721"W | 0.00 | |
| 5517.00† | 0.000 | 179.956 | 5472.32 | -47.46 | 47.04 | -537.72 | 40°14'13.046"N | 104°49'27.721"W | 0.00 | |
| 5617.00† | 0.000 | 179.956 | 5572.32 | -47.46 | 47.04 | -537.72 | 40°14'13.046"N | 104°49'27.721"W | 0.00 | |
| 5717.00† | 0.000 | 179.956 | 5672.32 | -47.46 | 47.04 | -537.72 | 40°14'13.046"N | 104°49'27.721"W | 0.00 | |
| 5817.00† | 0.000 | 179.956 | 5772.32 | -47.46 | 47.04 | -537.72 | 40°14'13.046"N | 104°49'27.721"W | 0.00 | |
| 5917.00† | 0.000 | 179.956 | 5872.32 | -47.46 | 47.04 | -537.72 | 40°14'13.046"N | 104°49'27.721"W | 0.00 | |
| 6017.00† | 0.000 | 179.956 | 5972.32 | -47.46 | 47.04 | -537.72 | 40°14'13.046"N | 104°49'27.721"W | 0.00 | |
| 6117.00† | 0.000 | 179.956 | 6072.32 | -47.46 | 47.04 | -537.72 | 40°14'13.046"N | 104°49'27.721"W | 0.00 | |
| 6217.00† | 0.000 | 179.956 | 6172.32 | -47.46 | 47.04 | -537.72 | 40°14'13.046"N | 104°49'27.721"W | 0.00 | |
| 6317.00† | 0.000 | 179.956 | 6272.32 | -47.46 | 47.04 | -537.72 | 40°14'13.046"N | 104°49'27.721"W | 0.00 | |
| 6417.00† | 0.000 | 179.956 | 6372.32 | -47.46 | 47.04 | -537.72 | 40°14'13.046"N | 104°49'27.721"W | 0.00 | |
| 6462.72† | 0.000 | 179.956 | 6418.04 | -47.46 | 47.04 | -537.72 | 40°14'13.046"N | 104°49'27.721"W | 0.00 | 4 1/2" Liner Top |
| 6517.00† | 0.000 | 179.956 | 6472.32 | -47.46 | 47.04 | -537.72 | 40°14'13.046"N | 104°49'27.721"W | 0.00 | |
| 6562.72 | 0.000 | 179.956 | 6518.05 | -47.46 | 47.04 | -537.72 | 40°14'13.046"N | 104°49'27.721"W | 0.00 | KOP. BUILD @ 10°/100 |
| 6617.00† | 5.428 | 179.956 | 6572.24 | -44.89 | 44.48 | -537.71 | 40°14'13.020"N | 104°49'27.721"W | 10.00 | |
| 6717.00† | 15.428 | 179.956 | 6670.46 | -26.81 | 26.40 | -537.70 | 40°14'12.842"N | 104°49'27.721"W | 10.00 | |
| 6817.00† | 25.428 | 179.956 | 6764.06 | 8.05 | -8.46 | -537.67 | 40°14'12.497"N | 104°49'27.721"W | 10.00 | |
| 6917.00† | 35.428 | 179.956 | 6850.17 | 58.63 | -59.04 | -537.63 | 40°14'11.998"N | 104°49'27.720"W | 10.00 | |
| 7017.00† | 45.428 | 179.956 | 6926.20 | 123.39 | -123.81 | -537.58 | 40°14'11.357"N | 104°49'27.720"W | 10.00 | |
| 7077.01† | 51.428 | 179.956 | 6966.00 | 168.27 | -168.68 | -537.55 | 40°14'10.914"N | 104°49'27.719"W | 10.00 | SHARON SPRINGS |
| 7117.00† | 55.428 | 179.956 | 6989.83 | 200.38 | -200.79 | -537.53 | 40°14'10.597"N | 104°49'27.719"W | 10.00 | |
| 7180.73† | 61.801 | 179.956 | 7023.00 | 254.76 | -255.17 | -537.48 | 40°14'10.059"N | 104°49'27.718"W | 10.00 | NIOBRARA A |
| 7217.00† | 65.428 | 179.956 | 7039.11 | 287.24 | -287.65 | -537.46 | 40°14'09.738"N | 104°49'27.718"W | 10.00 | |
| 7310.88† | 74.816 | 179.956 | 7071.00 | 375.43 | -375.84 | -537.39 | 40°14'08.867"N | 104°49'27.717"W | 10.00 | NIOBRARA B |
| 7317.00† | 75.428 | 179.956 | 7072.57 | 381.34 | -381.76 | -537.39 | 40°14'08.808"N | 104°49'27.717"W | 10.00 | |
| 7417.00† | 85.428 | 179.956 | 7089.18 | 479.83 | -480.24 | -537.31 | 40°14'07.835"N | 104°49'27.716"W | 10.00 | |
| 7463.66 | 90.093 | 179.956 | 7091.00 | 526.44 | -526.85 | -537.27 | 40°14'07.375"N | 104°49'27.716"W | 10.00 | LANDING POINT |
| 7517.00† | 90.093 | 179.956 | 7090.92 | 579.78 | -580.19 | -537.23 | 40°14'06.848"N | 104°49'27.715"W | 0.00 | |
| 7617.00† | 90.093 | 179.956 | 7090.75 | 679.78 | -680.19 | -537.15 | 40°14'05.859"N | 104°49'27.714"W | 0.00 | |



Planned Wellpath Report

HENRICKSON FEDERAL 35N-18HZ (PERMIT REV-1) PWP

Page 4 of 7



REFERENCE WELLPATH IDENTIFICATION

| | | | |
|----------|---------------------------------|----------|---|
| Operator | KERR-MCGEE OIL & GAS ONSHORE LP | Slot | SLOT#04 HENRICKSON FEDERAL 35N-18HZ (1825' FSL & 2078' FWL, SEC.07) |
| Area | COLORADO | Well | HENRICKSON FEDERAL 35N-18HZ |
| Field | WELD COUNTY (KERR MCGEE) | Wellbore | HENRICKSON FEDERAL 35N-18HZ PWB |
| Facility | SEC.07-T3N-R66W | | |

WELLPATH DATA (150 stations) † = interpolated/extrapolated station

| MD [ft] | Inclination [°] | Azimuth [°] | TVD [ft] | Vert Sect [ft] | North [ft] | East [ft] | Latitude | Longitude | DLS [°/100ft] | Comments |
|------------|--------------------|----------------|-------------|-------------------|---------------|--------------|----------------|-----------------|------------------|----------|
| 7717.00† | 90.093 | 179.956 | 7090.59 | 779.78 | -780.19 | -537.08 | 40°14'04.871"N | 104°49'27.713"W | 0.00 | |
| 7817.00† | 90.093 | 179.956 | 7090.43 | 879.78 | -880.19 | -537.00 | 40°14'03.883"N | 104°49'27.712"W | 0.00 | |
| 7917.00† | 90.093 | 179.956 | 7090.26 | 979.78 | -980.19 | -536.92 | 40°14'02.895"N | 104°49'27.711"W | 0.00 | |
| 8017.00† | 90.093 | 179.956 | 7090.10 | 1079.78 | -1080.19 | -536.85 | 40°14'01.907"N | 104°49'27.710"W | 0.00 | |
| 8117.00† | 90.093 | 179.956 | 7089.94 | 1179.78 | -1180.19 | -536.77 | 40°14'00.918"N | 104°49'27.709"W | 0.00 | |
| 8217.00† | 90.093 | 179.956 | 7089.77 | 1279.78 | -1280.19 | -536.69 | 40°13'59.930"N | 104°49'27.708"W | 0.00 | |
| 8317.00† | 90.093 | 179.956 | 7089.61 | 1379.78 | -1380.19 | -536.61 | 40°13'58.942"N | 104°49'27.707"W | 0.00 | |
| 8417.00† | 90.093 | 179.956 | 7089.45 | 1479.78 | -1480.19 | -536.54 | 40°13'57.954"N | 104°49'27.706"W | 0.00 | |
| 8517.00† | 90.093 | 179.956 | 7089.28 | 1579.78 | -1580.19 | -536.46 | 40°13'56.966"N | 104°49'27.705"W | 0.00 | |
| 8617.00† | 90.093 | 179.956 | 7089.12 | 1679.78 | -1680.19 | -536.38 | 40°13'55.977"N | 104°49'27.704"W | 0.00 | |
| 8717.00† | 90.093 | 179.956 | 7088.96 | 1779.78 | -1780.19 | -536.30 | 40°13'54.989"N | 104°49'27.703"W | 0.00 | |
| 8817.00† | 90.093 | 179.956 | 7088.80 | 1879.78 | -1880.19 | -536.23 | 40°13'54.001"N | 104°49'27.702"W | 0.00 | |
| 8917.00† | 90.093 | 179.956 | 7088.63 | 1979.78 | -1980.19 | -536.15 | 40°13'53.013"N | 104°49'27.701"W | 0.00 | |
| 9017.00† | 90.093 | 179.956 | 7088.47 | 2079.78 | -2080.19 | -536.07 | 40°13'52.025"N | 104°49'27.700"W | 0.00 | |
| 9117.00† | 90.093 | 179.956 | 7088.31 | 2179.78 | -2180.19 | -536.00 | 40°13'51.036"N | 104°49'27.699"W | 0.00 | |
| 9217.00† | 90.093 | 179.956 | 7088.14 | 2279.78 | -2280.19 | -535.92 | 40°13'50.048"N | 104°49'27.698"W | 0.00 | |
| 9317.00† | 90.093 | 179.956 | 7087.98 | 2379.78 | -2380.19 | -535.84 | 40°13'49.060"N | 104°49'27.697"W | 0.00 | |
| 9417.00† | 90.093 | 179.956 | 7087.82 | 2479.78 | -2480.19 | -535.76 | 40°13'48.072"N | 104°49'27.696"W | 0.00 | |
| 9517.00† | 90.093 | 179.956 | 7087.65 | 2579.78 | -2580.19 | -535.69 | 40°13'47.084"N | 104°49'27.695"W | 0.00 | |
| 9617.00† | 90.093 | 179.956 | 7087.49 | 2679.77 | -2680.19 | -535.61 | 40°13'46.096"N | 104°49'27.694"W | 0.00 | |
| 9717.00† | 90.093 | 179.956 | 7087.33 | 2779.77 | -2780.19 | -535.53 | 40°13'45.107"N | 104°49'27.693"W | 0.00 | |
| 9817.00† | 90.093 | 179.956 | 7087.16 | 2879.77 | -2880.19 | -535.46 | 40°13'44.119"N | 104°49'27.692"W | 0.00 | |
| 9917.00† | 90.093 | 179.956 | 7087.00 | 2979.77 | -2980.19 | -535.38 | 40°13'43.131"N | 104°49'27.690"W | 0.00 | |
| 10017.00† | 90.093 | 179.956 | 7086.84 | 3079.77 | -3080.19 | -535.30 | 40°13'42.143"N | 104°49'27.689"W | 0.00 | |
| 10117.00† | 90.093 | 179.956 | 7086.68 | 3179.77 | -3180.19 | -535.22 | 40°13'41.155"N | 104°49'27.688"W | 0.00 | |
| 10217.00† | 90.093 | 179.956 | 7086.51 | 3279.77 | -3280.19 | -535.15 | 40°13'40.166"N | 104°49'27.687"W | 0.00 | |
| 10317.00† | 90.093 | 179.956 | 7086.35 | 3379.77 | -3380.19 | -535.07 | 40°13'39.178"N | 104°49'27.686"W | 0.00 | |
| 10417.00† | 90.093 | 179.956 | 7086.19 | 3479.77 | -3480.19 | -534.99 | 40°13'38.190"N | 104°49'27.685"W | 0.00 | |
| 10517.00† | 90.093 | 179.956 | 7086.02 | 3579.77 | -3580.19 | -534.91 | 40°13'37.202"N | 104°49'27.684"W | 0.00 | |
| 10617.00† | 90.093 | 179.956 | 7085.86 | 3679.77 | -3680.19 | -534.84 | 40°13'36.214"N | 104°49'27.683"W | 0.00 | |
| 10717.00† | 90.093 | 179.956 | 7085.70 | 3779.77 | -3780.19 | -534.76 | 40°13'35.225"N | 104°49'27.682"W | 0.00 | |
| 10817.00† | 90.093 | 179.956 | 7085.53 | 3879.77 | -3880.19 | -534.68 | 40°13'34.237"N | 104°49'27.681"W | 0.00 | |
| 10917.00† | 90.093 | 179.956 | 7085.37 | 3979.77 | -3980.18 | -534.61 | 40°13'33.249"N | 104°49'27.680"W | 0.00 | |
| 11017.00† | 90.093 | 179.956 | 7085.21 | 4079.77 | -4080.18 | -534.53 | 40°13'32.261"N | 104°49'27.679"W | 0.00 | |
| 11117.00† | 90.093 | 179.956 | 7085.05 | 4179.77 | -4180.18 | -534.45 | 40°13'31.273"N | 104°49'27.678"W | 0.00 | |
| 11217.00† | 90.093 | 179.956 | 7084.88 | 4279.77 | -4280.18 | -534.37 | 40°13'30.284"N | 104°49'27.677"W | 0.00 | |
| 11317.00† | 90.093 | 179.956 | 7084.72 | 4379.77 | -4380.18 | -534.30 | 40°13'29.296"N | 104°49'27.676"W | 0.00 | |
| 11417.00† | 90.093 | 179.956 | 7084.56 | 4479.77 | -4480.18 | -534.22 | 40°13'28.308"N | 104°49'27.675"W | 0.00 | |
| 11517.00† | 90.093 | 179.956 | 7084.39 | 4579.77 | -4580.18 | -534.14 | 40°13'27.320"N | 104°49'27.674"W | 0.00 | |
| 11617.00† | 90.093 | 179.956 | 7084.23 | 4679.77 | -4680.18 | -534.06 | 40°13'26.332"N | 104°49'27.673"W | 0.00 | |
| 11717.00† | 90.093 | 179.956 | 7084.07 | 4779.77 | -4780.18 | -533.99 | 40°13'25.344"N | 104°49'27.672"W | 0.00 | |
| 11817.00† | 90.093 | 179.956 | 7083.90 | 4879.77 | -4880.18 | -533.91 | 40°13'24.355"N | 104°49'27.671"W | 0.00 | |
| 11917.00† | 90.093 | 179.956 | 7083.74 | 4979.77 | -4980.18 | -533.83 | 40°13'23.367"N | 104°49'27.670"W | 0.00 | |
| 12017.00† | 90.093 | 179.956 | 7083.58 | 5079.77 | -5080.18 | -533.76 | 40°13'22.379"N | 104°49'27.669"W | 0.00 | |
| 12117.00† | 90.093 | 179.956 | 7083.41 | 5179.77 | -5180.18 | -533.68 | 40°13'21.391"N | 104°49'27.668"W | 0.00 | |



Planned Wellpath Report

HENRICKSON FEDERAL 35N-18HZ (PERMIT REV-1) PWP

Page 5 of 7



REFERENCE WELLPATH IDENTIFICATION

| | | | |
|----------|---------------------------------|----------|---|
| Operator | KERR-MCGEE OIL & GAS ONSHORE LP | Slot | SLOT#04 HENRICKSON FEDERAL 35N-18HZ (1825' FSL & 2078' FWL, SEC.07) |
| Area | COLORADO | Well | HENRICKSON FEDERAL 35N-18HZ |
| Field | WELD COUNTY (KERR MCGEE) | Wellbore | HENRICKSON FEDERAL 35N-18HZ PWB |
| Facility | SEC.07-T3N-R66W | | |

WELLPATH DATA (150 stations) † = interpolated/extrapolated station

| MD [ft] | Inclination [°] | Azimuth [°] | TVD [ft] | Vert Sect [ft] | North [ft] | East [ft] | Latitude | Longitude | DLS [°/100ft] | Comments |
|------------|--------------------|----------------|----------------------|-------------------|---------------|--------------|----------------|-----------------|------------------|-------------|
| 12217.00† | 90.093 | 179.956 | 7083.25 | 5279.77 | -5280.18 | -533.60 | 40°13'20.403"N | 104°49'27.667"W | 0.00 | |
| 12317.00† | 90.093 | 179.956 | 7083.09 | 5379.77 | -5380.18 | -533.52 | 40°13'19.414"N | 104°49'27.666"W | 0.00 | |
| 12417.00† | 90.093 | 179.956 | 7082.93 | 5479.77 | -5480.18 | -533.45 | 40°13'18.426"N | 104°49'27.665"W | 0.00 | |
| 12517.00† | 90.093 | 179.956 | 7082.76 | 5579.77 | -5580.18 | -533.37 | 40°13'17.438"N | 104°49'27.664"W | 0.00 | |
| 12617.00† | 90.093 | 179.956 | 7082.60 | 5679.77 | -5680.18 | -533.29 | 40°13'16.450"N | 104°49'27.663"W | 0.00 | |
| 12717.00† | 90.093 | 179.956 | 7082.44 | 5779.77 | -5780.18 | -533.21 | 40°13'15.462"N | 104°49'27.662"W | 0.00 | |
| 12817.00† | 90.093 | 179.956 | 7082.27 | 5879.77 | -5880.18 | -533.14 | 40°13'14.473"N | 104°49'27.661"W | 0.00 | |
| 12917.00† | 90.093 | 179.956 | 7082.11 | 5979.77 | -5980.18 | -533.06 | 40°13'13.485"N | 104°49'27.660"W | 0.00 | |
| 13017.00† | 90.093 | 179.956 | 7081.95 | 6079.77 | -6080.18 | -532.98 | 40°13'12.497"N | 104°49'27.659"W | 0.00 | |
| 13117.00† | 90.093 | 179.956 | 7081.78 | 6179.77 | -6180.18 | -532.91 | 40°13'11.509"N | 104°49'27.658"W | 0.00 | |
| 13217.00† | 90.093 | 179.956 | 7081.62 | 6279.77 | -6280.18 | -532.83 | 40°13'10.521"N | 104°49'27.657"W | 0.00 | |
| 13317.00† | 90.093 | 179.956 | 7081.46 | 6379.77 | -6380.18 | -532.75 | 40°13'09.532"N | 104°49'27.656"W | 0.00 | |
| 13417.00† | 90.093 | 179.956 | 7081.29 | 6479.77 | -6480.18 | -532.67 | 40°13'08.544"N | 104°49'27.655"W | 0.00 | |
| 13517.00† | 90.093 | 179.956 | 7081.13 | 6579.77 | -6580.18 | -532.60 | 40°13'07.556"N | 104°49'27.654"W | 0.00 | |
| 13597.72 | 90.093 | 179.956 | 7081.00 ¹ | 6660.49 | -6660.90 | -532.53 | 40°13'06.758"N | 104°49'27.653"W | 0.00 | TOTAL DEPTH |

HOLE & CASING SECTIONS - Ref Wellbore: HENRICKSON FEDERAL 35N-18HZ PWB Ref Wellpath: HENRICKSON FEDERAL 35N-18HZ (PERMIT REV-1) PWP

| String/Diameter | Start MD [ft] | End MD [ft] | Interval [ft] | Start TVD [ft] | End TVD [ft] | Start N/S [ft] | Start E/W [ft] | End N/S [ft] | End E/W [ft] |
|---------------------------|------------------|----------------|------------------|-------------------|-----------------|-------------------|-------------------|-----------------|-----------------|
| 13.5in Open Hole | 17.00 | 1000.00 | 983.00 | 17.00 | 1000.00 | 0.00 | 0.00 | 0.00 | 0.00 |
| 9.625in Casing Production | 17.00 | 1000.00 | 983.00 | 17.00 | 1000.00 | 0.00 | 0.00 | 0.00 | 0.00 |
| 8.75in Open Hole | 1000.00 | 7463.66 | 6463.66 | 1000.00 | 7091.00 | 0.00 | 0.00 | -526.85 | -537.27 |
| 7in Casing Intermediate | 17.00 | 7463.66 | 7446.66 | 17.00 | 7091.00 | 0.00 | 0.00 | -526.85 | -537.27 |
| 6.125in Open Hole | 7463.66 | 13597.72 | 6134.06 | 7091.00 | 7081.00 | -526.85 | -537.27 | -6660.90 | -532.53 |
| 4.5in Casing Production | 17.00 | 13597.72 | 13580.72 | 17.00 | 7081.00 | 0.00 | 0.00 | -6660.90 | -532.53 |



Planned Wellpath Report

HENRICKSON FEDERAL 35N-18HZ (PERMIT REV-1) PWP

Page 6 of 7



| REFERENCE WELLPATH IDENTIFICATION | | | |
|-----------------------------------|---------------------------------|----------|---|
| Operator | KERR-MCGEE OIL & GAS ONSHORE LP | Slot | SLOT#04 HENRICKSON FEDERAL 35N-18HZ (1825' FSL & 2078' FWL, SEC.07) |
| Area | COLORADO | Well | HENRICKSON FEDERAL 35N-18HZ |
| Field | WELD COUNTY (KERR MCGEE) | Wellbore | HENRICKSON FEDERAL 35N-18HZ PWB |
| Facility | SEC.07-T3N-R66W | | |

| TARGETS | | | | | | | | | |
|---|------------|-------------|---------------|--------------|----------------------|-----------------------|----------------|-----------------|---------|
| Name | MD [ft] | TVD [ft] | North [ft] | East [ft] | Grid East [US ft] | Grid North [US ft] | Latitude | Longitude | Shape |
| SEC.07-T3N-R66W HARD LINES (460' SET BACKS) | | 4811.00 | -87.78 | -1265.28 | 3187895.01 | 1329743.58 | 40°14'11.713"N | 104°49'37.103"W | polygon |
| SEC.07-T3N-R66W SECTION LINES | | 4811.00 | -87.78 | -1265.28 | 3187895.01 | 1329743.58 | 40°14'11.713"N | 104°49'37.103"W | polygon |
| SEC.18-T3N-R66W HARD LINES (460' SET BACKS) | | 4811.00 | -87.78 | -1265.27 | 3187895.01 | 1329743.58 | 40°14'11.713"N | 104°49'37.103"W | polygon |
| SEC.18-T3N-R66W SECTION LINES | | 4811.00 | -87.78 | -1265.27 | 3187895.01 | 1329743.58 | 40°14'11.713"N | 104°49'37.103"W | polygon |
| 1) HENRICKSON FEDERAL 35N-18HZ BHL ON PLAT (460' FSL & 1545' FWL, SEC. 18) REV-1 | 13597.72 | 7081.00 | -6660.90 | -532.53 | 3188677.92 | 1323176.55 | 40°13'06.758"N | 104°49'27.653"W | point |

| SURVEY PROGRAM - Ref Wellbore: HENRICKSON FEDERAL 35N-18HZ PWB Ref Wellpath: HENRICKSON FEDERAL 35N-18HZ (PERMIT REV-1) PWP | | | | |
|---|----------------|------------------------------|------------------|---------------------------------|
| Start MD [ft] | End MD [ft] | Positional Uncertainty Model | Log Name/Comment | Wellbore |
| 17.00 | 7463.66 | NaviTrak (MagCorr) | | HENRICKSON FEDERAL 35N-18HZ PWB |
| 7463.66 | 13597.72 | OnTrak (MagCorr) | | HENRICKSON FEDERAL 35N-18HZ PWB |



Planned Wellpath Report

HENRICKSON FEDERAL 35N-18HZ (PERMIT REV-1) PWP

Page 7 of 7



| REFERENCE WELLPATH IDENTIFICATION | | | |
|-----------------------------------|---------------------------------|----------|---|
| Operator | KERR-MCGEE OIL & GAS ONSHORE LP | Slot | SLOT#04 HENRICKSON FEDERAL 35N-18HZ (1825' FSL & 2078' FWL, SEC.07) |
| Area | COLORADO | Well | HENRICKSON FEDERAL 35N-18HZ |
| Field | WELD COUNTY (KERR MCGEE) | Wellbore | HENRICKSON FEDERAL 35N-18HZ PWB |
| Facility | SEC.07-T3N-R66W | | |

| WELLPATH COMMENTS | | | | |
|-------------------|--------------------|----------------|-------------|------------------|
| MD [ft] | Inclination [°] | Azimuth [°] | TVD [ft] | Comment |
| 517.00 | 0.000 | 275.000 | 517.00 | FOX HILLS BASE |
| 3843.62 | 10.000 | 275.000 | 3807.00 | PARKMAN |
| 4294.25 | 8.258 | 275.000 | 4251.00 | SUSSEX |
| 6462.72 | 0.000 | 179.956 | 6418.04 | 4 1/2" Liner Top |
| 7077.01 | 51.428 | 179.956 | 6966.00 | SHARON SPRINGS |
| 7180.73 | 61.801 | 179.956 | 7023.00 | NIOBRARA A |
| 7310.88 | 74.816 | 179.956 | 7071.00 | NIOBRARA B |

| DESIGN COMMENTS | | | | |
|-----------------|--------------------|----------------|-------------|----------------------|
| MD [ft] | Inclination [°] | Azimuth [°] | TVD [ft] | Comment |
| 17.00 | 0.000 | 275.000 | 17.00 | TIE-ON |
| 1100.00 | 0.000 | 275.000 | 1100.00 | BEGIN NUDGE |
| 1600.00 | 10.000 | 275.000 | 1597.47 | END NUDGE |
| 4207.14 | 10.000 | 275.000 | 4165.00 | BEGIN DROP |
| 4707.14 | 0.000 | 179.956 | 4662.47 | END DROP |
| 6562.72 | 0.000 | 179.956 | 6518.05 | KOP. BUILD @ 10°/100 |
| 7463.66 | 90.093 | 179.956 | 7091.00 | LANDING POINT |
| 13597.72 | 90.093 | 179.956 | 7081.00 | TOTAL DEPTH |