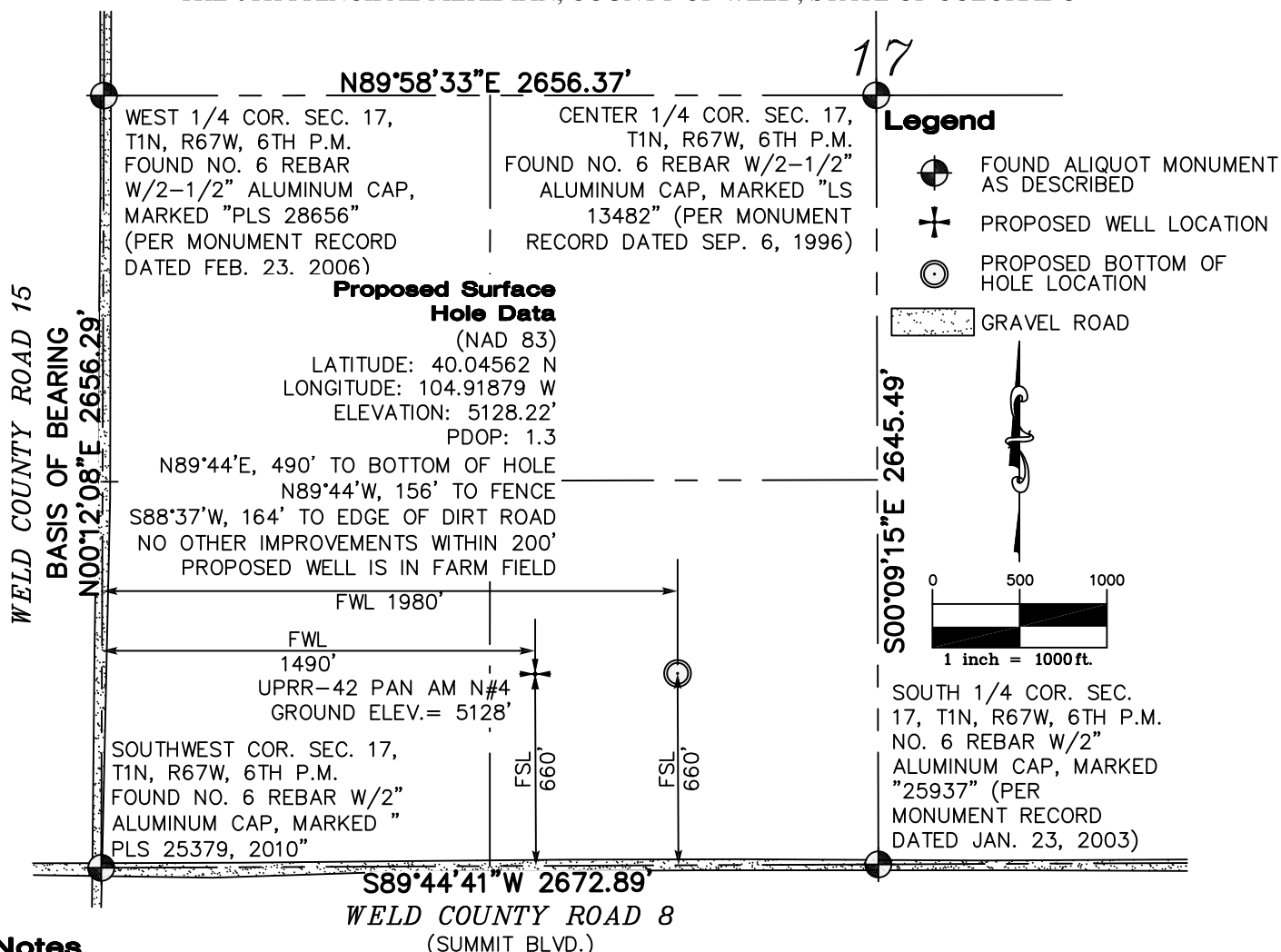


WELL LOCATION EXHIBIT

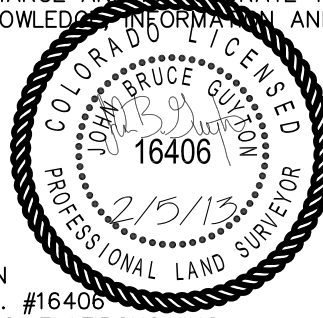
LOCATED IN THE SW QUARTER OF SECTION 17, TOWNSHIP 1 NORTH, RANGE 67 WEST OF THE 6TH PRINCIPAL MERIDIAN, COUNTY OF WELD, STATE OF COLORADO



Notes

1. BASIS OF BEARINGS: GPS DERIVED BEARINGS BASED ON A BEARING OF N00°12'08"E ALONG THE WEST LINE OF SECTION 17, BETWEEN THE TWO FOUND MONUMENTS, AS SHOWN HEREON, ON FEBRUARY 4, 2013 BY DAVE ZEROLL COLORADO STATE PLANE COORDINATE SYSTEM, NORTH ZONE, NORTH AMERICAN DATUM 1983 (NAD83). ALL BEARINGS SHOWN HEREON ARE RELATIVE THERETO.
2. IN ACCORDANCE WITH A REQUEST FROM SUSANA LARA-MESA OF KP KAUFFMAN INC., FLATIRONS, INC. HAS DETERMINED THE LOCATION OF UPRR-42 PAN AM N#4 WELL SITE TO BE 660' FSL AND 1490' FWL AS MEASURED AT NINETY (90) DEGREES FROM THE SECTION LINES OF SECTION 17, T1N, R67W, OF 6TH P.M., WELD COUNTY, CO.
3. THE WELL IS LOCATED IN THE SE1/4 OF THE SW1/4 OF SECTION 17.
4. ELEVATIONS ARE BASED UPON NAVD 88 DATUM.
5. ACCORDING TO COLORADO LAW YOU MUST COMMENCE ANY LEGAL ACTION BASED UPON ANY DEFECT IN THIS EXHIBIT WITHIN THREE YEARS AFTER YOU FIRST DISCOVER SUCH DEFECT. IN NO EVENT MAY ANY ACTION BASED UPON ANY DEFECT IN THIS EXHIBIT BE COMMENCED MORE THAN TEN YEARS FROM THE DATE OF THE CERTIFICATION SHOWN HEREON.

I, JOHN B. GUYTON, A LAND SURVEYOR LICENSED IN THE STATE OF COLORADO, HEREBY STATE FOR AND ON BEHALF OF FLATIRONS, INC., TO KP KAUFFMAN, INC., THAT THIS WELL LOCATION EXHIBIT IS NOT A LAND SURVEY PLAT OR IMPROVEMENT SURVEY PLAT AND WAS PREPARED BY ME OR UNDER MY RESPONSIBLE CHARGE AND IS ACCURATE TO THE BEST OF MY KNOWLEDGE, INFORMATION AND BELIEF.



JOHN B. GUYTON
COLORADO P.L.S. #16406
CHAIRMAN & CEO, FLATIRONS, INC.

Flatirons, Inc.

Surveying, Engineering & Geomatics

3825 IRIS AVE, STE 395
BOULDER, CO 80301
PH: (303) 443-7001
FAX: (303) 443-9830



655 FOURTH AVE
LONGMONT, CO 80501
PH: (303) 776-1733
FAX: (303) 776-4355

www.FlatironsInc.com