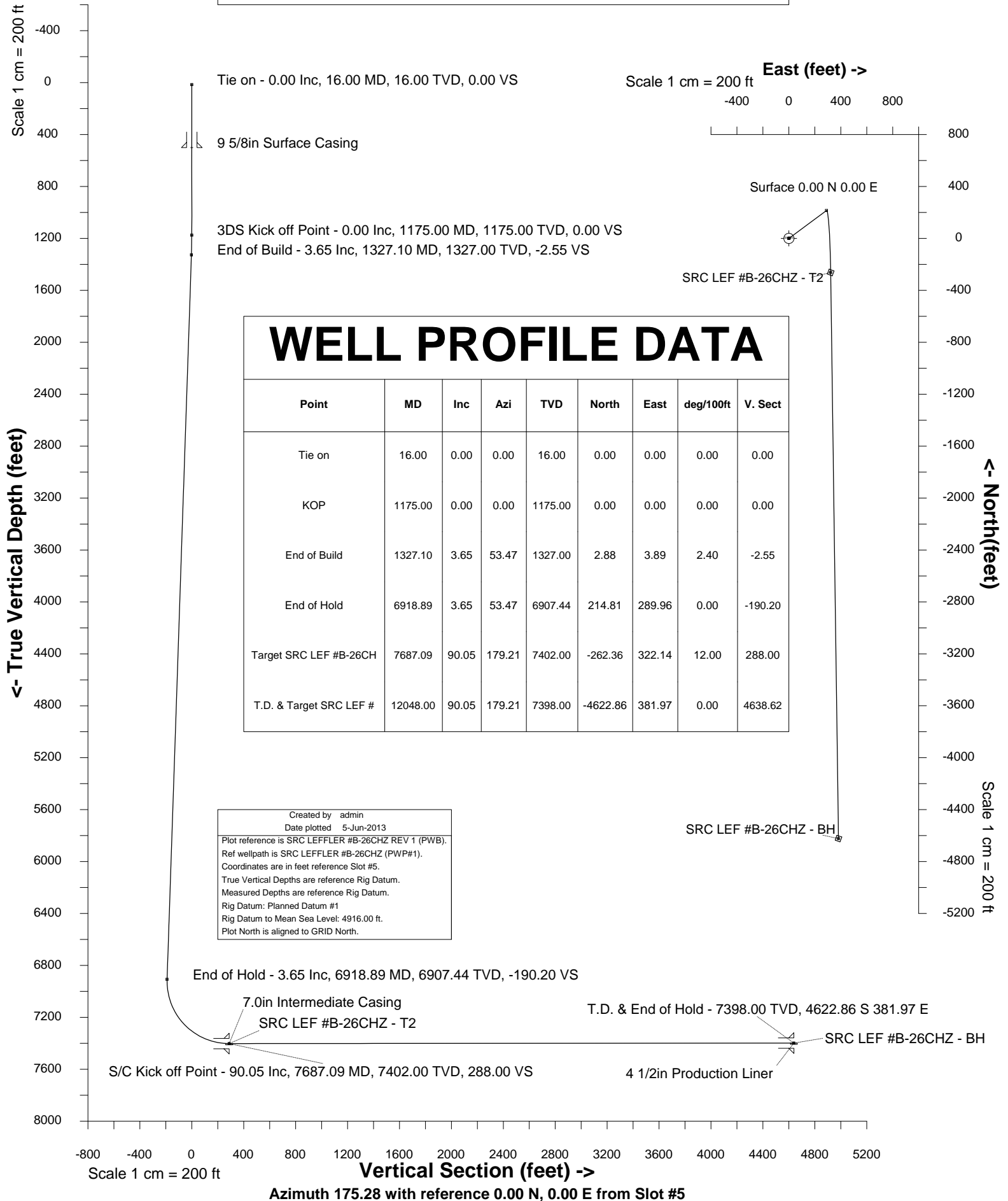


SYNERGY RESOURCES

Location	Weld County, CO, USA(Imported)	Slot	Slot #5
Field	Wattenberg	Well	SRC LEFFLER #B-26CHZ
Installation	SRC LEFFLER	Wellbore	SRC LEFFLER #B-26CHZ REV 1 (PWB)



SYSDRILL
Well Design Combined Report
Wellbore: SRC LEFFLER #B-26CHZ REV 1 (PWB)

Wellhead Details							
Name	Northing	Easting	Latitude	Longitude	North	East	Elevation Above Inst.
Slot #5	1445135.7270	3208231.1160	N40 33 10.3757	W104 45 2.3074	2.14N	89.95E	-0.00

Declination			
Date	Source	Time	
28-Mar-2013	IGRF Model [1900.0-2015.0]		09:50

Site Details				
Name	Northing	Easting	Coord System Name	North Alignment
SRC LEFFLER	1445133.5911	3208141.1650	CO83-NF on NORTH AMERICAN DATUM 1983 datum	Grid

Summary Wellpath									
MD[ft]	Inc[deg]	Azi[deg]	TVD[ft]	North[ft]	East[ft]	Dogleg [deg/100ft]	Vertical Section[ft]	Northing	Easting
16.00	0.00	0.000	16.00	0.00N	0.00E		0.00	1445135.73	3208231.12
1175.00	0.00	0.000	1175.00	0.00N	0.00E	==>	0.00	1445135.73	3208231.12
1327.10	3.65	53.470	1327.00	2.88N	3.89E	2.40	-2.55	1445138.61	3208235.01
6918.89	3.65	53.470	6907.44	214.81N	289.96E	==>	-190.20	1445350.53	3208521.07
7687.09	90.05	179.210	7402.00	262.36S	322.14E	12.00	288.00	1444873.37	3208553.25
12048.00	90.05	179.210	7398.00	4622.86S	381.97E	==>	4638.62	1440513.01	3208613.07

Interpolated Wellpath									
MD[ft]	Inc[deg]	Azi[deg]	TVD[ft]	North[ft]	East[ft]	Dogleg [deg/100ft]	Vertical Section[ft]	Northing	Easting
0.00	0.00	0.000	0.00	0.00N	0.00E		0.00	1445135.73	3208231.12
16.00	0.00	0.000	16.00	0.00N	0.00E	==>	0.00	1445135.73	3208231.12
100.00	0.00	0.000	100.00	0.00N	0.00E	==>	0.00	1445135.73	3208231.12
200.00	0.00	0.000	200.00	0.00N	0.00E	==>	0.00	1445135.73	3208231.12
300.00	0.00	0.000	300.00	0.00N	0.00E	==>	0.00	1445135.73	3208231.12
400.00	0.00	0.000	400.00	0.00N	0.00E	==>	0.00	1445135.73	3208231.12
500.00	0.00	0.000	500.00	0.00N	0.00E	==>	0.00	1445135.73	3208231.12
600.00	0.00	0.000	600.00	0.00N	0.00E	==>	0.00	1445135.73	3208231.12
700.00	0.00	0.000	700.00	0.00N	0.00E	==>	0.00	1445135.73	3208231.12
800.00	0.00	0.000	800.00	0.00N	0.00E	==>	0.00	1445135.73	3208231.12
900.00	0.00	0.000	900.00	0.00N	0.00E	==>	0.00	1445135.73	3208231.12
1000.00	0.00	0.000	1000.00	0.00N	0.00E	==>	0.00	1445135.73	3208231.12
1100.00	0.00	0.000	1100.00	0.00N	0.00E	==>	0.00	1445135.73	3208231.12
1159.00	0.00	0.000	1159.00	0.00N	0.00E	==>	0.00	1445135.73	3208231.12
1175.00	0.00	0.000	1175.00	0.00N	0.00E	==>	0.00	1445135.73	3208231.12
1259.00	2.02	53.470	1258.98	0.88N	1.19E	2.40	-0.78	1445136.61	3208232.30
1327.10	3.65	53.470	1327.00	2.88N	3.89E	2.40	-2.55	1445138.61	3208235.01
1400.00	3.65	53.470	1399.75	5.65N	7.62E	==>	-5.00	1445141.37	3208238.74
1500.00	3.65	53.470	1499.55	9.44N	12.74E	==>	-8.36	1445145.16	3208243.85
1600.00	3.65	53.470	1599.34	13.23N	17.85E	==>	-11.71	1445148.95	3208248.97
1700.00	3.65	53.470	1699.14	17.02N	22.97E	==>	-15.07	1445152.74	3208254.08
1800.00	3.65	53.470	1798.94	20.81N	28.09E	==>	-18.42	1445156.53	3208259.20
1900.00	3.65	53.470	1898.73	24.60N	33.20E	==>	-21.78	1445160.32	3208264.32
2000.00	3.65	53.470	1998.53	28.39N	38.32E	==>	-25.13	1445164.11	3208269.43
2100.00	3.65	53.470	2098.33	32.18N	43.43E	==>	-28.49	1445167.90	3208274.55
2200.00	3.65	53.470	2198.13	35.97N	48.55E	==>	-31.85	1445171.69	3208279.66
2300.00	3.65	53.470	2297.92	39.76N	53.66E	==>	-35.20	1445175.48	3208284.78
2400.00	3.65	53.470	2397.72	43.55N	58.78E	==>	-38.56	1445179.27	3208289.89
2500.00	3.65	53.470	2497.52	47.34N	63.90E	==>	-41.91	1445183.06	3208295.01
2600.00	3.65	53.470	2597.31	51.13N	69.01E	==>	-45.27	1445186.85	3208300.13
2700.00	3.65	53.470	2697.11	54.92N	74.13E	==>	-48.63	1445190.64	3208305.24
2800.00	3.65	53.470	2796.91	58.71N	79.24E	==>	-51.98	1445194.43	3208310.36
2900.00	3.65	53.470	2896.71	62.50N	84.36E	==>	-55.34	1445198.22	3208315.47
3000.00	3.65	53.470	2996.50	66.29N	89.48E	==>	-58.69	1445202.01	3208320.59
3100.00	3.65	53.470	3096.30	70.08N	94.59E	==>	-62.05	1445205.80	3208325.70
3200.00	3.65	53.470	3196.10	73.87N	99.71E	==>	-65.40	1445209.59	3208330.82
3300.00	3.65	53.470	3295.89	77.66N	104.82E	==>	-68.76	1445213.38	3208335.94
3400.00	3.65	53.470	3395.69	81.45N	109.94E	==>	-72.12	1445217.17	3208341.05
3500.00	3.65	53.470	3495.49	85.24N	115.06E	==>	-75.47	1445220.96	3208346.17
3600.00	3.65	53.470	3595.29	89.03N	120.17E	==>	-78.83	1445224.75	3208351.28
3700.00	3.65	53.470	3695.08	92.82N	125.29E	==>	-82.18	1445228.54	3208356.40
3800.00	3.65	53.470	3794.88	96.61N	130.40E	==>	-85.54	1445232.33	3208361.51

All data is in Feet unless otherwise stated
Coordinates are from Slot MD's are from Rig and TVD's are from Rig (Planned Datum #1 4916.0ft above Mean Sea Level)
Vertical Section is from 0.00N 0.00E on azimuth 175.280 degrees
Bottom hole distance is 4638.62 Feet on azimuth 175.28 degrees from Wellhead
Calculation method uses Minimum Curvature method
Date Printed: 5-Jun-2013

SYSDRILL
Well Design Combined Report
Wellbore: SRC LEFFLER #B-26CHZ REV 1 (PWB)

Interpolated Wellpath									
MD[ft]	Inc[deg]	Azi[deg]	TVD[ft]	North[ft]	East[ft]	Dogleg [deg/100ft]	Vertical Section[ft]	Northing	Easting
3900.00	3.65	53.470	3894.68	100.40N	135.52E	==>	-88.90	1445236.12	3208366.63
4000.00	3.65	53.470	3994.47	104.19N	140.63E	==>	-92.25	1445239.91	3208371.75
4100.00	3.65	53.470	4094.27	107.98N	145.75E	==>	-95.61	1445243.70	3208376.86
4200.00	3.65	53.470	4194.07	111.77N	150.87E	==>	-98.96	1445247.49	3208381.98
4300.00	3.65	53.470	4293.87	115.56N	155.98E	==>	-102.32	1445251.28	3208387.09
4400.00	3.65	53.470	4393.66	119.35N	161.10E	==>	-105.67	1445255.07	3208392.21
4500.00	3.65	53.470	4493.46	123.14N	166.21E	==>	-109.03	1445258.86	3208397.33
4600.00	3.65	53.470	4593.26	126.93N	171.33E	==>	-112.39	1445262.65	3208402.44
4700.00	3.65	53.470	4693.05	130.72N	176.45E	==>	-115.74	1445266.44	3208407.56
4800.00	3.65	53.470	4792.85	134.51N	181.56E	==>	-119.10	1445270.23	3208412.67
4900.00	3.65	53.470	4892.65	138.30N	186.68E	==>	-122.45	1445274.02	3208417.79
5000.00	3.65	53.470	4992.45	142.09N	191.79E	==>	-125.81	1445277.81	3208422.90
5100.00	3.65	53.470	5092.24	145.88N	196.91E	==>	-129.17	1445281.60	3208428.02
5200.00	3.65	53.470	5192.04	149.67N	202.03E	==>	-132.52	1445285.39	3208433.14
5300.00	3.65	53.470	5291.84	153.46N	207.14E	==>	-135.88	1445289.18	3208438.25
5400.00	3.65	53.470	5391.63	157.25N	212.26E	==>	-139.23	1445292.97	3208443.37
5500.00	3.65	53.470	5491.43	161.04N	217.37E	==>	-142.59	1445296.76	3208448.48
5600.00	3.65	53.470	5591.23	164.83N	222.49E	==>	-145.94	1445300.55	3208453.60
5700.00	3.65	53.470	5691.03	168.62N	227.61E	==>	-149.30	1445304.34	3208458.71
5800.00	3.65	53.470	5790.82	172.41N	232.72E	==>	-152.66	1445308.13	3208463.83
5900.00	3.65	53.470	5890.62	176.20N	237.84E	==>	-156.01	1445311.92	3208468.95
6000.00	3.65	53.470	5990.42	179.99N	242.95E	==>	-159.37	1445315.71	3208474.06
6100.00	3.65	53.470	6090.21	183.78N	248.07E	==>	-162.72	1445319.50	3208479.18
6200.00	3.65	53.470	6190.01	187.57N	253.18E	==>	-166.08	1445323.29	3208484.29
6300.00	3.65	53.470	6289.81	191.36N	258.30E	==>	-169.44	1445327.08	3208489.41
6400.00	3.65	53.470	6389.60	195.15N	263.42E	==>	-172.79	1445330.87	3208494.52
6500.00	3.65	53.470	6489.40	198.94N	268.53E	==>	-176.15	1445334.66	3208499.64
6600.00	3.65	53.470	6589.20	202.73N	273.65E	==>	-179.50	1445338.45	3208504.76
6700.00	3.65	53.470	6689.00	206.52N	278.76E	==>	-182.86	1445342.24	3208509.87
6800.00	3.65	53.470	6788.79	210.31N	283.88E	==>	-186.21	1445346.03	3208514.99
6900.00	3.65	53.470	6888.59	214.10N	289.00E	==>	-189.57	1445349.82	3208520.10
6918.89	3.65	53.470	6907.44	214.81N	289.96E	==>	-190.20	1445350.53	3208521.07
7000.00	8.16	158.030	6988.25	211.00N	294.20E	12.00	-186.06	1445346.72	3208525.31
7100.00	19.82	170.950	7085.14	187.60N	299.54E	12.00	-162.30	1445323.32	3208530.65
7200.00	31.73	174.410	7175.04	144.53N	304.79E	12.00	-118.95	1445280.26	3208535.89
7300.00	43.68	176.100	7254.01	83.69N	309.72E	12.00	-57.90	1445219.42	3208540.82
7400.00	55.65	177.180	7318.62	7.73N	314.11E	12.00	18.16	1445143.45	3208545.21
7500.00	67.63	177.990	7366.03	80.04S	317.77E	12.00	105.93	1445055.69	3208548.88
7600.00	79.62	178.670	7394.17	175.76S	320.55E	12.00	201.56	1444959.97	3208551.65
7687.09	90.05	179.210	7402.00	262.36S	322.14E	12.00	288.00	1444873.37	3208553.25
7700.00	90.05	179.210	7401.99	275.27S	322.32E	==>	300.88	1444860.46	3208553.43
7800.00	90.05	179.210	7401.90	375.26S	323.69E	==>	400.65	1444760.47	3208554.80
7900.00	90.05	179.210	7401.80	475.26S	325.06E	==>	500.41	1444660.49	3208556.17
8000.00	90.05	179.210	7401.71	575.25S	326.44E	==>	600.17	1444560.50	3208557.54
8100.00	90.05	179.210	7401.62	675.24S	327.81E	==>	699.94	1444460.51	3208558.91
8200.00	90.05	179.210	7401.53	775.23S	329.18E	==>	799.70	1444360.52	3208560.29
8300.00	90.05	179.210	7401.44	875.22S	330.55E	==>	899.46	1444260.54	3208561.66
8400.00	90.05	179.210	7401.35	975.21S	331.92E	==>	999.23	1444160.55	3208563.03
8500.00	90.05	179.210	7401.25	1075.20S	333.30E	==>	1098.99	1444060.56	3208564.40
8600.00	90.05	179.210	7401.16	1175.19S	334.67E	==>	1198.76	1443960.57	3208565.77
8700.00	90.05	179.210	7401.07	1275.18S	336.04E	==>	1298.52	1443860.59	3208567.14
8800.00	90.05	179.210	7400.98	1375.17S	337.41E	==>	1398.28	1443760.60	3208568.52
8900.00	90.05	179.210	7400.89	1475.16S	338.78E	==>	1498.05	1443660.61	3208569.89
9000.00	90.05	179.210	7400.80	1575.15S	340.16E	==>	1597.81	1443560.62	3208571.26
9100.00	90.05	179.210	7400.70	1675.14S	341.53E	==>	1697.58	1443460.64	3208572.63
9200.00	90.05	179.210	7400.61	1775.13S	342.90E	==>	1797.34	1443360.65	3208574.00
9300.00	90.05	179.210	7400.52	1875.12S	344.27E	==>	1897.10	1443260.66	3208575.38
9400.00	90.05	179.210	7400.43	1975.11S	345.64E	==>	1996.87	1443160.68	3208576.75
9500.00	90.05	179.210	7400.34	2075.10S	347.01E	==>	2096.63	1443060.69	3208578.12
9600.00	90.05	179.210	7400.25	2175.09S	348.39E	==>	2196.40	1442960.70	3208579.49
9700.00	90.05	179.210	7400.15	2275.09S	349.76E	==>	2296.16	1442860.71	3208580.86
9800.00	90.05	179.210	7400.06	2375.08S	351.13E	==>	2395.92	1442760.73	3208582.24
9900.00	90.05	179.210	7399.97	2475.07S	352.50E	==>	2495.69	1442660.74	3208583.61
10000.00	90.05	179.210	7399.88	2575.06S	353.87E	==>	2595.45	1442560.75	3208584.98
10100.00	90.05	179.210	7399.79	2675.05S	355.25E	==>	2695.22	1442460.76	3208586.35
10200.00	90.05	179.210	7399.70	2775.04S	356.62E	==>	2794.98	1442360.78	3208587.72

All data is in Feet unless otherwise stated
Coordinates are from Slot MD's are from Rig and TVD's are from Rig (Planned Datum #1 4916.0ft above Mean Sea Level)
Vertical Section is from 0.00N 0.00E on azimuth 175.280 degrees
Bottom hole distance is 4638.62 Feet on azimuth 175.28 degrees from Wellhead
Calculation method uses Minimum Curvature method
Date Printed: 5-Jun-2013

SYSDRILL
Well Design Combined Report
Wellbore: SRC LEFFLER #B-26CHZ REV 1 (PWB)

Interpolated Wellpath									
MD[ft]	Inc[deg]	Azi[deg]	TVD[ft]	North[ft]	East[ft]	Dogleg [deg/100ft]	Vertical Section[ft]	Northing	Easting
10300.00	90.05	179.210	7399.60	2875.03S	357.99E	==>	2894.74	1442260.79	3208589.09
10400.00	90.05	179.210	7399.51	2975.02S	359.36E	==>	2994.51	1442160.80	3208590.47
10500.00	90.05	179.210	7399.42	3075.01S	360.73E	==>	3094.27	1442060.81	3208591.84
10600.00	90.05	179.210	7399.33	3175.00S	362.11E	==>	3194.04	1441960.83	3208593.21
10700.00	90.05	179.210	7399.24	3274.99S	363.48E	==>	3293.80	1441860.84	3208594.58
10800.00	90.05	179.210	7399.14	3374.98S	364.85E	==>	3393.56	1441760.85	3208595.95
10900.00	90.05	179.210	7399.05	3474.97S	366.22E	==>	3493.33	1441660.86	3208597.33
11000.00	90.05	179.210	7398.96	3574.96S	367.59E	==>	3593.09	1441560.88	3208598.70
11100.00	90.05	179.210	7398.87	3674.95S	368.97E	==>	3692.85	1441460.89	3208600.07
11200.00	90.05	179.210	7398.78	3774.94S	370.34E	==>	3792.62	1441360.90	3208601.44
11300.00	90.05	179.210	7398.69	3874.93S	371.71E	==>	3892.38	1441260.91	3208602.81
11400.00	90.05	179.210	7398.59	3974.92S	373.08E	==>	3992.15	1441160.93	3208604.19
11500.00	90.05	179.210	7398.50	4074.92S	374.45E	==>	4091.91	1441060.94	3208605.56
11600.00	90.05	179.210	7398.41	4174.91S	375.82E	==>	4191.67	1440960.95	3208606.93
11700.00	90.05	179.210	7398.32	4274.90S	377.20E	==>	4291.44	1440860.96	3208608.30
11800.00	90.05	179.210	7398.23	4374.89S	378.57E	==>	4391.20	1440760.98	3208609.67
11900.00	90.05	179.210	7398.14	4474.88S	379.94E	==>	4490.97	1440660.99	3208611.04
12000.00	90.05	179.210	7398.04	4574.87S	381.31E	==>	4590.73	1440561.00	3208612.42
12048.00	90.05	179.210	7398.00	4622.86S	381.97E	==>	4638.62	1440513.01	3208613.07

All data is in Feet unless otherwise stated
Coordinates are from Slot MD's are from Rig and TVD's are from Rig (Planned Datum #1 4916.0ft above Mean Sea Level)
Vertical Section is from 0.00N 0.00E on azimuth 175.280 degrees
Bottom hole distance is 4638.62 Feet on azimuth 175.28 degrees from Wellhead
Calculation method uses Minimum Curvature method
Date Printed: 5-Jun-2013

SYSDRILL
Well Design Combined Report
Wellbore: SRC LEFFLER #B-26CHZ REV 1 (PWB)

Hole Sections								
Diameter [in]	Start MD[ft]	Start TVD[ft]	Start North[ft]	Start East[ft]	End MD[ft]	End TVD[ft]	End North[ft]	End East[ft]
12 1/4	16.00	16.00	0.00N	0.00E	500.00	500.00	0.00N	0.00E
8 3/4	500.00	500.00	0.00N	0.00E	7687.00	7402.00	262.28S	322.14E
6 1/8	7687.00	7402.00	262.28S	322.14E	12048.00	7398.00	4622.86S	381.97E

Casings								
Name	Top MD[ft]	Top TVD[ft]	Top North[ft]	Top East[ft]	Shoe MD[ft]	Shoe TVD[ft]	Shoe North[ft]	Shoe East[ft]
9 5/8in Surface Casing	0.00				500.00	500.00	0.00N	0.00E
7.0in Intermediate Casing	0.00				7687.00	7402.00	262.28S	322.14E
4 1/2in Production Liner	6919.00	6907.55	214.82N	289.97E	12048.00	7398.00	4622.86S	381.97E

Targets								
Name	North[ft]	East[ft]	TVD[ft]	Latitude	Longitude	Northing	Easting	Last Revised
SRC LEF	4622.86S	381.97E	7398.00	N40 32 24.6651	W104 44 57.8662	1440513.01	3208613.07	14-May-2013
#B-26CHZ - BH								
SRC LEF	262.36S	322.14E	7402.00	N40 33 7.7564	W104 44 58.1631	1444873.37	3208553.25	14-May-2013
#B-26CHZ - T2								

Survey Tool Program					
Reference	Survey Name	MD[ft]	TVD[ft]	Survey Tool	Error Model
38188	Planned	12048.00	7398.00	WdW Rate Gyro	Standard

Notes

SYSDRILL
Closest Approach + Clearance Factor Summary Report
Wellbore: SRC LEFFLER #B-26CHZ REV 1 (PWB)

Ellipse separations are reported ONLY if BOTH wells have uncertainty data
Only Depth and Magnetic Reference Field error terms are correlated across tie points
Cutoff is calculated on CENTRE to CENTRE distance

Summary data uses Closest Approach clearance calculation for all minima
Hole size/Casings ARE included
Hole size/Casings are NOT subtracted from Centre-Centre distance
Confidence limit of 95.00% / 2.80 SD.

Wellbore		
Name	Created	Last Revised
SRC LEFFLER #B-26CHZ REV 1 (PWB)	5-Jun-2013	5-Jun-2013

Well		
Name	Government ID	Last Revised
SRC LEFFLER #B-26CHZ		1-Apr-2013

Slot						
Name	Grid Northing	Grid Easting	Latitude	Longitude	North	East
Slot #5	1445135.7270	3208231.1160	N40 33 10.3757	W104 45 2.3074	2.14N	89.95E

Installation				
Name	Easting	Northing	Coord System Name	North Alignment
SRC LEFFLER	3208141.1650	1445133.5911	CO83-NF on NORTH AMERICAN DATUM 1983 datum	Grid

Field				
Name	Easting	Northing	Coord System Name	North Alignment
Wattenberg	3212690.1960	1438741.7551	CO83-NF on NORTH AMERICAN DATUM 1983 datum	Grid

Clearance Summary										
Offset WellName	Offset Wellbore	Offset Slot	Offset Structure	Separation [ft]	MD[ft]	Diverging From[ft]	Ellipse Separation [ft]	Ellipse MD[ft]	Clearance Factor	Clearance MD[ft]
SRC LEFFLER #B-26NAHZ	SRC LEFFLER #B-26NAHZ (PWB)	Slot #4	SRC LEFFLER	22.50	1175.00	12048.00	19.97	1180.70	4.77	12048.00
SRC LEFFLER #B-26NBHZ	SRC LEFFLER #B-26NBHZ REV 1 (PWB)	Slot #6	SRC LEFFLER	22.50	1131.49	1131.49	20.04	1131.49	3.71	12048.00
SRC LEFFLER #24-26NHZ	SRC LEFFLER #24-26NHZ (PWB)	Slot #7	SRC LEFFLER	44.99	1065.87	7758.78	42.64	1065.87	9.09	12048.00
SRC LEFFLER #14-26NHZ	SRC LEFFLER #14-26NHZ (PWB)	Slot #3	SRC LEFFLER	44.99	1033.06	1033.06	42.70	1033.06	9.42	12048.00
SRC LEFFLER #P-26CHZ	SRC LEFFLER #P-26CHZ REV 1 (PWB)	Slot #8	SRC LEFFLER	67.48	951.04	12023.87	65.32	951.04	13.76	12048.00
SRC LEFFLER #H-26CHZ	SRC LEFFLER #H-26CHZ REV 1 (PWB)	Slot #2	SRC LEFFLER	67.49	967.44	12048.00	65.30	967.44	13.79	12048.00
SRC LEFFLER #H-26NHZ	SRC LEFFLER #H-26NHZ (PWB)	Slot #1	SRC LEFFLER	89.98	852.61	12048.00	87.97	852.61	15.03	12048.00
SRC LEFFLER P-26NHZ	SRC LEFFLER P-26NHZ REV 1 (PWB)	Slot #9	SRC LEFFLER	89.98	852.61	12023.87	87.97	852.61	15.05	12048.00
MAGNUSON #23L-201	MAGNUSON #23L-201 (AWB)	MAGNUSON N #23L-201	SRC LEFFLER OFFSETS	164.23	5669.20	5669.20	140.90	5669.20	6.92	6167.57

All data is in Feet unless otherwise stated
Coordinates are from Slot MD's are from Rig and TVD's are from Rig (Planned Datum #1 4916.0ft above Mean Sea Level)
Vertical Section is from 0.00N 0.00E on azimuth 175.280 degrees
Date Printed: 5-Jun-2013

SYSDRILL
Closest Approach + Clearance Factor Summary Report
Wellbore: SRC LEFFLER #B-26CHZ REV 1 (PWB)

Clearance Summary										
Offset WellName	Offset Wellbore	Offset Slot	Offset Structure	Separation [ft]	MD[ft]	Diverging From[ft]	Ellipse Separation [ft]	Ellipse MD[ft]	Clearance Factor	Clearance MD[ft]
MAGNUSO N #23L-421	MAGNUSON #23L-421 (AWB)	MAGNUSO N #23L-421	SRC LEFFLER OFFSETS	341.96	2066.52	6971.38	327.78	2116.00	21.17	2706.29
MAGNUSO N #23I-421	MAGNUSON #23I-421 (AWB)	MAGNUSO N #23I-421	SRC LEFFLER OFFSETS	501.62	1118.53	1118.53	496.35	1180.70	28.32	6918.89
MAGNUSO N #23I-221	MAGNUSON #23I-221 (AWB)	MAGNUSO N #23I-221	SRC LEFFLER OFFSETS	522.09	1000.25	1000.25	517.48	1033.06	42.48	6905.76
SRC LEFFLER #24-26D	SRC LEFFLER #24-26D (AWB)	SRC LEFFLER #24-26D	SRC LEFFLER OFFSETS	608.32	11841.02	11841.02	537.86	11859.83	8.47	11941.85
SRC LEFFLER #23-26D	SRC LEFFLER #23-26D (AWB)	SRC LEFFLER #23-26D	SRC LEFFLER OFFSETS	643.52	10569.24	10569.24	587.24	10569.24	11.43	10563.90
SRC LEFFLER #13-26D	SRC LEFFLER #13-26D (AWB)	SRC LEFFLER #13-26D	SRC LEFFLER OFFSETS	645.22	10589.73	10589.73	590.38	10589.73	11.76	10580.30
SRC LEFFLER #14-26D	SRC LEFFLER #14-26D (AWB)	SRC LEFFLER #14-26D	SRC LEFFLER OFFSETS	662.16	11860.20	11860.20	592.88	11876.24	9.51	11909.04
MAGNUSS ON #1-23	MAGNUSSO N #1-23 (AWB)	MAGNUSS ON #1-23	SRC LEFFLER OFFSETS	848.38	3870.99	3870.99	825.96	4527.15	28.67	6954.98
TRACY #23M-203	TRACY #23M-203 (AWB)	TRACY #23M-203	SRC LEFFLER OFFSETS	1428.80	7112.08	7112.08	1321.75	7102.61	13.30	7053.40
LEFFLER #26Q-421	LEFFLER #26Q-421 (AWB)	LEFFLER #26Q-421	SRC LEFFLER OFFSETS	1897.14	11597.36	11597.36	1794.25	7706.54	15.00	7676.76
TRACY #31-23H	TRACY #31-23H (AWB)	TRACY #31-23H	SRC LEFFLER OFFSETS	2686.40	7141.03	7141.03	2564.12	7135.42	21.97	7116.00
SRC LEFLER #23-26DX	SRC LEFLER #23-26DX (AWB)	SRC LEFLER #23-26DX	SRC LEFFLER OFFSETS	3679.95	524.53	11106.00	3677.19	491.72	376.79	12048.00