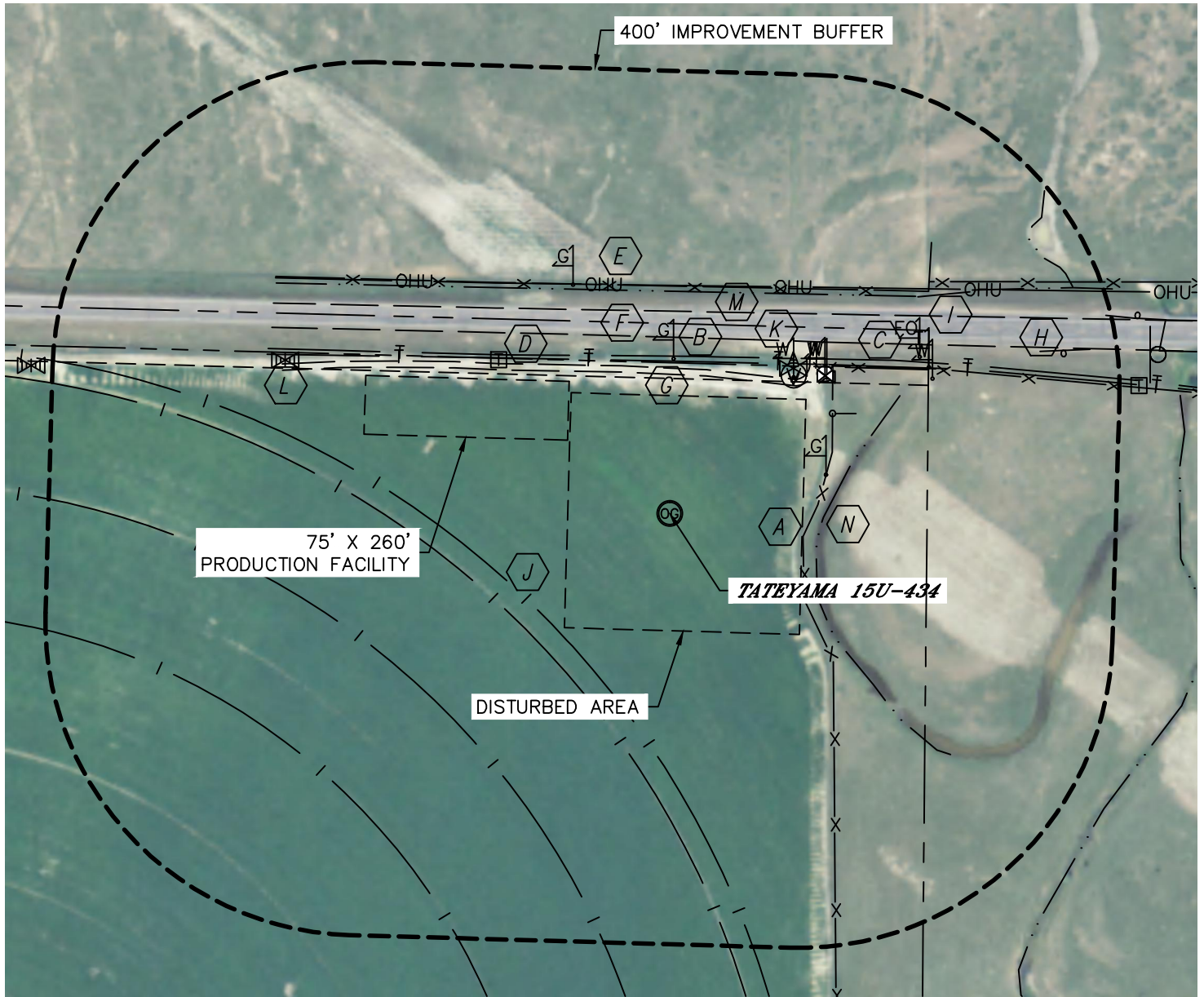




LOCATION DRAWING

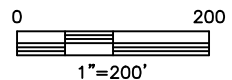
TATEYAMA 15U-434

SECTION: 15
TOWNSHIP: 7N
RANGE: 65W



IMPROVEMENTS:

- | | |
|---|--|
| FENCE 173' E, 290' N, 436' NE | GUARD RAIL 516' NE |
| GAS MARKER 198' N, 206' NE, 317' NW | CULVERT 421' NE |
| FIBER-OPTIC MARKER 377' NE
TELEPHONE MARKER 380' NE | PIVOT END-GUN 206' SW
PIVOT TRACK 235', 381' & 545' SW |
| TELEPHONE PEDESTAL 293' NW
UNDERGROUND TELEPHONE 194' & 201' N | WATER LINE EASEMENT 172' N,
WATER MARKER & EQUIPMENT 235', 264', 265' & 377' NE |
| OVERHEAD UTILITY 291' N | IRRIGATION VALVE 528' NW |
| HIGHWAY 14 225' N | BARROW DITCH 284' N |
| FIELD ROAD 178' N | SWALE 190' E, 577' NE |



NEAREST: BUILDING (DWELLING) 2050' E, PUBLIC ROAD (HWY. 14) 225' N,
ABOVE GROUND UTILITY 291' N, RAILROAD 5280'+, PROPERTY LINE 242' N

DATE: re06/05/2013
PROJECT#: 2012171