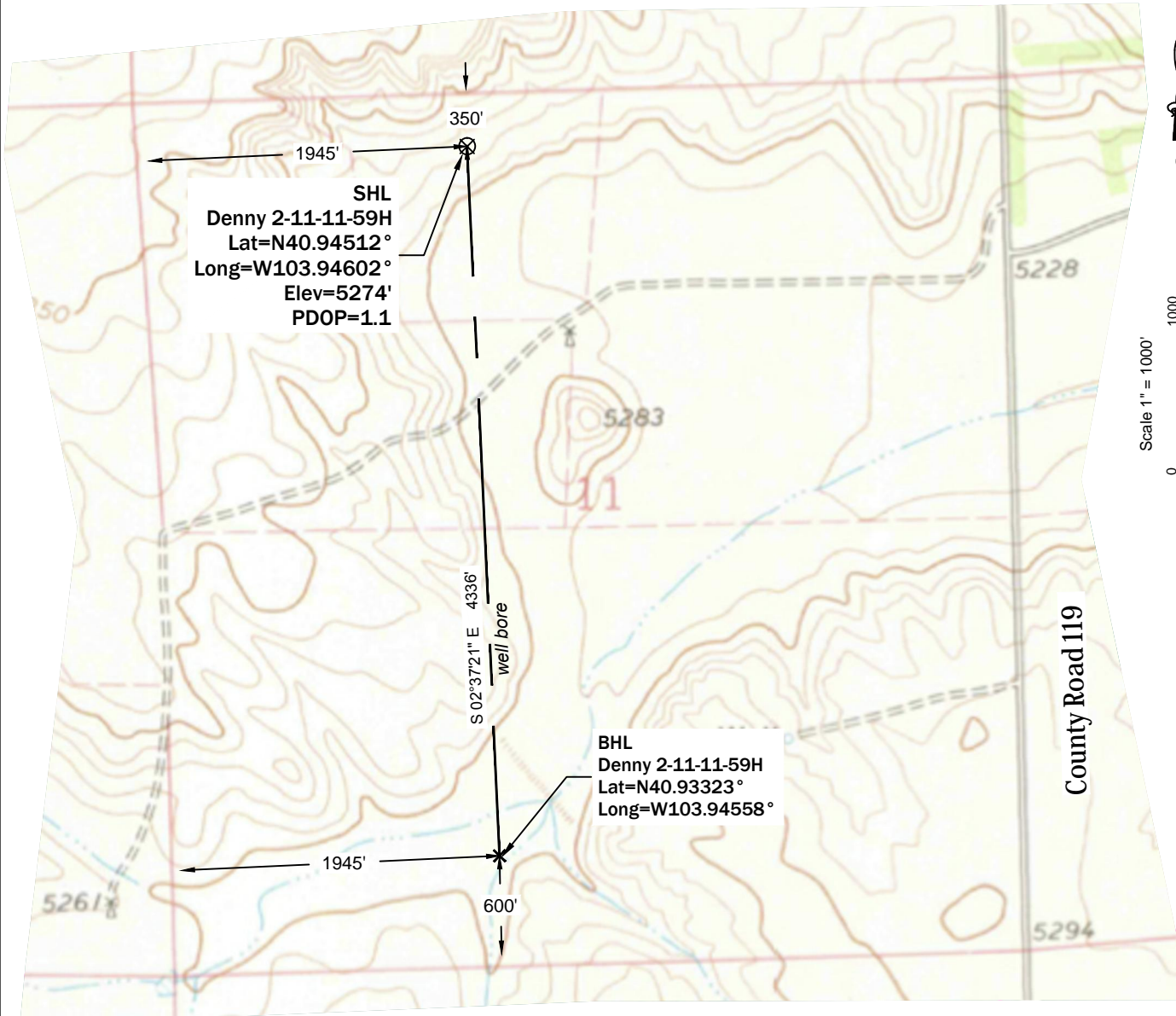


Topographic Exhibit



Notes:

- In accordance with a request from Dakota Exploration, PLS Group LLC has determined the location of the Denny 2-11-11-59H well site to be SHL: 1945' FWL and 350' FNL; BHL: 1945' FWL and 600' FSL as measured perpendicular to the section lines.
- Survey elevations based on NAVD 88 Datum using GPS observed heights and Geoid 2009 corrections.
- Distances shown are in SPC grid feet. Grid to Ground scale factor= 1.000231459810.
- This is not a Land Boundary Survey.
- Apparent Land Use is agricultural.
- Vegetation is pasture grass.
- Topographic map contours and spot elevation based on NGVD 1929.
- Topographic map dated 1977.

Measurements:

- Distance to nearest building= 3595'
- Distance to nearest public road= 3290'
- Distance to nearest above-ground utility= 3275'
- Distance to nearest property line= 1945'
- Distance to nearest railroad= 17 miles
- Distance to nearest well permitted/completed in the same formation= 700' (Smock 2-2-11-59H)

5/31/13 corr BHL Lat/Long

\\vmware-host\Shared Folders\Documents\PLS Group\Project\2013\13070\dwg\13070d004 Denny.dwg June 02, 2013 - 3:29pm

Well Name:	Denny 2-11-11-59H	Field Date 5/29/2013	Prepared for:	Project#: 13070.004b2
		Party Chief DCB	Dakota Exploration	
Section 11-T11N-R59W-6PM, NE-NW		Proj. Manager MBS		
Weld County, Colorado		Drawing Date 5/30/2013		
			PLS Group, LLC 6843 North Franklin Avenue Loveland, Colorado 80538 970.669.2100 office - 970.669.3652 fax	