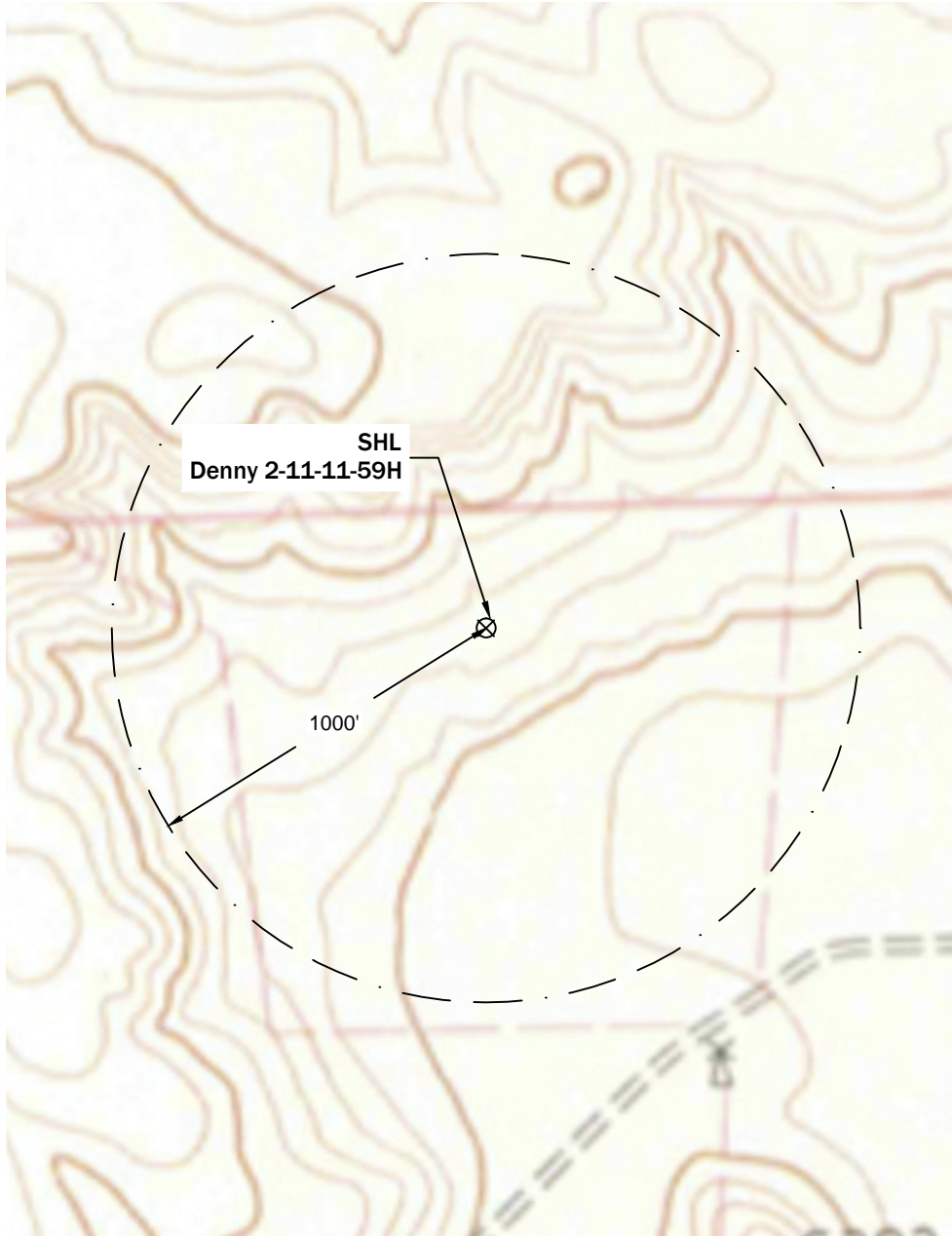


Surface Water Exhibit



Notes:

- Topographic features shown are based on USGS Quadrangle map DOLAN SPRING, COLO. dated 1977.
- Topographic map contours and spot elevation based on NGVD 1929.
- Distances shown are closest scaled measurements in US Survey feet rounded to the nearest 5 feet.

\\vmware-host\Shared Folders\Documents\PLS Group\Project\2013\13070\dwg\13070d004 Denny.dwg June 02, 2013 - 3:30pm

Well Name: Denny 2-11-11-59H	Field Date 5/29/2013	Prepared for: Dakota Exploration PLS Group, LLC 6843 North Franklin Avenue Loveland, Colorado 80538 970.669.2100 office - 970.669.3652 fax
Section 11-T11N-R59W-6PM, NE-NW	Party Chief DCB	
Weld County, Colorado	Proj. Manager MBS Drawing Date 6/2/2013	