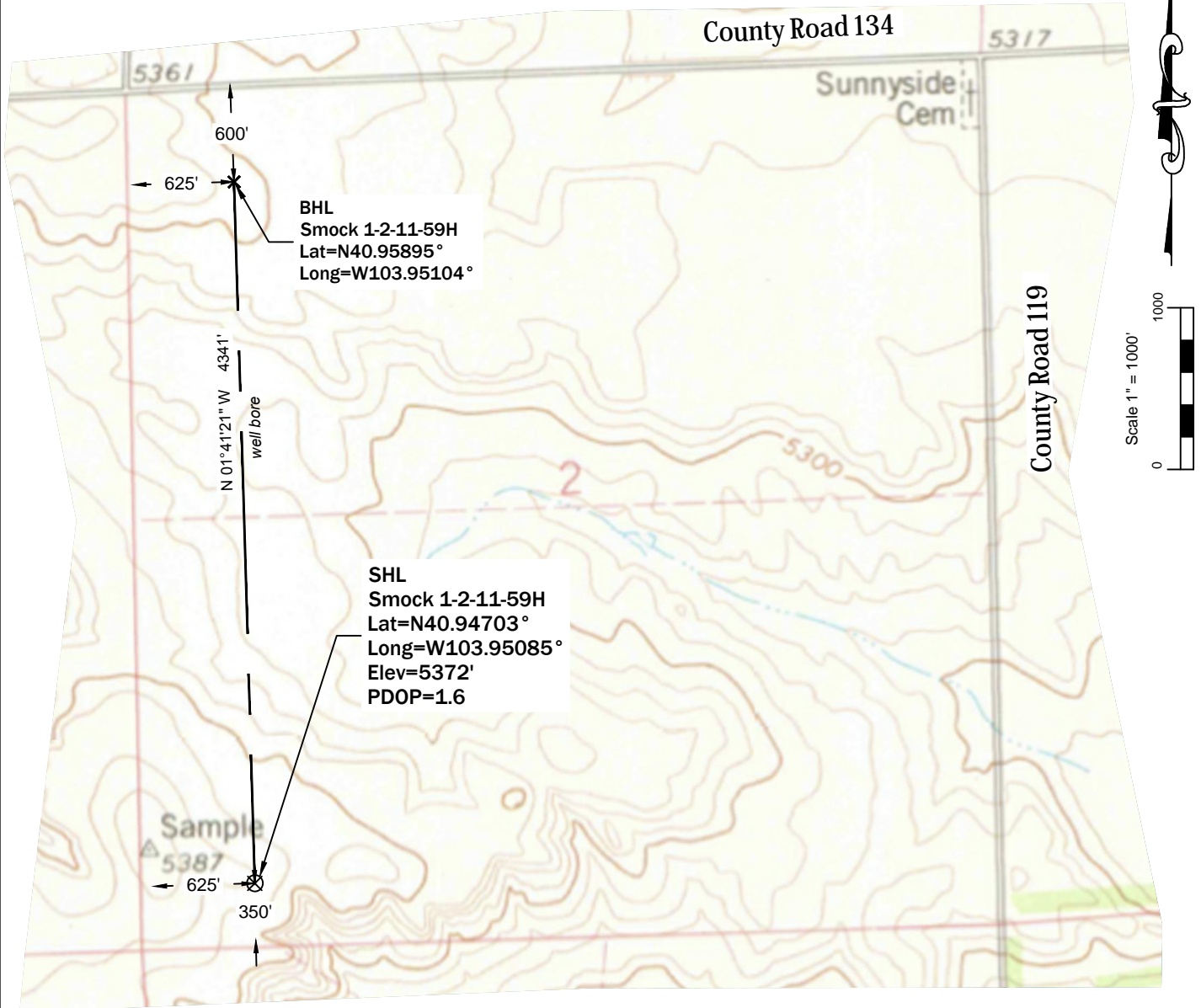


# Topographic Exhibit



## Notes:

- In accordance with a request from Dakota Exploration, PLS Group LLC has determined the location of the Smock 1-2-11-59H well site to be SHL: 625' FWL and 350' FSL; BHL: 625' FWL and 600' FNL as measured perpendicular to the section lines.
- Survey elevations based on NAVD 88 Datum using GPS observed heights and Geoid 2009 corrections.
- Distances shown are in SPC grid feet. Grid to Ground scale factor= 1.000231459810.
- This is not a Land Boundary Survey.
- Apparent Land Use is agricultural.
- Vegetation is pasture grass.
- Topographic map contours and spot elevation based on NGVD 1929.
- Topographic map dated 1977.

## Measurements:

- Distance to nearest building= 4985'
- Distance to nearest public road= 4620'
- Distance to nearest above-ground utility= 4605'
- Distance to nearest property line= 625'
- Distance to nearest railroad= 17 miles
- Distance to nearest well permitted/completed in the same formation= 700' ( Denny 1-11-11-59H )

\\vmware-host\Shared Folders\Documents\PLS Group\Project\2013\13070\dwg\13070d003 Smock.dwg June 02, 2013 - 12:19pm

Well Name: <b>Smock 1-2-11-59H</b>	Field Date 5/29/2013	Prepared for: <b>Dakota Exploration</b>  PLS Group, LLC 6843 North Franklin Avenue Loveland, Colorado 80538 970.669.2100 office - 970.669.3652 fax
Section 2-T11N-R59W-6PM, SW-SW	Party Chief DCB	
Weld County, Colorado	Proj. Manager MBS	
	Drawing Date 5/30/2013	