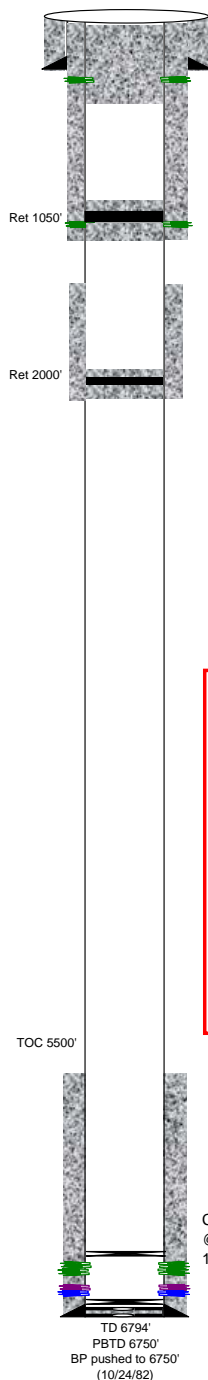




## Black Hills Plateau Production, LLC

A Black Hills Corporation Enterprise



General Well Info				3/13/2008
Well Name:	Winter Flats 1-12-100	Field:	Bronco Flats	
Srf Location:	SWNE 12 9S 100W 6PM	County:	Mesa	
Lease # <sub>(BLM)</sub> :	C-12657-A	State:	Colorado	
API #:	05-077-08513	Spud Date:	8/25/1982	
GL Elev:	6396'	TD Date:	9/5/1982	
KB Elev:	6410'	Compl Date:	10/26/1982	
Formation Tops				
Zone	Depth	Zone	Depth	
ROLLINS	1853'	DAKOTA SS	6522'	
COZZETTE	1950'	CEDAR MTN	6632'	
CORCORAN	2212'	MORRISON	6710'	
MANCOS	2456'			
DAKOTA SILT	6495'			

### Surface casing (8/26/82):

9 5/8" (9jts) 36# LT&C LS set @ 313' (13 3/4" hole)  
325sx Reg 2% CaCl w/ 1/4#/sk Flocele - good circ  
TOC @ srf

### Production casing (9/6/82):

4 1/2" (167jts) 10.5# J55 ST&C set @ 6794', FC @ 6754' (8 3/4" hole)  
100sx Lite & 240sx Reg 2% CaCl w/ 1/4#/sk Flocele - good circ  
TOC @ 5500' (per CBL 10/1/82)

### Production tubing (10/25/82):

214jts 2 3/8" SL tbg, SN & NC  
EOT @ 6625' (10/25/82)

Per SL - tbg s/b same as during workover in  
1999 - 206jts 2 3/8" (no EOT on report -6358')

10/25/99 Known csg leaks 2074-4767'

### ACTUAL P&A 10/20/10

- Pressure tested PBTD to 400 psi; held good for 20 mins.
- Perforated 4 circulating holes @ 1100' and 363'.
- Set 4 1/2" cement retainer at 2000'.
- Pumped 50sx class 15.8 G cement below retainer. Displaced 6 bbls. Stung out. Dumped 10 sx class G cmt on top of retainer.
- Set cement retainer @ 1050'.
- Stung in to retainer. Pumped 100sx G cement below retainer. Displaced 3 bbls. Stung out. Dumped 10sx cmt on top of retainer. SOH w/tbg.
- M&P 140 sx of 15.8 ppg G cement. Displaced 2 bbls w/ 5 bbls of 15.8 ppg cement down 4 1/2"
- Dig out and cut off 4' below ground level. Top fill 4 1/2" csg w/ 2 sx cement. 4 1/2" & 9 5/8" annulus full of cement at cut off. Install dry hole marker.
- Backfill, reclaim location and reseed.

DKTA (10/6/82) 6531-6544, 6560-6564, 6572-6588, 6593-6597, 6603-6606' (1spf, 45 holes)

♦ 10/7/82 Acid BD w/4000gal 7% Reg acid & 50bs, form brk @ 3800psi @ 5bpm  
MIR 6.5bpm, AIR 6.3bpm, MP 4200psi, AP 3900psi, good ball action  
ISIP 1100psi, 15min 800psi

CDMTN (10/1/82) 6638-6643, 6647-6655, 6667-6666, 6669-6680' (1spf, 26 holes)

MRSN (10/1/82) 6700-6705' (2spf, 10 holes) Best guess - reported 36holes total between CDMTN/MRSN

♦ 10/2/82 Acid BD w/4000gal 7% Reg acid & 45bs, form brk @ 3500psi @ 7bpm  
MIR 7.5bpm, AIR 7.5bpm, MP 3700psi, AP 3700psi, no ball action  
ISIP 1000psi, 15min 750psi

♦ 10/14/82 Frac CDMTN & DKTA w/137,000gal Versagel & 600scf CO2/ bbl, 200,000# 20/40m  
MIR 57bpm, AIR 55bpm, MP 4192psi, AP 3800psi  
ISIP 1480psi, 15min 1180psi