

# Schlumberger

**Company: Conoco Phillips Company**

**Well: Tebo 32-3H**

**Field: Wildcat**

**County: Arapahoe**

**State: Colorado**

**Platform Express  
Cement Volume**

County: Arapahoe  
 Field: Wildcat  
 Location: SESW Sec. 32, T4S, R64W  
 Well: Tebo 32-3H  
 Company: Conoco Phillips Company

<b>LOCATION</b>		SESW Sec. 32, T4S, R64W SHL: 350' FSL X 1980' FWL Lat/Long: 39.653322 N / 104.577111 W	Elev.: K.B. 5992.00 ft G.L. 5968.00 ft D.F. 5991.00 ft
Permanent Datum:	Ground Level	Elev.: 5968.00 ft	
Log Measured From:	Kelly Bushing	24.00 ft above Perm. Datum	
Drilling Measured From:	Kelly Bushing		
API Serial No. 05-005-07178-000C		Section 32	Township 4S Range 64W

Logging Date	7-Jun-2012		
Run Number	1		
Depth Driller	8300 ft		
Schlumberger Depth	8313 ft		
Bottom Log Interval	8305 ft		
Top Log Interval	2224 ft		
Casing Driller Size @ Depth	9.625 in @ 2214 ft		
Casing Schlumberger	2224 ft		
Bit Size	8.750 in		
Type Fluid In Hole	Oil Based Mud		
Density	9.1 lbm/gal	51 s	
Fluid Loss	PH		
Source Of Sample	Flowline		
RM @ Measured Temperature	41.050 ohm.m	@	120 degF
RMF @ Measured Temperature		@	
RMC @ Measured Temperature		@	
Source RMF	RMC	Calculated	Calculated
RM @ MRT	23.152 @ 218		@ 218
Maximum Recorded Temperatures	218 degF		
Circulation Stopped	6-Jun-2012	14:00	
Logger On Bottom	7-Jun-2012	12:00	
Unit Number	2135	Ft. Morgan, CO	
Recorded By	Tim Hoffman		
Witnessed By	Draw Friedrichs		

	Run 1	Run 2	Run 3
Logging Date			
Run Number			
Depth Driller			
Schlumberger Depth			
Bottom Log Interval			
Top Log Interval			
Casing Driller Size @ Depth			
Casing Schlumberger			
Bit Size			
Type Fluid In Hole			
Density			
Fluid Loss			
Source Of Sample			
RM @ Measured Temperature			
RMF @ Measured Temperature			
RMC @ Measured Temperature			
Source RMF			
RM @ MRT			
Maximum Recorded Temperatures			
Circulation Stopped			
Logger On Bottom			
Unit Number			
Recorded By			
Witnessed By			

## DEPTH SUMMARY LISTING

Date Created: 7-JUN-2012 11:51:06

### Depth System Equipment

Depth Measuring Device	Tension Device	Logging Cable
Type: IDW-B Serial Number: 4938 Calibration Date: 11-Apr-2012 Calibrator Serial Number: Calibration Cable Type: 7-46P-XS Wheel Correction 1: -6 Wheel Correction 2: -6	Type: CMTD-B/A Serial Number: 1919 Calibration Date: 11-May-2012 Calibrator Serial Number: 100513 Number of Calibration Points: 10 Calibration RMS: 11 Calibration Peak Error: 22	Type: 7-46P-XS Serial Number: Length: 24000 FT Conveyance Method: Wireline Rig Type: LAND

### Depth Control Parameters

Log Sequence: First Log In the Well
Rig Up Length At Surface: 0.00 FT
Rig Up Length At Bottom: 0.00 FT
Rig Up Length Correction: 0.00 FT
Stretch Correction: 6.00 FT
Tool Zero Check At Surface:

### Depth Control Remarks

<ol style="list-style-type: none"> <li>1. All Schlumberger depth policies followed</li> <li>2. IDW used as primary depth reference. Z-chart used as secondary</li> <li>3.</li> <li>4.</li> <li>5.</li> <li>6.</li> </ol>
--

#### DISCLAIMER

THE USE OF AND RELIANCE UPON THIS RECORDED-DATA BY THE HEREIN NAMED COMPANY (AND ANY OF ITS AFFILIATES, PARTNERS, REPRESENTATIVES, AGENTS, CONSULTANTS AND EMPLOYEES) IS SUBJECT TO THE TERMS AND CONDITIONS AGREED UPON BETWEEN SCHLUMBERGER AND THE COMPANY, INCLUDING: (a) RESTRICTIONS ON USE OF THE RECORDED-DATA; (b) DISCLAIMERS AND WAIVERS OF WARRANTIES AND REPRESENTATIONS REGARDING COMPANY'S USE OF AND RELIANCE UPON THE RECORDED-DATA; AND (c) CUSTOMER'S FULL AND SOLE RESPONSIBILITY FOR ANY INFERENCE DRAWN OR DECISION MADE IN CONNECTION WITH THE USE OF THIS RECORDED-DATA.

OTHER SERVICES1	OTHER SERVICES2
OS1: MSIP	OS1:
OS2: HNGS	OS2:
OS3: PPC	OS3:
OS4: RT Scanner	OS4:
OS5:	OS5:
REMARKS: RUN NUMBER 1	REMARKS: RUN NUMBER 2
This is the first run in hole	
Toolstring run as per tool sketch	
Matrix: Limestone (2.71 g/cc)	
Thermometer in head read 218 DegF at surface	

Rig: H&P 280

Crew: Josh Strand, Mark Hoffman

RUN 1		
SERVICE ORDER #:	BFN8-00178	
PROGRAM VERSION:	19C1-222	
FLUID LEVEL:	100 ft	
LOGGED INTERVAL	START	STOP

RUN 2		
SERVICE ORDER #:		
PROGRAM VERSION:		
FLUID LEVEL:		
LOGGED INTERVAL	START	STOP

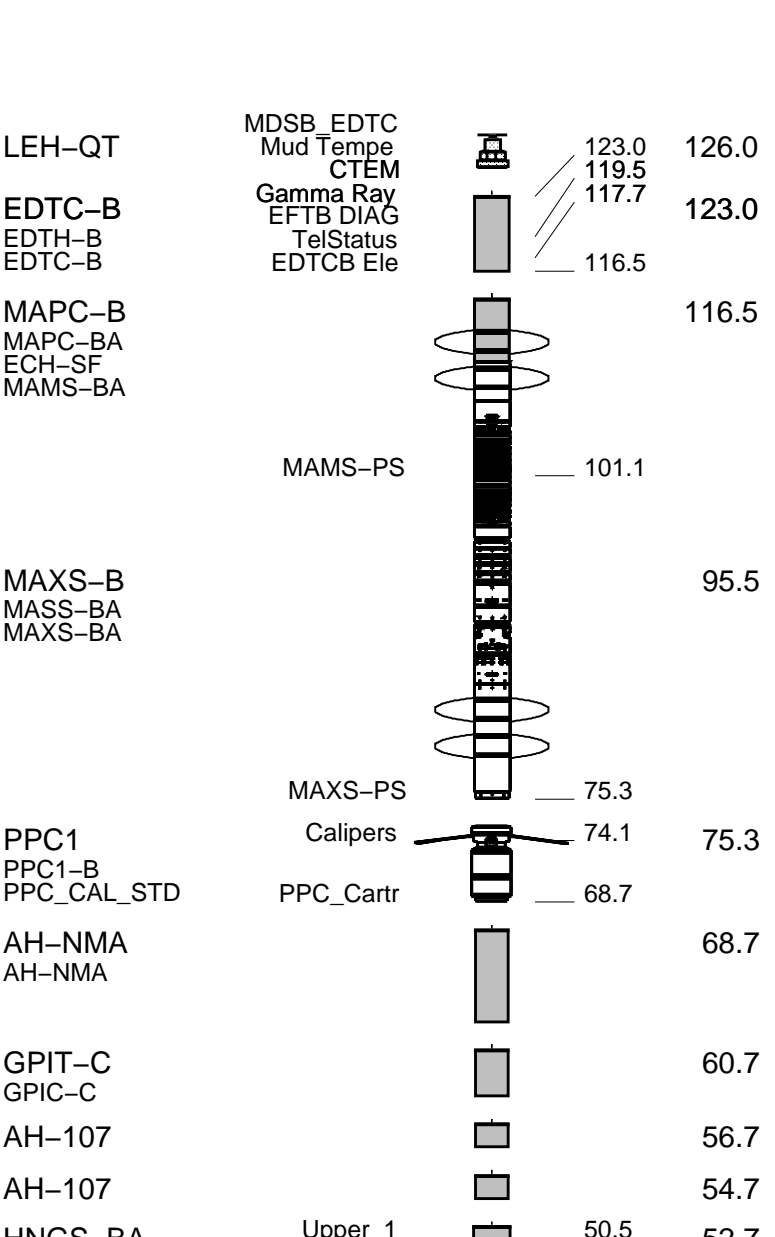
## EQUIPMENT DESCRIPTION

RUN 1

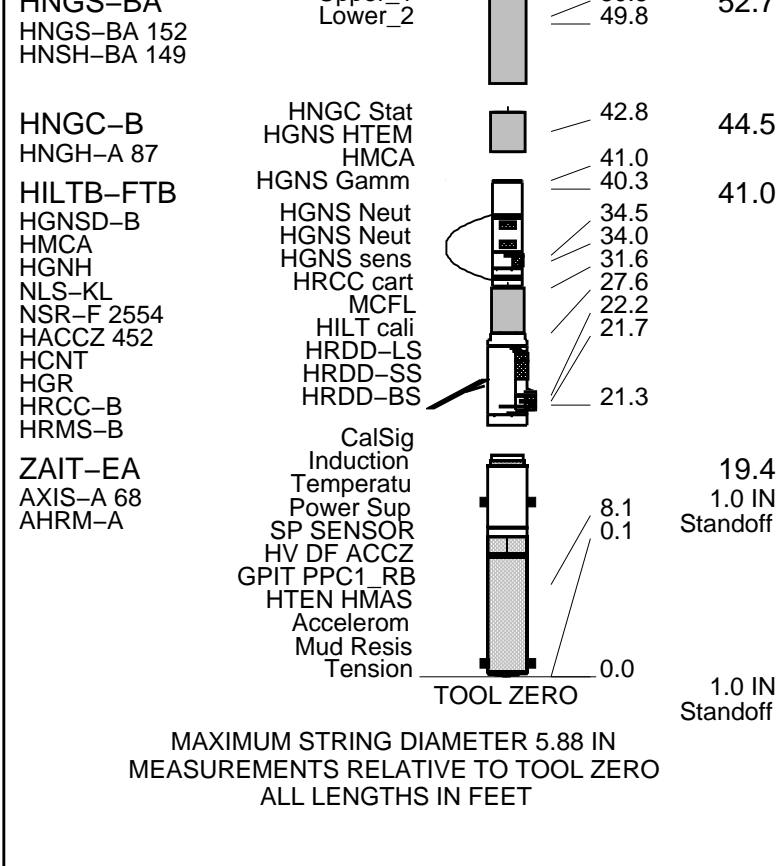
RUN 2

**SURFACE EQUIPMENT**  
 GSR-U/Y  
 NCT-B  
 CNB-AB  
 NCS-VB  
 GSR-U 120  
 WITM (EDTS)-A

**DOWNHOLE EQUIPMENT**



LEH-QT	126.0
EDTC-B	123.0
MAPC-B	116.5
MAMS-PS	101.1
MAXS-B	95.5
PPC1	75.3
AH-NMA	68.7
GPIT-C	60.7
AH-107	56.7
AH-107	54.7
Upper 1	50.5



### Output DLIS Files

DEFAULT      AIT\_TLD\_MCFL\_CNL\_029LUP      FN:28      PRODUCER      07-Jun-2012 11:58

### OP System Version: 19C1-222

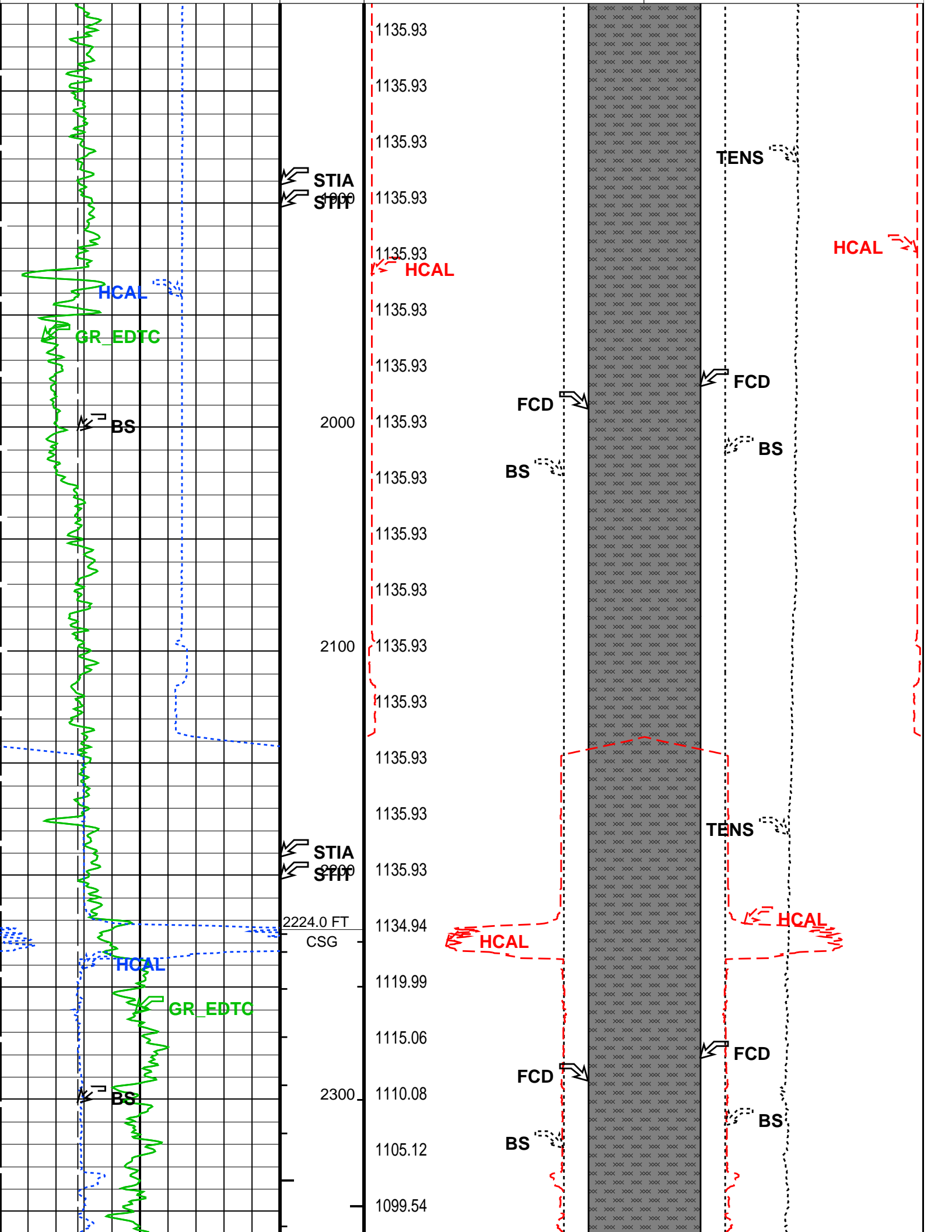
ZAIT-EA	HFE-5140-OP19.1-AIT-ZAI	HILTB-FTB	19C1-222
HNGC-B	HFE-5203-OP19.1-NUCL	HNGS-BA	HFE-5203-OP19.1-NUCL
GPIT-C	19C1-222	PPC1	19C1-222
MAXS-B	19C1-222	MAPC-B	19C1-222
EDTC-B	19C1-222		

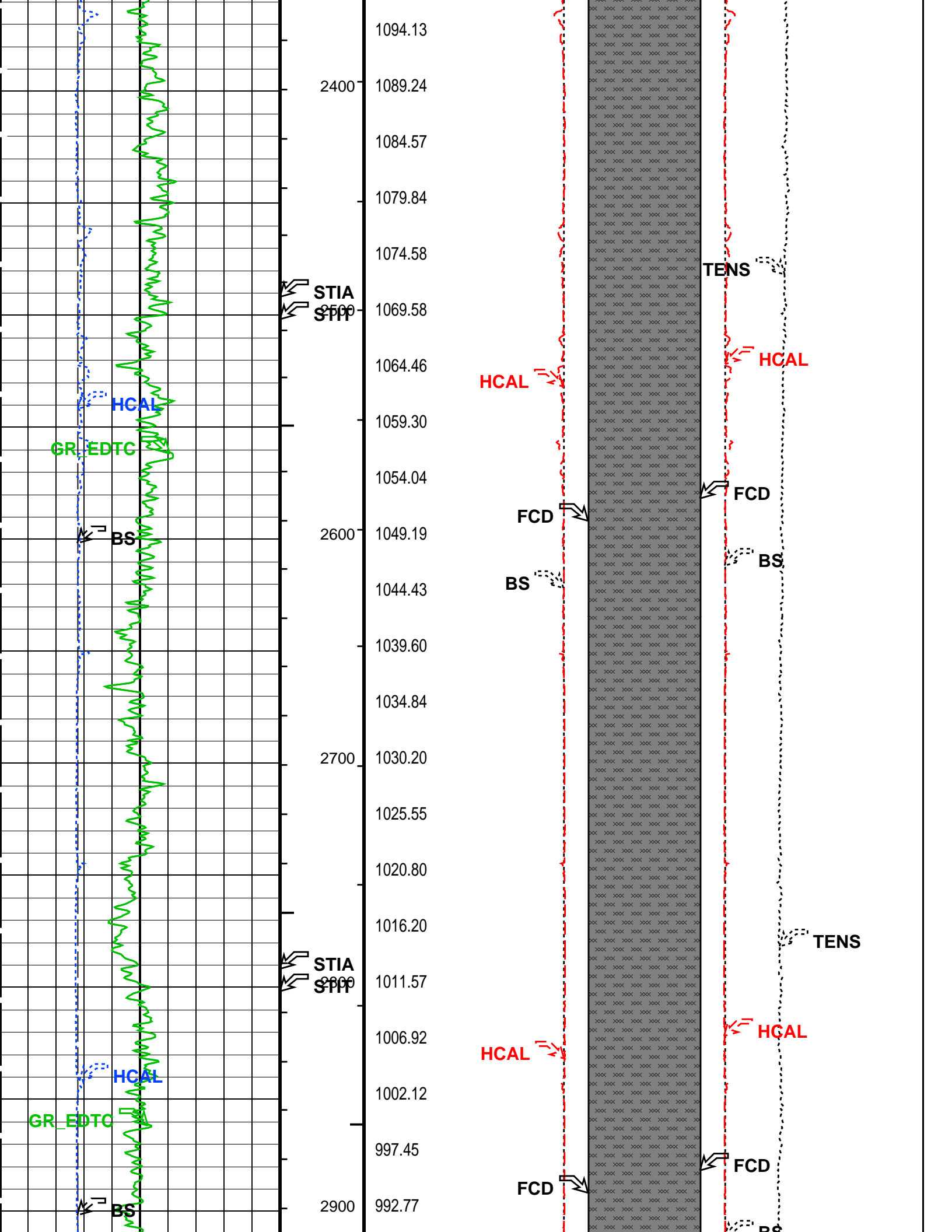
#### PIP SUMMARY

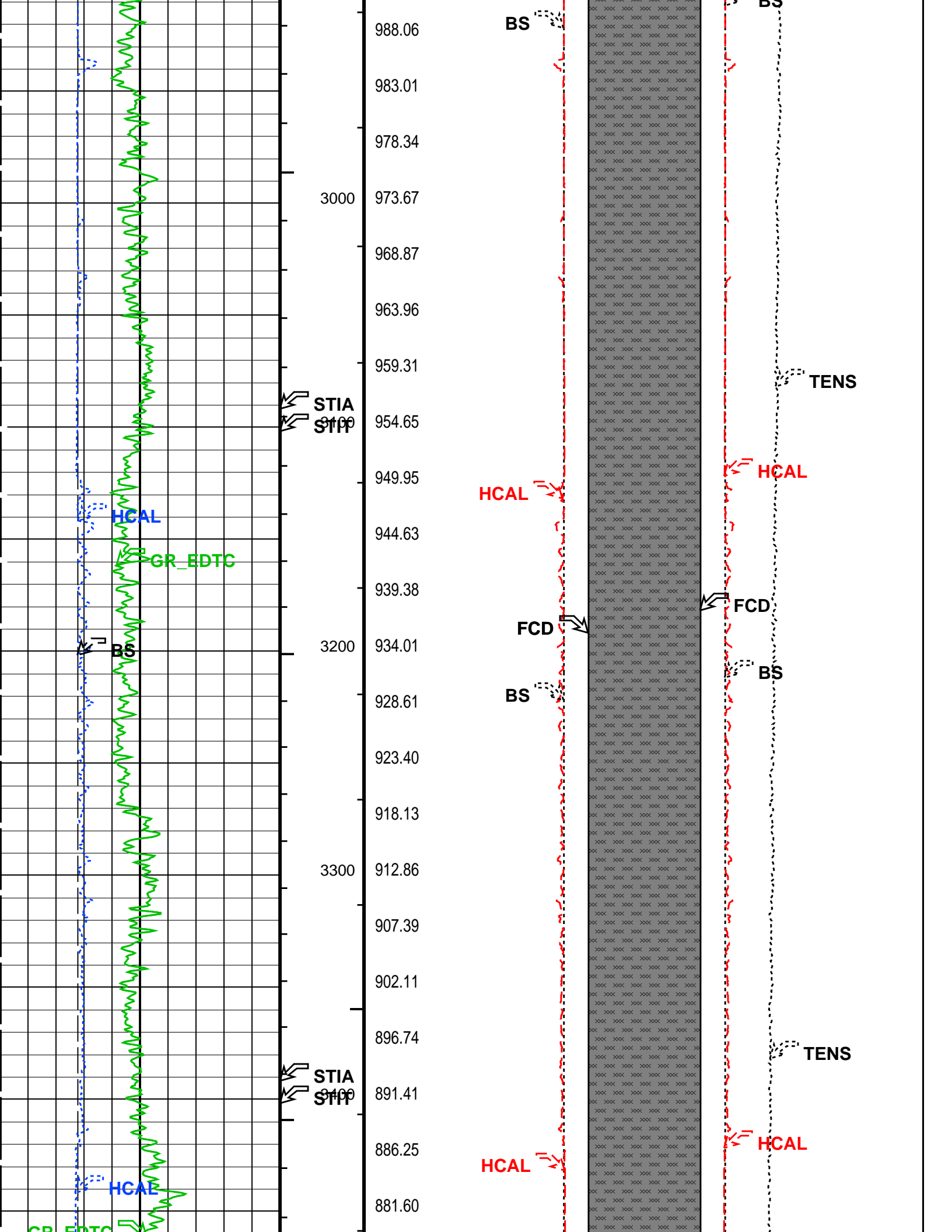
- ┌ Integrated Hole Volume Minor Pip Every 10 F3
- ┌ Integrated Hole Volume Major Pip Every 100 F3
  - └ Integrated Cement Volume Minor Pip Every 10 F3
  - └ Integrated Cement Volume Major Pip Every 100 F3

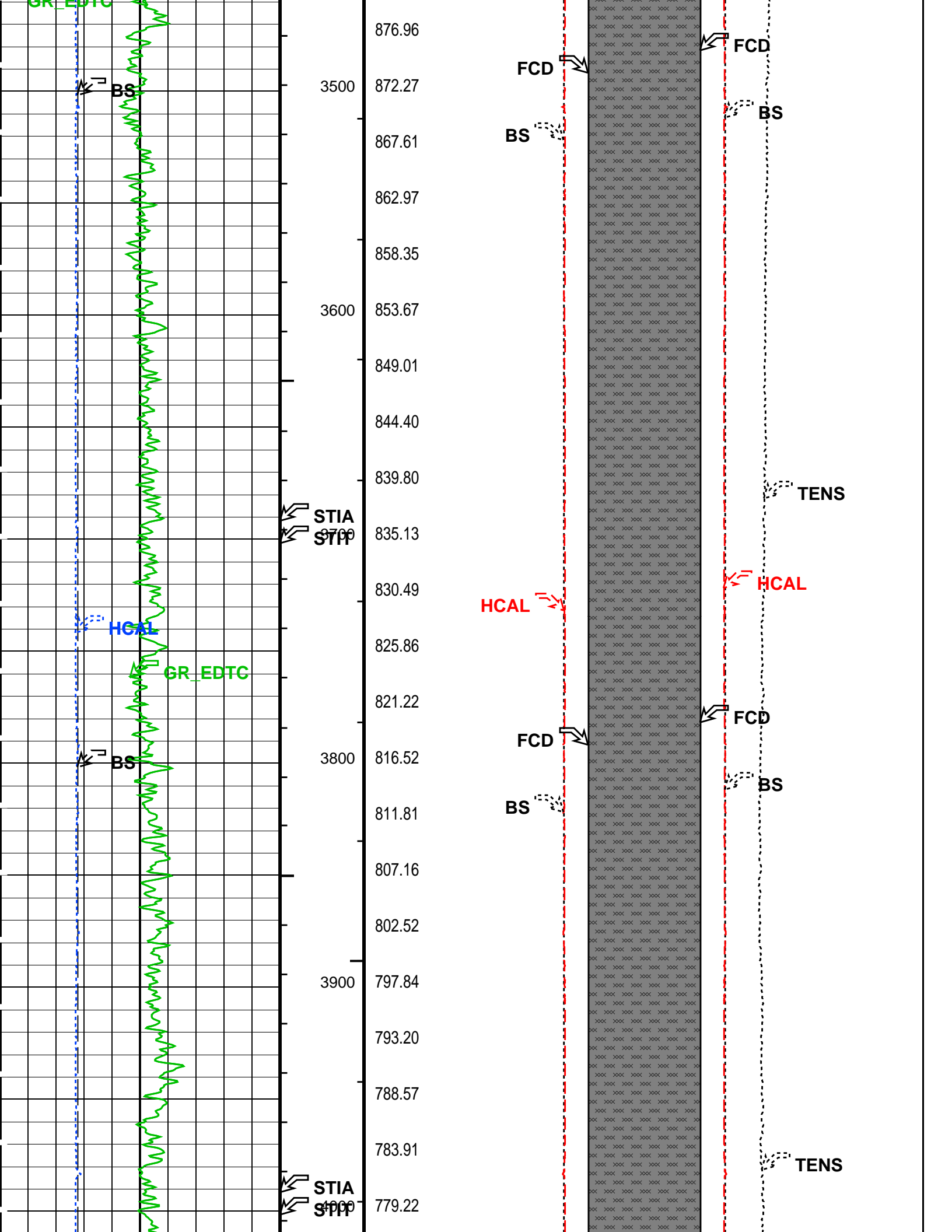
Time Mark Every 60 S

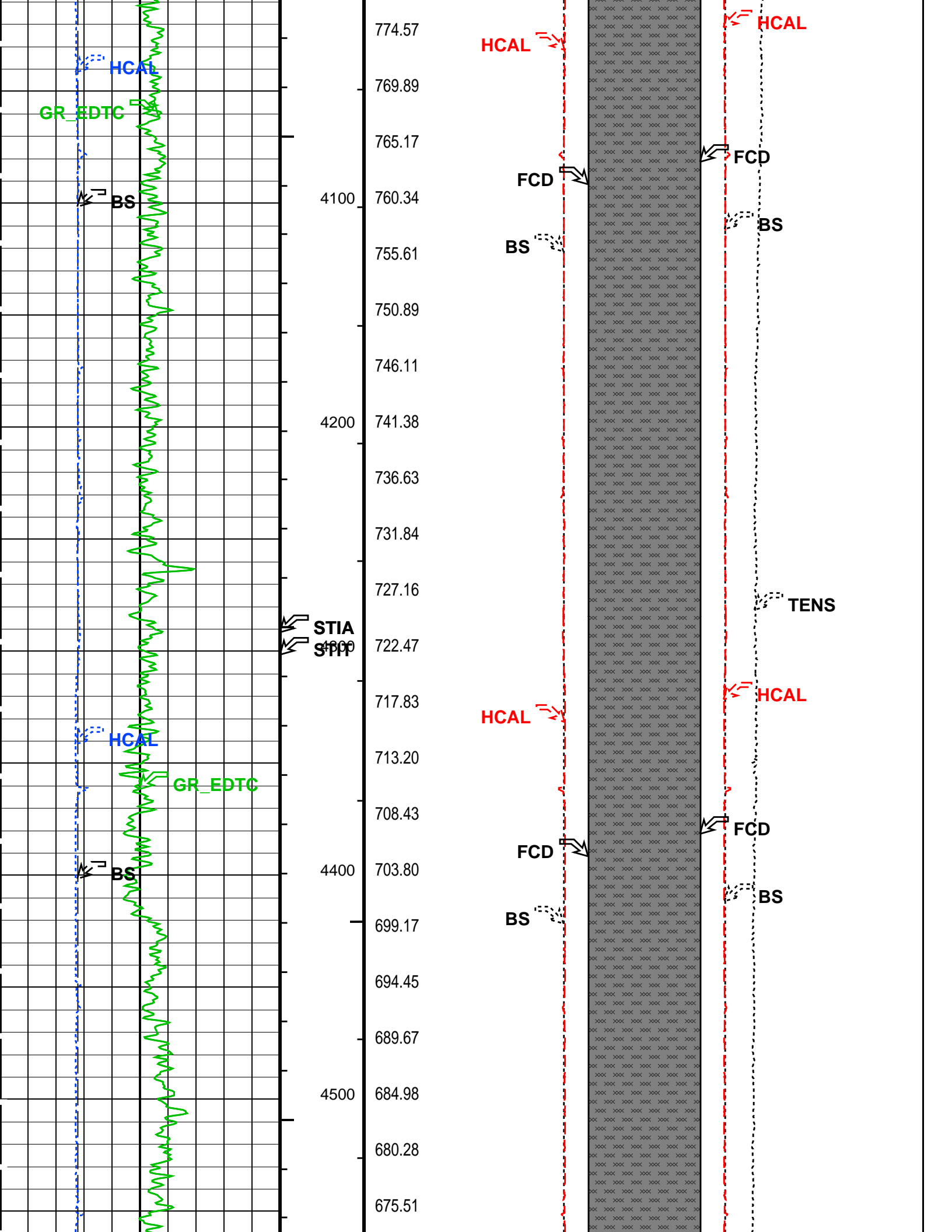
		FCD2 - FCD3 From FCD2 to FCD3			
		Cement Volume (ICV) (F3)	Tension (TENS) (LBF)		
			6000	0	
HILT Caliper (HCAL) (IN)	6	23	3	3	23
Gamma Ray (GR_EDTC) (GAPI)	0	23	3	3	23
Bit Size (BS) (IN)	6	23	3	3	23

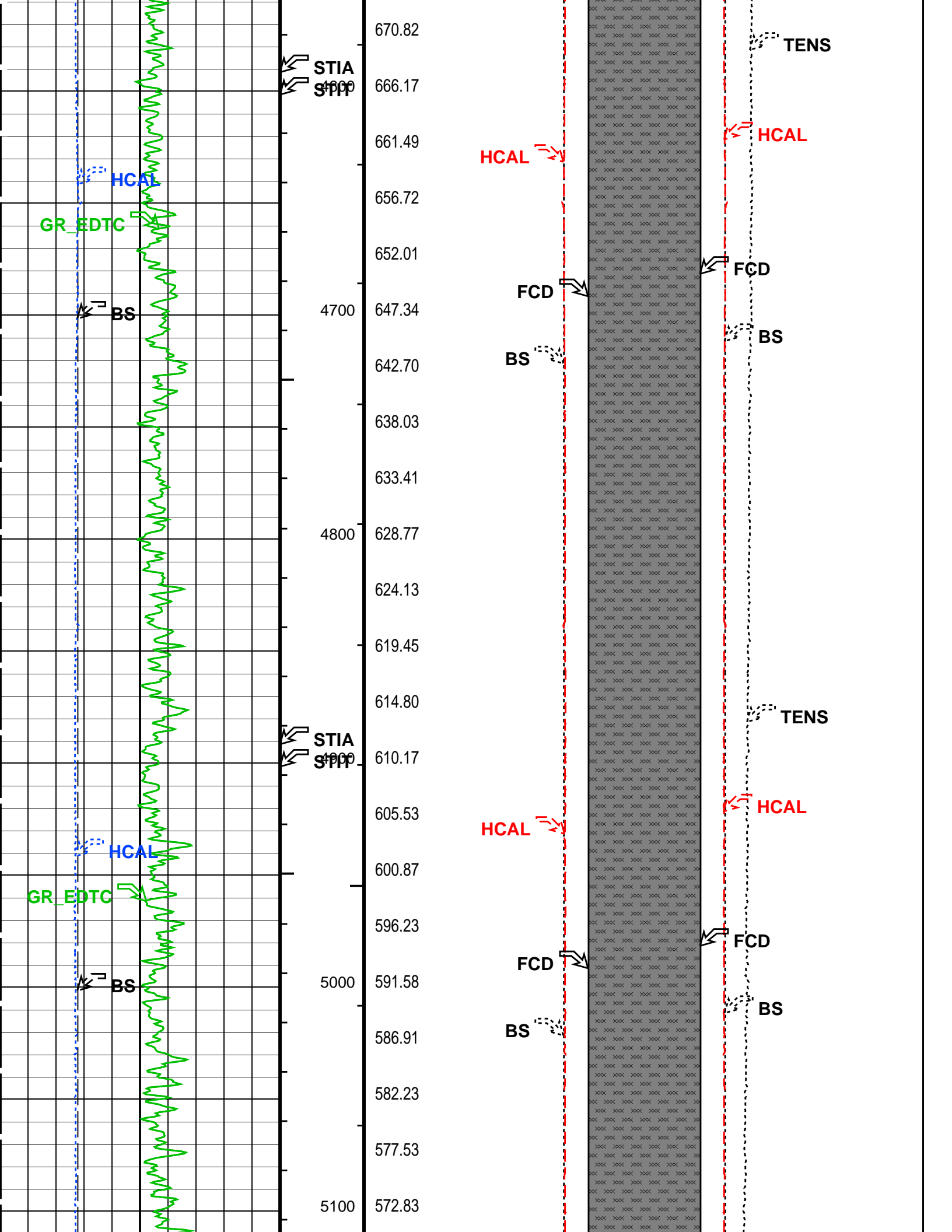


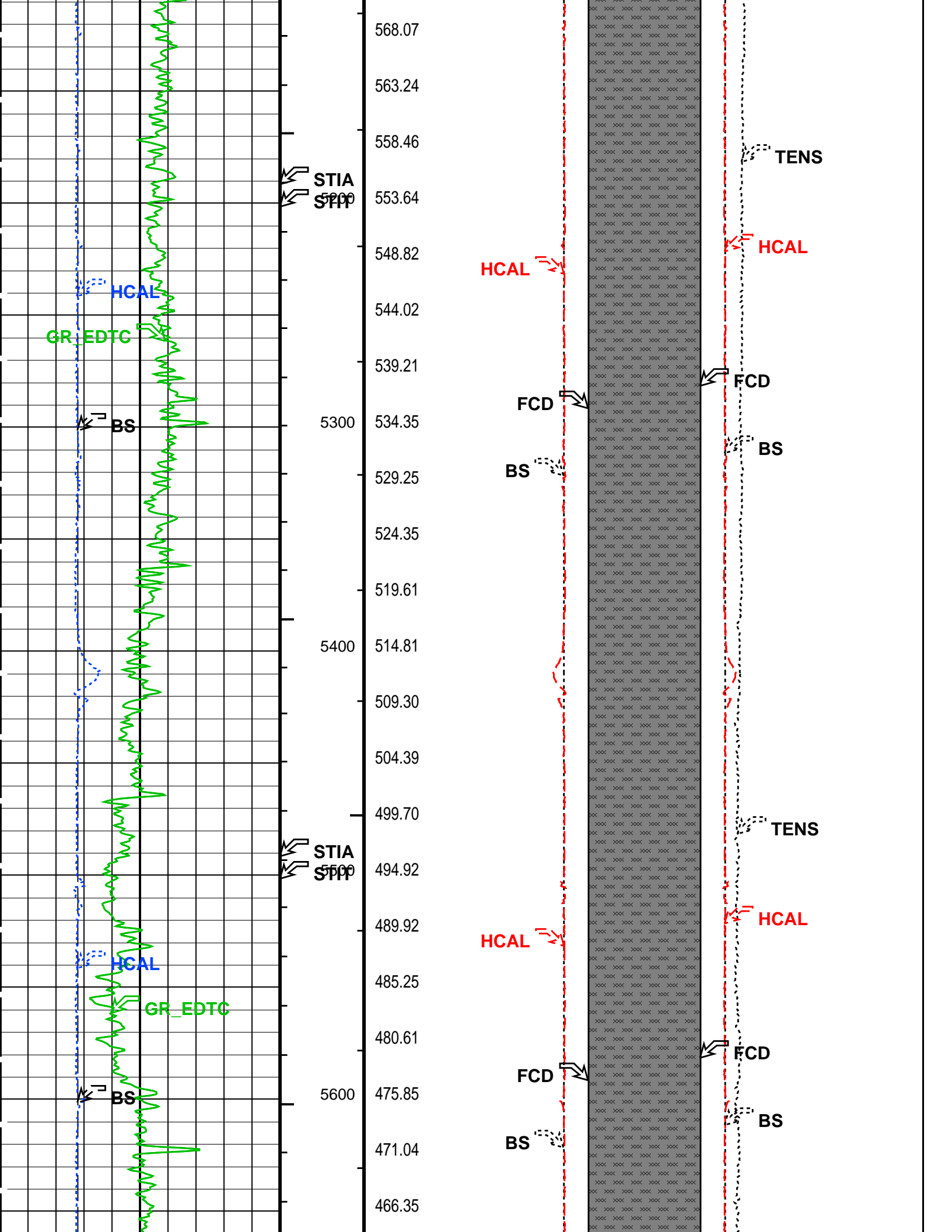


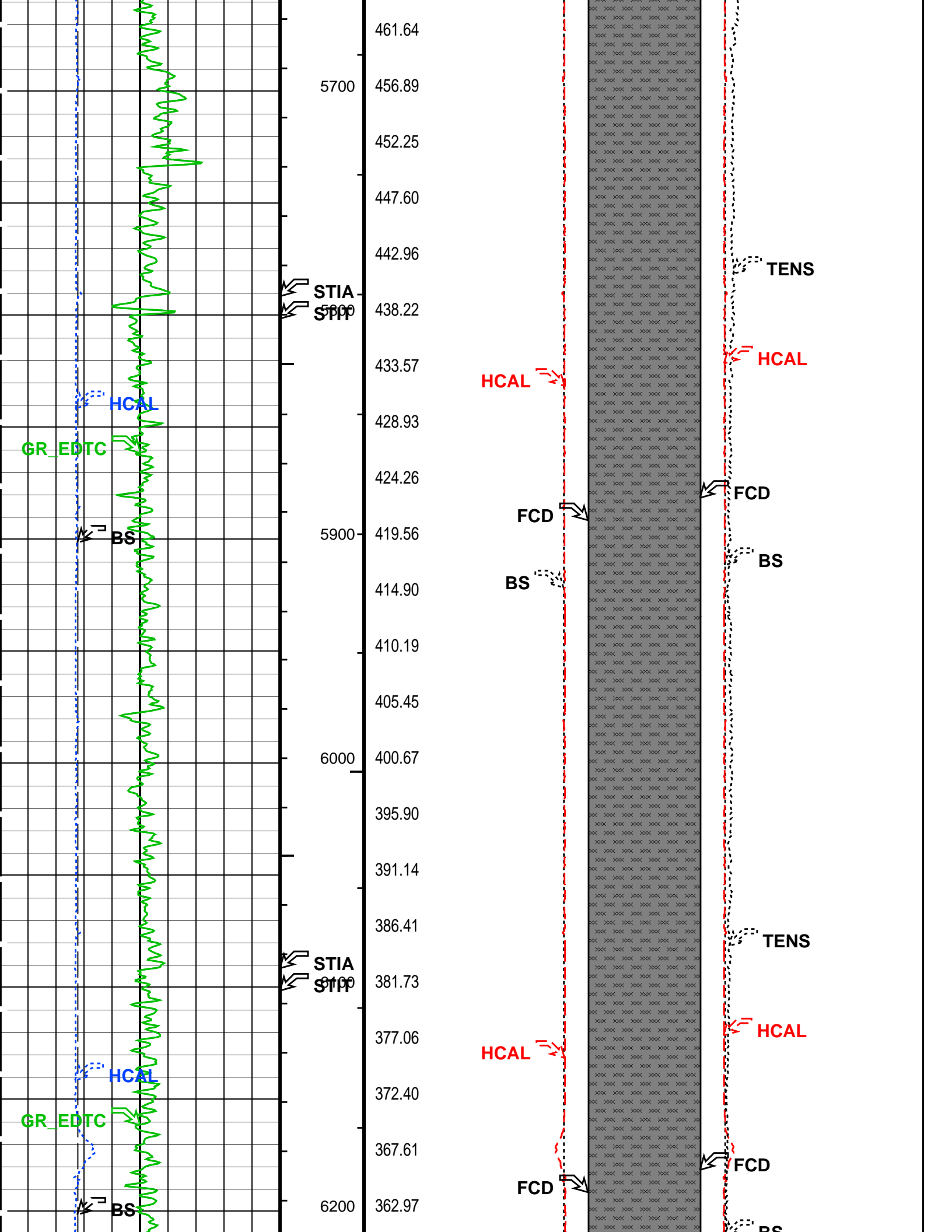


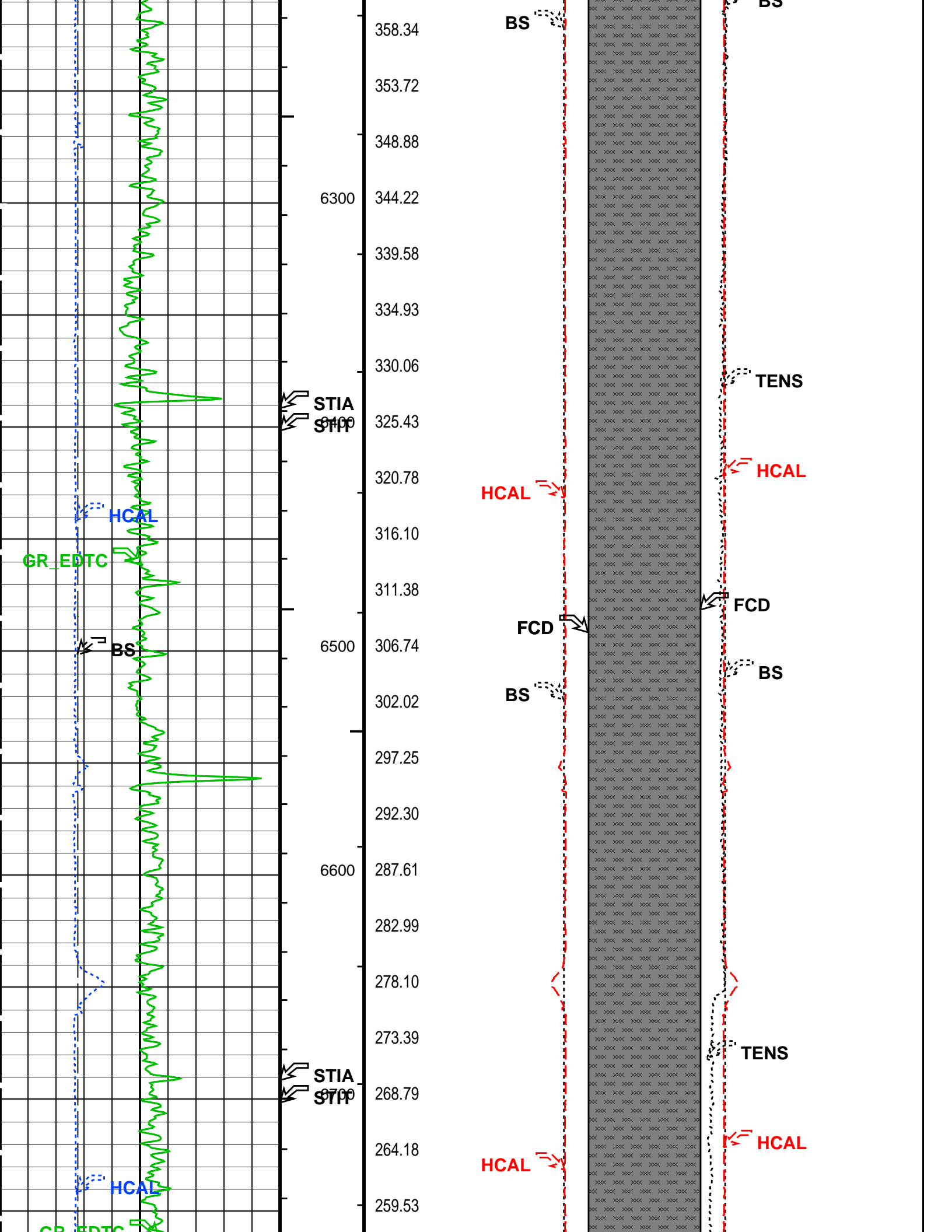


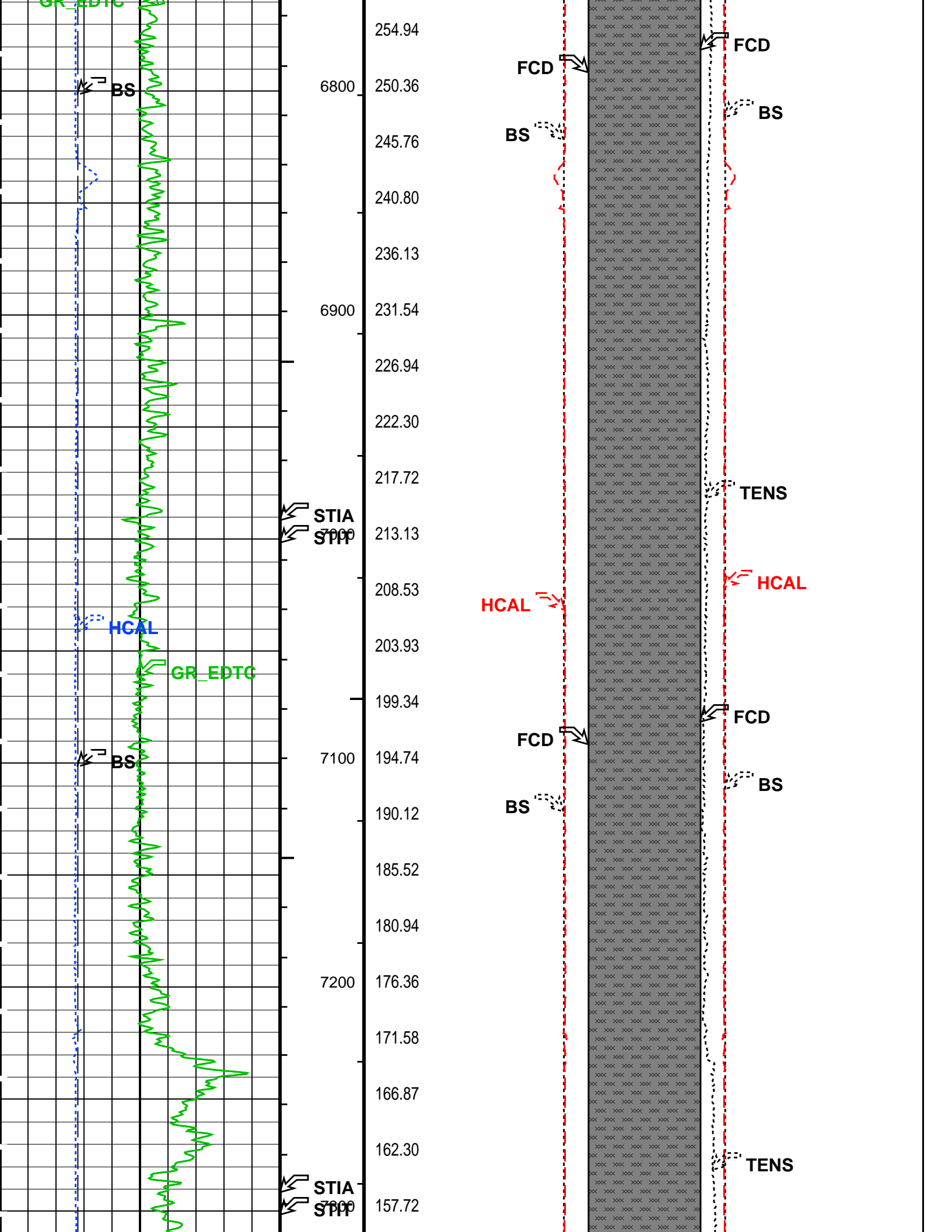


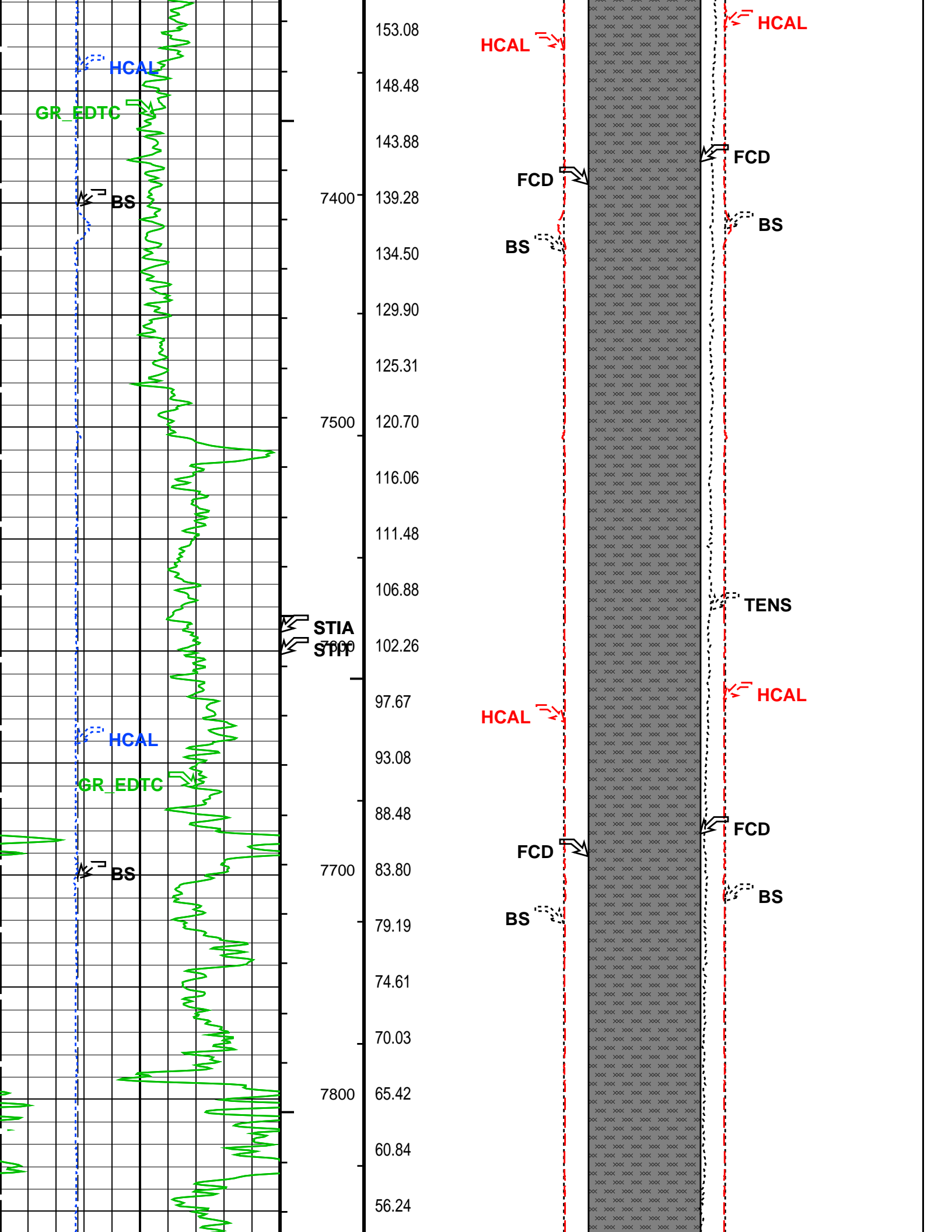


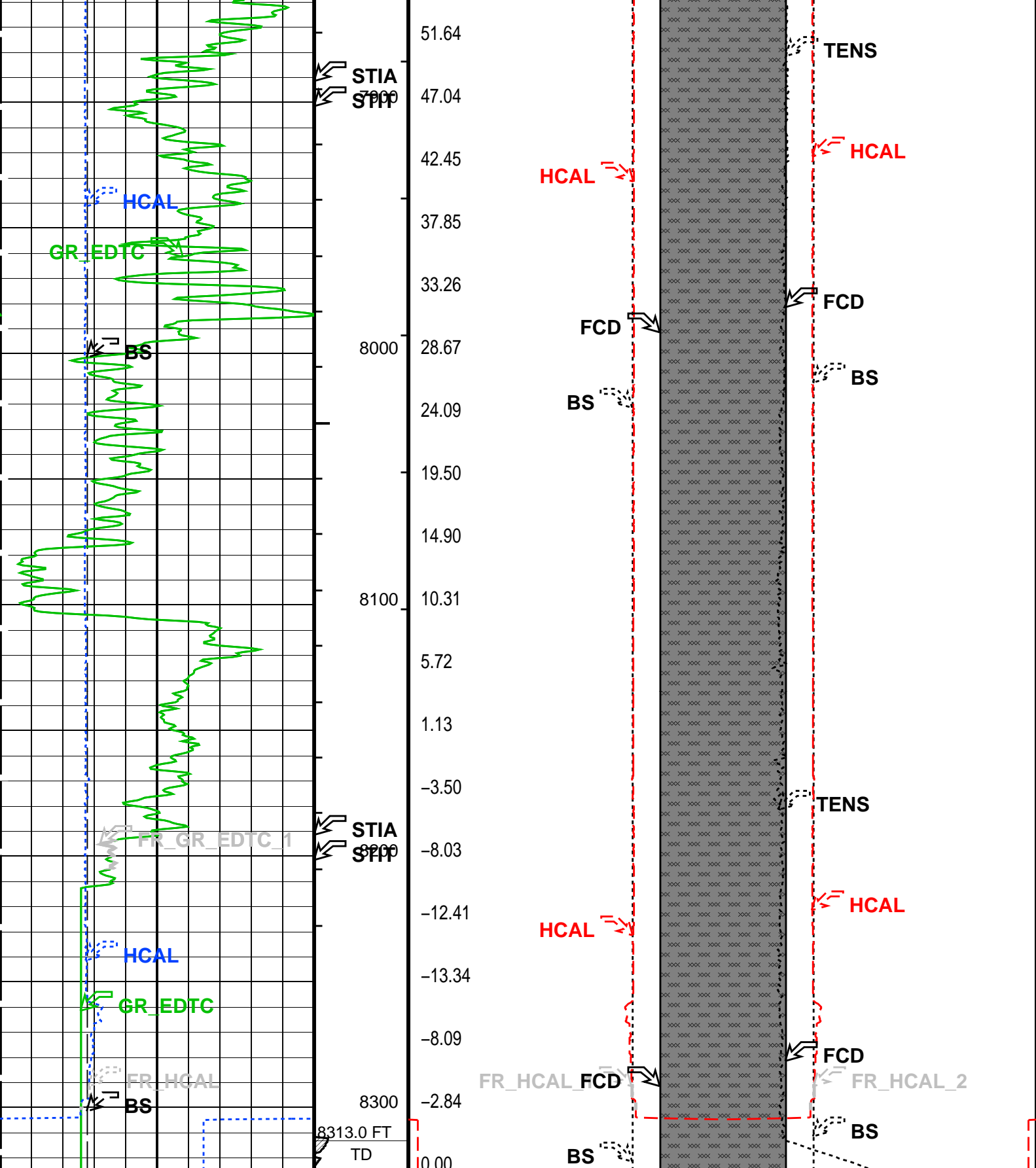












Bit Size (BS) (IN)		Stuck Stretch (STIT) (F)	Bit Size (BS) (IN)		Bit Size (BS) (IN)	
6	16	0 50	23	3	3	23
Gamma Ray (GR_EDTC) (GAPI)		Cable Drag From STIA to STIT	FCD2 (FCD) (IN)		FCD3 (FCD) (IN)	
0	200		23	3	3	23

HILT Caliper (HCAL) (IN)		6	16	23	HILT Caliper (HCAL) (IN)	3	3	HILT Caliper (HCAL) (IN)	23
Tool/Tot. Drag From D3T to STIA				Cement Volume (ICV) (F3)		Tension (TENS) (LBF)		6000	
FCD2 - FCD3 From FCD2 to FCD3									

**PIP SUMMARY**

- ┌ Integrated Hole Volume Minor Pip Every 10 F3
- ┌ Integrated Hole Volume Major Pip Every 100 F3
  - └ Integrated Cement Volume Minor Pip Every 10 F3
  - └ Integrated Cement Volume Major Pip Every 100 F3

Time Mark Every 60 S

**Parameters**

DLIS Name	Description	Value
TR1DV	ZAIT-EA: 3-D Array Induction Tool - ZAIT-E 3D 1D Code Version Number	0
TRIBHV	Array Induction Borehole Correction Code Version Number	20110
TRIRT	3D Rotation Selector	North
BS	MAPC-B: Multimode Array Sonic Power Cartridge Bit Size	8.750 IN
FCD	HOLEV: Integrated Hole/Cement Volume Future Casing (Outer) Diameter	7 IN
HVCS	Integrated Hole Volume Caliper Selection	AUTOMATIC
LBFR	STI: Stuck Tool Indicator Trigger for MAXIS First Reading Label	TDL
STKT	STI Stuck Threshold	2.5 FT
TDD	Total Depth - Driller	8300.00 FT
TDL	Total Depth - Logger	8313.00 FT
System and Miscellaneous		
DORL	Depth Offset for Repeat Analysis	0.0 FT
TD	Total Depth	8313 FT

Format: G\_DCAL\_FORMAT Vertical Scale: 2" per 100' Graphics File Created: 07-Jun-2012 11:58

**OP System Version: 19C1-222**

ZAIT-EA	HFE-5140-OP19.1-AIT-ZAI'	HILTB-FTB	19C1-222
HNGC-B	HFE-5203-OP19.1-NUCL	HNGS-BA	HFE-5203-OP19.1-NUCL
GPIT-C	19C1-222	PPC1	19C1-222
MAXS-B	19C1-222	MAPC-B	19C1-222
EDTC-B	19C1-222		

**Output DLIS Files**

DEFAULT AIT\_TLD\_MCFL\_CNL\_029LUP FN:28 PRODUCER 07-Jun-2012 11:58

Company: **Conoco Phillips Company**

**Schlumberger**

Well: **Tebo 32-3H**

Field: **Wildcat**

County: **Arapahoe**

State: **Colorado**

Platform Express  
Cement Volume