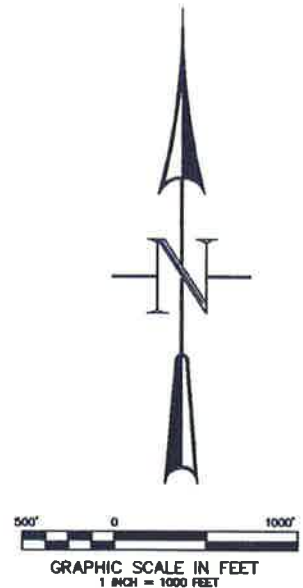
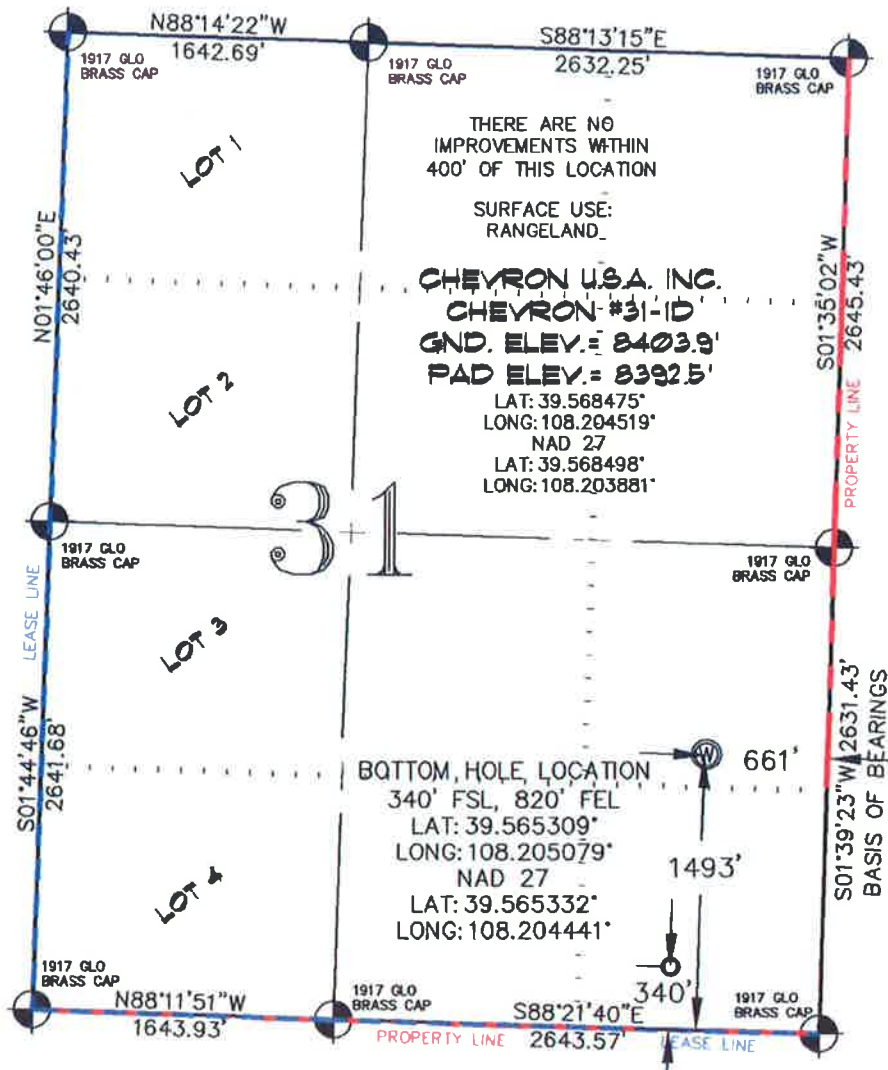


SEC. 31, T. 5 S., R. 96 W. OF THE 6TH P.M. Chevron 131-596
Pad Location



-LEGEND-

- SECTION CORNER LOCATION
BASED ON GLO RECORD
INFORMATION
- FIELD SURVEYED SECTION
CORNER LOCATIONS
- ⊙ FIELD SURVEYED PAD
LOCATION
- CALCULATED BOTTOM
HOLE LOCATION

THIS WELL LOCATION PLAT WAS PREPARED FOR BERRY PETROLEUM COMPANY, TO LOCATE THE CHEVRON #31-1D WELL, 1493 FEET FROM THE SOUTH LINE AND 661 FEET FROM THE EAST LINE IN THE NE 1/4 SE 1/4 OF SECTION 31, T. 5 S., R. 96 W. OF THE 6TH P.M. GARFIELD COUNTY, COLORADO.

REFERENCE NOTES

- 1) T. 5 S., R. 96 W., 6TH P.M. GLO PLAT.
- 2) U.S.G.S. QUAD: CIRLCE DOT GULCH, CO
- 3) ELEVATIONS BASED ON N.A.V.D. 1988
- 4) LATITUDES AND LONGITUDES ARE BASED ON NAD 83, COLORADO CENTRAL ZONE.
- 5) GPS OPERATOR ROBERT WOOD, OBSERVED A PDOP OF 2.5.
- 6) ALL GPS OBSERVATIONS ARE IN COMPLIANCE WITH COGCC RULE NO. 215.
- 7) SURFACE AND BOTTOM HOLE LOCATIONS ARE MEASURED 90° FROM SECTION LINES.

SURVEYOR'S CERTIFICATE

I, George R. Bauer: a Professional Land Surveyor in the State of Colorado do hereby certify that this Survey was made under my direct supervision, and that this Plat represents said Survey.

[Signature]
27925
4/4/10
COLORADO P.L.S. 27925



CONSTRUCTION SURVEYS, INC.
0012 SUNRISE BLVD.
SILT, CO 81652
(970)876-5753

VIEW: 1D

SURVEYED: 09/24/07	SCALE: 1" = 1000'
DRAFTED: 05/03/10	DWG: BERRY/CHEVRON 131-596
CHECKED: 05/04/10	SHEET: 1 of 11