

**T5N, R91W, 6th P.M.**  
 S89°03'W - 5163.84' (G.L.O.)

**SWEPI LP**

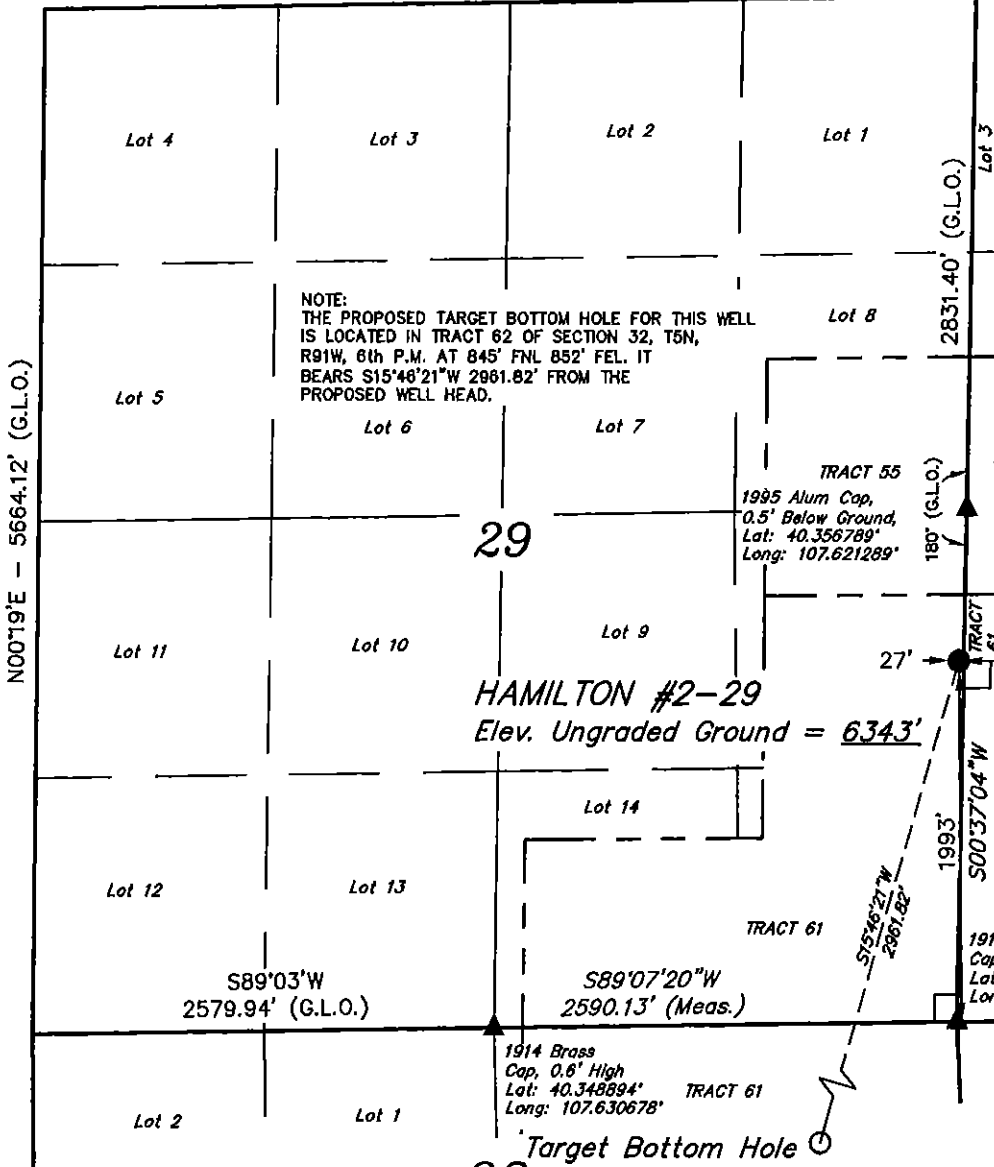
Well location, HAMILTON #2-29, (SURFACE LOCATION) located as shown in TRACT 61 of Section 29, T5N, R91W, 6th P.M., Moffat County, Colorado.

**BASIS OF ELEVATION**

SPOT ELEVATION AT THE NORTHEAST CORNER OF SECTION 31, T5N, R90W, 6th P.M. TAKEN FROM THE HAMILTON QUADRANGLE, COLORADO, MOFFAT COUNTY, 7.5 MINUTE QUAD (TOPOGRAPHIC MAP) PUBLISHED BY THE UNITED STATES DEPARTMENT OF THE INTERIOR, GEOLOGICAL SURVEY. SAID ELEVATION IS MARKED AS BEING 6664 FEET.

**BASIS OF BEARINGS**

BASIS OF BEARINGS IS A G.P.S. OBSERVATION.



NOTE: SEE ADDENDUM TO LEGAL PLAT FOR EXISTING IMPROVEMENTS WITHIN 400' OF THE PROPOSED DISTURBANCE.



SCALE

CERTIFICATE

THIS IS TO CERTIFY THAT THE ABOVE PLAT WAS PREPARED FROM FIELD NOTES OF ACTUAL SURVEYS MADE BY ME OR UNDER MY SUPERVISION AND THAT THE SAME ARE TRUE AND CORRECT TO THE BEST OF MY KNOWLEDGE AND BELIEF.

*Robert H. Han*  
 REGISTERED LAND SURVEYOR  
 REGISTRATION NO. 17492  
 STATE OF COLORADO

REVISED: 01-22-13  
 REVISED: 06-26-12

01-23-13

**UINTAH ENGINEERING & LAND SURVEYING**  
 85 SOUTH 200 EAST - VERNAL, UTAH 84078  
 (435) 789-1017

**LEGEND:**

- └─┘ = 90° SYMBOL
- = PROPOSED WELL HEAD.
- ▲ = SECTION CORNERS LOCATED.

PDOP = 1.3

<b>NAD 83 (SURFACE LOCATION)</b>
LATITUDE = 40°21'16.13" (40.354481)
LONGITUDE = 107°37'17.09" (107.621414)
<b>NAD 27 (SURFACE LOCATION)</b>
LATITUDE = 40°21'16.22" (40.354506)
LONGITUDE = 107°37'14.86" (107.620794)

SCALE 1" = 1000'	DATE SURVEYED: 06-01-12	DATE DRAWN: 06-07-12
PARTY G.M. M.M. J.M.H.	REFERENCES G.L.O. PLAT	
WEATHER WARM	FILE SWEPI LP	